

Tredit Tire Warranty

Eligibility

This Limited Warranty applies only to the original retail purchaser of Tredit Tire radial tires. The type of tire you purchased can be determined by reference to the name and serial number located on the sidewall of your tire

What this Warranty Covers

Subject to the terms and conditions stated in this Limited Warranty, Tredit will replace or provide an appropriate allowance for, any Tredit brand radial tire sold and used in the United States and/or Canada, that fails due to a defect in material and/or workmanship for a period of six (6) years from date of retail purchase (weather checking, 2 years). The date of purchase shall be determined by referencing your trailer or tire invoice. If you cannot provide your trailer or tire invoice, your coverage will be determined with reference to the date of tire manufacture, determined by the Department of Transportation (DOT) prescribed tire identification numbers, located on the sidewall of the tire.

What Tredit Will Do

Determination of whether a defect in material and/or workmanship exists will be made by Tredit, in its sole discretion, after examination of the tire. If Tredit determines that a defect in material and/or workmanship exists in your tire, the following shall apply:

- 1.If the tire failed during the first 2/32 inch (1.6 mm) of original usable tread depth, Tredit will replace the tire free of charge with a comparable new tire from Tredit's then-current inventory. A "comparable" new tire may be either the same line of tire or if the same tire is unavailable, a tire of the same basic or equal construction and quality with different sidewall or treadwear configuration.
- 2.If the tire failed beyond the first 2/32 inch (1.6 mm) of original usable tread depth, Tredit will provide you with a reasonable allowance towards the purchase of the same or a comparable new tire from Tredit's then-current inventory, at the retail selling price prevailing at the time of the replacement. The allowance will be based upon a pro-rata charge determined by the used tread depth. For example, if 60% of the original tread depth remains on the failed tire, you will be entitled to a 60% discount off of the retail price of a new same or comparable tire.
- 3.If the failed tire has less than 2/32 inch (1.6 mm) of tread depth, is worn down to tread wear indicators, or fails after 60 months from the date of purchase, the tire is deemed to have served its full useful life and Tredit will provide no replacement allowance.

What You Must Do

In order to make a claim under this Limited Warranty, you must present the failed tire to a Tredit Tire distributor or participating dealer in the USA or Canada, along with proof of your purchase date, such as an original trailer dealer or tire retailer invoice or contact Tredit at (866) 443-9907. Tires accepted for claim under this Limited Warranty become the property of Tredit. You must make your claim within 30 days of your discovery of the alleged defect. You must pay the adjusted price of the new tire (current retail price less applicable allowance).

This Limited Warranty does not apply to:

- 1.Damage, failure, or irregular or premature tread wear, caused by, resulting from, or arising out of fire; accident, chemical corrosion, malicious mischief, vandalism, or road hazards. Examples of

road hazards include, without limitation: nails; glass; rocks; curbs; other foreign objects; and natural and manmade obstructions or obstacles, such as excavations, construction, potholes, and chuckholes. Damage caused by road hazards can include, without limitation: cuts, snags, carcass bruises,

2. Damage, failure, or irregular or premature tread wear, caused by, resulting from, or arising out of improper operation or maintenance such as, without limitation: misapplication; neglect; misuse; running flat; overloading; under-or-over inflation; excessive speed; improper wheel alignment; improper installation; improper mounting or dismounting; use of puncture sealants, tire plugs, or fillers; noncompliance with safety, usage, or maintenance instructions or parameters; or any alteration to the tire such as, without limitation, grooving, bead or sidewall decorative material, or the addition of a white inlay (whitewall) to any tire.

3. Out of round tires returned after the first 10% of treadwear.

Limitations and Exclusions This Limited Warranty is the only applicable warranty, and ALL IMPLIED WARRANTIES, INCLUDING ANY IMPLIED WARRANTY OF MERCHANTABILITY AND/OR FITNESS FOR A PARTICULAR PURPOSE, ARE EXPRESSLY LIMITED TO THE DURATION OF THIS EXPRESS LIMITED WARRANTY. Some states do not allow limitations on how long an implied warranty lasts, so the above limitation may not apply to you. To the extent permitted by law, TREDIT EXPRESSLY DISCLAIMS ANY AND ALL LIABILITY FOR ANY INCIDENTAL AND CONSEQUENTIAL DAMAGES, INCLUDING, WITHOUT LIMITATION, LOSS OF TIME, INCONVENIENCE, LOSS OF USE OF TRAILER, COSTS OF TOWING OR TRANSPORTATION, AND VEHICLE/TRAILER DAMAGE. Some states do not allow the exclusion or limitation of incidental or consequential damages, so the above limitation or exclusion may not apply to you. Tredit makes no express claims of expected tire wear. Tire wear can be affected by many variables including, without limitation driving conditions, load, and tire inflation. Nothing in this warranty is intended to be a representation that tire failures cannot occur. No one, including Tredit employees, representatives, or dealers has the authority to make or imply any warranties, promises or agreements which in any way vary from the terms of this Limited Warranty.

Dispute Resolution Any controversy or claim arising out of or relating to this Limited Warranty, or the sale or use of any tire, or any breach thereof, shall be settled by arbitration administered by the American Arbitration Association in accordance with its Commercial Arbitration Rules, and judgment on the award rendered by the arbitrator may be entered in any court having jurisdiction thereof. The place of arbitration shall be Elkhart, Indiana. This agreement shall be governed by and interpreted in accordance with the laws of the State of Indiana. The parties acknowledge that this agreement evidences a transaction involving interstate commerce. The Federal Arbitration Act, 9 U.S.C. §2 et seq., also known as the United States Arbitration Act, shall govern the interpretation, enforcement, and proceedings pursuant to the arbitration clause in this agreement.



Tire Warranty Conditions



COVERED Warranty Conditions	NOT COVERED Warranty Conditions
<p>TREAD:</p> <ul style="list-style-type: none"> • Tread Separation <p>SIDEWALL:</p> <ul style="list-style-type: none"> • Shoulder Cracking • Sidewall Separation • Spread Ply <p>BEAD:</p> <ul style="list-style-type: none"> • Circumferential Bead Cracking • Migrating Bead Wire • Bead Area Separation <p>LINER:</p> <ul style="list-style-type: none"> • Trapped Air in Liner over 0.25 inch • Liner Crack • Thin Liner • Open Liner Splice <p>OTHER:</p> <ul style="list-style-type: none"> • Light/thin Rubber • Foreign Material • Vibration before the first 2/32nd of treadwear • Weather Checking (2 years from date of purchase) 	<p>ROAD HAZARDS:</p> <ul style="list-style-type: none"> • Sidewall Cut • Curbing (Sidewall or Shoulder) • Bubble in Sidewall • Puncture Beyond Repairable Limits • Impact Break in Liner • Impact Break Across Tread • Cut Tread • Ran Underinflated to Destruction <p>IRREGULAR WEAR:</p> <ul style="list-style-type: none"> • Heel and Toe Wear • Diagonal Wipe Wear • Depressed Rib Wear • Erosion Wear • Fast Centerline Wear • 360* One-Side Shoulder Wear • 360* Both Side Shoulder Wear • Hi-low Lug Wear <p>DAMAGE:</p> <ul style="list-style-type: none"> • Improper Repair • Sealants/Fillers/Balancing Materials • Modification of Tire (Grooving, Decorative Sidewall, etc) • Mounting Damage • Chemical Contamination • Fire Damage • Vandalism • Bead Break • Brake Skid • Ran-Flat • Fabric Fatigue/Zipper Break <p>OTHER:</p> <ul style="list-style-type: none"> • Vibration after the first 2/32nd of treadwear • Weather Checking after 2 years • Noise • Beyond Warranty Age Limit • Cannot Balance • Unit Damages (Fender, Structure, Cargo, etc.)

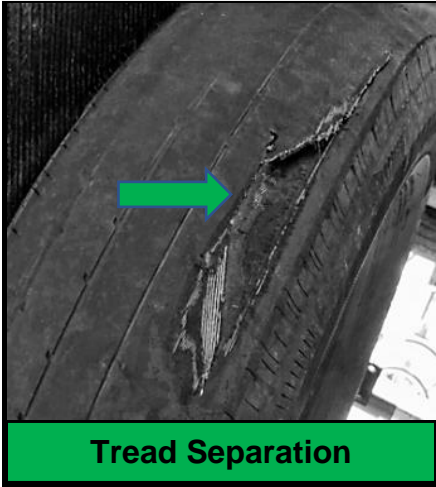
IMPORTANT: The adjustment process does not involve the kind of analysis necessary to determine the existence of a covered warranty condition. The conditions shown are for illustration only and should not be considered as proof of workmanship or material condition. A tire may be adjusted for a condition that may have resulted from one of many possible causes. Neither the presence of a condition nor the fact that a tire is adjusted for a condition establishes that a problem exists in the tire.



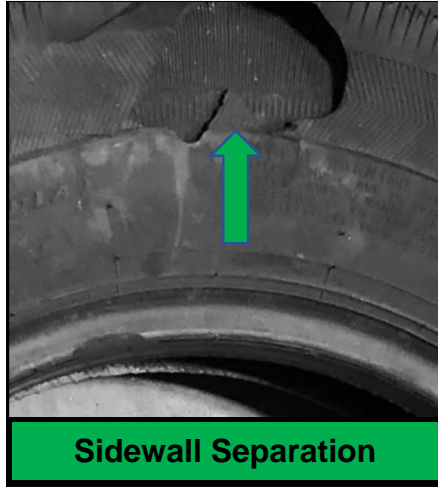
Tire Warranty Conditions



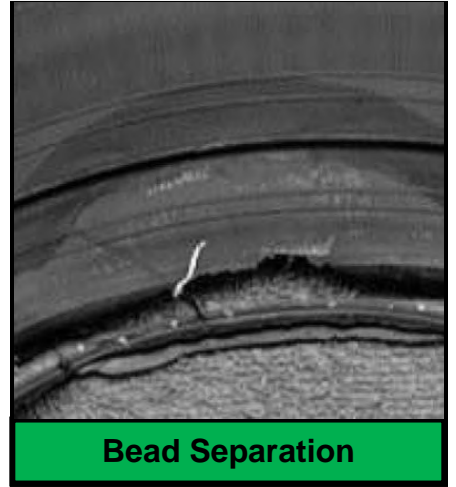
COVERED



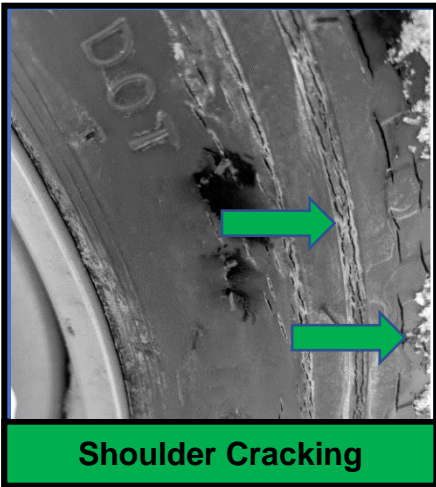
Tread Separation



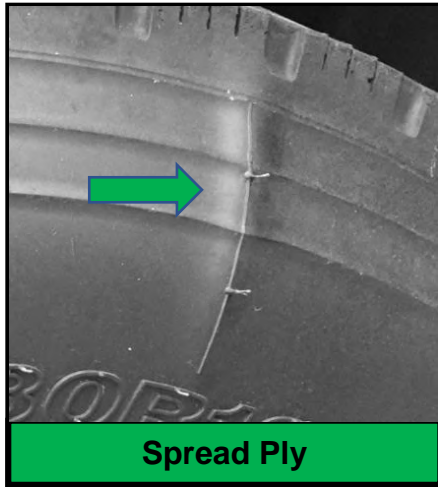
Sidewall Separation



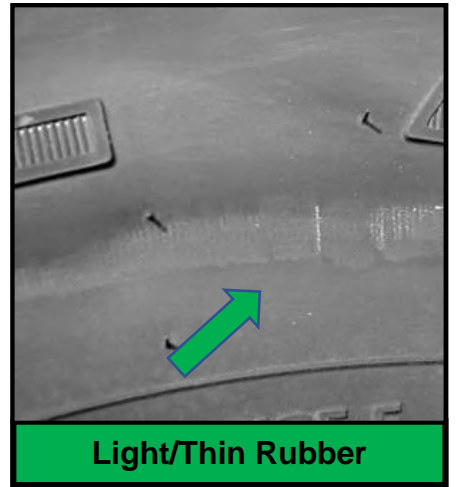
Bead Separation



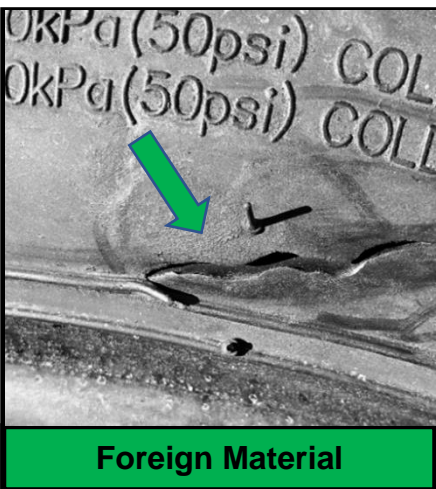
Shoulder Cracking



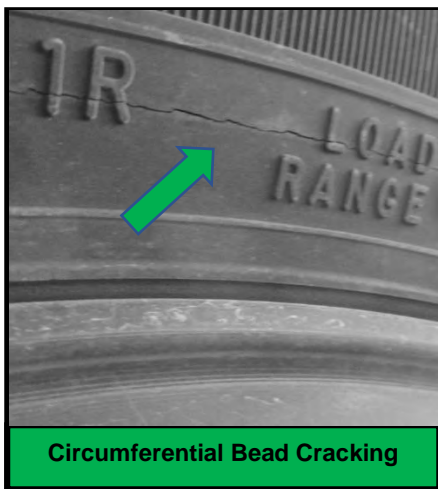
Spread Ply



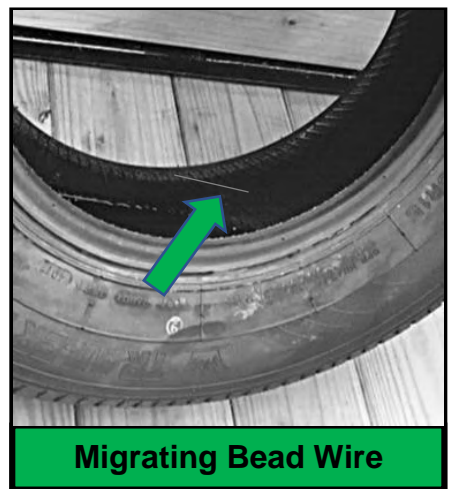
Light/Thin Rubber



Foreign Material



Circumferential Bead Cracking



Migrating Bead Wire

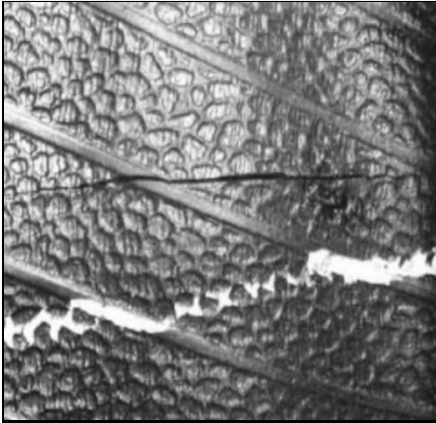
IMPORTANT: The adjustment process does not involve the kind of analysis necessary to determine the existence of a covered warranty condition. The conditions shown are for illustration only and should not be considered as proof of workmanship or material condition. A tire may be adjusted for a condition that may have resulted from one of many possible causes. Neither the presence of a condition nor the fact that a tire is adjusted for a condition establishes that a problem exists in the tire.



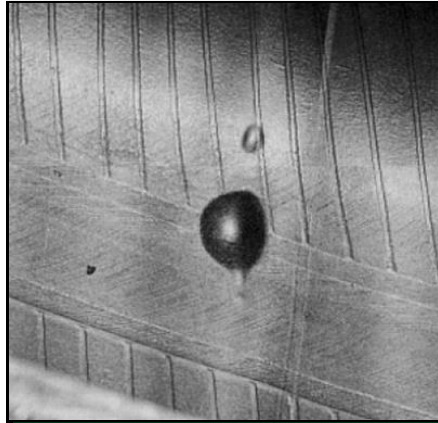
Tire Warranty Conditions



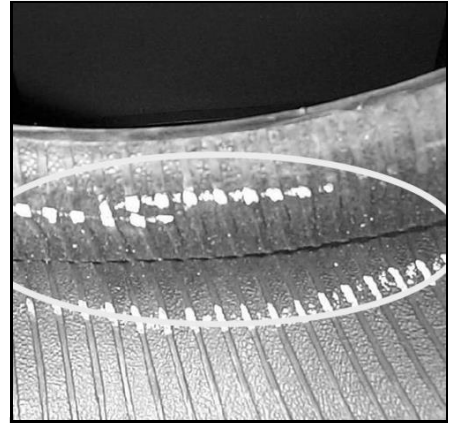
COVERED



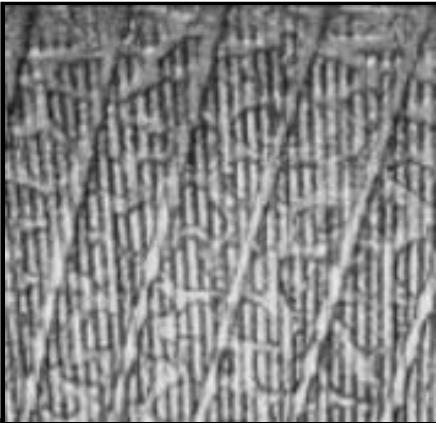
Open Liner Splice



Trapped Air in Liner Over 0.25 in



Liner Crack



Thin Liner

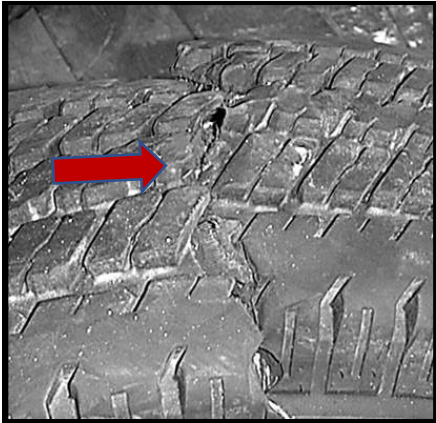
IMPORTANT: The adjustment process does not involve the kind of analysis necessary to determine the existence of a covered warranty condition. The conditions shown are for illustration only and should not be considered as proof of workmanship or material condition. A tire may be adjusted for a condition that may have resulted from one of many possible causes. Neither the presence of a condition nor the fact that a tire is adjusted for a condition establishes that a problem exists in the tire.



Tire Warranty Conditions



NOT COVERED



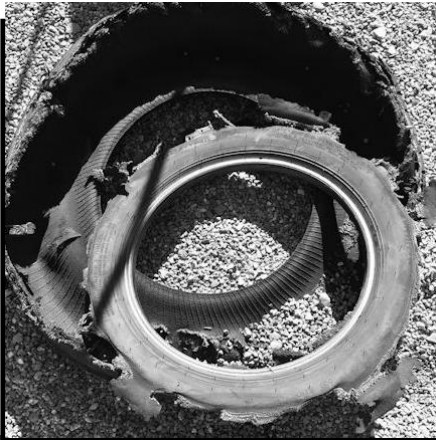
Impact Break - Tread



Impact Break - Sidewall



Puncture Beyond Repair



Ran Underinflated to Destruction



Cut Sidewall or Tread



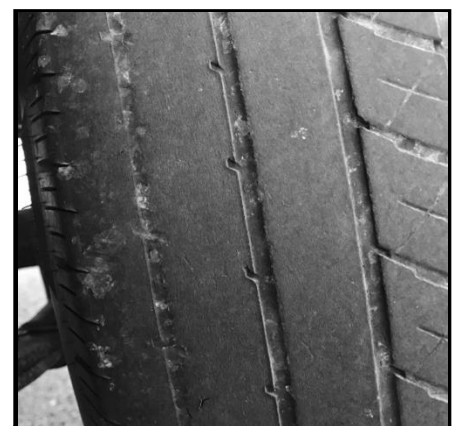
Irregular Wear



Diagonal Wipe



Fast Centerline Wear



Fast Shoulder Wear

IMPORTANT: The adjustment process does not involve the kind of analysis necessary to determine the existence of a covered warranty condition. The conditions shown are for illustration only and should not be considered as proof of workmanship or material condition. A tire may be adjusted for a condition that may have resulted from one of many possible causes. Neither the presence of a condition nor the fact that a tire is adjusted for a condition establishes that a problem exists in the tire.



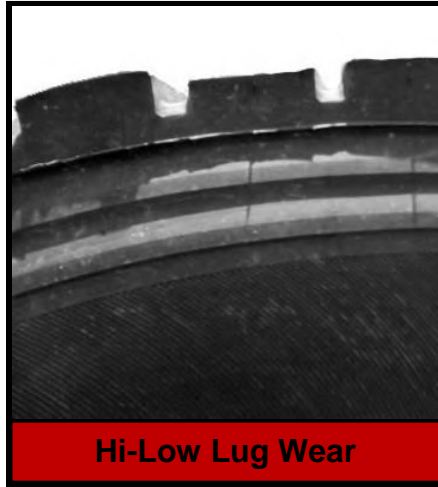
Tire Warranty Conditions



NOT COVERED



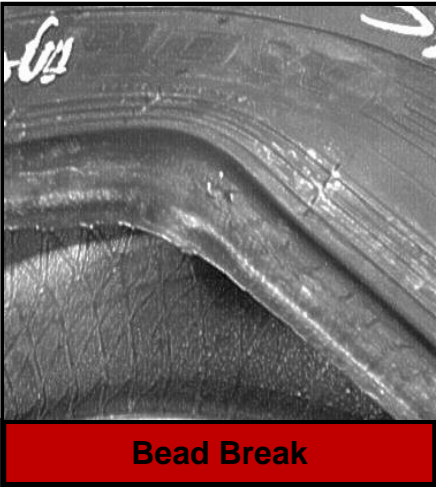
Heel and Toe Wear



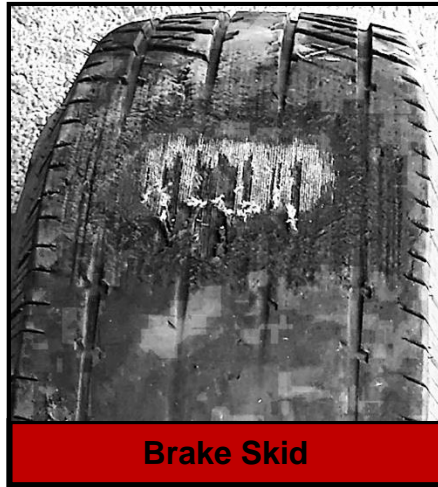
Hi-Low Lug Wear



Mounting Damage



Bead Break



Brake Skid



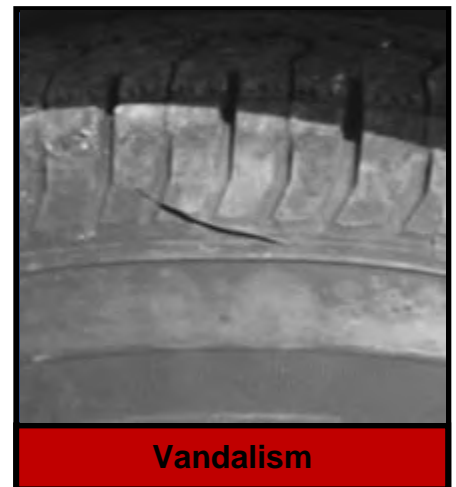
Fabric Fatigue/Zipper Break



Improper Repair



Sealants/Fillers/Balancing Materials



Vandalism

IMPORTANT: The adjustment process does not involve the kind of analysis necessary to determine the existence of a covered warranty condition. The conditions shown are for illustration only and should not be considered as proof of workmanship or material condition. A tire may be adjusted for a condition that may have resulted from one of many possible causes. Neither the presence of a condition nor the fact that a tire is adjusted for a condition establishes that a problem exists in the tire.



Wheel Warranty Conditions



COVERED Warranty Conditions	NOT COVERED Warranty Conditions
<p>PAINT (1-Year):</p> <ul style="list-style-type: none"> • Corrosion • Clear Coat Peeling • Chrome/Galvanized Corrosion <p>CONSTRUCTION:</p> <ul style="list-style-type: none"> • Pinhole Leak • Nonconforming Weld <p>OTHER:</p> <ul style="list-style-type: none"> • Aluminum Lifetime Structural Warranty <ul style="list-style-type: none"> ○ Under intended use • Steel 1-Year Structural Warranty <ul style="list-style-type: none"> ○ Under intended use 	<p>ROAD HAZARDS:</p> <ul style="list-style-type: none"> • Curbing • Bent • Impact Damage • Tire Ran Underinflated to Destruction <p>DAMAGE:</p> <ul style="list-style-type: none"> • Improper Repair • Modification • Mounting Damage • Chemical Contamination • Fire Damage • Vandalism <p>OTHER:</p> <ul style="list-style-type: none"> • Cannot Balance • Over 1-year for appearance • Over 1-year for steel structural • Unit Damages (Fender, Structure, Cargo, etc.)

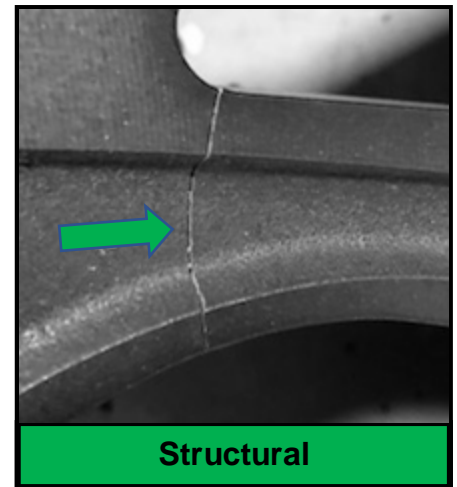
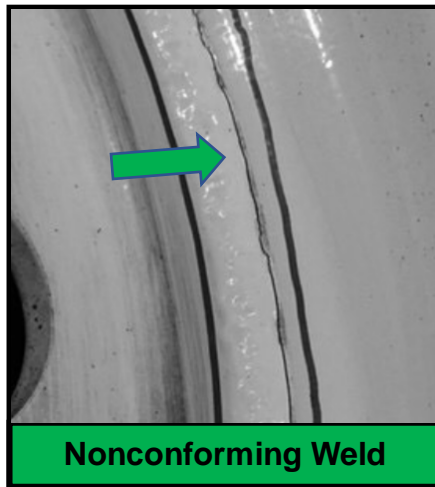
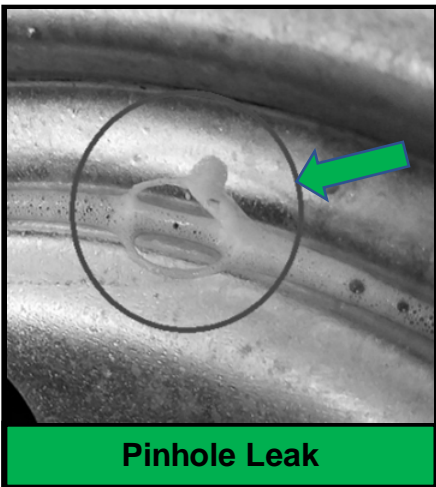
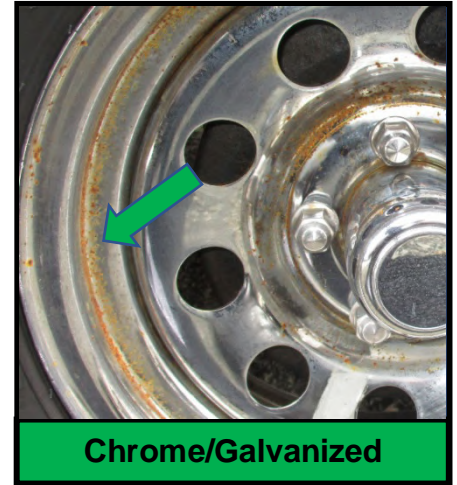
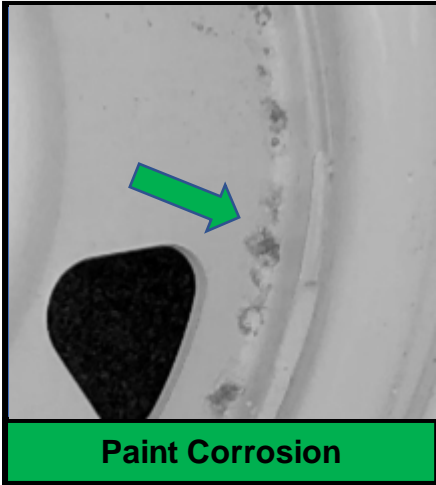
IMPORTANT: The adjustment process does not involve the kind of analysis necessary to determine the existence of a covered warranty condition. The conditions shown are for illustration only and should not be considered as proof of workmanship or material condition. A wheel may be adjusted for a condition that may have resulted from one of many possible causes. Neither the presence of a condition nor the fact that a wheel is adjusted for a condition establishes that a problem exists in the wheel.



Wheel Warranty Conditions



COVERED



IMPORTANT: The adjustment process does not involve the kind of analysis necessary to determine the existence of a covered warranty condition. The conditions shown are for illustration only and should not be considered as proof of workmanship or material condition. A wheel may be adjusted for a condition that may have resulted from one of many possible causes. Neither the presence of a condition nor the fact that a wheel is adjusted for a condition establishes that a problem exists in the wheel.

Rev 03/19



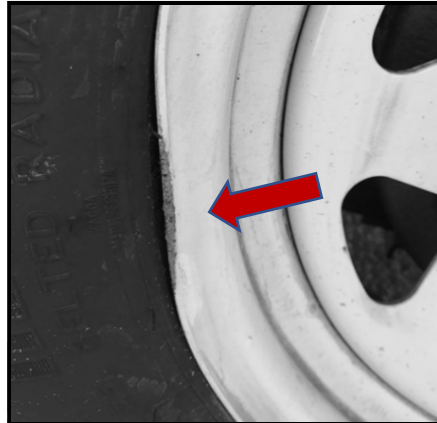
Wheel Warranty Conditions



NOT COVERED



Curbing



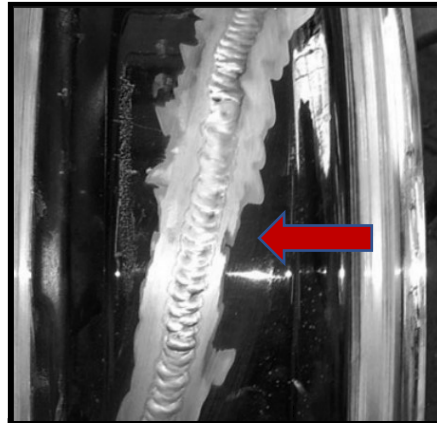
Bent



Impact Damage



Ran Underinflated to Destruction



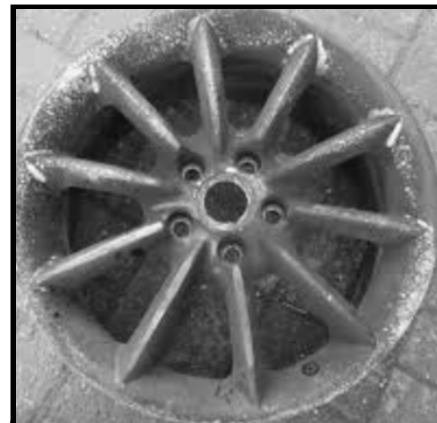
Improper Repair



Modification



Chemical Contamination



Fire Damage



Vandalism

IMPORTANT: The adjustment process does not involve the kind of analysis necessary to determine the existence of a covered warranty condition. The conditions shown are for illustration only and should not be considered as proof of workmanship or material condition. A wheel may be adjusted for a condition that may have resulted from one of many possible causes. Neither the presence of a condition nor the fact that a wheel is adjusted for a condition establishes that a problem exists in the wheel.
Rev 03/19

TREDIT

TIRE & WHEEL

Guarantees.



Simplified.

One Year Replacement Protection

If a product is ever removed from service due to a manufacturing condition, even after extended use, we will replace it or provide reimbursement for an equal product, at our discretion and in accordance with the limited warranty of your tire.

If the product is removed from service for some reason outside of these warranty parameters in the first twelve (12) months of ownership, all registered products are eligible for our replacement and/or reimbursement program.

Remember to complete this registration within 30 days of the retail purchase of the Tires/Unit.

Registration Number

C123456