

PART #9596

Chevy V-8 '58-UP 283-350 SB and 396-427-454 BB engines w/ 4-Speed (Borg Warner or Muncie) or Turbo 350 or 400 automatic transmissions into 1964-70 Buick Special, Skylark, GranSport, Oldsmobile F-85, Cutlass and Pontiac LeMans, GTO Chassis.

READ THIS FIRST

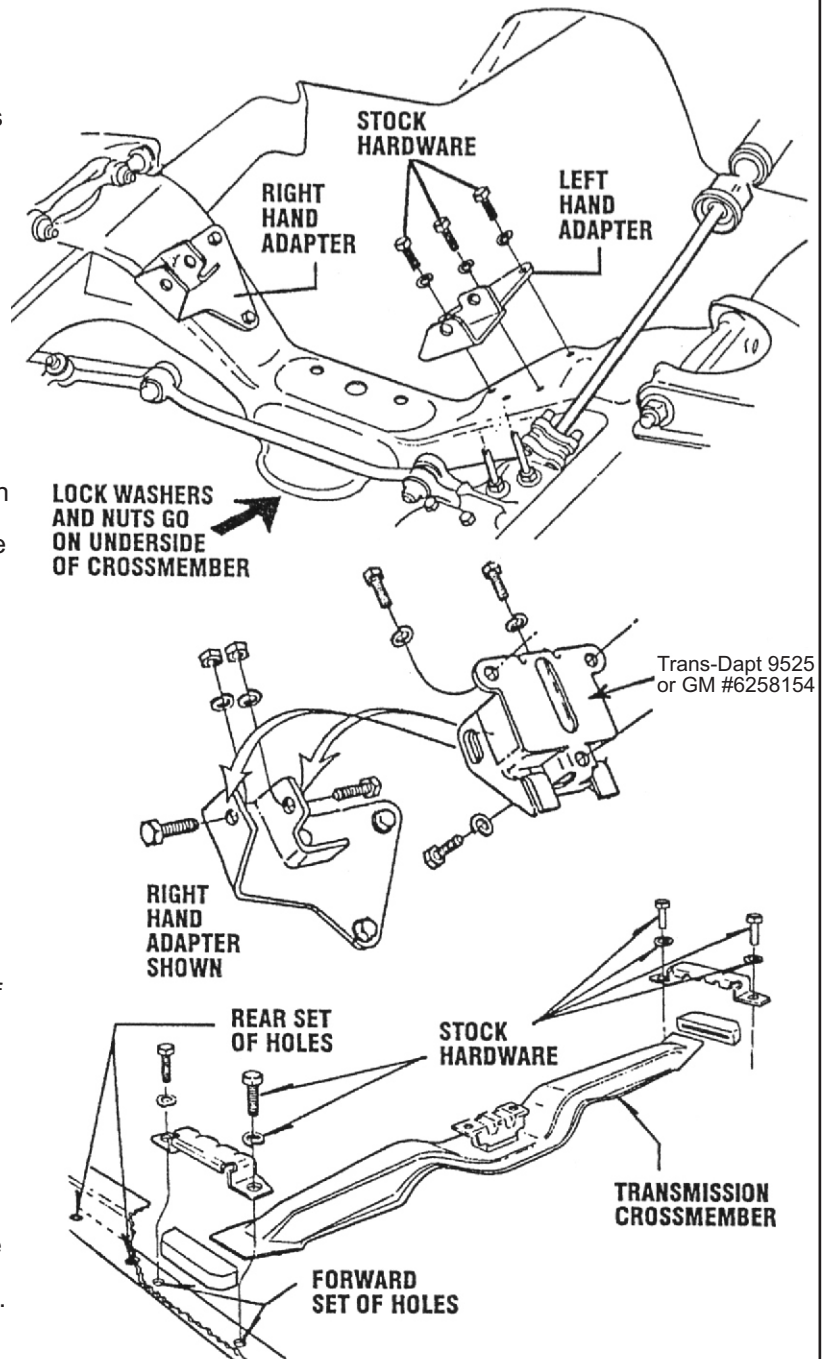
These units are manufactured and offered as an aid in making this conversion. Since no two engine swaps are the same, other changes or modifications may be required. If in doubt, seek professional advice. Trans-Dapt Performance Products is not liable for the misuse and/or the improper use of these mounts. This kit is designed to be used with stock engines only, not for racing. It is the responsibility of the owner/ installer to install the engine safely & properly.

THIS KIT INCLUDES:

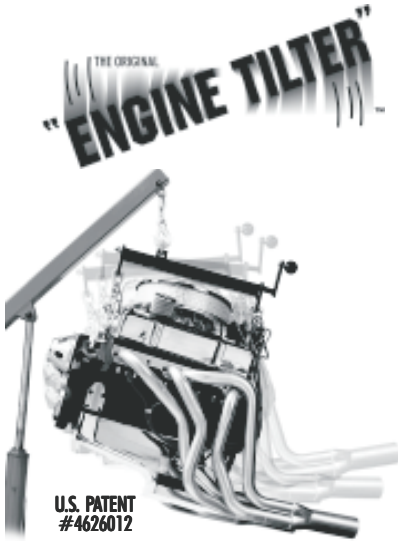
Qty.	Description	Qty.	Description
1	Left & Right Hand Frame Adapter Assembly	4	7/16" Lock Washers
4	7/16-14 x 1" Hex Head Cap Screws	4	7/16"-14 Hex Nuts

INSTALLATION INSTRUCTIONS

1. Assemble new engine and transmission using the oil pan and oil pickup from same year Chevrolet Chevelle chassis as your GM intermediate chassis.
2. Remove stock frame brackets from front crossmember of your GM intermediate chassis.
3. Install the frame adapters in the same positions occupied by stock frame brackets using the stock bolts to fasten.
4. Attach the front mount pads (Trans-Dapt 9525) to the engine block mounting bosses, using the stock bolts and lock washers.
5. Install transmission crossmember in the position that suits the type of transmission you are using. Mount the crossmember between the rear set of holes in the frame channel ledges if you are using the 400 Turbo transmission. Use the forward set of holes for all other transmissions. Use GM trans. mount pad #3913498 for all manual transmissions and Turbo 350 automatic. Use GM trans. mount pad #3872247 for Turbo 400 transmission. (For a list of available transmission crossmembers, see reverse side.)
6. Install engine and transmission. Lower engine into position. Insert the 7/16" X 1" bolts supplied with this kit through the holes in the pads and the holes in the adapter when they line up. See drawing. Fasten with lock washer and hex nuts included. You can use the stock 4-1/2" bolt supplied with the GM pads instead of the 1" bolts supplied in this kit. Do not tighten the 4-1/2" bolt beyond 25 ft. tbs.
7. Install clutch fork from same year Chevrolet Chevelle as your GM Body or use Lakewood clutch fork part no. 15500. We also recommend Lakewood adjustable clutch fork pivot ball part no. 15501.
8. Replace stock clutch cross shaft with one from same year Chevrolet Chevelle chassis as your GM intermediate chassis.
9. Alter the drive shaft as necessary to accept the engine conversion.



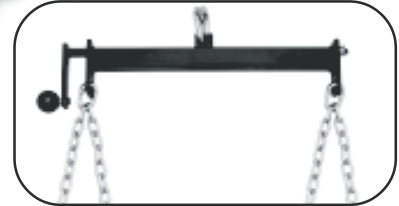
**TO MAKE YOUR ENGINE INSTALLATION EASIER BE SURE TO USE:
THE "ENGINE TILTER" ENGINE LEVELING DEVICE**



The Trans-Dapt "ENGINE TILTER" will save you valuable time & money! It makes engine removal and installation a breeze. The position of the engine can be precisely altered with a simple turn of the handle.



BLACK Powder Coated Finish



The "Engine Tilter" weighs only 14 lbs., but is shop rated with a 1,200 pounds capacity. It comes fully assembled and includes an upper lap link and four 20" chains.

PART#	DESCRIPTION
9099	The "ENGINE TILTER"

NOTE: Four grade 8 bolts & large washers (not included) must be used to attach chains to the engine. In addition, make sure the device holding the tilter has a sufficient shop rating.

If a universal transmission crossmember is needed, Trans-Dapt offers a full line of transmission crossmembers to be used with our motor mount crossmembers. See part numbers below.

PART#
w/ GM Pad
4558
4559
9424
6538
6559
6544

PART#
w/o Pad
4538 - **Straight Universal Crossmember**
4539 - **3" DROP Universal Crossmember**
9444 - **6" DROP Universal Crossmember**
6558 - **Straight 700R4, 4L60E & T56**
6539 - **3" DROP 700R4, 4L60E & T56**
6524 - **6" DROP 700R4, 4L60E & T56**



4559

Design varies by part number.