

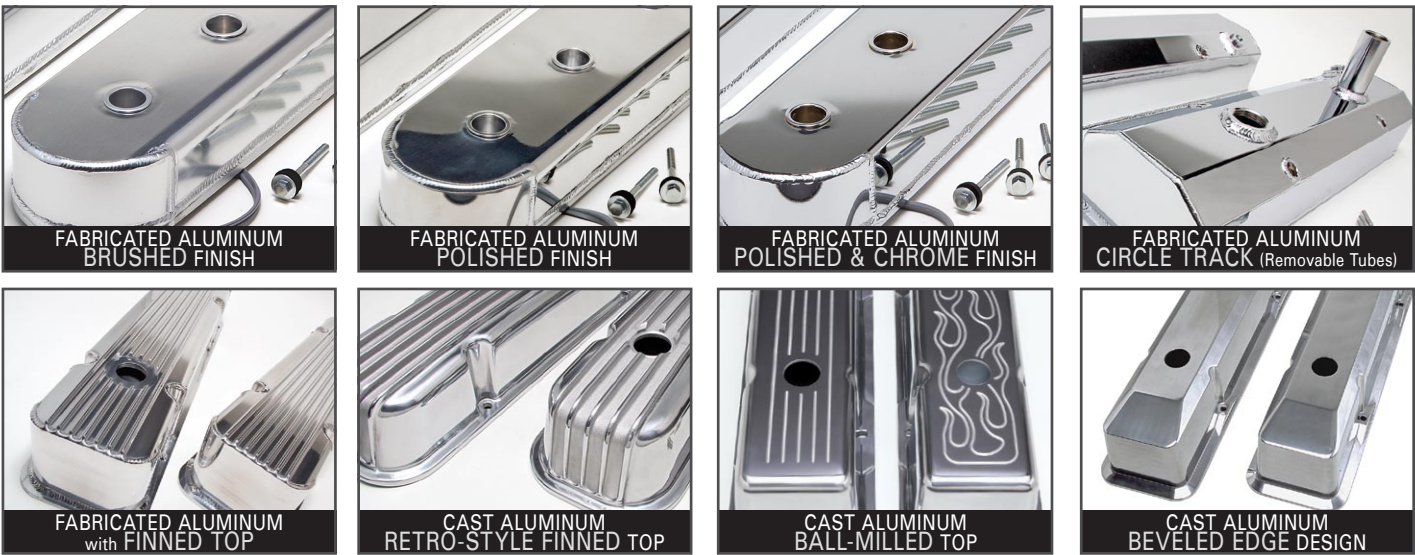
TD TRANS DAPT & **Hamburger's Performance Products**
ENGINE VALVE COVERS

- ▣ Valve Covers For Muscle Cars, Race Cars, Trucks and Show Vehicles
- ▣ Many Styles Available in Multiple Finishes
- ▣ Choose Between Fabricated Aluminum, Cast Aluminum, Chrome, or 1 of 3 Durable, Powder-Coated Finishes
- ▣ Aluminum Models Available with Plain, Ball-Milled or with Retro-Style Fin Top Designs



When someone looks at your engine compartment, your engine's valve covers jump out as one of the first items they see. Make a good first impression by installing a set of Trans-Dapt or Hamburger's Performance valve covers. Over the past 4 decades our line of valve covers has grown to become one of the premier collections of engine valve covers in the industry. From classic chrome steel models to fabricated aluminum models with removable filler tubes for circle track racing, the next seven pages contain a huge variety of application, material and finish options to suit virtually any classic american muscle, hot rod or race car project.

ALUMINUM VALVE COVER STYLES & FINISHES



STAMPED STEEL VALVE COVER STYLES & FINISHES



Proud Members Of The Hedman Performance Group



Learn more about replacement emission control parts we have.