



# Step Pad

Part No. WSP001KIT/WSP002KIT/WSP003KIT/WSP004KIT/

WSP005KIT/WSP006KIT

Fits: Side Bars

## INSTALLATION PROCEDURE

### Remove the old step pads from the Tubes

1. Prepare the tools for removing the old step pads from the tube.



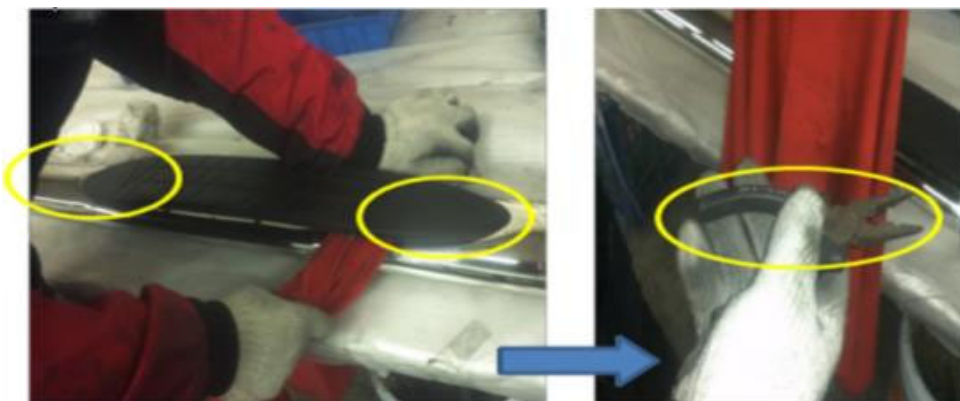
2. Use the cloth to wrap the relieving tool, pry the step pad a little bit then put the wrapped relieving tool between the step pad and the tube.



3. Pry each location of the clip nuts with the relieving tool

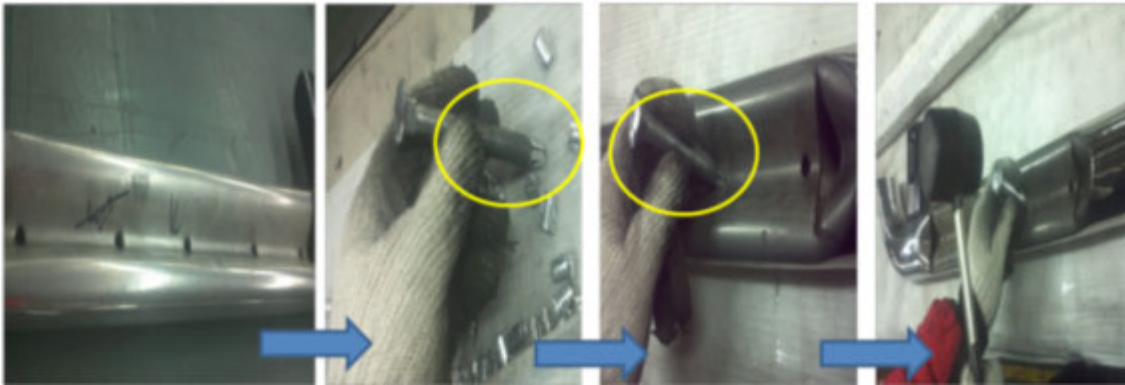


4. The two ends of the old step pads need to be removed by the pincers. Importance: The pincers also need to be wrapped with the colth before working in order to avoid any scratch on the tubes.

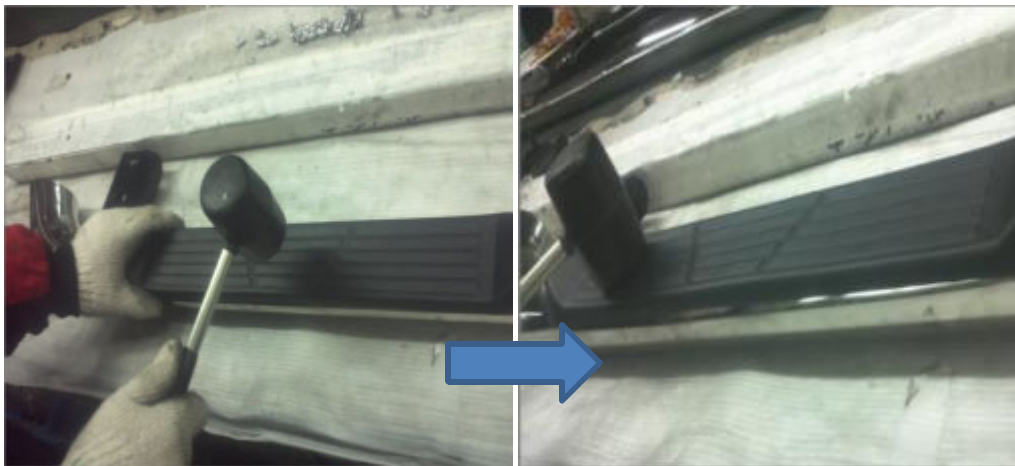


### Install the new step pads to the tube

1. Use the tooling to enlarge the clip nuts a little bit then put them into the hole, beat the tooling with the rubber hammer



2. Put the step pad aligning the clip nuts, hammer both end of the step pad firstly then to the middle location. Secondly, beat the step pad back and forth. Finally, check to make sure there should be no gap between the step pad and the tube.



Complete Installation