



# Running Board

## Part No. R0006MK



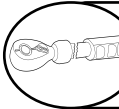
Fits: 2005 - 2012	Nissan Pathfinder	R0006MK/R0002RB
2005 - Current	Nissan Frontier King Cab	R0006MK/R0002RB
2005 - Current	Nissan Frontier Crew Cab	R0006MK/R0002RB



REMOVE CONTENTS FROM BOX. VERIFY ALL PARTS ARE PRESENT.



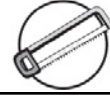
READ INSTRUCTIONS CAREFULLY BEFORE STARTING INSTALLATION.



DO NOT OVER TORQUE. STANDARD OPERATING LOAD FOR TIGHTEN BODY MOUNT NUTS & BOLTS VARIES FROM 45 TO 65 FOOT POUND.



60-180 min



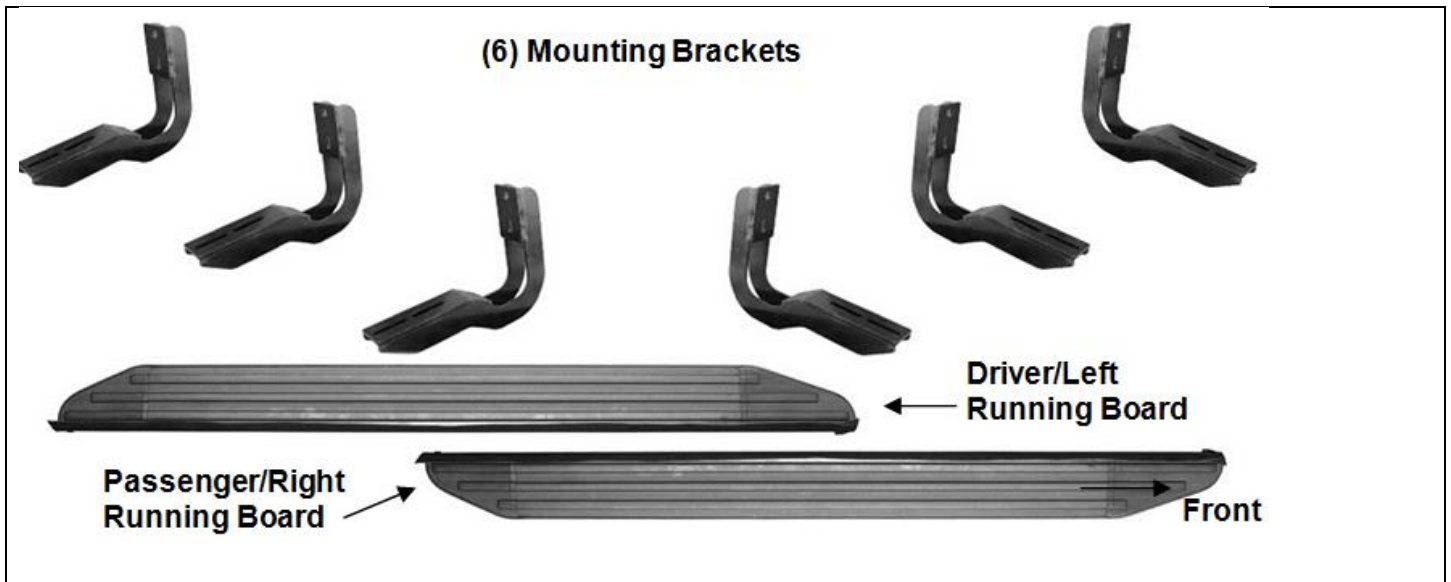
Cutting Required



Drilling Not Required

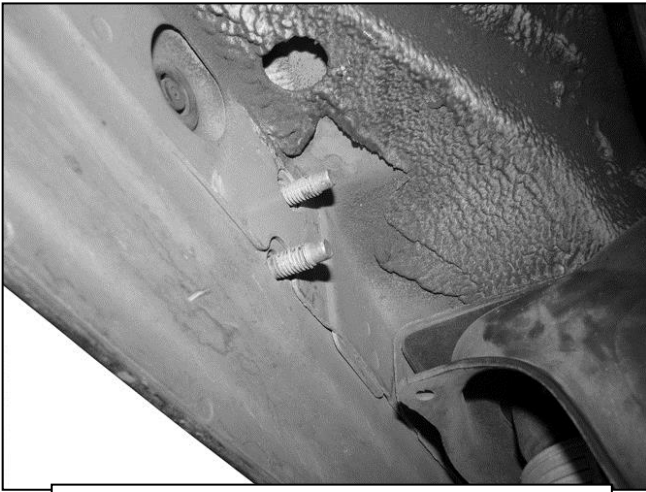
### PARTS LIST:

Qty	Part Description	Qty	Part Description
1	Driver/ Left Running Board	12	8mm Hex Nuts
1	Passenger/Right Running Board	12	6mm "T" Bolts
6	Mounting Brackets	12	6mm x 22mm OD x 2mm Large Flat Washers
12	8mm x 24mm x 2mm Flat Washers	12	6mm Lock Washers
12	8mm Lock Washers	12	6mm Hex Nuts



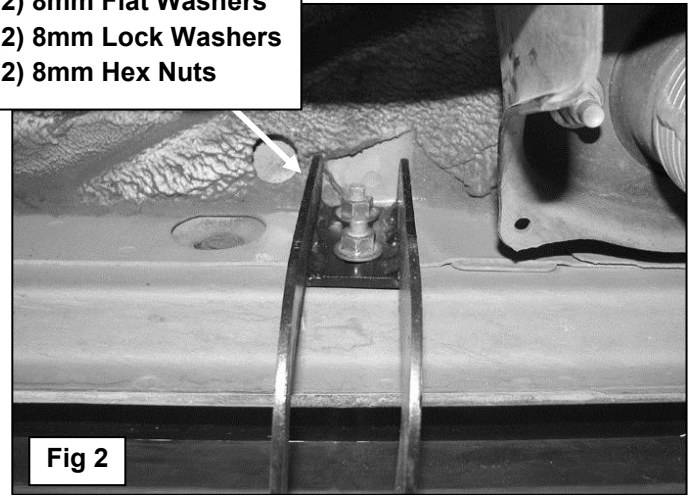
### INSTALLATION PROCEDURE

1. Locate the threaded studs on the inner body panel, **(Figure 1)**. Select (1) Mounting Bracket and hang it from the front mounting location, **(Figures 2 & 3)**. Secure it with the included (2) 8mm Flat Washers, (2) 8mm Lock Washers and (2) 8mm Hex Nuts. Snug hardware but do not tighten at this time.
2. Repeat **Step 1** for the driver side Center and Rear Mounting Bracket installation, **(Figures 2 & 3)**.



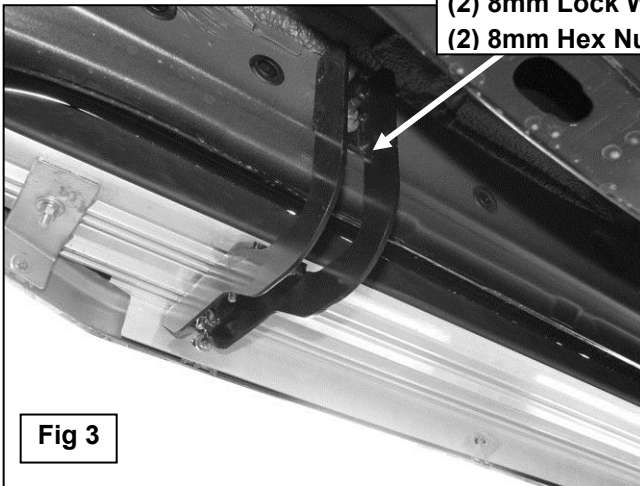
**(Fig 1) Locate factory mounting locations**

**(2) 8mm Flat Washers  
(2) 8mm Lock Washers  
(2) 8mm Hex Nuts**



**Fig 2**

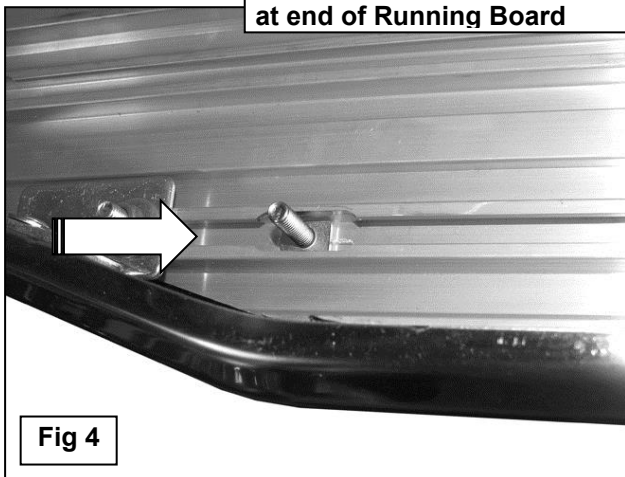
**(2) 8mm Flat Washers  
(2) 8mm Lock Washers  
(2) 8mm Hex Nuts**



**Fig 3**

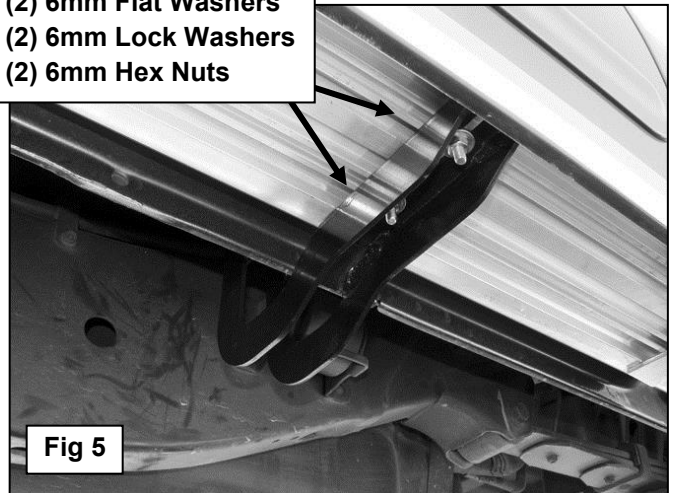
3. Select the driver/left side Running Board. Locate the openings cut at the end of the slots on the bottom of the Running Board, **(Figure 4)**. Insert (3) 6mm T-Bolts into each channel through the openings. Slide the T-Bolts into the approximate position in line with the (3) Brackets.
4. Carefully place the Running Board in position on top of the Brackets. Slide the T-Bolts forward or back until they line up and drop into the slots on the Brackets. Secure the Running Board to the Brackets with (6) 6mm Flat Washers, (6) 6mm Lock Washers and (6) 6mm Hex Nuts, **(Figure 5)**. Do not tighten hardware at this time.

**Slide 6mm T-Bolts into slots  
at end of Running Board**



**Fig 4**

**(2) 6mm T-Bolts  
(2) 6mm Flat Washers  
(2) 6mm Lock Washers  
(2) 6mm Hex Nuts**



**Fig 5**

5. Adjust and level the Running Board and tighten all hardware.

6. Repeat **Steps 1 - 5** for passenger Running Board installation.



## PRODUCT CARE

- Periodically check the product to ensure all fasteners are tight and components are intact.
- Regular waxing is recommended to protect the finish of the product.
- **Use ONLY Non-Abrasive automotive wax.** Use of any soap, polish or wax that contains an abrasive is detrimental and can scratch the finish leading to corrosion.
- Aluminum polish may be used to polish small scratches and scuffs for **Stainless Steel finish.**
- Mild soap may be used to clean the product for both **Stainless Steel and Black finish.**

## FAQ's

**1. Hardware's are not of correct size.**

*In GMC / Chevrolet truck model 2006 & up, customer needs to reuse the factory body bolts to install the bracket. If your vehicle is not GMC / Chevrolet 2006 & up, ensure that holes are not partially covered with any plastic grommet or rust? If it is, remove the plastic grommet & rust from the thread holes & re-try the installation.*

**2. Mounting Bracket are not getting Installed properly.**

*In some cases Illustration images shown in Installation manual may not be the exactly same as per actual vehicle images ,also if Driver / Passenger side mounting brackets are very identical in the design, suggest referring Parts Identification guide to avoid fitment issue.*

**3. Products are thumping / rattling after installation.**

*Ensure that all required mounting brackets / hardware's are installed & tighten correctly. Suggest using white lithium / regular grease between the metal to metal contact surfaces.*

**4. Side Bar is not aligning with vehicle / Step Pads are not aligning with vehicle doors.**

*Side bar may be interchanged or mounting brackets are not installed at the correct position in the vehicle. Refer Parts identification guide.*

**5. Missing / Excess Hardware.**

*Recheck hardware count as per the part list.*

**6. Product not installing properly.**

*Ensure make model year, cab length and bed size of your vehicle is listed in the application. All installation steps are followed correctly.*