



Fender Flare

PFFF3006T / PFFF3006S



2018 - Current:

Ford F-150 - All Models



DOES NOT FIT RAPTOR



REMOVE CONTENTS FROM BOX. VERIFY ALL PARTS ARE PRESENT.



READ INSTRUCTIONS CAREFULLY BEFORE STARTING INSTALLATION.



PLEASE USE SAFETY GLASSES & ENSURE TO BLOCK VEHICLE MOVEMENT DURING INSTALLATION PROCESS



60-180 min



Cutting Required



Drilling Not Required

IMPORTANT: DO NOT OVER-TIGHTEN THE MOUNTING SCREWS.

OVER-TIGHTENING THE SCREWS WILL RESULT IN STRESS FRACTURES.

KIT INCLUDES

Qty	Part Description	Qty	Part Description
2 ea.	Front Flares (A)	14 ea.	8x 3/4" mounting screw (G)
2 ea.	Rear Flares (B)	34 ea.	Button head stainless steel bolts (H)
1 ea.	Rubber edge trim (27 ft.) (C)	2 ea.	S clips (I)
8 ea.	XL speed clips (D)	2 ea.	mounting bolts (J)
2 ea.	speed clip (E)	34 ea.	Nylon Jam Nut (K)
6 ea.	Slot bracket (F)		

TOOLS NEEDED

Stubby Ratchet	Phillips head screw driver
13mm socket with extension	2mm Phillips head bit
5.5 mm socket	Utility knife
4.5mm Hex key	

A



B



C



D



E



F



G



H



I



J



K



PRIOR TO INSTALLATION

- Read these instructions before beginning the installation
- Make sure kit is complete before beginning installation
- Ensure you have the correct TrailFX fender flares for your vehicle before beginning the installation process.

NOTE: The flares are embossed with either a D or P indicating Passenger or Driver. Make sure you match the correct flare to the side of the vehicle you are installing.

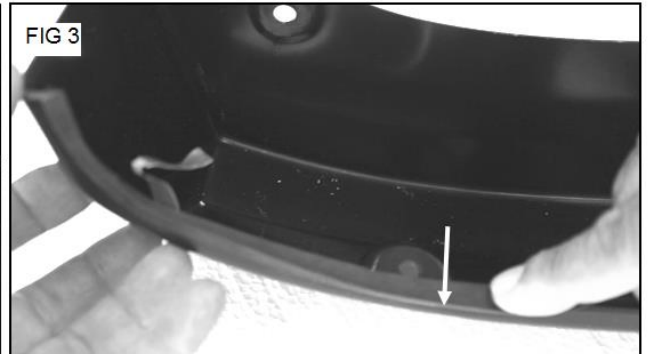
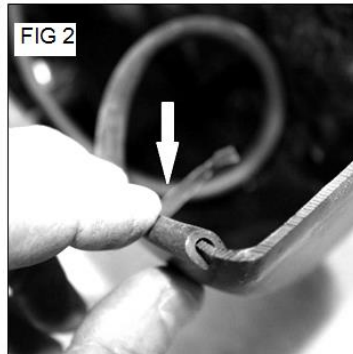
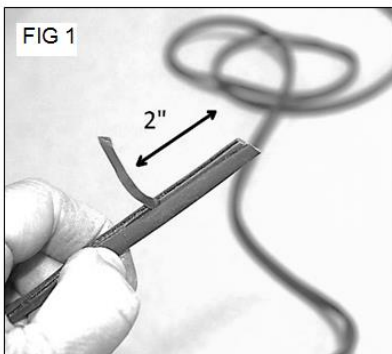
- If you plan on painting your fender flares it must be done prior to installation. All surfaces must be cleaned and prepped following the specifications outlined by the paint manufacturer.

PLEASE NOTE: Painted flares cannot be returned.

STEP 1

INSTALLING RUBBER TRIM ON NEW FENDER FLARES

- Locate the supplied "U" shaped rubber edge trim. Peel back approx. 2" of the red lining. FIG 1
- Starting at one end of the flare, push the trim onto the edge of flare. Make sure the red liner sits inside the flare FIG 2
- Continue pressing the rubber trim on to the flare in 6" increments. FIG 3
- Peel back 6 inches of the red liner and firmly press the trim to bond to the flare. FIG 4 and 5
- Repeat steps 3 and 4 until you have gone completely around the flare. Cut the trim to length.
- Repeat this process for the remaining flares.

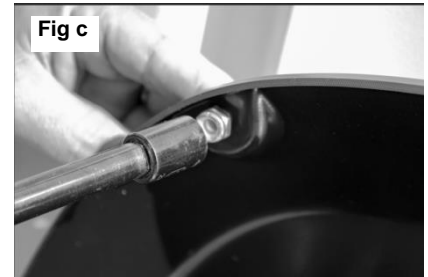


STEP 1

INSTALLTION OF BUTTON HEAD STAINLESS STEEL BOLTS

- Locate the supplied Button head stainless steel bolts, and nylon jam nuts. Install one Button head stainless steel bolts in one of the holes in the recess of the flares as shown below in the **Fig. a**
- Proceed to the inside of the flare. Place a nylon jam nut on the threads of the button head bolt and tighten. Use a 13mm socket with an extension and a 4.5mm Hex key as shown in **Fig. b and c** to complete task

Note: These bolts are decorative only and are not intended for securing the flares

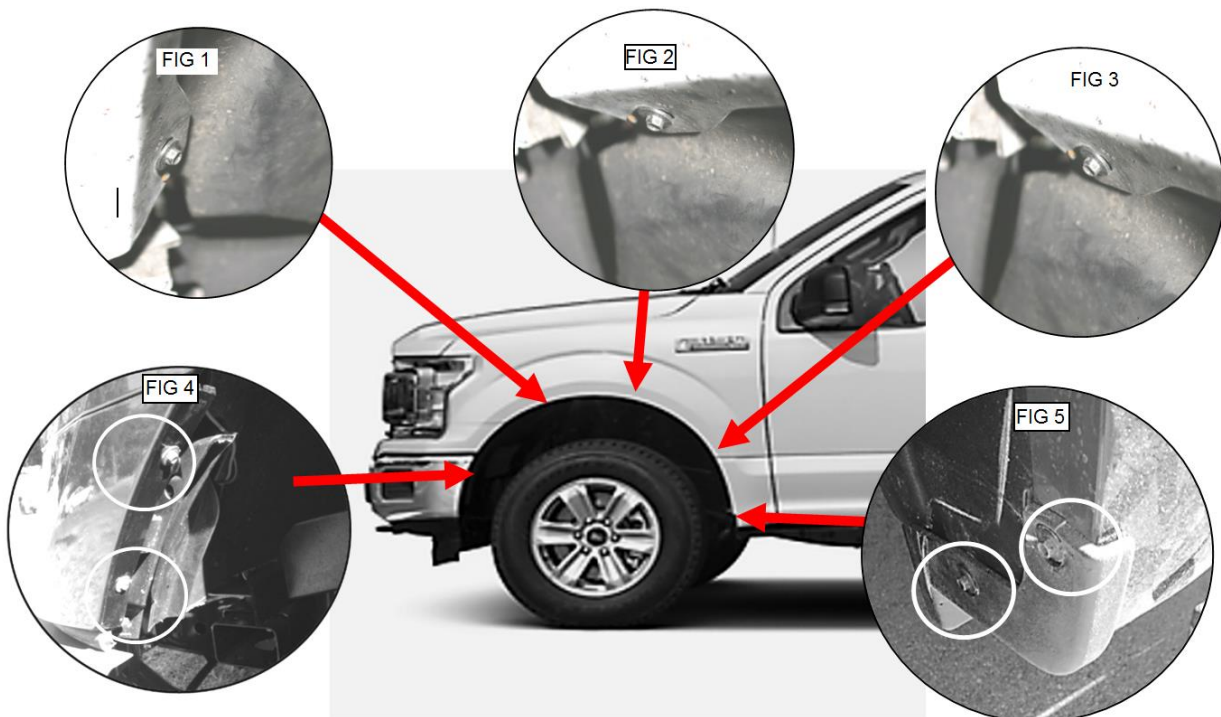


INSTALLING FRONT FENDER FLARES

Step 1

Supplied Mounting Bracket Installation

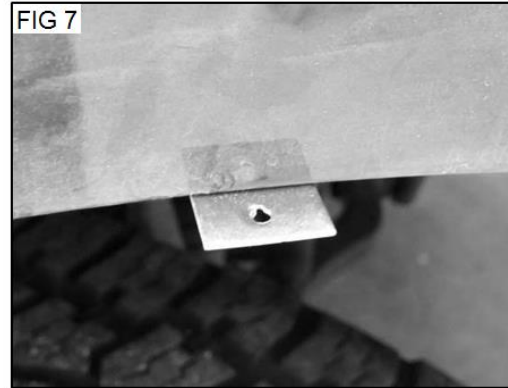
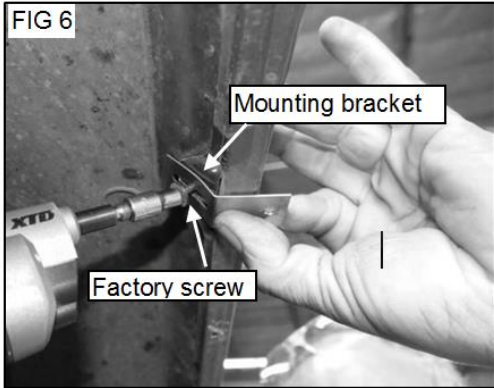
- Locate three factory screws on the inner wall of the wheel well lip. Fig. 1,2 and 3
- Using a 5.5 mm socket remove and set aside these two screws.
- Using a 5.5 mm socket remove two factory screw located at bottom front of wheel well. Fig. 4
- Next remove two factor screws which attach the factory plastic mud guard. Do not discard mud guard. Set screws aside for later use. Fig. 5



Step 2

Slide a factory screw removed in step one through the slot on a supplied slot bracket (F). Fig. 7

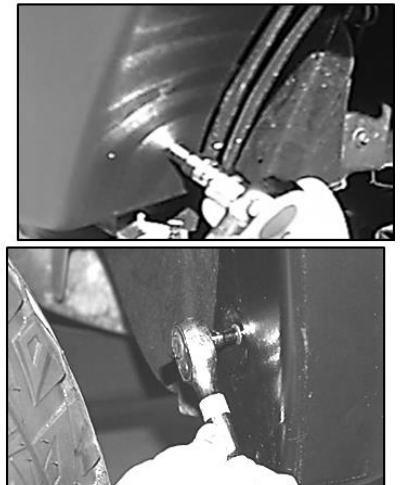
- Start the screw into the one of the factory holes and using a 5.5 mm socket tighten the screw unit the bracket is securely mounted. Fig. 7 (Do Not Over tighten screw)
- Install the other 2 mounting bracket in the other factory holes by repeating steps above.
- Repeat step for other side of vehicle.



Step 3

Place flare (A) against fender. Align the holes in the flares with the holes in the mounting brackets. Fig 8

- Using a 2mm Phillips screw driver proceed to install 3 supplied 8 x 3/4" mounting screws (G) through the flare and into the mounting brackets. Fig 10 and 11
- Using a 5.5 mm socket re-install the four factory screws (removed in step 3 above) Fig 12 and 13 Repeat steps 1-5 for the other side.



INSTALLING REAR FENDER FLARES

Step 1

Have an assistant place the flare (B) on the fender. Adjust the flare for best fit. Fig 1

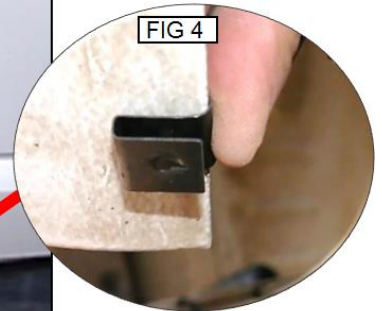
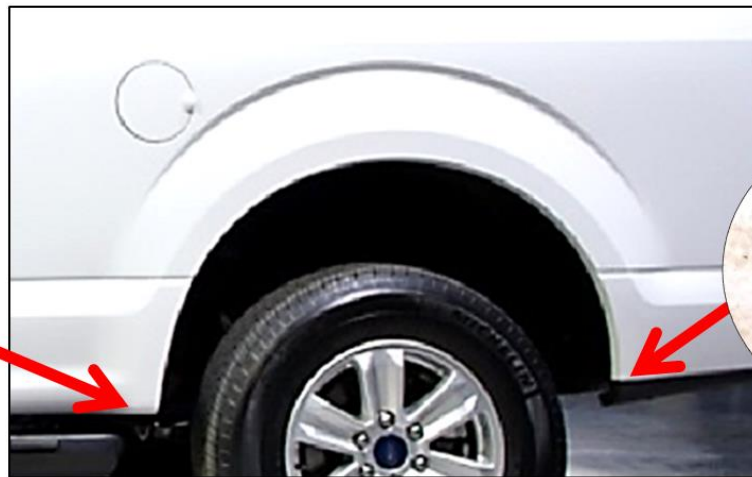
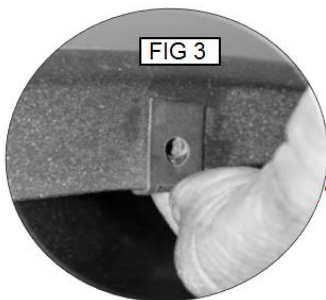
- Using the pilot holes in the flare as a guide place a mark on the lip of the wheel well. Fig 2



INSTALLING REAR FENDER FLARES

Step 2

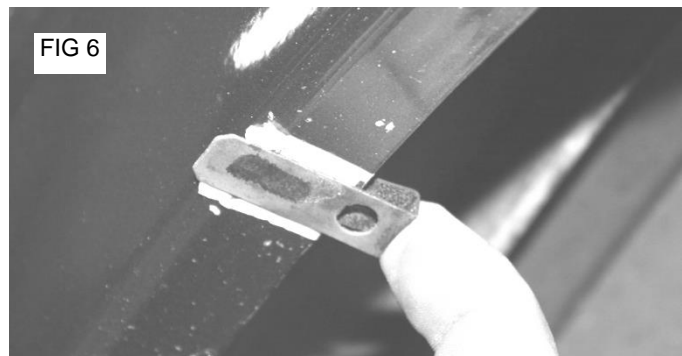
- Slide a supplied speed clip (E) over the factory hole. Fig 3
- Slide a supplied S clip (I) onto the vehicle. Fig 4



Step 3

Remove the Fender flare.

- Place a piece of masking tape on the wheel well lip over the marks you made in step 2 above. Fig 5
- Slide a XL speed clip over the taped areas. Fig 6



INSTALLING REAR FENDER FLARES continued

Step 4

Have your assistant place and hold the flare back on the fender.

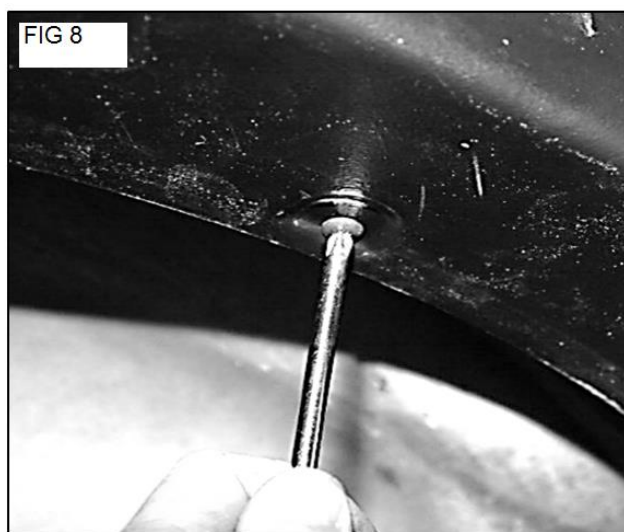
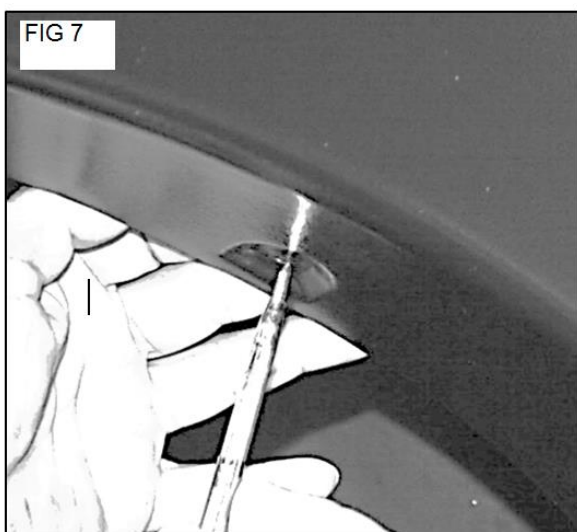
- Proceed to the bottom rear hole in the flare. Line up the hole in the flare with the factory hole.
- Install supplied mounting bolt (J) through the flare and onto the S clip.
- Install the supplied 8x 3/4" mounting screw through the flare and onto the speed clip (E). Fig 8



Step 5

Proceed to the top holes in the Fender flare.

- Reach under the wheel well and adjust the long speed clip installed in step 2 above until the hole in the flare lines up with the hole in the speed clip. *Tip.* Insert a punch into the hole in the flare to help center the speed clip. Fig 7
- Firmly push the flare against the fender and install one supplied 8 x 3/4" mounting screw (G) through the flare and into the speed clip. Do not fully tighten screw at this time. Fig 8
- Repeat this process for the other holes in the flare always putting pressure against the flare when installing the mounting screw.
- Once all screws have been installed proceed to tighten all screws showing care not to over tighten.
- Repeat steps above for the other side of the vehicle.



PRODUCT CARE

1. Periodically check the product to ensure all fasteners are tight and components are intact.
2. Regular waxing is recommended to protect the finish of the product.

FAQ's

1. Fender flares are loose after installation.

Please ensure that all required mounting brackets / hardware's are installed & tighten correctly.

2. Missing / Excess Hardware.

Re-check hardware count as per the part list.

Check out these other TrailFX Products!!



FULL FRONT REPLACEMENT BUMPER



REAR REPLACEMENT BUMPER



3.5 INCH OVAL BULL BAR



6" OVAL BENT STEP BAR

Keystone Automotive Operations Inc. (KAO) warrants this product to be free of defects in material and workmanship at the time of purchase by the original retail consumer. KAO disclaims any other warranties, express or implied, including the warranty of fitness for a particular purpose or an intended use. If the product is found to be defective, KAO may replace or repair the product at our option, when the product is returned prepaid, with proof of purchase. Alteration to, improper installation, or misuse of this product voids the warranty. KAO's liability is limited to repair or replacement of products found to be defective, and specifically excludes liability for any incidental or consequential loss or damage.