

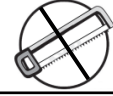


50" DOUBLE ROW CURVED LIGHT MOUNT
Part No. MBC01B



Fits: **2014 - Current**
2014 - Current

Chevrolet Silverado 1500/2500/3500 HD
GMC Sierra 1500/2500/3500 HD



35-45 min

Cutting Not
Required

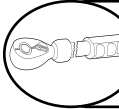
Drilling
Required



REMOVE CONTENTS FROM BOX. VERIFY ALL PARTS ARE PRESENT.



READ INSTRUCTIONS CAREFULLY BEFORE STARTING INSTALLATION.



DO NOT OVER TORQUE. STANDARD OPERATING LOAD FOR TIGHTEN BODY MOUNT NUTS & BOLTS VARIES FROM **45** TO **65** FOOT POUND.

PARTS LIST:

| Qty | Part Description | Qty | Part Description |
|-----|----------------------------------|-----|---------------------------|
| 1 | Light Bar Driver Side Bracket | 4 | 15.14 mm x 8.9 mm Bolts |
| 1 | Light Bar Passenger Side Bracket | 4 | 284 mm x 6.18 mm Screws |
| 2 | Gaskets | 4 | 15.1 mm x 3.76 mm Washers |

TOOLS NEEDED

| Part Description | Part Description |
|------------------------|------------------------------|
| 8mm, 10mm Sockets | 1/8", 1/4", 5/16", 3/4" High |
| T15 Torx Bit | Quality Hardened Drill Bits |
| Flat Head Screw Driver | 7/16" Wrench |
| Center Punch | 1/8", 5/32" Hex Bit |
| Electrical Tape | Marker |



Mounting Bracket Installation

1. Remove bracket kit from packaging. Check to see if all parts from above kit contents table are included.
2. Remove driver and passenger pillar trim, from inside cab, by pulling straight out. If pillar trim has handle, use 10mm socket to remove two bolts before pulling trim off.
3. Remove driver and passenger assist handle from inside cab. Use 8mm socket to remove two bolts on each.
4. Remove driver and passenger sun visor from headliner inside cab. Use T15 torx bit to remove 3 bolts on each.
5. Place piece of scrap metal or plastic in roof liner against passenger and driver door to make sure drill bit doesn't pierce through side curtain airbags.
6. Use flat headed screw driver to pop off both plastic trim drip rails from roof, 6 clips hold each drip rail on.
7. Place tape in both drip rails where bracket will be mounted and mark drill holes with a marker. See **Figure 1** for mounting location.
8. Center punch each hole, drill 5/16" hole for rivet nuts to be inserted into. If holes are bigger than 5/16", the rivet nut will not install correctly.

(Recommend using new high quality hardened drill bits and starting with a 1/8" bit followed by a 1/4" bit and finally a 5/16" drill bit to drill holes)

9. Place a #10 flat washer, hex nut, another #10 flat washer and rivet nut on black hardened steel bolt, shown in **Figure 2**, and place in drilled hole. Use a 7/16" wrench to hold nut and 5/32" hex bit to turn the hardened steel bolt until rivet nut is tightened down. **(Do not install with drill, use hand tools only)**. Remove hardened steel bolt, flat washers and hex nut. Repeat in all four holes.
10. Mount brackets with pan head screws. Use 1/8" hex bit to tighten down screws. **(Recommend sealing rivet nut areas up with RTV Silicone and using thread locker for bracket screws)**
11. Mount 50" light bar between brackets. Refer to light bar instruction for installation.

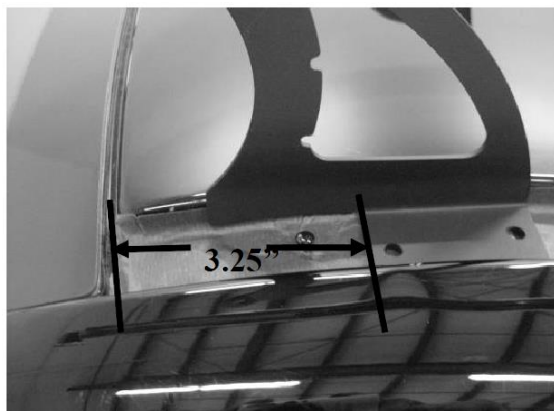


Figure 1

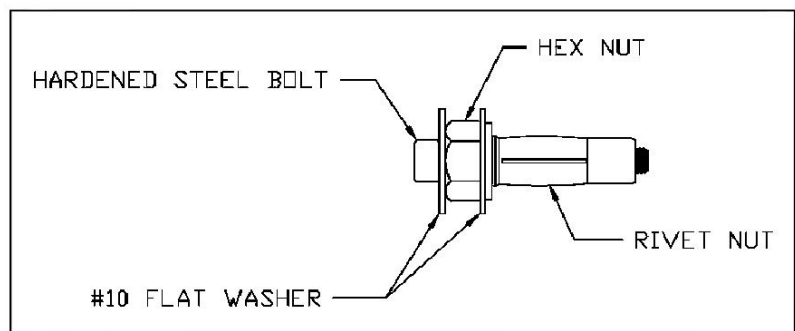


Figure 2

Wiring Installation

1. Drill 3/8" hole through fire wall; verify that opposite side of fire wall is clear of obstructions. Insert grommet into hole.
2. On the wiring harness, remove black plastic sleeve covering the red and black power wires between the relay and the fuse holder
3. Cut red power cable behind fuse holder, be sure to leave enough wire to wire this piece back into the harness
4. Insert the red power cable through the grommet that was installed in step 1. Leave the rest of the wiring harness by foot pedals in cab of truck for now. Bring red power cable up into engine bay.

PRODUCT CARE

- Periodically check the product to ensure all fasteners are tight and components are intact.
- Regular waxing is recommended to protect the finish of the product.
- **Use ONLY Non-Abrasive automotive wax.** Use of any soap, polish or wax that contains an abrasive is detrimental and can scratch the finish leading to corrosion.

FAQ's

1. Mounting Bracket are not getting Installed properly.

In some cases Illustration images shown in Installation manual may not be the exactly same as per actual vehicle images ,also if Driver / Passenger side mounting brackets are very identical in the design, suggest referring Parts Identification guide to avoid fitment issue.

2. Products are thumping / rattling after installation.

Ensure that all required mounting brackets / hardware's are installed & tighten correctly. Suggest using white lithium / regular grease between the metal to metal contact surfaces.

3. Missing / Excess Hardware.

Recheck hardware count as per the part list.

4. Product not installing properly.

Ensure make model year, cab length and bed size of your vehicle is listed in the application. All installation steps are followed correctly.

Check out these other FX-Products Products!!



BULL BAR



GRILLE GUARDS



BED RAILS



RUNNING BOARDS

Keystone Automotive Operations Inc. (KAO) warrants this product to be free of defects in material and workmanship at the time of purchase by the original retail consumer. KAO disclaims any other warranties, express or implied, including the warranty of fitness for a particular purpose or an intended use. If the product is found to be defective, KAO may replace or repair the product at our option, when the product is returned prepaid, with proof of purchase. Alteration to, improper installation, or misuse of this product voids the warranty. KAO's liability is limited to repair or replacement of products found to be defective, and specifically excludes liability for any incidental or consequential loss or damage.