



**Assembly, Installation, Operation and
Maintenance Instructions
Slant Back Soft Top Kit**

**Part Number:
JT SB03**

120 - 180 minutes

Dealer / Installer: Provide a copy of these instructions to the end user of this product. These instructions provide important operating and safety information for proper usage of this product. Demonstrate the proper use of the product with the end user. Have the end user demonstrate that they understand the proper use of the product.

End User: Read and follow all instructions included in this manual. Ask your Dealer / Installer for assistance if you do not understand the proper use of the product. Never remove any decals from the product. Failure to follow these instructions can result in injury or death.

⚠️ WARNING ⚠️

APPLICATION: 2007 – 2018 Jeep Wrangler JK 4 Door

⚠️ WARNING ⚠️ Loss of vehicle control involves risk of death or serious injury, particularly to parts of your body not restrained within vehicle. This product is intended for weather protection only and should not be relied upon to contain occupants in the event of an accident or to protect from either ground contact or falling objects. To reduce risk of accident or injury:

- ALWAYS WEAR SEATBELTS
- Always keep head, arms & body parts within vehicle
- Fully secure or stow the soft top before driving according to instructions. Never try to latch or fold soft top while driving. Do not use if damaged or worn
- Read and follow all instructions & warnings accompanying this product, in your vehicle owner's manual and Off-Road Driving Supplement.
- RISK OF EYE INJURY. Safety glasses should be worn at all times while installing or maintaining this product

Parts List

Description

Qty

Top deck/header assembly	1
Rear bow assembly	1
Center bow assembly	1
Driver's side door surround	1
Passenger side door surround	1
Driver side quarter window	1
Passenger side quarter window	1
Rear window	1
Door surround knobs-Long	4
Door Surround Knobs-Short	2
Rear strap assemblies	2
Over door bow quick release	2
Tailgate Bar Clips	2
Tailgate Bar	1

Tools Required

Safety Glasses
Phillips Head Screwdriver
Flat Head Screwdriver
4mm Allen Head Tool
Pliers
Socket Wrench
13mm Socket

This Complete Soft Top kit is designed to fit on your JKU Jeep® Wrangler when the hard top or original soft top has been completely removed. Before beginning your installation of this product, carefully remove your hard top or current soft top and soft top hardware.

For a smooth fit and ease of installation, this top should be installed at temperatures above 72 degrees. Below this temperature, the fabric may contract an inch or more making it difficult to install. We highly recommend taking the top out of the package and letting it sit inside a warm place or direct sunlight for 1-2 hours before you install the top. When warm, this top will install quickly.



INSTALLATION PROCEDURE:

Step 1: Assemble Rear Door Surrounds

Locate the two Rear Door surround components (Horizontal and vertical pieces for both Driver's and passenger sides. In the horizontal door surround, there is a screw and washer installed for shipping (Fig 1). Remove this screw and washer using a 4mm Allen head tool and set aside (do not lose this screw/washer!). Line up the vertical and horizontal door surround components as shown in (Fig's 2 & 3) making sure the holes line up. Place the washer over the top of the hole as shown in Fig 4 and insert the screw (Fig's 5 & 6). Tighten this screw securing the two pieces (Fig 7). Repeat this procedure on the other rear door surround.



Fig 1

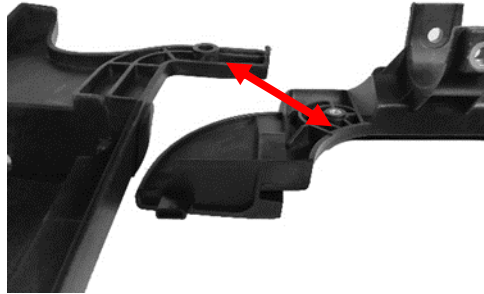


Fig 2



Fig 3



Fig 4



Fig 5

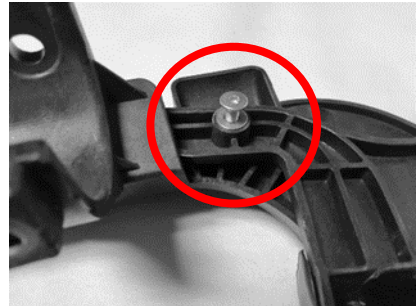


Fig 6



Fig 7

INSTALLATION PROCEDURE:

Step 2: Install Door Surrounds to Jeep

Locate the assembled Driver's side rear door surround (Fig 8). On the bottom of the vertical pillar portion of the assembled door surround is a pin that will be inserted into the body tub as shown in the inset on Fig 8. Insert this pin into the body tub as shown in (Fig's 9 & 10). After inserting the pin, locate the upper portion of the door surround "C" attachment and push onto roll bar (Fig's 11 & 12). The "C" should fit in the cutout of the roll bar pad. Line up the threads in the "C" with the top hole in the roll bar. Repeat this procedure on the passenger side.

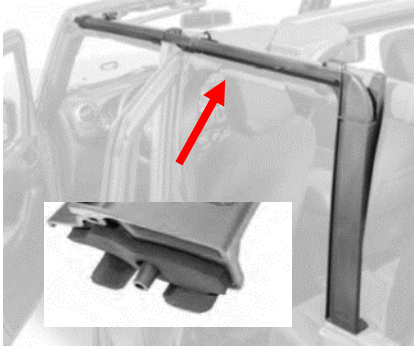


Fig 8



Fig 9



Fig 10



Fig 11



Fig 12

Step 3: Install Front Door Surrounds to Jeep

Locate the driver's side front door surround and line up the rear end with the front of the rear door surround as shown in (Fig 13). Make sure the Door seals are not caught under the door surrounds (See Fig 14) Push the seal between the front and rear door surround together and then, as you did with the rear door surround, push the "C" channel onto the roll bar between the padding (cutout) and line up the holes in the "C" with vertical holes in the roll bar (Fig's 15, 16 & 17). Repeat this procedure on the passenger side.



Fig 13



Fig 14

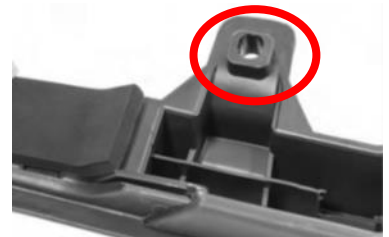


Fig 15



Fig 16



Fig 17

INSTALLATION PROCEDURE:

Step 4: Secure Front and Rear Door Surrounds to Jeep

Locate the two sets of screw knobs in each Door surround box. There should be (2) sets of three knobs with two the same length and one shorter length. The shorter knob attaches to the center hole on the door surrounds and the (2) longer knobs go on the front and rear holes. Line up the door surround "C" attachment holes with the vertical holes in the roll bar. Slip the front knob through the hole in the front door surround (Fig 18). Tighten the knob securing the front door surround. Repeat this procedure on the back of the rear door surround but do not tighten this or the short center knob all the way. Finally, with the short knob, secure the "sandwiched" front & rear door surrounds with the short knob (Fig's 19 & 20). All knobs on both sides of the vehicle should be secured to the roll bar. This completes the installation of the door surrounds to your vehicle (Fig 21).



Fig 18



Fig 19



Fig 20



Fig 21

Step 5: Attach Quick Release Knobs to Over Door Bows

Locate the two Quick release knobs and the header/Deck Assembly shown in (Fig 22). You will be installing one Quick release knob into each of the over door bow ends. Line up the quick release knob in the bow end making sure the knob portion is facing inward and the slot on the Quick Release knob is vertical, up and down (Fig 23).

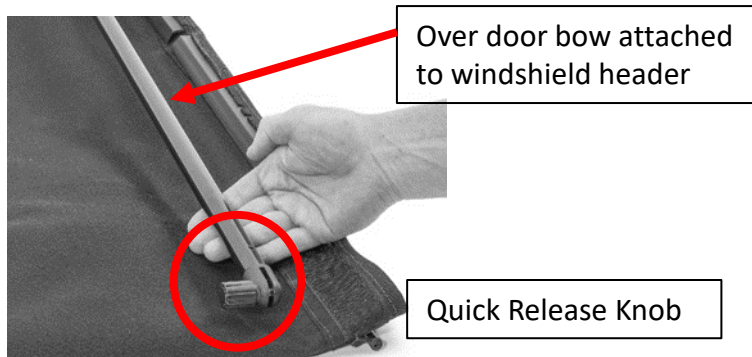


Fig 22

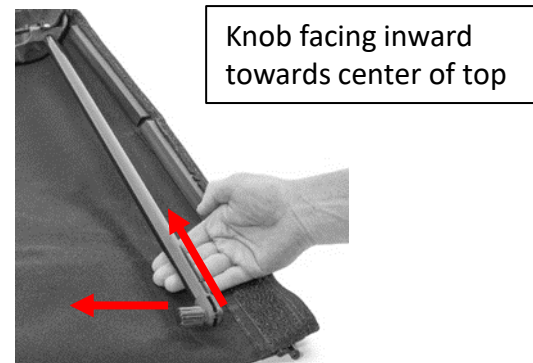


Fig 23

Using a Phillips head screwdriver and the enclosed set screws, secure the Quick Release knob to the bow end through the pre-drilled hole in the bow (Fig's 24 & 25). (NOTE: If you cannot get the hole started in the Quick release knob, you may have to drill a small pilot hole). Tighten the screw securing the Quick Release knob to the bow. Repeat on the other side and set this assembly aside.

Important Note:

This next step is easier and safer if you have a friend helping you. Having a person on the other side of the vehicle to help lift and locate the front header assembly and Top Deck will be very helpful.

INSTALLATION PROCEDURE:

Step 5 Continued: Attach Quick Release Knobs to Over Door Bows



Fig 24

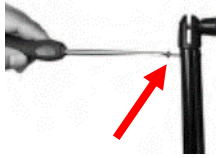


Fig 25

Step 6: Installing the Rear Bow

Locate the rear bow as called out in in (Fig 26). This bow is curved at the end and has a flat bracket welded onto each end as shown in (Fig 27). This bow mounts to the factory mounting point (bolt) on the rear of the roll bar under the Roll Bar padding and just behind the rear door surround (Fig 28). The rear bow ships from the factory wrapped onto the Soft Top Deck inside a hook and loop pocket. With the help of a friend, you will need to lay the entire top deck assembly onto the vehicle with the front header resting on the windshield and the rear bow (Wrapped in the hook and loop flap) resting on the rear of the back roll bar legs. Note that the next pictures do not show the fabric attached to the rear bow. This is for reference only. The rear bow should be inside the hook and loop flap during installation.

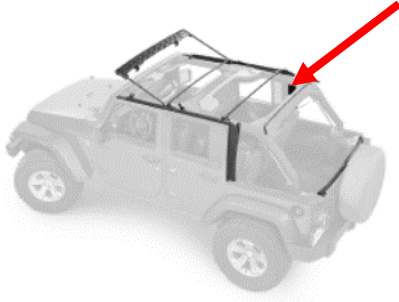


Fig 26

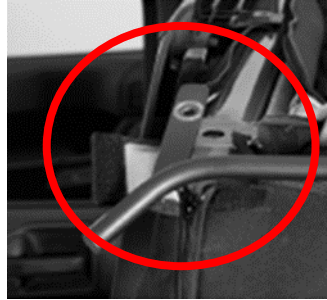


Fig 27



Fig 28

Unzip the roll bar padding towards the rear of the vehicle just past the rear door surround and right after the small Velcro flap. There will be a factory mounted bolt just under this flap. Using a 13mm socket and driver remove this bolt from the roll bar (Fig 29). Once removed, slip the rear bow bracket over the hole and replace the bolt (Fig 30). Repeat this install on the other side of the vehicle so each bolt is loosely installed.

The width of the rear roll bar legs is different on each vehicle. We have slotted the rear bow bracket to compensate for this. When tightening these two rear bolts you must make sure that the slot & bolt location is the same on each side. This will ensure the top and rear bow is centered on the vehicle. For Example: (Fig 31) shows the slot exposed on the inside of the vehicle. The rear bow is too far inboard and not centered. (Fig 32) shows it centered in the slot and more importantly, centered on the roll bar. Once centered as listed above, tighten each bolt.



Fig 29



Fig 30



Fig 31



Fig 32

Installation Procedure

Step 6 Continued: Installing the Rear Bow

Re-install the roll bar padding by zipping it back up. The rear bow bracket should come right out under the Velcro flap (Fig's 33, 34 & 35).



Fig 33



Fig 34



Fig 35

Step 7: Installing the Second Center Bow

Locate the second center bow as called out in (Fig 36). This bow has a small flat bracket welded onto each end as shown in (Fig 37). This bow mounts to the rear Door Surround knob location. Remove the rear door surround Knobs from each side of the vehicle and place the second center bow bracket hole over the door surround hole. **Make sure the bow is rear of the Door Surround Knob.** Line up one side and place the long door surround knob into the hole (Fig 38) securing the center bow (Do not tighten yet). Go to the opposite side of the vehicle and line up the holes and place the knob in the hole. Now tighten each knob securing the bow to the door surround.

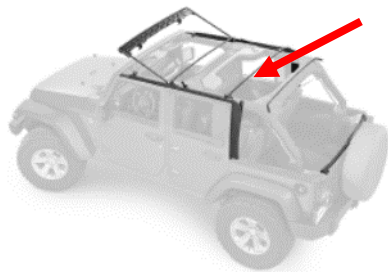


Fig 36



Fig 37



Fig 38

Step 8: Installing the First Center Bow

The first center bow has been permanently installed to the deck assembly with screws. Fold back the Windshield header as shown in (Fig 39) which will expose the bow mount brackets installed on the first bow. The bow ends on the first bow have a multi piece bracket welded to the end of the bow (Fig 40). This center bow attaches to the vehicle using the short door surround knob installed in step 4 above, located in between the front and rear door surround (Fig 41). Remove these door surround Knobs from each side of the vehicle and place the center bow bracket hole over the door surround hole. **The center bow should be towards the rear of the vehicle.** Line up one side and place the short door surround knob into the hole securing the center bow (Do not tighten yet) (Fig 42). Go to the opposite side of the vehicle and line up the holes and place the knob in the hole. Now tighten each knob securing the bow to the door surround (FIG 43). See note below.

NOTE: The oval cutout on the bow bracket must fit into the oval on the door surround. It should be flush when installed and there should be very little if any movement of this bracket once secured with the door surround knobs.

INSTALLATION PROCEDURE:

Step 8 Continued: Installing the First Center Bow

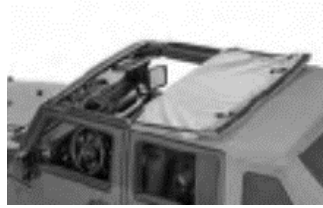
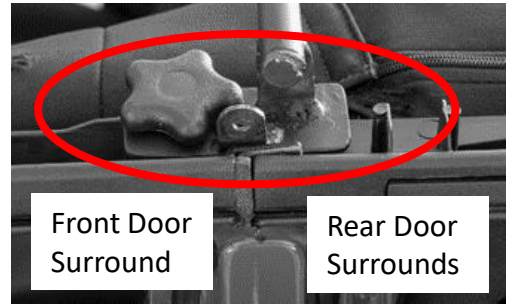


Fig 39



Front Door Surround

Rear Door Surrounds

Fig 40



Fig 41



Fig 42



Fig 43

Step 9: Installing the Front Header Assembly and Top Deck

With the first bow installed to the vehicle and the front windshield header folded back (Fig 44), locate the Quick Release knobs on the ends of the over door bows and slip the knob into the hole in the first bow mount (Fig 45) by pulling the knob out and then releasing. Repeat on the other side. This will secure the back of the header assembly to the vehicle (Fig 46).



Fig 44



Fig 45



Fig 46

Step 10: Installing the Top Deck

With the front header folded back towards the rear of the vehicle and on top of the rear bow (Fig 47), locate the rear spring straps that have a buckle and D-Ring attached to it. The end of this strap has a loop sewn into it. Detach the "looped end" portion of the strap from the buckle. This strap will wrap under the rear seat belt post and back through the loop (Fig's 48, 49 & 50) and then from the inside and around the roll bar back up towards the rear bow leg (Fig 51). As shown in (Fig 52), make sure the strap comes from the inside of the vehicle out and up towards the front of the vehicle and over the rear bow leg. Re-attach the strap end to the buckle/D-Ring assembly.



Fig 47



Fig 48



Fig 49

INSTALLATION PROCEDURE:

Step 10 Continued: Installing the Top Deck



Fig 50



Fig 51

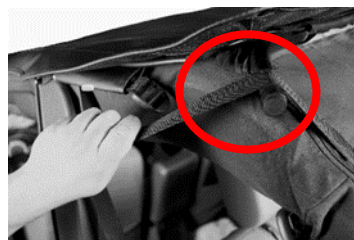


Fig 52

Thread the end of the tensioner through the flap/tube sewn into the top deck and attach the tensioner to the spring assembly that is hanging out of the top deck (Fig 53). Repeat this procedure on the other side of the vehicle. Go to the front of the vehicle and fold the front header down to the windshield (Fig 54) but do not latch. Loosely tighten the rear straps attached to the spring assembly, starting on one side and alternating to the other so the top deck is centered. Make sure the tube/strap is on the outside of the Door Surround and the strap is located over the rear bow leg (Fig 55). When loosely tightening, the cable that is attached to the spring will fit over the rear bow and under the pre-installed screw on the door surround (Fig 56). SEE Note Below!

NOTE: Do not fully tighten these straps until advised to do so at the end of step 11 when the front header is closed and latched on the windshield. If these straps are fully tightened before you fold down the front header you will damage the top!



Fig 53



Fig 54

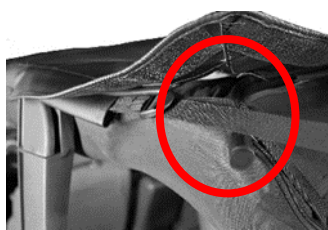


Fig 55



Fig 56

Step 11: Installing the Side and Rear Windows

To ensure the top is centered on the vehicle you will be installing the two quarter windows and the rear window to the top deck and then to each other before securing it to the vehicle body. To make this as easy as possible, the front windshield header should be released (not clamped down) and keep the rear upper corner straps installed in step 10 loosened. This will allow you to line up all window zippers and attachments. The rear corner straps and header will need to be re-tightened/clamped before using the top.

NOTE: Do not fully tighten these straps until advised to do so at the end of step 11 when the front header is closed and latched on the windshield. If these straps are fully tightened before you fold down the front header you will damage the top!

Locate the drivers rear quarter window. Line up and slide the rear quarter window into the "C" Channel as shown in (Fig's 57 & 58). Repeat this on the passenger side of the vehicle.

INSTALLATION PROCEDURE:

Step 11 Continued: Installing the Side and Rear Windows



Fig 59

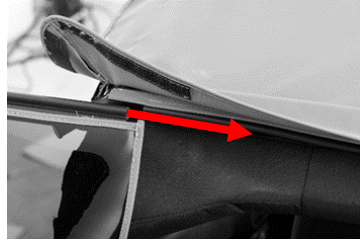


Fig 60



Fig 61



Fig 62

Go inside to the back seat of the vehicle and locate the second center bow hook and loop flap sewn into the top deck. Wrap this flap around the second center bow securing the top deck to the bow (Fig 63). With the front header latched and the second bow flap secured, Loosen the rear corner hook and loop and locate the D-Ring corner straps (Fig's 64 & 65). Tighten the driver's side D- Ring strap then passenger side alternating each side to make sure the top is tightened the same on both sides of the vehicle (Fig 66). Make sure the top is centered on the vehicle while you are tightening.

NOTE: The cable/pocket should be on the outside of the door surround and the strap should be over the rear bow leg (Fig 66). Also make sure the cable located after the spring attachment is secured under the screw on the door surround (see Fig 56 in step 10)



Fig 63



Fig 64



Fig 65



Fig 66

As shown in (Fig's 67 & 68), roll the vertical plastic strip into the door surround slot securing it to the door surround. Next, starting at the driver's side front, attach the side belt rail into the vehicle body by "rolling" the plastic into the slot (Fig 69). Once secure move to the rear driver's side corner and "roll" the plastic into the Jeep body corner belt rail while pulling back towards the rear of the vehicle as shown in (Fig 70). Repeat the quarter window and corner install on the passenger side of the vehicle. You may have to pull the corners around towards the front or back of the vehicle to center the top on the vehicle and to pull the zippers closer.

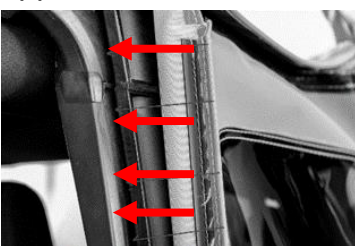


Fig 67



Fig 68



Fig 69



Fig 70

INSTALLATION PROCEDURE:

Step 13: Installing the Rear Window and Tailgate Bar to the Vehicle

Locate the Tailgate Bar and side clips. Clip each side clip to the vehicle with a rolling motion lining up the edge of the clip with the tailgate opening. Orient the "C" Channel on the Tailgate bar with the round seal facing down and slide the "C" Channel onto the rear window retainer as shown in (Fig's 72 & 73). After sliding the retainer all the way through the "C" Channel, roll the tailgate bar into the mounts with the outside of the fabric facing towards the rear of the vehicle. See (Fig's 74 & 75).

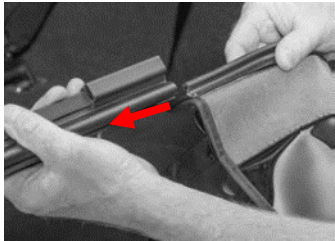


Fig 72



Fig 73



Fig 74



Fig 75

Step 14: Securing the Hook and Loop Fasteners

Once the Tailgate bar is secure, lower zippers on both sides of the rear curtain and then secure the rear corner flaps as shown in (Fig 76). Work your way around the out-side of the vehicle and secure all Hook and loop sealing up the zippers above the windows and down the rear window. (Fig's 77, 78, 79 & 80).



Fig 76

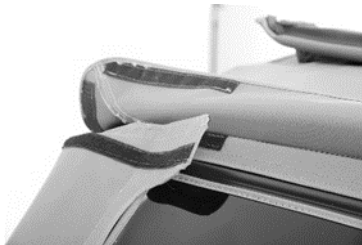


Fig 77



Fig 78



Fig 79



Fig 80

PRODUCT CARE

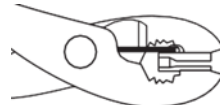
Washing: The fabric should be washed often using soap, warm water and a soft bristle brush. Rinse with clear water to remove all traces of soap. Never Wipe the soft top glass with a dry cloth. Always use a clean, wet soft cloth to clean soft top windows



Normal Slider: Jaws Parallel



Damaged Slider: Jaws Spread



Use pliers to Squeeze back to Parallel

Zippers: Keeping the zipper cleaned and lubricated with a silicone lubricant will help prevent damage and keep the zippers in a smooth working condition. If a zipper opens behind the slider, the slider may have been spread apart. This problem can usually be repaired by using an ordinary pair of pliers to bring the sides back into parallel. Return slider to the end of the zipper in the normal Open position. Squeeze lightly at first and test the zipper. If the zipper continues to remain open squeeze more firm with the pliers and try the zipper again. Repeat this procedure until the zipper operates correctly.

Snaps: Keep snaps cleaned and lubricated with silicone to help prevent snaps from sticking to the studs. If a snap does become stuck to a stud, use a screwdriver and GENTLY pry apart to prevent permanent damage to the snap or the top fabric.