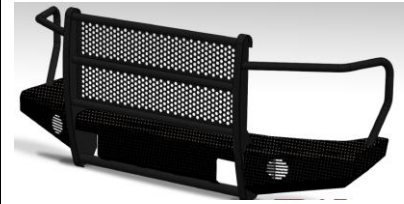




# Replacement Bumper

Part No. FX3014

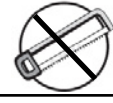


Fits: 2004 - 2013

Nissan Titan HD



60-120 min



Cutting Not Required



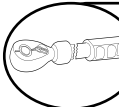
Drilling Not Required



REMOVE CONTENTS FROM BOX. VERIFY ALL PARTS ARE PRESENT.



READ INSTRUCTIONS CAREFULLY BEFORE STARTING INSTALLATION.



DO NOT OVER TORQUE. STANDARD OPERATING LOAD FOR TIGHTEN BODY MOUNT NUTS & BOLTS VARIES FROM 45 TO 65 FOOT POUND.

### PARTS LIST:

Qty	Part Description	Qty	Part Description
1	Replacement Bumper		Hardware Kit

### Tools Required

Standard and Metric Sockets, Wrench and Extensions	12mm ratcheting Wrench
12mm Socket	Phillips Screwdriver
14mm Socket	Floor Jack and wood block
17mm Socket	

### INSTALLATION PROCEDURE:

#### Vehicle Preparation

- Disconnect the fog light harnesses from the fog lights and secure out of harm's way.
- Open hood.
- Using a 12mm socket remove bolts holding the support braces between the frame and the outside sections of the bumper.
- Using a 14mm socket and extension remove the bolt located inside the tow hook area on either side.
- Using a 17mm socket remove the two bolts holding the bumper brackets to the outside of the frame on each side.



- Remove the splash guard by removing the four bolts located in each corner of the guard.
- With the bumper loose and rotated forward and down a little use a 12mm ratcheting wrench to remove the two bolts per side holding the bumper support to the top of the bumper.

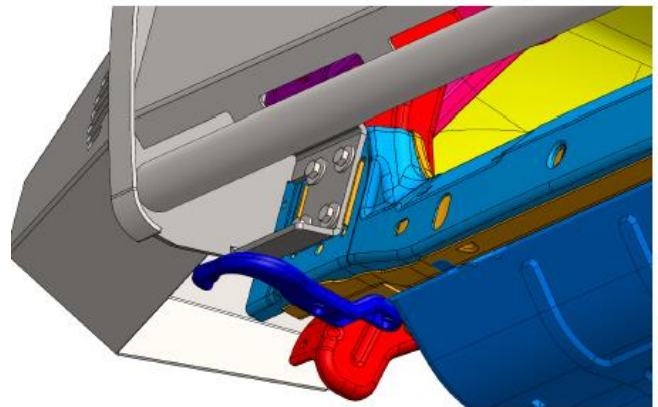
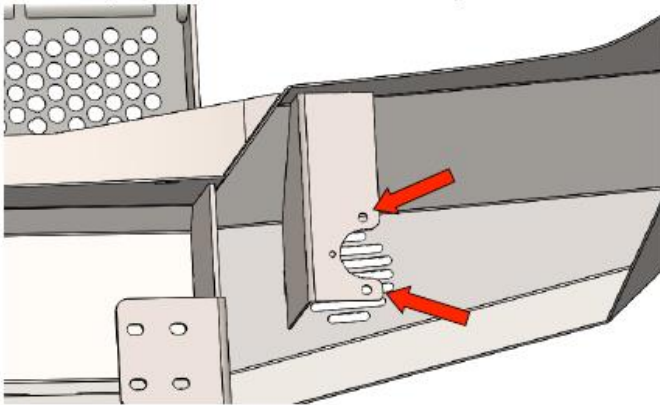


H. With someone holding the OEM bumper in place, remove each bumper support bracket.

#### Remove Bumper from truck.

##### Bumper Installation

1. Remove the bumper from the shipping carton. Lay all items out on a blanket to prevent damage to the powder coating
2. Optional: If you wish to retain the stock fog lamps, remove the lights from the stock bumper and reinstall in the provided brackets behind the protective mesh.
3. Lift bumper and align mounting slots with the OEM bumper mounting holes in the front of the vehicle frame rails.
4. Insert the provided M10 hardware through the slots in the mounting brackets, making sure to use a washer under each bolt head. Do not fully tighten yet.
5. Adjust the bumper to achieve good visual alignment.
6. Tighten all fasteners once alignment is satisfactory.



## PRODUCT CARE

- Periodically check the product to ensure all fasteners are tight and components are intact.
- Regular waxing is recommended to protect the finish of the product.
- **Use ONLY Non-Abrasive automotive wax.** Use of any soap, polish or wax that contains an abrasive is detrimental and can scratch the finish leading to corrosion.
- Aluminum polish may be used to polish small scratches and scuffs for **Stainless Steel finish.**
- Mild soap may be used to clean the product for both **Stainless Steel and Black finish.**

## FAQ's

**1. Hardware's are not of correct size.**

*In GMC / Chevrolet truck model 2006 & up, customer needs to reuse the factory body bolts to install the bracket. If your vehicle is not GMC / Chevrolet 2006 & up, ensure that holes are not partially covered with any plastic grommet or rust? If it is, remove the plastic grommet & rust from the thread holes & re-try the installation.*

**2. Mounting Bracket are not getting Installed properly.**

*In some cases Illustration images shown in Installation manual may not be the exactly same as per actual vehicle images ,also if Driver / Passenger side mounting brackets are very identical in the design, suggest referring Parts Identification guide to avoid fitment issue.*

**3. Products are thumping / rattling after installation.**

*Ensure that all required mounting brackets / hardware's are installed & tighten correctly. Suggest using white lithium / regular grease between the metal to metal contact surfaces.*

**4. Side Bar is not aligning with vehicle / Step Pads are not aligning with vehicle doors.**

*Side bar may be interchanged or mounting brackets are not installed at the correct position in the vehicle. Refer Parts identification guide.*

**5. Missing / Excess Hardware.**

*Recheck hardware count as per the part list.*

**6. Product not installing properly.**

*Ensure make model year, cab length and bed size of your vehicle is listed in the application. All installation steps are followed correctly.*