



Replacement Bumper

Part No. FX3007



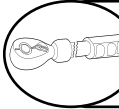
Fits: 2007 - Current Chevrolet 1500



REMOVE CONTENTS FROM BOX. VERIFY ALL PARTS ARE PRESENT.



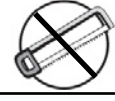
READ INSTRUCTIONS CAREFULLY BEFORE STARTING INSTALLATION.



DO NOT OVER TORQUE. STANDARD OPERATING LOAD FOR TIGHTEN BODY MOUNT NUTS & BOLTS VARIES FROM 45 TO 65 FOOT POUND.



60-120 min



Cutting Not Required



Drilling Not Required

PARTS LIST:

Qty	Part Description	Qty	Part Description
1	Replacement Bumper		

Tools Required

Metric and Standard socket set	Philips head screwdriver
Various socket extensions	Flat head screwdriver
3/4" box end wrench	"Christmas tree" clip remover

INSTALLATION PROCEDURE:

Vehicle Preparation

1. Disconnect factory fog lamp connectors (if applicable), zip tie harness to frame.
2. Using a 15mm socket remove bolts (2 per side) and swing outer bumper support tubes down and out of the way.

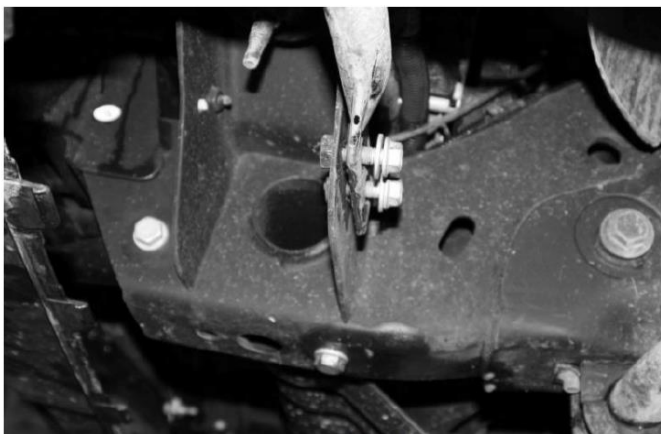


Figure 2

3. Remove the dart clips holding the rubber valence between the frame and the bumper.
4. Remove 21mm nuts (2 per side) from the bolt strips holding the bumper brackets to the frame.

NOTE: SUPPORT BUMPER BEFORE REMOVING BOLT STRIPS!

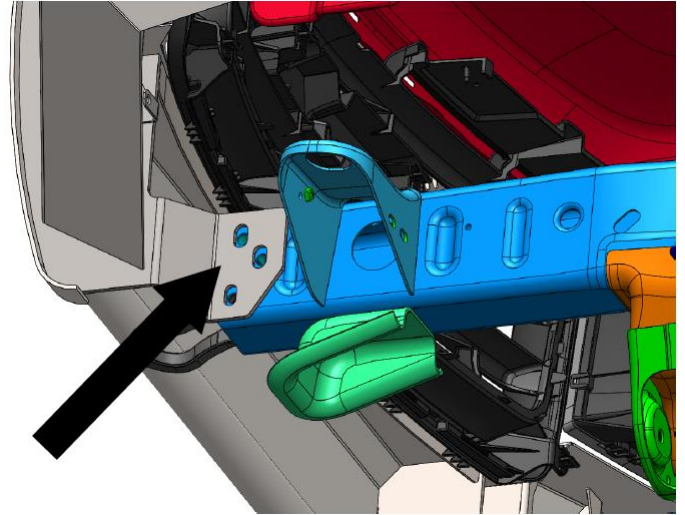
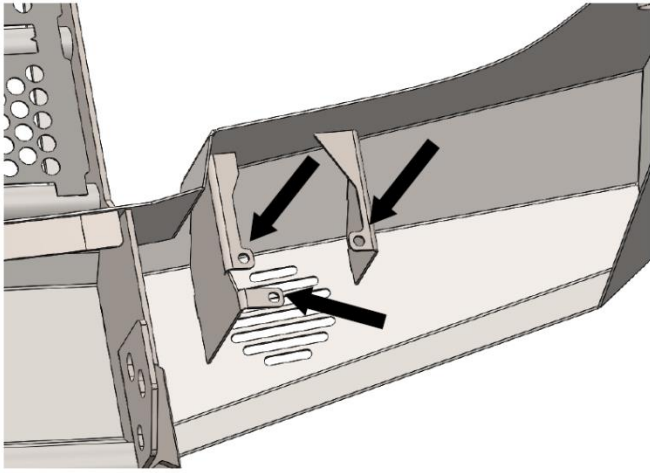


5. With the bumper supported, remove the bolt strips holding the bumper to the frame.
6. Pull outward slightly at the fender wells and remove the bumper from the front of the vehicle.
7. With the bumper removed from the truck, remove the 18mm bolts attaching the factory tow hooks to the frame. Remove the tow hooks.



Bumper Installation

1. If equipped, remove the fog light and mounting brackets from the OEM bumper. Remove the adjuster screw and spring; save for reinstallation.
2. If equipped, reinstall the OEM fog light into the brackets in the TrailFX front bumper. Use the OEM adjuster screw and spring to set the position of the beam.



3. Using a lifting device or the assistance of helpers, lift the TrailFX bumper onto the vehicle, lining the holes in the mounting flanges up with the holes in the frame rails.
4. Use the OEM hardware removed in previous steps to mount the bumper to the frame rails. Be sure to reinstall the factory tow hooks at the same time.
5. Adjust the bumper until satisfactory alignment is achieved, then fully tighten all fasteners.
6. If equipped, reconnect the fog light wiring harness and check fog light aim.

Maintenance/Care

- Periodically check and tighten all nuts.
- Stripped, fractured, or bent bolts or nuts need to be replaced.

PRODUCT CARE

- Periodically check the product to ensure all fasteners are tight and components are intact.
- Regular waxing is recommended to protect the finish of the product.
- **Use ONLY Non-Abrasive automotive wax.** Use of any soap, polish or wax that contains an abrasive is detrimental and can scratch the finish leading to corrosion.
- Aluminum polish may be used to polish small scratches and scuffs for **Stainless Steel finish.**
- Mild soap may be used to clean the product for both **Stainless Steel and Black finish.**

FAQ's

1. Hardware's are not of correct size.

In GMC / Chevrolet truck model 2006 & up, customer needs to reuse the factory body bolts to install the bracket. If your vehicle is not GMC / Chevrolet 2006 & up, ensure that holes are not partially covered with any plastic grommet or rust? If it is, remove the plastic grommet & rust from the thread holes & re-try the installation.

2. Mounting Bracket are not getting Installed properly.

In some cases Illustration images shown in Installation manual may not be the exactly same as per actual vehicle images ,also if Driver / Passenger side mounting brackets are very identical in the design, suggest referring Parts Identification guide to avoid fitment issue.

3. Products are thumping / rattling after installation.

Ensure that all required mounting brackets / hardware's are installed & tighten correctly. Suggest using white lithium / regular grease between the metal to metal contact surfaces.

4. Side Bar is not aligning with vehicle / Step Pads are not aligning with vehicle doors.

Side bar may be interchanged or mounting brackets are not installed at the correct position in the vehicle. Refer Parts identification guide.

5. Missing / Excess Hardware.

Recheck hardware count as per the part list.

6. Product not installing properly.

Ensure make model year, cab length and bed size of your vehicle is listed in the application. All installation steps are followed correctly.