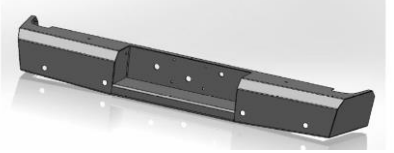




Replacement Bumper

Part No. FX1011

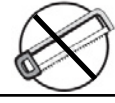


Fits: 2007 - 2013

Toyota Tundra



60-120 min



Cutting Not Required



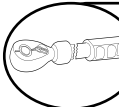
Drilling Not Required



REMOVE CONTENTS FROM BOX. VERIFY ALL PARTS ARE PRESENT.



READ INSTRUCTIONS CAREFULLY BEFORE STARTING INSTALLATION.



DO NOT OVER TORQUE. STANDARD OPERATING LOAD FOR TIGHTEN BODY MOUNT NUTS & BOLTS VARIES FROM 45 TO 65 FOOT POUND.

PARTS LIST:

Qty	Part Description	Qty	Part Description
1	Replacement Bumper	1	Stud Plates
1	Hardware Kit	1	Brackets
1	Tag Light & Wiring		

Tools Required

Socket Wrench with Extension	3/4", 15mm, 18mm, & 22mm Box End Wrench
3/8" 3/4", 15mm, 18mm, & 22mm Sockets	5/32" Allen Key
Flat Head Screw Driver	

INSTALLATION PROCEDURE:

Removal of Stock Bumper

- Using a Phillip's head screwdriver remove the license plate lights from each side of the OEM bumper. Disconnect the harness on the back side of the light to remove fully. Secure the harness out of harm's way to the frame.
- Remove your license plate from the OEM Bumper.
- Remove the plastic corner pieces from the top of the OEM bumper by pulling up from the outside edge. If the plastic is being stubborn during removal the plastic clips can be popped loose from the bottom side of the bumper. See image below.



4. Remove the Phillips head screw passing through the plastic that was hidden by the license plate previously. See image below.
5. Pop the plastic clips loose on the bottom side of the main piece of plastic on the top side of the bumper allowing access to the OEM fasteners.
6. Using a 12mm wrench remove the eight OEM fasteners holding the OEM bumper shell to the receiver hitch.
7. Remove the OEM bumper and set aside.
8. Your truck is now ready for the installation of your new rear bumper.



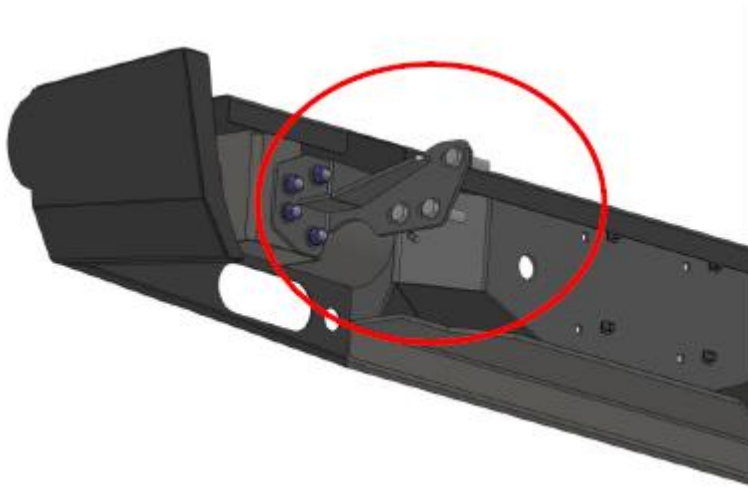
9. Pop the plastic clips loose on the bottom side of the main piece of plastic on the top side of the bumper allowing access to the OEM fasteners.
10. Using a 12mm wrench remove the eight OEM fasteners holding the OEM bumper shell to the receiver hitch.
11. Remove the OEM bumper and set aside.
12. Your truck is now ready for the installation of your new rear bumper.

REAR BUMPER INSTALLATION

1. Remove the bumper from the shipping carton. Lay all items out on a blanket to prevent damage to the powder coating.
2. Using a 19mm socket and wrench to remove the three bolts from each side of the hitch frame plate.
3. Using the OE Hardware install the supplied intermediate mounting brackets to the hitch frame plate. Stud plates should be inserted into mounts as shown before mounting brackets. Complete on both driver and passenger sides of vehicle. Do Not Fully Tighten, Finger Tighten Only. See Image Below.
4. With the help of two friends and possibly a floor jack to help support the center of the bumper lift the Trail FX rear bumper into place.
5. With the bumper held into place insert the supplied ½" fasteners through the bumper and into the bumper brackets placing the nuts on the front side of the frame mount. Do not fully tighten. See image below.



6. Align the bumper side to side and top to bottom to ensure a perfect fit to the truck. Allow for a 0.5" clearance to all painted surfaces if possible to allow for frame flex.
7. Check that the tailgate does not interfere with the bumper by opening it very carefully and lowering it into place. If tailgate is too close to the bumper, adjust bumper lower.
8. Fully tighten all fasteners between bumper and brackets and brackets and frame.
9. Install the supplied license plate light by inserting it into the round hole. Tap into OEM wiring.
10. Install supplied license plate plastic nut inserts and license plate.



PRODUCT CARE

- Periodically check the product to ensure all fasteners are tight and components are intact.
- Regular waxing is recommended to protect the finish of the product.
- **Use ONLY Non-Abrasive automotive wax.** Use of any soap, polish or wax that contains an abrasive is detrimental and can scratch the finish leading to corrosion.
- Aluminum polish may be used to polish small scratches and scuffs for **Stainless Steel finish.**
- Mild soap may be used to clean the product for both **Stainless Steel and Black finish.**

FAQ's

1. Hardware's are not of correct size.

In GMC / Chevrolet truck model 2006 & up, customer needs to reuse the factory body bolts to install the bracket. If your vehicle is not GMC / Chevrolet 2006 & up, ensure that holes are not partially covered with any plastic grommet or rust? If it is, remove the plastic grommet & rust from the thread holes & re-try the installation.

2. Mounting Bracket are not getting Installed properly.

In some cases Illustration images shown in Installation manual may not be the exactly same as per actual vehicle images ,also if Driver / Passenger side mounting brackets are very identical in the design, suggest referring Parts Identification guide to avoid fitment issue.

3. Products are thumping / rattling after installation.

Ensure that all required mounting brackets / hardware's are installed & tighten correctly. Suggest using white lithium / regular grease between the metal to metal contact surfaces.

4. Side Bar is not aligning with vehicle / Step Pads are not aligning with vehicle doors.

Side bar may be interchanged or mounting brackets are not installed at the correct position in the vehicle. Refer Parts identification guide.

5. Missing / Excess Hardware.

Recheck hardware count as per the part list.

6. Product not installing properly.

Ensure make model year, cab length and bed size of your vehicle is listed in the application. All installation steps are followed correctly.