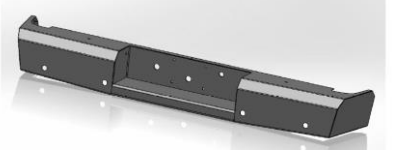




Replacement Bumper

Part No. FX1006

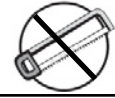


Fits: 2003 - 2009

Ram HD 2500 / 3500



60-120 min



Cutting Not Required



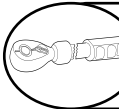
Drilling Required



REMOVE CONTENTS FROM BOX. VERIFY ALL PARTS ARE PRESENT.



READ INSTRUCTIONS CAREFULLY BEFORE STARTING INSTALLATION.



DO NOT OVER TORQUE. STANDARD OPERATING LOAD FOR TIGHTEN BODY MOUNT NUTS & BOLTS VARIES FROM 45 TO 65 FOOT POUND.

PARTS LIST:

Qty	Part Description	Qty	Part Description
1	Replacement Bumper	1	Hardware Kit
1	Tag Light	1	Tag Light Wiring
1	Spacers		

Tools Required

Socket Wrench with Extension	T-25 Torx Driver
3/4", 15mm, & 21mm Sockets	Drill and 1/4" Drill Bit
3/4" Box End Wrench	Flat Head Screw Driver

INSTALLATION PROCEDURE:

Vehicle Preparation

1. Remove license plate (to reveal two mounting bolts).
2. Remove the (4) Torx screws from the trailer plug, pull plug through bumper, slide red tab toward wires and remove trailer plug.
3. Remove license plate light plugs by sliding red tab toward wires and pressing down on tab.
4. Locate and remove (2) bolts above frame rails using 15mm socket.
5. Pull Christmas tree clips (holding wire harness) from each frame rail in order to clear tab nut.
6. Remove (8) stock fasteners from frame rails using 15mm and 21mm sockets (4 on each side).



Figure 1 - Fastener Locations

Bumper Installation

1. Replace OEM bumper with the Trail FX rear bumper assembly. Use the OEM screws and nut plates to fasten the bumper to the frame/hitch assembly. Do not fully tighten.
2. Only use provided spacers if necessary to offset the bottom of the bumper from the hitch mounting flange. Fasten with the provided 9/16" screws, washers, lock washers, and nuts. Do not fully tighten.
3. Level and align the bumper in relation to the truck bed. Fully tighten all fasteners.
4. Slowly lower the tailgate to ensure there will be no interference. If required, loosen the frame bolts / hitch bolts and adjust alignment of the bumper.
5. Install tag light into the 1 ¼" hole provided in the center section. The powder coating may need to be removed from the hole for proper grounding. Connect wire into the hot wire of OEM tag light circuit. Verify operation.
6. Reinstall the trailer plug receptacle with the OEM fasteners. Reconnect the plug harness.
7. Reinstall license plate with provided plastic inserts.
8. Install grommets into sensor holes. If equipped, insert sensors from the back side. If not equipped, install provided plugs into the grommets.
9. Insert light grommets into oval cut-outs and press lights in from the front. Wire as desired.
10. Secure all loose wiring and harnesses to the frame or bumper with zip ties.

PRODUCT CARE

- Periodically check the product to ensure all fasteners are tight and components are intact.
- Regular waxing is recommended to protect the finish of the product.
- **Use ONLY Non-Abrasive automotive wax.** Use of any soap, polish or wax that contains an abrasive is detrimental and can scratch the finish leading to corrosion.
- Aluminum polish may be used to polish small scratches and scuffs for **Stainless Steel finish.**
- Mild soap may be used to clean the product for both **Stainless Steel and Black finish.**

FAQ's

1. Hardware's are not of correct size.

In GMC / Chevrolet truck model 2006 & up, customer needs to reuse the factory body bolts to install the bracket. If your vehicle is not GMC / Chevrolet 2006 & up, ensure that holes are not partially covered with any plastic grommet or rust? If it is, remove the plastic grommet & rust from the thread holes & re-try the installation.

2. Mounting Bracket are not getting Installed properly.

In some cases Illustration images shown in Installation manual may not be the exactly same as per actual vehicle images ,also if Driver / Passenger side mounting brackets are very identical in the design, suggest referring Parts Identification guide to avoid fitment issue.

3. Products are thumping / rattling after installation.

Ensure that all required mounting brackets / hardware's are installed & tighten correctly. Suggest using white lithium / regular grease between the metal to metal contact surfaces.

4. Side Bar is not aligning with vehicle / Step Pads are not aligning with vehicle doors.

Side bar may be interchanged or mounting brackets are not installed at the correct position in the vehicle. Refer Parts identification guide.

5. Missing / Excess Hardware.

Recheck hardware count as per the part list.

6. Product not installing properly.

Ensure make model year, cab length and bed size of your vehicle is listed in the application. All installation steps are followed correctly.