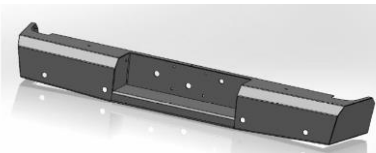




# Replacement Bumper

Part No. FX1005



Fits: 2010 - 2014

Dodge Ram HD



60-120 min

Cutting Not Required

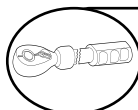
Drilling Required



REMOVE CONTENTS FROM BOX. VERIFY ALL PARTS ARE PRESENT.



READ INSTRUCTIONS CAREFULLY BEFORE STARTING INSTALLATION.



DO NOT OVER TORQUE. STANDARD OPERATING LOAD FOR TIGHTEN BODY MOUNT NUTS & BOLTS VARIES FROM 45 TO 65 FOOT POUND.

### PARTS LIST:

Qty	Part Description	Qty	Part Description
1	Replacement Bumper	1	Hardware Kit
1	Tag Light	1	Tag Light Wiring

### Tools Required

3/4" Wrench and Socket	3/32" Allen Wrench
10mm socket	#16 drill bit (.1770")
9mm Socket	Flat Head Screwdriver
T10 Torx Bit	Phillips Screwdriver
Floor jack and wood block	

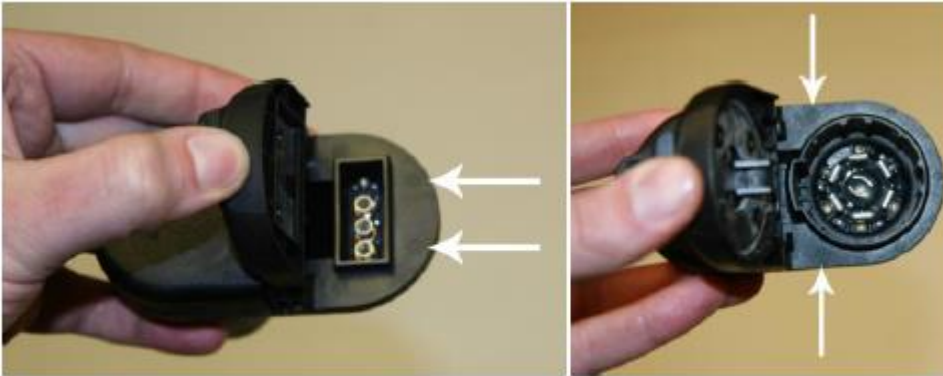
### INSTALLATION PROCEDURE:

#### Vehicle Preparation

1. Disconnect the trailer and back-up sensor harnesses (if applicable) from the bumper.
2. Unplug the OEM license plate light from the housing and secure to the vehicle.
3. Remove license plate (to reveal two mounting bolts).
4. Remove the two mounting bolts exposed by the license plate.
5. Remove the two bolts per side holding the bumper to the frame/hitch assembly.
6. Remove the OEM bumper by rotating backwards. The top must clear the boss located on the hitch under the plastic cover.
7. Remove the clips holding the trailer hitch plug from the bumper. This plug will be modified to fit the new bumper.

## Bumper Installation

1. Replace the OEM bumper with the Trail FX bumper assembly. Use the six provided  $\frac{1}{2}$ " x 1.5" bolts to fasten the bumper to the hitch/frame brackets. Use the two provided  $\frac{1}{2}$ " x 2.0" bolts to fasten the bumper to the hitch near the receiver. Verify that the bumper is level side to side before tightening.
2. Slowly lower the tailgate to ensure there will be no interference. If required, loosen the frame bolts / hitch bolts and adjust alignment of the bumper.
3. Install the tag light into the  $1\frac{1}{4}$ " hole in the center section. The powder coating may need to be removed from the hole for proper grounding. Connect the light to the hot wire of the OEM tag light circuit. Verify operation.
4. Install license plate inserts in 4 provided locations.
5. Drill The OEM Trailer Hitch Plug using a #16 Dill Bit (.177") in the locations pointed out with arrows below. Use care to drill directly in the center of the circles in the plastic.
6. Install the trailer plug into the cutout in the new bumper using the #8 supplied hardware. Reconnect the trailer plug harness.
7. Reinstall the license plate using the plastic inserts provided.
8. Install grommets into sensor holes. If equipped, insert the sensors from the back side. If not equipped, install provided plugs into the grommets.
9. Insert light grommets into oval cut-outs and press lights in from the front. Wire as desired.
10. Secure all loose wiring and harnesses to the frame or bumper with zip ties.



**Figure 1 - Drilling locations**

## PRODUCT CARE

- Periodically check the product to ensure all fasteners are tight and components are intact.
- Regular waxing is recommended to protect the finish of the product.
- **Use ONLY Non-Abrasive automotive wax.** Use of any soap, polish or wax that contains an abrasive is detrimental and can scratch the finish leading to corrosion.
- Aluminum polish may be used to polish small scratches and scuffs for **Stainless Steel finish.**
- Mild soap may be used to clean the product for both **Stainless Steel and Black finish.**

## FAQ's

**1. Hardware's are not of correct size.**

*In GMC / Chevrolet truck model 2006 & up, customer needs to reuse the factory body bolts to install the bracket. If your vehicle is not GMC / Chevrolet 2006 & up, ensure that holes are not partially covered with any plastic grommet or rust? If it is, remove the plastic grommet & rust from the thread holes & re-try the installation.*

**2. Mounting Bracket are not getting Installed properly.**

*In some cases Illustration images shown in Installation manual may not be the exactly same as per actual vehicle images ,also if Driver / Passenger side mounting brackets are very identical in the design, suggest referring Parts Identification guide to avoid fitment issue.*

**3. Products are thumping / rattling after installation.**

*Ensure that all required mounting brackets / hardware's are installed & tighten correctly. Suggest using white lithium / regular grease between the metal to metal contact surfaces.*

**4. Side Bar is not aligning with vehicle / Step Pads are not aligning with vehicle doors.**

*Side bar may be interchanged or mounting brackets are not installed at the correct position in the vehicle. Refer Parts identification guide.*

**5. Missing / Excess Hardware.**

*Recheck hardware count as per the part list.*

**6. Product not installing properly.**

*Ensure make model year, cab length and bed size of your vehicle is listed in the application. All installation steps are followed correctly.*