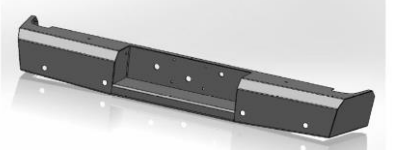




Replacement Bumper

Part No. FX1000

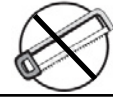


Fits: 1999 - Current

Ford Superduty



60-120 min



Cutting Not Required



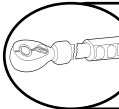
Drilling Not Required



REMOVE CONTENTS FROM BOX. VERIFY ALL PARTS ARE PRESENT.



READ INSTRUCTIONS CAREFULLY BEFORE STARTING INSTALLATION.



DO NOT OVER TORQUE. STANDARD OPERATING LOAD FOR TIGHTEN BODY MOUNT NUTS & BOLTS VARIES FROM 45 TO 65 FOOT POUND.

PARTS LIST:

Qty	Part Description	Qty	Part Description
1	Replacement Bumper	1	Hardware Kit
1	Tag Light	1	Tag Light Wiring
1	Sensor Cutout Plugs		

Tools Required

Socket/Ratchet wrench with Extensions	3/32" Hex Socket
10mm Socket	3/4" Socket
12mm Socket	12mm, 11/32", 3/4" Box End Wrench
19mm Socket	Phillips Screwdriver
Floor jack & wood block	

INSTALLATION PROCEDURE:

Vehicle Preparation

1. Remove license plate and OEM license plate lights. Disconnect trailer receptacle. If equipped, unplug back-up sensor harness.
2. With the bumper supported, remove the four OEM bolts (two per side) shown in Figure 1. Save factory hardware for reuse.

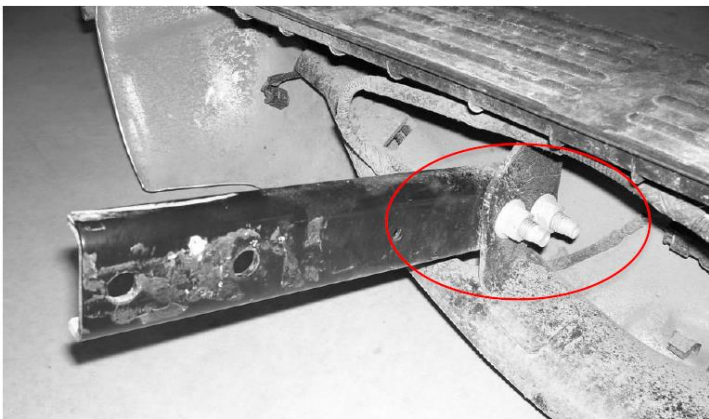


Figure 1

3. Your truck is now ready for the installation of your new Trail FX Rear Bumper!

Bumper Installation

1. Remove the bumper from the shipping carton. Lay all items out on a blanket to prevent damage to the powder coating.
2. Install license plate inserts, back-up sensor grommets with plugs, and tag light (Ref. Figure 2a,b,c,d).

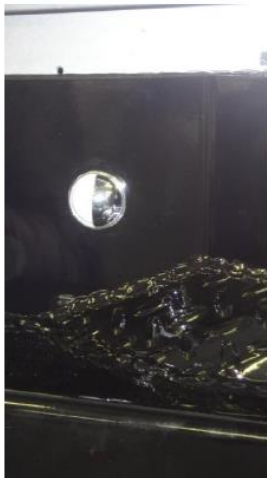


Figure 2a



Figure 2b

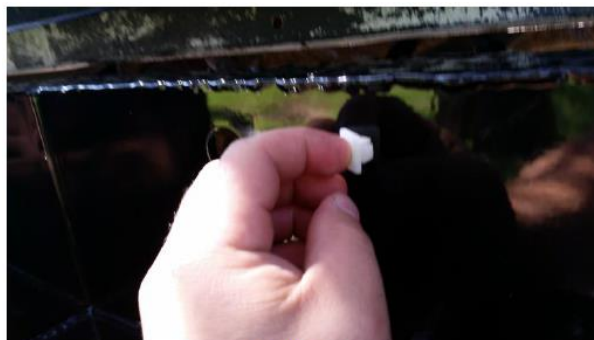


Figure 2d



Figure 2c



Figure 8

3. Disconnect the factory harness from the OEM bumper. Attach wiring to lights, sensors (if available), and trailer plug. Use zip-ties to secure excess wiring. Do not connect until Trail FX bumper is installed.
4. With the help of two friends, slide the Trail FX bumper into the hitch frame plate using 19mm socket and wrench and fasteners supplied in hardware kit. Complete on both driver and passenger sides of vehicle. Do not fully tighten. Leave as much play as possible until bumper is properly positioned. See image below.
5. Align the bumper side to side and top to bottom to ensure a perfect fit to the truck.
6. Check that the tailgate does not interfere with the bumper by opening it very carefully and lowering it into place. If tailgate is too close to the bumper, adjust bumper lower.
7. Fully tighten all fasteners between bumper and brackets and brackets and frame.
8. Install supplied license plate plastic nut inserts and license plate.

PRODUCT CARE

- Periodically check the product to ensure all fasteners are tight and components are intact.
- Regular waxing is recommended to protect the finish of the product.
- **Use ONLY Non-Abrasive automotive wax.** Use of any soap, polish or wax that contains an abrasive is detrimental and can scratch the finish leading to corrosion.
- Aluminum polish may be used to polish small scratches and scuffs for **Stainless Steel finish.**
- Mild soap may be used to clean the product for both **Stainless Steel and Black finish.**

FAQ's

1. Hardware's are not of correct size.

In GMC / Chevrolet truck model 2006 & up, customer needs to reuse the factory body bolts to install the bracket. If your vehicle is not GMC / Chevrolet 2006 & up, ensure that holes are not partially covered with any plastic grommet or rust? If it is, remove the plastic grommet & rust from the thread holes & re-try the installation.

2. Mounting Bracket are not getting Installed properly.

In some cases Illustration images shown in Installation manual may not be the exactly same as per actual vehicle images ,also if Driver / Passenger side mounting brackets are very identical in the design, suggest referring Parts Identification guide to avoid fitment issue.

3. Products are thumping / rattling after installation.

Ensure that all required mounting brackets / hardware's are installed & tighten correctly. Suggest using white lithium / regular grease between the metal to metal contact surfaces.

4. Side Bar is not aligning with vehicle / Step Pads are not aligning with vehicle doors.

Side bar may be interchanged or mounting brackets are not installed at the correct position in the vehicle. Refer Parts identification guide.

5. Missing / Excess Hardware.

Recheck hardware count as per the part list.

6. Product not installing properly.

Ensure make model year, cab length and bed size of your vehicle is listed in the application. All installation steps are followed correctly.