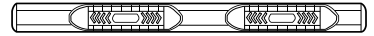




# 4" Oval Nerf Bar

Part No. A1513S/B



Fits: 2004-2006

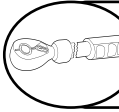
Toyota Tundra Double Cab



REMOVE CONTENTS FROM BOX. VERIFY ALL PARTS ARE PRESENT.



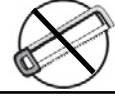
READ INSTRUCTIONS CAREFULLY BEFORE STARTING INSTALLATION.



DO NOT OVER TORQUE. STANDARD OPERATING LOAD FOR TIGHTEN BODY MOUNT NUTS & BOLTS VARIES FROM 45 TO 65 FOOT POUND.



60-180 min



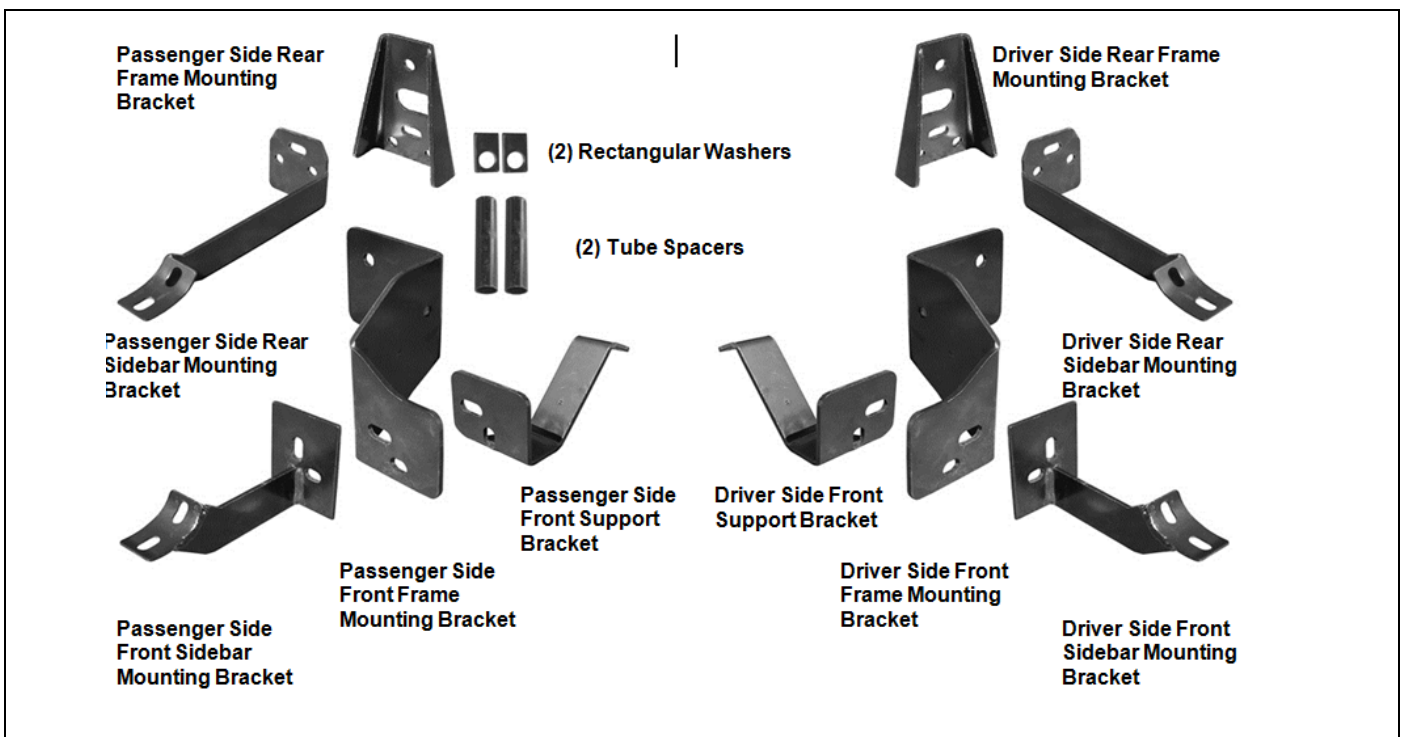
Cutting Not Required



Drilling Not Required

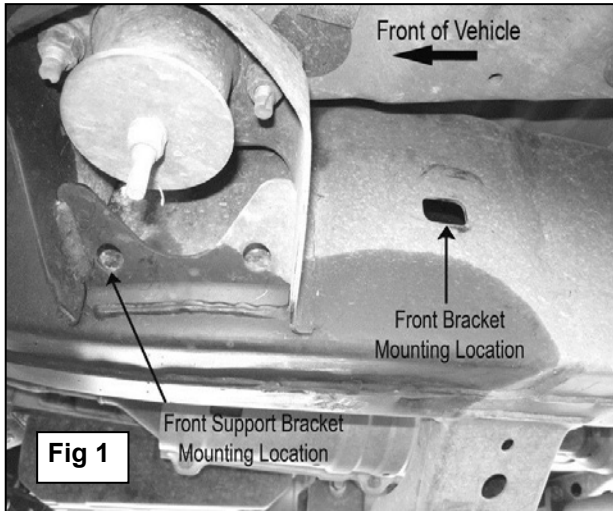
## PARTS LIST:

Qty	Part Description	Qty	Part Description
1	Driver/Left Front Frame Mounting Bracket	2	Rectangular Washers
1	Passenger/Right Front Frame Mounting Bracket	2	12-1.75mm x 140mm Hex Bolts
1	Driver/Left Front Support Bracket	8	12-1.75mm x 40mm Hex Head Bolts
1	Passenger/Right Front Support Bracket	8	12mm ID x 32mm OD x 3mm Flat Washers
1	Driver/Left Front Sidebar Mounting Bracket	12	12mm ID x 24mm OD x 2.5mm Flat Washers
1	Passenger/Right Front Sidebar Mounting Bracket	10	12mm Lock Washers
1	Driver/Left Rear Frame Mounting Bracket	10	12mm Hex Nuts
1	Passenger/Right Rear Frame Mounting Bracket	14	10-1.50mm x 30mm Hex Bolts
1	Driver/Left Rear Sidebar Mounting Bracket	20	10mm ID x 20mm OD x 2mm Flat Washers
1	Passenger/Right Rear Sidebar Mounting Bracket	14	10mm Lock Washers
2	Tube Spacers (19mm x 95mm)	6	10mm Hex Nuts

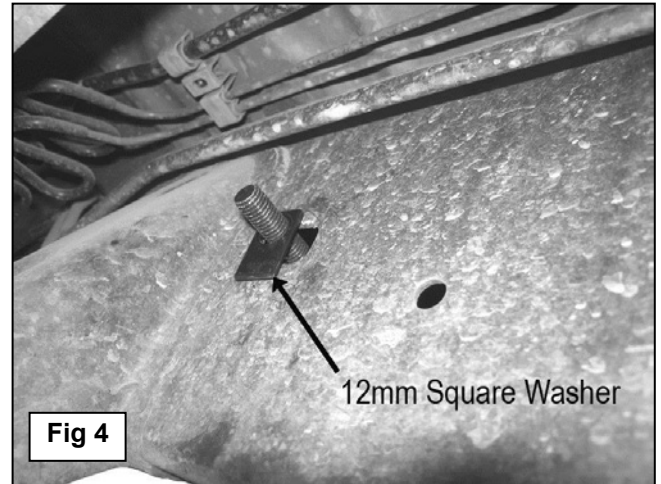
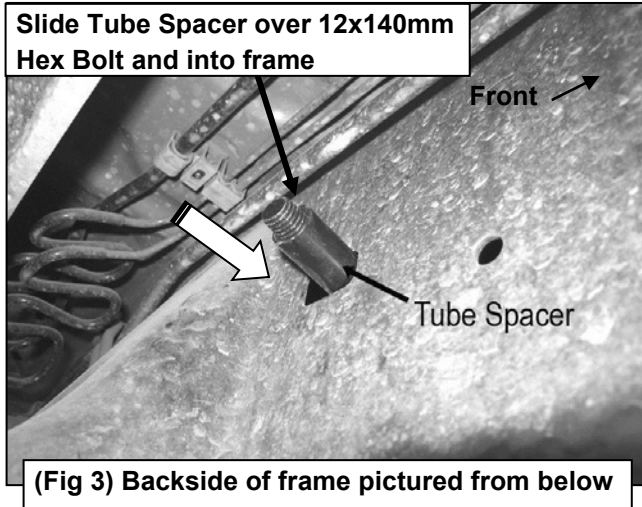
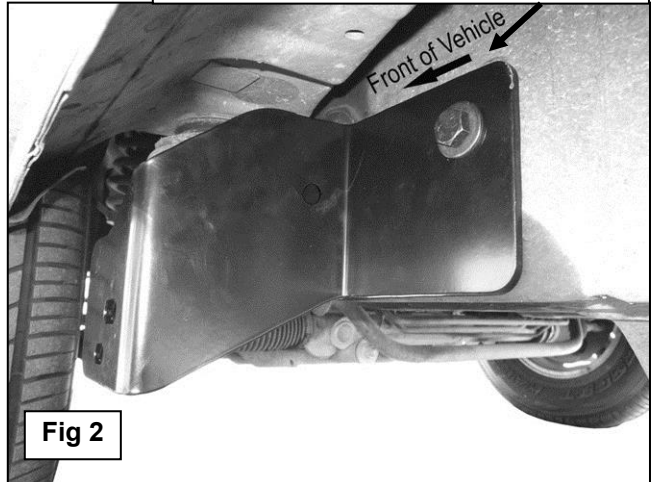


## INSTALLATION PROCEDURE

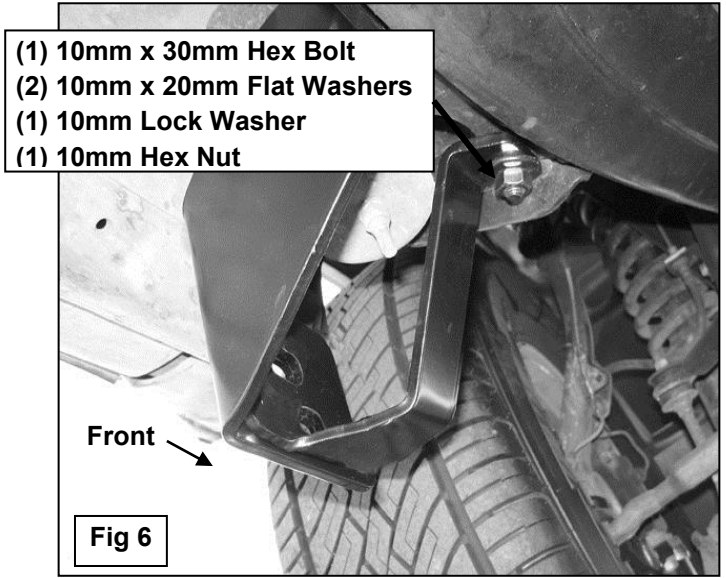
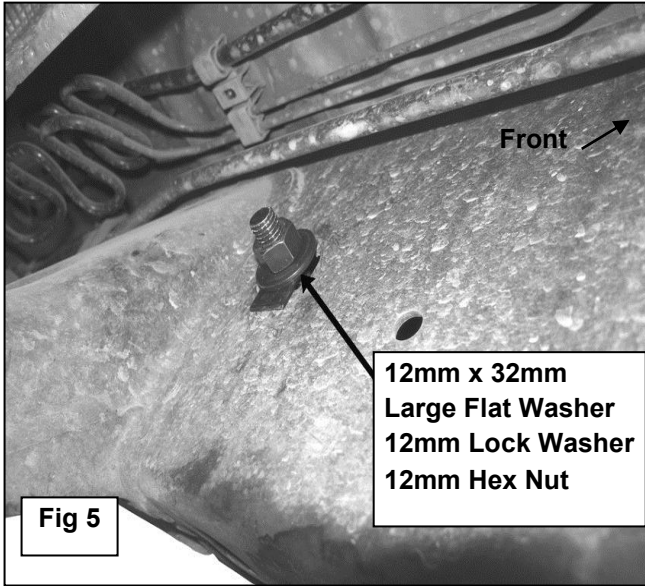
1. Start installation at the front, driver side of the vehicle. Locate the rectangular factory hole in the frame near the front body mount, **(Figure 1)**. Select the driver side front Frame Mounting Bracket and hold it up to the frame. Line up the hole in the Bracket with factory rectangular hole in the frame. Insert (1) 12mm x 140mm Hex Head Bolt with (1) 12mm Flat Washer through Mounting Bracket and frame, **(Figure 2)**. From the back of the frame, slide (1) Tube Spacer over the 12mm x 140mm Hex Bolt and push it into the frame, **(Figure 3)**. Slide (1) Square Washer over the Hex Bolt and Spacer to cover the square hole in the frame, **(Figure 4)**, followed by (1) 12mm Flat Washer, (1) 12mm Lock Washer, and (1) 12mm Hex Nut, **(Figure 5)**. Snug but do not tighten at this time.



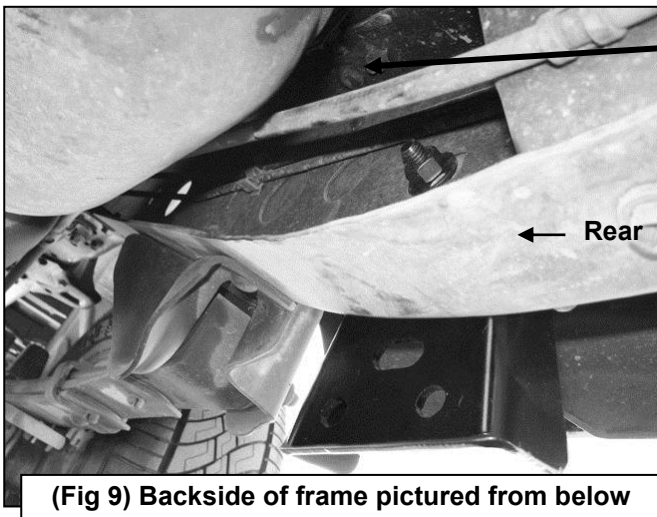
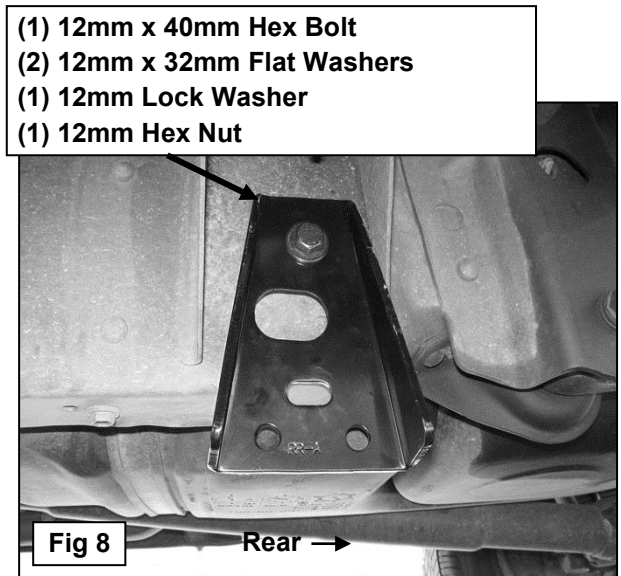
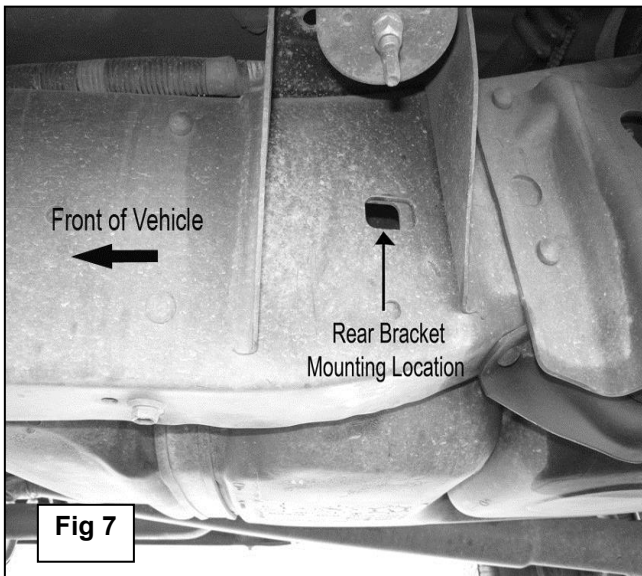
(1) 12mm x 140mm Hex Bolt  
(1) 12mm x 32mm Large Flat Washer



2. Locate the two holes in the bottom of the factory body mount bracket, **(Figure 1)**. Hang the driver side Front Support Bracket from the forward hole using the included (1) 10mm x 30mm Hex Bolt, (2) 10mm x 20mm OD x 2mm Flat Washers, (1) 10mm Lock Washer and (1) 10mm Hex Nut, **(Figure 6)**. Leave hardware loose at this time.
3. Select the driver side Front Sidebar Bracket and line up the mounting holes with the holes in the previously installed Frame Mounting Bracket and Support Bracket. Bolt the (3) Brackets together with (2) 12mm x 40mm Hex Bolts, (4) 12mm x 24mm Small Flat Washers, (2) 12mm Lock Washers and (2) 12mm Hex Nuts. Snug but do not tighten hardware at this time.

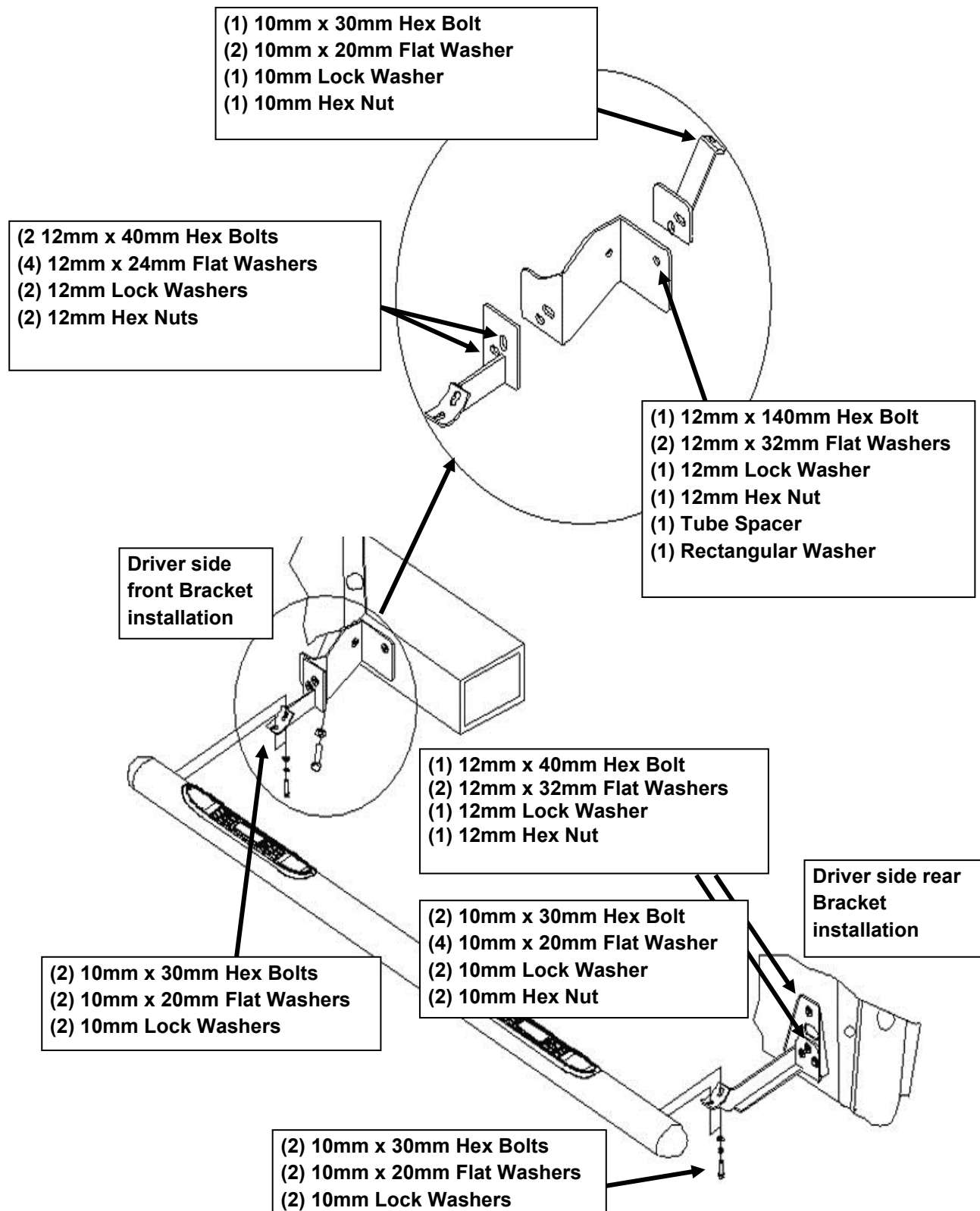


4. Move toward the rear mounting location, (**Figure 7**), and bolt the driver side Rear Frame Mounting Bracket to the frame with the included (1) 12mm x 40mm Hex Bolt, (2) 12mm x 32mm OD x 3mm Large Flat Washers, (1) 12mm Lock Washer and (1) 12mm Hex Nut, (**Figure 8 & 9**). Do not tighten hardware at this time.



- (1) 12mm x 40mm Hex Bolt  
(2) 12mm x 32mm Flat Washers  
(1) 12mm Lock Washer  
(1) 12mm Hex Nut

5. Line up the (3) holes in the Frame Mounting Bracket with the holes in the driver side Rear Sidebar Bracket. Insert (1) 12mm x 40mm Hex Bolt with (1) 12mm x 24mm OD x 2.5mm Small Flat Washer through the top mounting hole with (1) 12mm x 24mm OD x 2.5mm Small Flat Washer, (1) 12mm Lock Washer and (1) 12mm Hex Nut securing it in place. Insert (2) 10mm x 30mm Hex Bolts, (4) 10mm Flat Washers, (2) 10mm Lock Washers and (2) 10mm Hex Nuts through the (2) remaining mounting holes. Snug but do not tighten hardware at this time.
6. Carefully place the driver side Sidebar onto the Mounting Brackets and line up the threaded inserts with the slots in the brackets. Secure the Sidebar to the Brackets with (4) 10mm x 30mm Hex Bolts, (4) 10mm Flat Washers and (4) 10mm Lock Washers. Snug but do not tighten hardware at this time.
7. Level and adjust Sidebar properly and tighten all hardware.
8. Repeat steps 1 – 7 for passenger Sidebar installation.



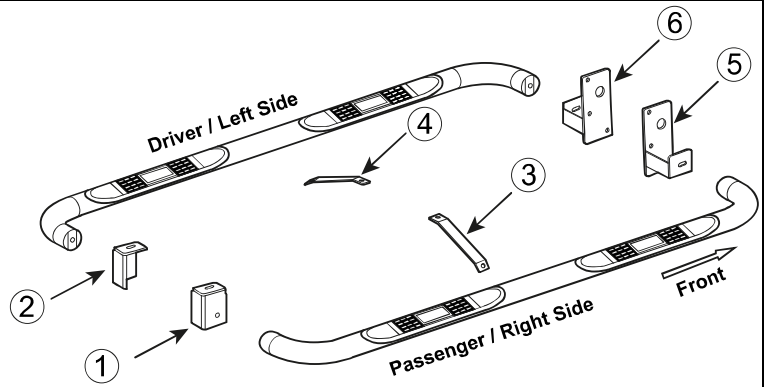
## PARTS IDENTIFICATION GUIDE

**Driver Side tube packed using "Green" color foam sheet. Passenger Side tube packed using "White" color foam sheet**

No.	Parts Identification
1	Passenger / Right 'Rear' Bracket marked "PR"
2	Driver / Left 'Rear' Bracket marked "DR"
3	Passenger / Right 'Center' Bracket marked "PC"
4	Driver / Left 'Center' Bracket marked "DC"
5	Passenger / Right 'Front' Bracket marked "PF"
6	Driver / Left 'Front' Bracket marked "DF"

### Note:

- > This guide is to identify the parts and not a reference for part count.
- > For part count, refer Parts List.
- > Product / Bracket image is representative and actual design may vary.



## PRODUCT CARE

- Periodically check the product to ensure all fasteners are tight and components are intact.
- Regular waxing is recommended to protect the finish of the product.
- **Use ONLY Non-Abrasive automotive wax.** Use of any soap, polish or wax that contains an abrasive is detrimental and can scratch the finish leading to corrosion.
- Aluminum polish may be used to polish small scratches and scuffs for **Stainless Steel finish.**
- Mild soap may be used to clean the product for both **Stainless Steel and Black finish.**

## FAQ's

### 1. Hardware's are not of correct size.

*In GMC / Chevrolet truck model 2006 & up, customer needs to reuse the factory body bolts to install the bracket. If your vehicle is not GMC / Chevrolet 2006 & up, ensure that holes are not partially covered with any plastic grommet or rust? If it is, remove the plastic grommet & rust from the thread holes & re-try the installation.*

### 2. Mounting Bracket are not getting Installed properly.

*In some cases Illustration images shown in Installation manual may not be the exactly same as per actual vehicle images ,also if Driver / Passenger side mounting brackets are very identical in the design, suggest referring Parts Identification guide to avoid fitment issue.*

### 3. Products are thumping / rattling after installation.

*Ensure that all required mounting brackets / hardware's are installed & tighten correctly. Suggest using white lithium / regular grease between the metal to metal contact surfaces.*

### 4. Side Bar is not aligning with vehicle / Step Pads are not aligning with vehicle doors.

*Side bar may be interchanged or mounting brackets are not installed at the correct position in the vehicle. Refer Parts identification guide.*

### 5. Missing / Excess Hardware.

*Recheck hardware count as per the part list.*

### 6. Product not installing properly.

*Ensure make model year, cab length and bed size of your vehicle is listed in the application. All installation steps are followed correctly.*