



4" Oval Straight Side Bar

Part No. A1504S/B

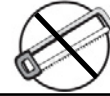


Fits: 1999-2004

F150/F250LD Super Cab



60-180 min



CUTTING NOT REQUIRED



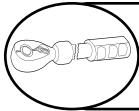
DRILLING NOT REQUIRED



REMOVE CONTENTS FROM BOX. VERIFY ALL PARTS ARE PRESENT.



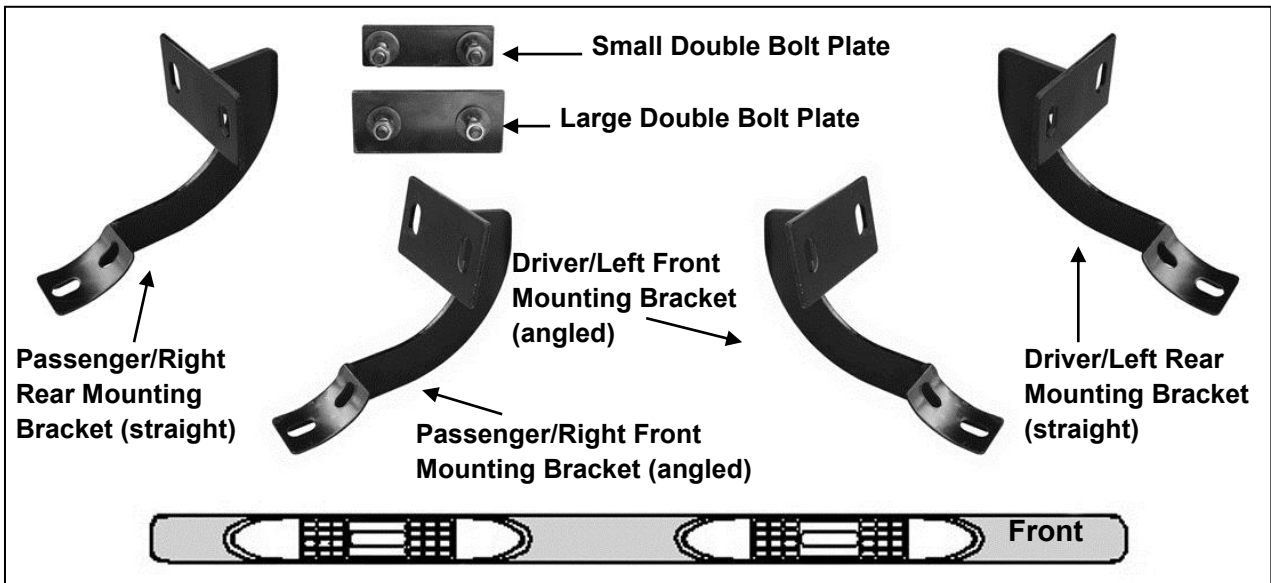
READ INSTRUCTIONS CAREFULLY BEFORE STARTING INSTALLATION.



DO NOT OVER TORQUE. STANDARD OPERATING LOAD FOR TIGHTEN BODY MOUNT NUTS & BOLTS VARIES FROM 45 TO 65 FOOT POUND.

PARTS LIST:

Qty	Part Description	Qty	Part Description
1	Driver/Left Sidebar	8	10mm Lock Washers
1	Passenger/Right Sidebar	8	10mm x 34mm OD x 3mm Flat Washers
1	Driver/Left Front Mounting Bracket (angled)	8	10mm Hex Nuts
1	Passenger/Right Front Mounting Bracket (angled)	8	8mm x 25mm Hex Bolts
1	Driver/Left Rear Mounting Bracket (straight)	8	8mm x 24mm OD x 2mm Flat Washers
1	Passenger/Right Rear Mounting Bracket (straight)	8	8mm Lock Washers
4	10mm x 35mm Large Double Bolt Plates	2	10mm Plastic Retainers (3-door only)
1	10mm x 35mm Small Double Bolt Plates (use for 3-door only)		

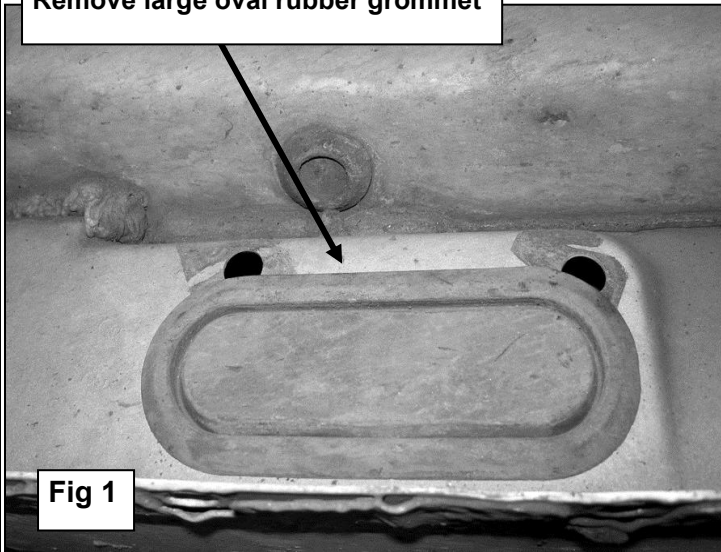


INSTALLATION PROCEDURE

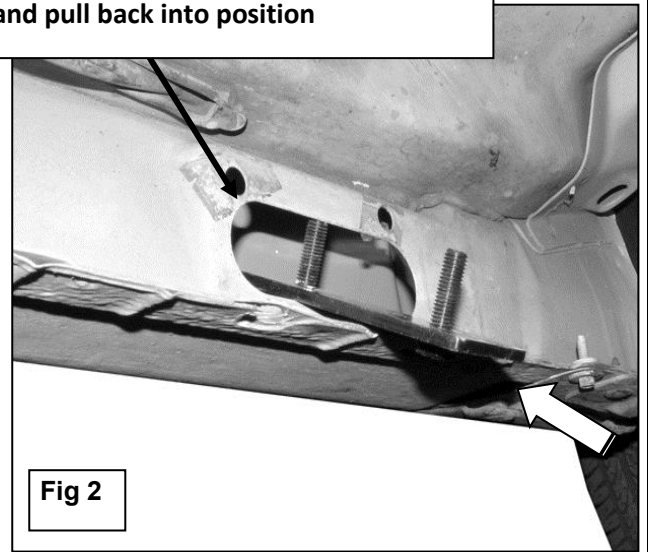
1. Start installation from under the driver/left side of the vehicle. Remove the large oval rubber cover located on the inner side panel toward the front, **(Figure 1)**. Insert (1) Double Bolt Plate into the oval hole, **(Figure 2)**, and pull it back into position against the inner body panel, **(Figure 3)**.

Front Bolt Plate Installation Example

Remove large oval rubber grommet

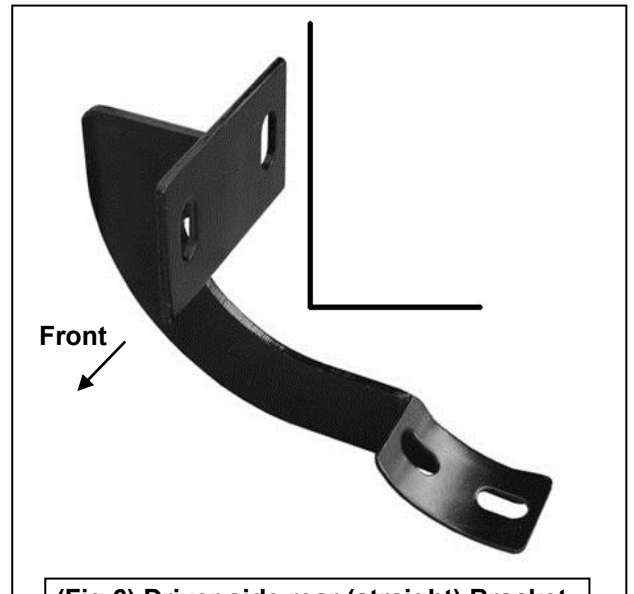
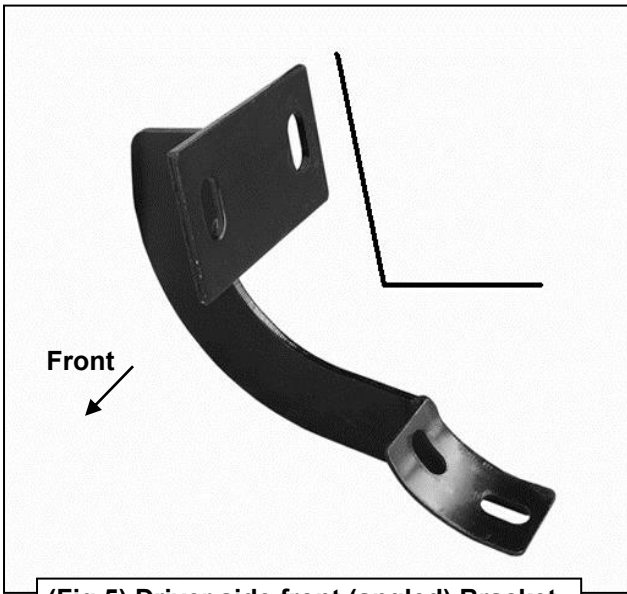
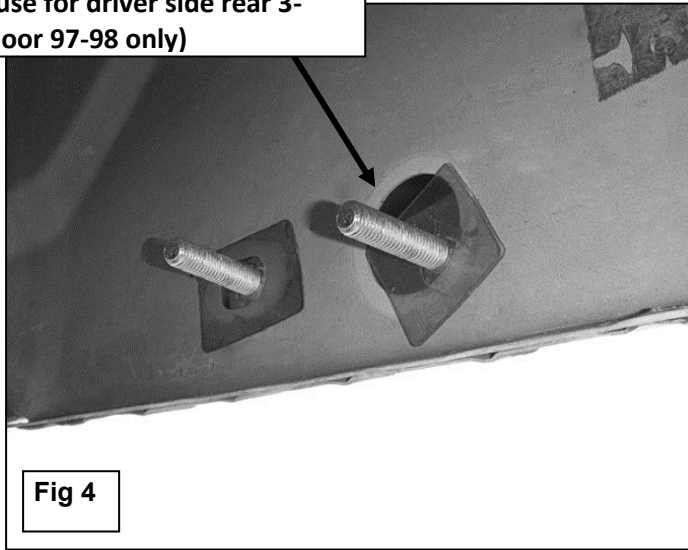


Slide Double Bolt Plate into opening and pull back into position

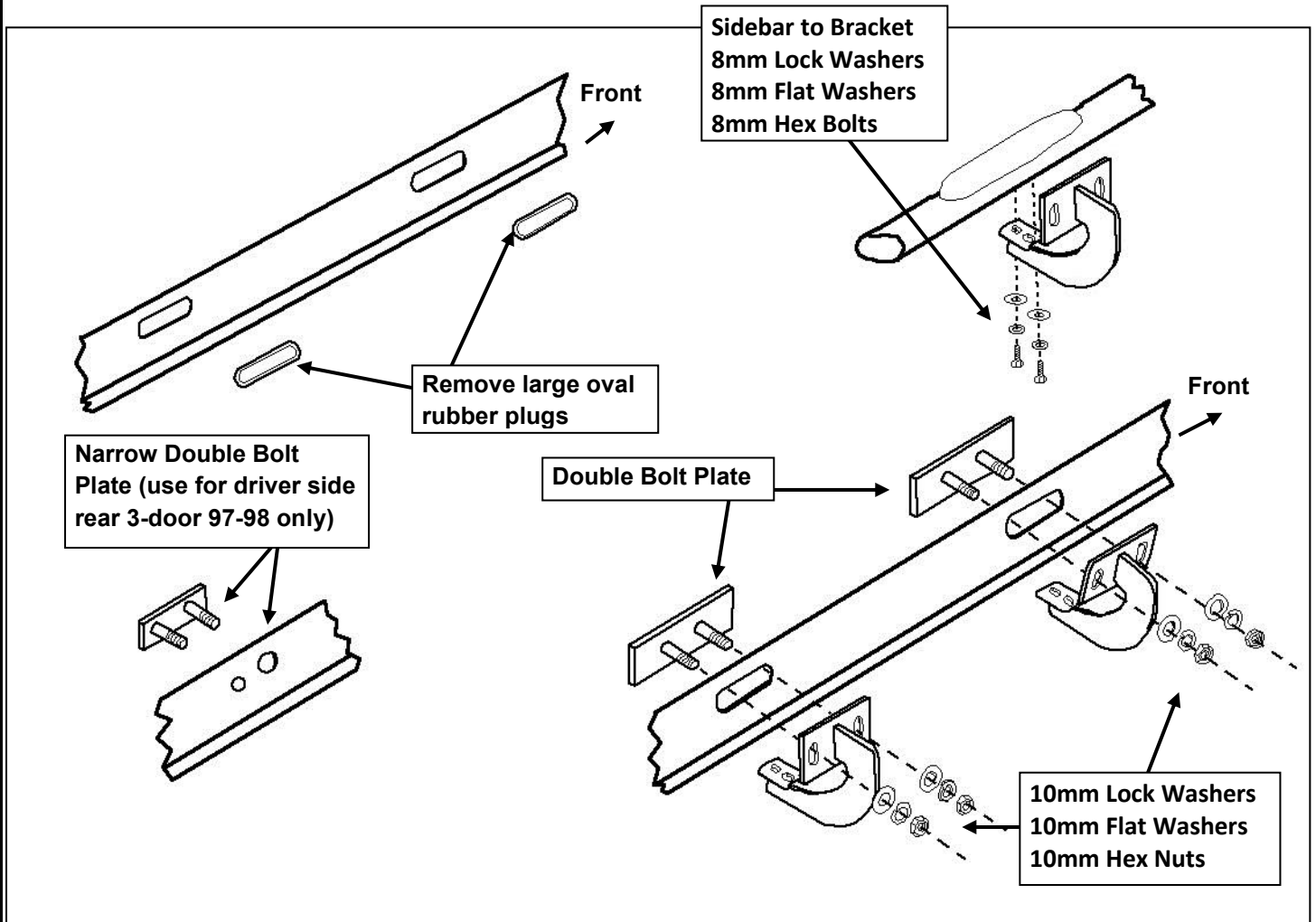


2. Select the driver side front Mounting Bracket. **NOTE:** The Front Bracket mounting plate is angled, **(Figure 5)**, the mounting plate on the Rear Bracket is straight up and down, **(Figure 6)**. Hold the Bolt Plate in place and slide the Bracket over the threaded studs, **(Figure 7)**. Secure the Bracket to the Bolt Plate with the included (2) 10mm Lock Washers, (2) 10mm Flat Washers and (2) 10mm Hex Nuts, **(Figure 7)**. Leave hardware loose at this time.
3. Repeat **Steps 2 – 3** for driver side Rear Bracket installation. **NOTE:** A Narrow Double Bolt Plate has been included. On 3-door models, insert the Bolt Plate into the large, round hole and line up with the smaller round hole, **(Figures 4 & 7)**. Use the included 10mm Plastic Retainers to hold the Bolt Plate in position and secure the Bracket as previously described in **Step 2**.

**Narrow Double Bolt Plate
with Plastic Retainers
(use for driver side rear 3-
door 97-98 only)**



4. Once the Mounting Brackets have been installed, carefully unpack and separate the Driver and Passenger Sidebar. Attach the Sidebar to the Mounting Brackets with the included (4) 8x25mm Hex Bolts, (4) 8mm Lock Washers and (4) 8mm Flat Washers, (**Figure 7**). Do not tighten hardware at this time.
5. Level and adjust the Sidebar and tighten all hardware at this time.
6. Repeat steps 2 – 6 for passenger Sidebar.
7. Do periodic inspections of the installation to make sure all hardware is secure and tight.



(Fig 7) Driver/Left Side Installation Illustrated

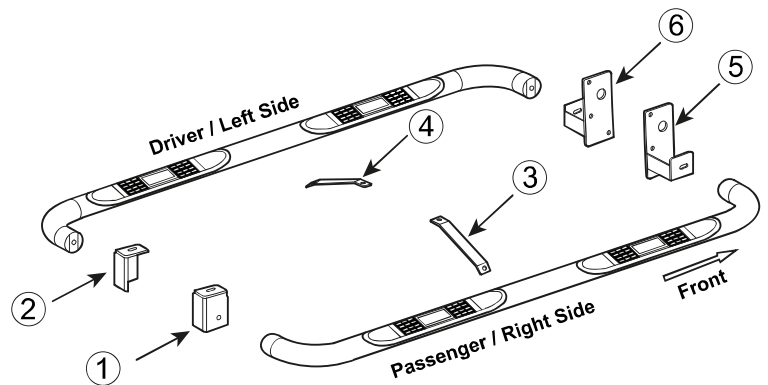
PARTS IDENTIFICATION GUIDE

Driver Side tube packed using "Green" color foam sheet. Passenger Side tube packed using "White" color foam sheet

No.	Parts Identification
1	Passenger / Right 'Rear' Bracket marked "PR"
2	Driver / Left 'Rear' Bracket marked "DR"
3	Passenger / Right 'Center' Bracket marked "PC"
4	Driver / Left 'Center' Bracket marked "DC"
5	Passenger / Right 'Front' Bracket marked "PF"
6	Driver / Left 'Front' Bracket marked "DF"

Note:

- This guide is to identify the parts and not a reference for part count.
- Product / Bracket image is for representative purpose only.
- Actual design may vary based on application.
- Refer Installation Instructions for Hardware Kit detail.



PRODUCT CARE

- Periodically check the product to ensure all fasteners are tight and components are intact.
- Regular waxing is recommended to protect the finish of the product.
- **Use ONLY Non-Abrasive automotive wax.** Use of any soap, polish or wax that contains an abrasive is detrimental and can scratch the finish leading to corrosion.
- Aluminum polish may be used to polish small scratches and scuffs for **Stainless Steel finish.**
- Mild soap may be used to clean the product for both **Stainless Steel and Black finish.**

FAQ's

1. **Hardware's are not of correct size.**
In GMC / Chevrolet truck model 2006 & up, customer needs to reuse the factory body bolts to install the bracket. If your vehicle is not GMC / Chevrolet 2006 & up, please ensure that holes are not partially covered with any plastic grommet or rust? If it is, please remove the plastic grommet & rust from the thread holes & re-try the installation.
2. **Mounting Bracket are not getting Installed properly.**
In some cases Illustration images shown in Installation manual may not be the exactly same as per actual vehicle images ,also if Driver / Passenger side mounting brackets are very identical in the design, suggest referring Parts Identification guide to avoid fitment issue.
3. **Products are thumping / rattling after installation.**
Please ensure that all required mounting brackets / hardware's are installed & tighten correctly. Suggest using white lithium / regular grease between the metal to metal contact surfaces.
4. **Side Bar is not aligning with vehicle / Step Pads are not aligning with vehicle doors.**
Side bar may be interchanged or mounting brackets are not installed at the correct position in the vehicle. Please refer Parts identification guide.
5. **Missing / Excess Hardware.**
Recheck hardware count as per the part list.
6. **Product not installing properly.**
Ensure make model year, cab length and bed size of your vehicle is listed in the application. All installation steps are followed correctly.