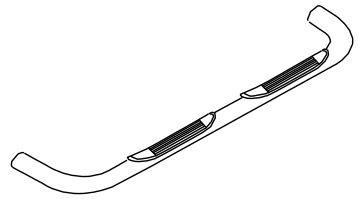




3" Side Bar

Part No. A0002S/B



Fits: 2002-2008
2003-2009

Dodge Ram 1500 Quad Cab
Dodge Ram 2500/3500 Quad Cab



30-60 min



Cutting Not Required



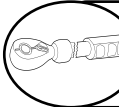
Drilling Not Required



REMOVE CONTENTS FROM BOX. VERIFY ALL PARTS ARE PRESENT.



READ INSTRUCTIONS CAREFULLY BEFORE STARTING INSTALLATION.

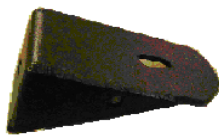


DO NOT OVER TORQUE. STANDARD OPERATING LOAD FOR TIGHTEN BODY MOUNT NUTS & BOLTS VARIES FROM 45 TO 65 FOOT POUND.

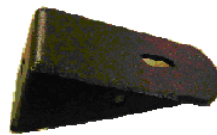
PARTS LIST:

Qty	Part Description	Qty	Part Description
1 Set	Side Bar	8	3/8"-16 Hex Nut
1 Set	Front Mounting Bracket -Short	2	1/2"-13 Hex Nut
1 Set	Rear Mounting Bracket -Long	4	1/2"-13 x 2" Hex Head Bolt
1 Set	Front Support Bracket A	10	1/2" Lock Washer
1 Set	Front Support Bracket B	12	1/2" Flat Washer
1 Set	Rear Support Bracket	4	M12-1.75 x 120mm Hex Head Bolt
4	3/8" Plastic Washer	4	1/2"-1.88" Spacer washer
2	1/2"-13 x 1 1/2" Hex Head Bolt	4	3/8"-16 x 11/5" "T" Bolt Plate
4	3/8"-16 x 1 1/2" Hex Head Bolt	4	1/2" Plastic plate
12	3/8" Flat Washer	8	3/8" Lock Washer

DRIVER (LEFT) FRONT



PASSENGER (RIGHT) FRONT



DRIVER (LEFT) FRONT SUPPORT



PASSENGER (RIGHT) FRONT SUPPORT



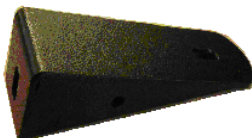
DRIVER (LEFT) FRONT SUPPORT



PASSENGER (RIGHT) FRONT SUPPORT



DRIVER (LEFT) REAR



PASSENGER (RIGHT) REAR



DRIVER (LEFT) REAR SUPPORT



PASSENGER (RIGHT) REAR SUPPORT



INSTALLATION PROCEDURE

1. From underside the driver side front of the vehicle, remove the factory body mount bolt. Remove but do not discard the rubber bushing. Install (1) M12-1.75mm x 120mm Hex Bolt with (1) 1/2"-1.88" Spacer washer and (1) 1/2" Lock Washer through the Driver Side Front Mounting Bracket. Position (1) Spacer Plate between the Mounting Bracket and the factory rubber bushing, (Figure 4). Slide the complete assembly up into position under the cab mounting bracket and thread the 12mm Hex Bolt into the factory mounting hole. Snug but do not tighten at this time.
2. Next select the correct Front Support Bracket for your application.

2002-2005 Models.

Select the straight 2-hole Support Bracket. Attach one end to the side of the Front Mounting Bracket with (1) 3/8"-16 x 1 1/2" Hex Head Bolt, (2) 3/8" Flat Washers, (1) 3/8" Lock Washer and (1) 3/8" Hex Nut. Rotate the Support Bracket up to meet the factory body mount bracket and line up the hole in the body mount bracket with the Support Bracket, (Figure 1). Bolt the Support Bracket to the body mount bracket with (1) 1/2"-13 x 1 1/2" Hex Head Bolt, (2) 1/2" Flat Washers, (1) 1/2" Lock Washer and (1) 1/2" Hex Nut. NOTE: Some models may require drilling a mounting hole in the factory body mount bracket if not equipped.

IMPORTANT! Any cutting or drilling tool may break or shatter. Government regulations require safety glasses & equipment at all times when cutting or drilling.

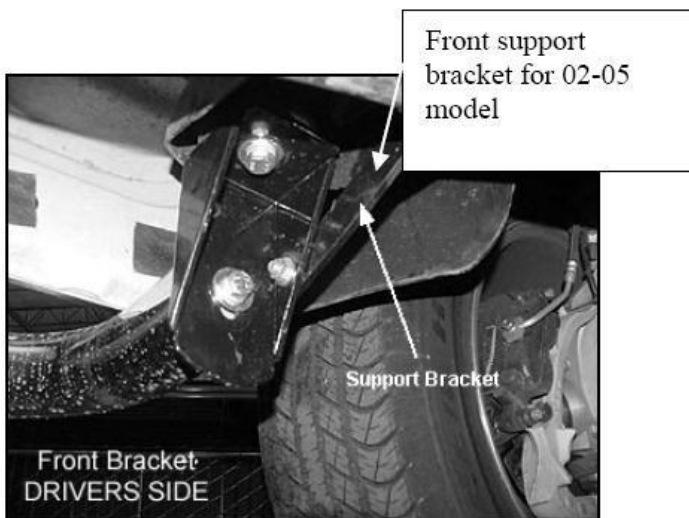


FIG. 1



FIG. 2

2006-2008 Models.

Select the front Support Bracket with the angled end. Remove the sealing tape on the inner body panel to uncover the mounting location. Partially thread (1) 3/8" Plastic Washer onto a 3/8"-16 x 11/5" "T" Bolt Plate. Insert the Bolt Plate into the mounting hole and thread the Plastic Washer down until it is flush against the body panel, (Figure 3). NOTE; The Plastic Washer is designed to prevent the Bolt Plate from falling into the body cavity when properly installed. Secure the Support Bracket to the Bolt Plate with (1) 3/8" Flat Washer, (1) 3/8" Lock Washer and (1) 3/8" Hex Nut. Attach the Support Bracket to the front-facing side of the Mounting Bracket with (1) 3/8"-16 x 1 1/2" Hex Head Bolt, (2) 3/8" Flat Washers, (1) 3/8" Lock Washer and (1) 3/8" Hex Nut, (Figure 5). Snug but do not tighten hardware at this time.

3. Repeat Step 2 for the rear Mounting Bracket installation, (Figure 2).
4. Next, select the rear Support Bracket (90-degree bend on one end). NOTE: The rear Support Bracket is not used on the Regular Cab models. Remove the sealing tape on the inner body panel to uncover the mounting location. Partially thread (1) 3/8" Plastic Retainer onto a 3/8"-16 x 11/5" "T" Bolt Plate. Insert the Bolt Plate into the mounting hole and thread the Plastic Retainer down until it is flush against the body panel, (Figure 3). NOTE; The Plastic Retainer is designed to prevent the Bolt Plate from falling into the body cavity when properly installed. Secure the Support Bracket to the Bolt Plate with (1) 3/8" Flat Washer, (1) 3/8" Lock Washer and (1) 3/8" Hex Nut. Attach the Support Bracket to the front-facing side of the Mounting Bracket with (1) 3/8"-16 x 1 1/2" Hex Head Bolt, (2) 3/8" Flat Washers, (1) 3/8" Lock Washer and (1) 3/8" Hex Nut. Snug but do not tighten hardware at this time.
5. Carefully unwrap the Sidebars and select the driver sidebar. Line up the end of the Sidebar with the front Mounting Bracket and secure with (1) 1/2"-13 x 2" Hex Head Bolt, (1) 1/2" Lock washer and (1) 1/2" Flat Washer. Do not tighten hardware at this time. Repeat this step to bolt the Sidebar to the rear Mounting Bracket.
6. Align and adjust the Sidebar then tighten all hardware.

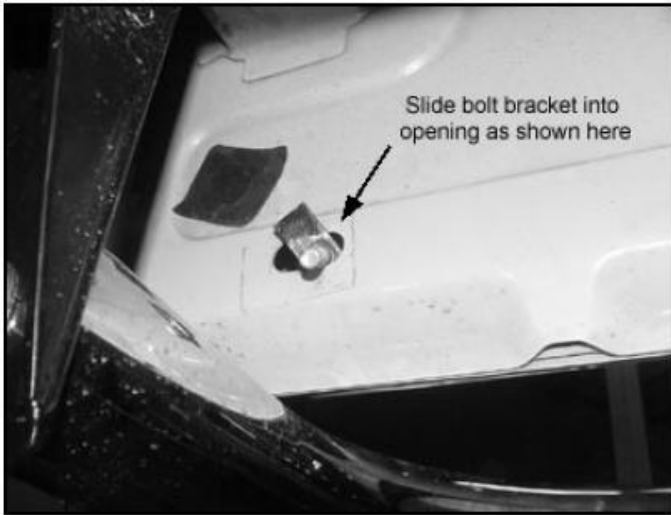


FIG.3

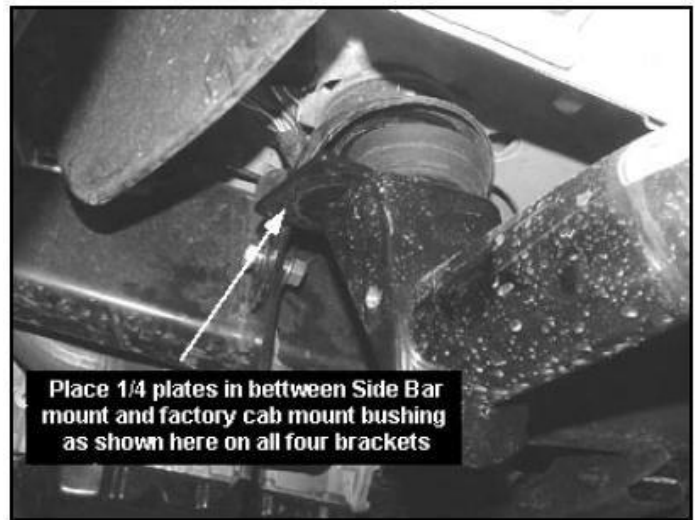


FIG. 4



FIG. 5 FRONT BRACKET (DRIVER SIDE)

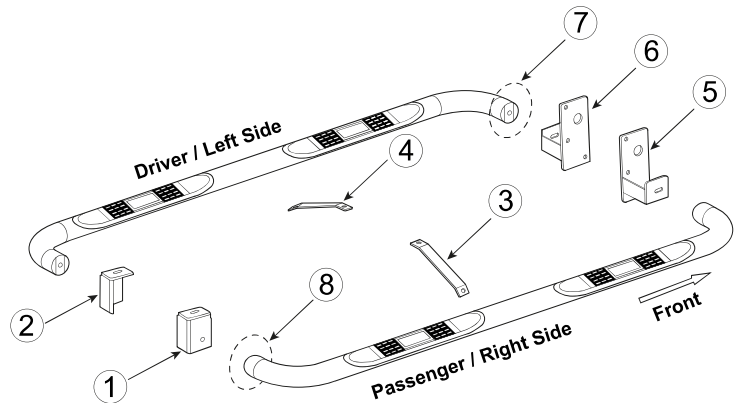
PARTS IDENTIFICATION GUIDE

Driver Side tube taped in "Red" Color. Passenger Side tube taped in "Blue" Color.

No.	Parts Identification
1	Passenger / Right 'Rear' Bracket marked "RR"
2	Driver / Left 'Rear' Bracket marked "RL"
3	Passenger / Right 'Center' Bracket marked "CR"
4	Driver / Left 'Center' Bracket marked "CL"
5	Passenger / Right 'Front' Bracket marked "FR"
6	Driver / Left 'Front' Bracket marked "FL"
7	'Left' marked "L"
8	'Right' marked "R"

Note:

- This guide is to identify the parts and not a reference for part count.
- Product / Bracket image is for representative purpose only.
- Actual design may vary based on application.
- Refer Parts List for Hardware.



PRODUCT CARE

- Periodically check the product to ensure all fasteners are tight and components are intact.
- Regular waxing is recommended to protect the finish of the product.
- **Use ONLY Non-Abrasive automotive wax.** Use of any soap, polish or wax that contains an abrasive is detrimental and can scratch the finish leading to corrosion.
- Aluminum polish may be used to polish small scratches and scuffs for **Stainless Steel finish.**
- Mild soap may be used to clean the product for both **Stainless Steel and Black finish.**

FAQ's

1. Hardware's are not of correct size.

In GMC / Chevrolet truck model 2006 & up, customer needs to reuse the factory body bolts to install the bracket. If your vehicle is not GMC / Chevrolet 2006 & up, ensure that holes are not partially covered with any plastic grommet or rust? If it is, remove the plastic grommet & rust from the thread holes & re-try the installation.

2. Mounting Bracket are not getting Installed properly.

In some cases Illustration images shown in Installation manual may not be the exactly same as per actual vehicle images ,also if Driver / Passenger side mounting brackets are very identical in the design, suggest referring Parts Identification guide to avoid fitment issue.

3. Products are thumping / rattling after installation.

Ensure that all required mounting brackets / hardware's are installed & tighten correctly. Suggest using white lithium / regular grease between the metal to metal contact surfaces.

4. Side Bar is not aligning with vehicle / Step Pads are not aligning with vehicle doors.

Side bar may be interchanged or mounting brackets are not installed at the correct position in the vehicle. Refer Parts identification guide.

5. Missing / Excess Hardware.

Recheck hardware count as per the part list.

6. Product not installing properly.

Ensure make model year, cab length and bed size of your vehicle is listed in the application. All installation steps are followed correctly.