



3" Bull Bar

Part No. 8956422/B0015B



Fits: 2007 - Current
2008 - Current

Toyota Tundra
Toyota Sequoia



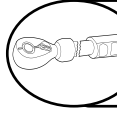
TOW HOOKS MUST BE REMOVED./ WILL NOT WORK ON VEHICLES WITH ACTIVE CURSE CONTROL SYSTEM.



REMOVE CONTENTS FROM BOX. VERIFY ALL PARTS ARE PRESENT.



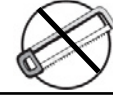
READ INSTRUCTIONS CAREFULLY BEFORE STARTING INSTALLATION.



DO NOT OVER TORQUE. STANDARD OPERATING LOAD FOR TIGHTEN BODY MOUNT NUTS & BOLTS VARIES FROM 45 TO 65 FOOT POUND.



30-60 min



Cutting Not Required



Drilling Not Required

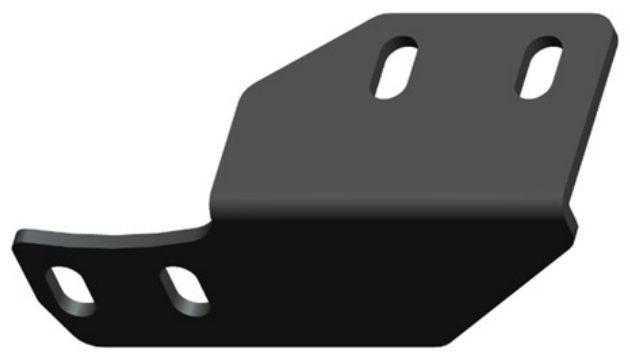
PARTS LIST:

Qty	Part Description	Qty	Part Description
1	Bull Bar	4	12mm Nylock Nuts
1	Driver Side Bracket	8	12mm Flat Washers
1	Passenger Side Bracket	4	12-1.75mm x 30mm Hex Head Bolts

Passenger Side Bracket



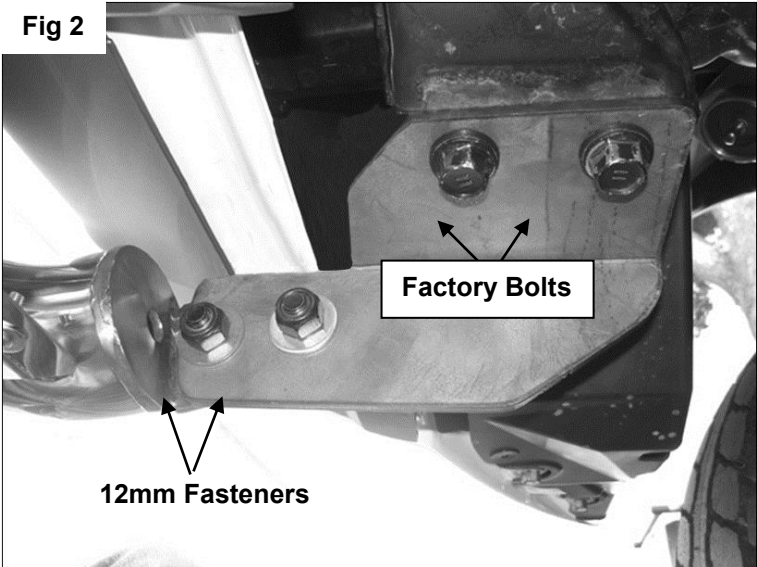
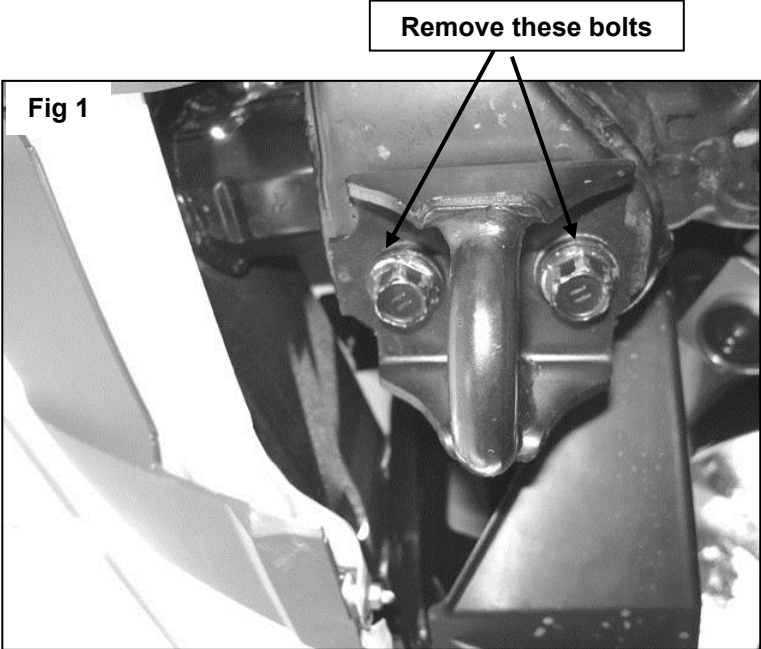
Driver Side Bracket



INSTALLATION PROCEDURE

1. Locate and remove the factory tow hooks underneath the vehicle (**Figure 1**). Save hardware for later use.
2. Locate Passenger Side Mounting Bracket and loosely attach it to vehicle by using the factory bolts removed in step two (**Figure 2**). Passenger Side shown in Figure 3. Repeat this step for Driver Side Mounting Bracket.
3. Once the Mounting Brackets are loosely installed, with help position the Bull Bar on the outer side of the Mounting Brackets and attach it with the included (4) 12-1.75 mm x 30mm Hex Head Bolts, (4) 12mm Nylock Nuts, and (8) 12mm Flat Washers (**Figure 2**).
4. Level and adjust the Bull Bar and tighten all hardware at this time.

Passenger Side Installation Pictured



PRODUCT CARE

- Periodically check the product to ensure all fasteners are tight and components are intact.
- Regular waxing is recommended to protect the finish of the product.
- **Use ONLY Non-Abrasive automotive wax.** Use of any soap, polish or wax that contains an abrasive is detrimental and can scratch the finish leading to corrosion.
- Aluminum polish may be used to polish small scratches and scuffs for **Stainless Steel finish.**
- Mild soap may be used to clean the product for both **Stainless Steel and Black finish.**

FAQ'S

1. Hardware's are not of correct size.

In GMC / Chevrolet truck model 2006 & up, customer needs to reuse the factory body bolts to install the bracket. If your vehicle is not GMC / Chevrolet 2006 & up, ensure that holes are not partially covered with any plastic grommet or rust? If it is, remove the plastic grommet & rust from the thread holes & re-try the installation.

2. Mounting Bracket are not getting Installed properly.

In some cases Illustration images shown in Installation manual may not be the exactly same as per actual vehicle images ,also if Driver / Passenger side mounting brackets are very identical in the design, suggest referring Parts Identification guide to avoid fitment issue.

3. Products are thumping / rattling after installation.

Ensure that all required mounting brackets / hardware's are installed & tighten correctly. Suggest using white lithium / regular grease between the metal to metal contact surfaces.

4. Side Bar is not aligning with vehicle / Step Pads are not aligning with vehicle doors.

Side bar may be interchanged or mounting brackets are not installed at the correct position in the vehicle. Refer Parts identification guide.

5. Missing / Excess Hardware.

Recheck hardware count as per the part list.

6. Product not installing properly.

Ensure make model year, cab length and bed size of your vehicle is listed in the application. All installation steps are followed correctly.