



# 4" Oval Nerf Bar

Part No.2950522051/3



Fits: 2005 - Current

Toyota Tacoma Double Cab



30-60 min

Cutting Not Required

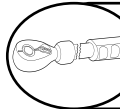
Drilling Not Required



REMOVE CONTENTS FROM BOX. VERIFY ALL PARTS ARE PRESENT.



READ INSTRUCTIONS CAREFULLY BEFORE STARTING INSTALLATION.



DO NOT OVER TORQUE. STANDARD OPERATING LOAD FOR TIGHTEN BODY MOUNT NUTS & BOLTS VARIES FROM 45 TO 65 FOOT POUND.

### PARTS LIST:

Qty	Part Description	Qty	Part Description
1 Set	Oval step bar	12	M8 Flat Washer
1 Set	Front Bracket	12	M8 Lock Washer
1 Set	Center Bracket	12	M10-1.5 x 30mm Button Head Bolt
1 Set	Rear Bracket	12	M10 Flat Washer
12	M8-1.25 x 25mm Hex Head Bolt	12	M10 Lock Washer

DRIVER (LEFT) FRONT	DRIVER(LEFT) CENTER	DRIVER (LEFT)REAR	PASSENGER (RIGHT)REAR	PASSENGER (RIGHT)CENTER	PASSENGER (RIGHT)FRONT

### INSTALLATION PROCEDURE

1. Install driver side bracket as shown (see Fig 1) placing bracket over existing bolt and tightening with M8 Flange nut. Place one M8- x 25mm hex head bolt, M8 flat washer, and M8 lock washer through bracket to existing hole on underside of body panel (see Fig 1). Hand tightens.
2. Attach rear driver side bracket to underside body panel by using the same method as in step 2. Hand tighten.
3. Place driver side step bar on brackets. Each step bar is marked driver and passenger.
4. Assemble with M10 button head bolts and M10 washers. 2 bolts per bracket, 4 bolts per bar (see Fig 3). Hand tighten.
5. Repeat installation for passenger side. (see Fig 2)

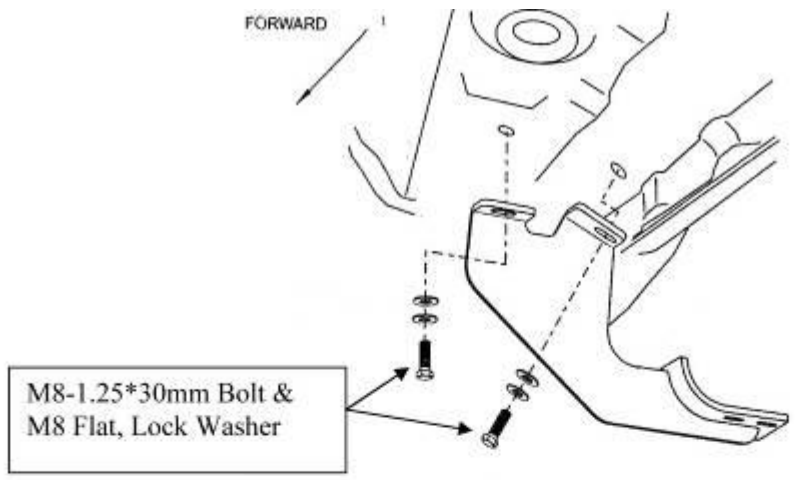


Figure 1. Passenger Side – Front Bracket

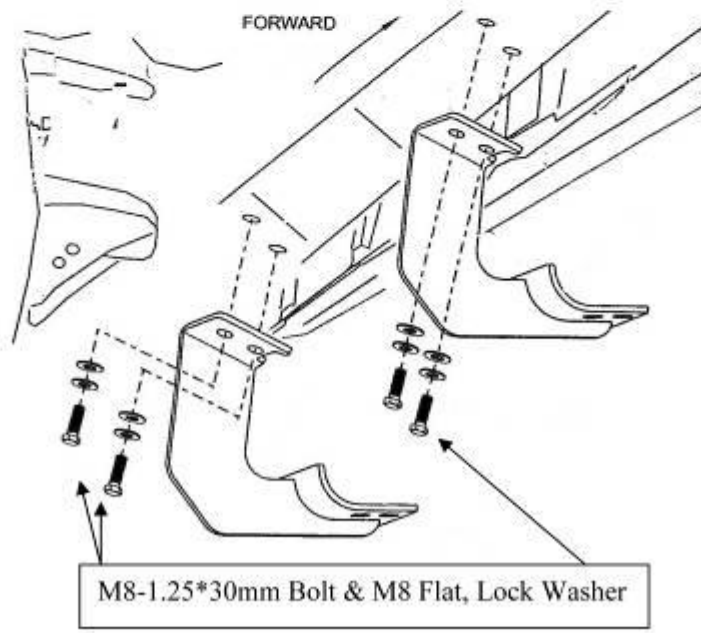
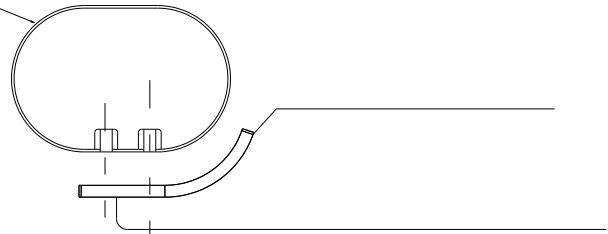


Figure 2. Passenger Side –Center & Rear Bracket

STEP BAR



M10X30 button head bolt  
M10 flat washer  
M10 lock washer

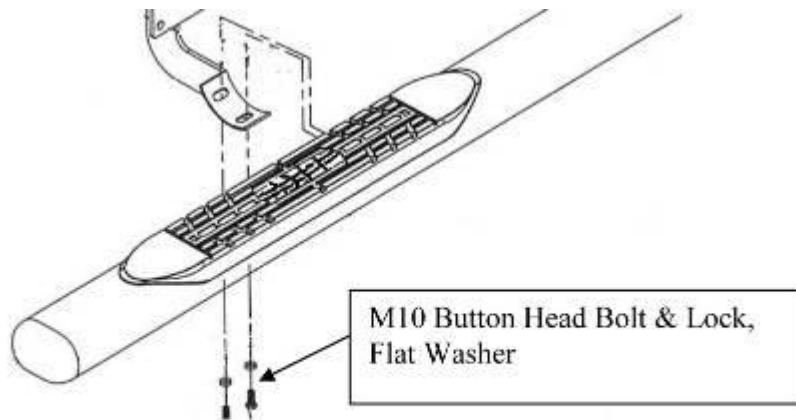
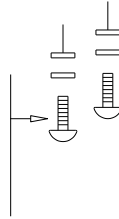


Figure 3. Installation View of Bracket & Bar

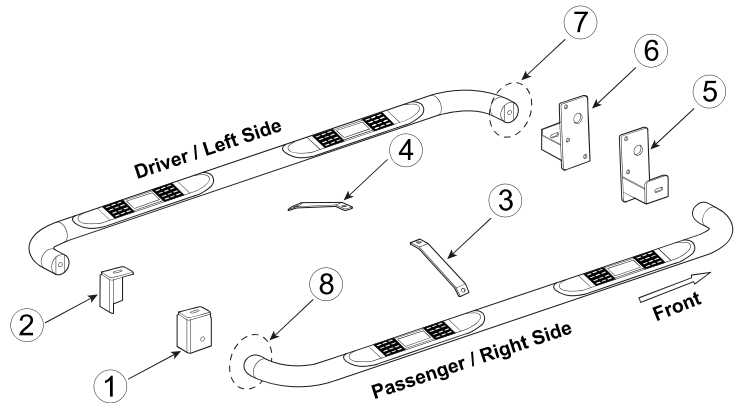
## PARTS IDENTIFICATION GUIDE

*Driver Side tube taped in "Red" Color. Passenger Side tube taped in "Blue" Color.*

No.	Parts Identification
1	Passenger / Right 'Rear' Bracket marked "RR"
2	Driver / Left 'Rear' Bracket marked "RL"
3	Passenger / Right 'Center' Bracket marked "CR"
4	Driver / Left 'Center' Bracket marked "CL"
5	Passenger / Right 'Front' Bracket marked "FR"
6	Driver / Left 'Front' Bracket marked "FL"
7	'Left' marked "L"
8	'Right' marked "R"

**Note:**

- This guide is to identify the parts and not a reference for part count.
- Product / Bracket image is for representative purpose only.
- Actual design may vary based on application.
- Refer Parts List for Hardware.



## PRODUCT CARE

- Periodically check the product to ensure all fasteners are tight and components are intact.
- Regular waxing is recommended to protect the finish of the product.
- **Use ONLY Non-Abrasive automotive wax.** Use of any soap, polish or wax that contains an abrasive is detrimental and can scratch the finish leading to corrosion.
- Aluminum polish may be used to polish small scratches and scuffs for **Stainless Steel finish.**
- Mild soap may be used to clean the product for both **Stainless Steel and Black finish.**

## FAQ's

- 1. Hardware's are not of correct size.**  
*In GMC / Chevrolet truck model 2006 & up, customer needs to reuse the factory body bolts to install the bracket. If your vehicle is not GMC / Chevrolet 2006 & up, ensure that holes are not partially covered with any plastic grommet or rust? If it is, remove the plastic grommet & rust from the thread holes & re-try the installation.*
- 2. Mounting Bracket are not getting Installed properly.**  
*In some cases Illustration images shown in Installation manual may not be the exactly same as per actual vehicle images ,also if Driver / Passenger side mounting brackets are very identical in the design, suggest referring Parts Identification guide to avoid fitment issue.*
- 3. Products are thumping / rattling after installation.**  
*Ensure that all required mounting brackets / hardware's are installed & tighten correctly. Suggest using white lithium / regular grease between the metal to metal contact surfaces.*
- 4. Side Bar is not aligning with vehicle / Step Pads are not aligning with vehicle doors.**  
*Side bar may be interchanged or mounting brackets are not installed at the correct position in the vehicle. Refer Parts identification guide.*
- 5. Missing / Excess Hardware.**  
*Recheck hardware count as per the part list.*
- 6. Product not installing properly.**  
*Ensure make model year, cab length and bed size of your vehicle is listed in the application. All installation steps are followed correctly.*