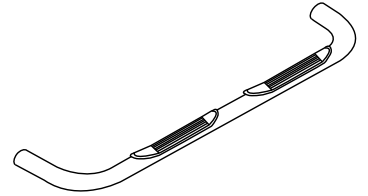




3" Side Bar

Part No. 1130302041/3

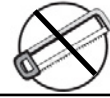


Fits: 2004 – 2008

Ford F150 Extended Cab



30-60 min



Cutting Not Required



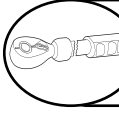
Drilling Not Required



REMOVE CONTENTS FROM BOX. VERIFY ALL PARTS ARE PRESENT.



READ INSTRUCTIONS CAREFULLY BEFORE STARTING INSTALLATION.



DO NOT OVER TORQUE. STANDARD OPERATING LOAD FOR TIGHTEN BODY MOUNT NUTS & BOLTS VARIES FROM 45 TO 65 FOOT POUND.

PARTS LIST:

Qty	Part Description	Qty	Part Description
1 Set	Side Bar	8	3/8"-16 Hex Nut
1 Set	Front Bracket	12	3/8" Lock Washer
1 Set	Rear Bracket	16	3/8" Flat Washer
4	1/2"-13 x 1 1/2" Hex Head Bolt	8	3/8"-16 x 1 1/4" Hex Head Bolt
2	1/2"-13 Hex Nut	2	1/2"-13 x 1 1/2" "T" Bolt plate
8	1/2" Flat Washer	2	3/8"-16 x 1 1/4" "T" Bolt plate
8	1/2" Lock Washer	4	3/8" Plastic Washer
4	3/8"-16 Clip Nut		

DRIVER (LEFT) FRONT	DRIVER (LEFT) REAR	PASSENGER (RIGHT) REAR	PASSENGER (RIGHT) FRONT

INSTALLATION PROCEDURE

⚠ IMPORTANT: A magnetic pick up tool is recommended to assist with the installation.

1. Remove the end caps on the side bars before beginning installation.
2. Remove black rubber plugs and any tape on inside rocker panel that line up with bracket installation.
3. Install passenger front mounting bracket by placing the bolt plate through hole in body as shown in Figure #1. NOTE: You may need to tape the bolt plate into position with tape so that it will stay there while you slide on the bracket. Install 3/8" clip nuts as shown in figure #2. Position front bracket with downward sloping end towards front of vehicle. Attach bracket to bolt plate with 1/2" flat washer, 1/2" lock washer, and 1/2" nut as shown in figure #3. Next, attach 3/8" inch bolts to clip nuts with 3/8" flat washers, 3/8" lock washers, and 3/8" hex nuts as shown in figure #3. Assemble finger tight only.
4. Install rear mounting bracket by removing rubber plugs from inside of rocker panel. Insert rear bolt plate through the larger hole as shown in figure #4. Attach the rear bracket to the bolt plate with 3/8" flat washers, 3/8" lock washers, and 3/8" nuts as shown in figure #5. Again, assemble finger tight.

5. Place step bar tube up to front and rear brackets and fasten with $\frac{1}{2}$ " x $1 \frac{1}{2}$ " hex head bolts, $\frac{1}{2}$ " flat washers, and $\frac{1}{2}$ " lock washers. Finger tight only.
6. After all mounting points are in place, tighten all bracket bolts accordingly. Next tighten side bar bolts. Recheck bolts periodically.

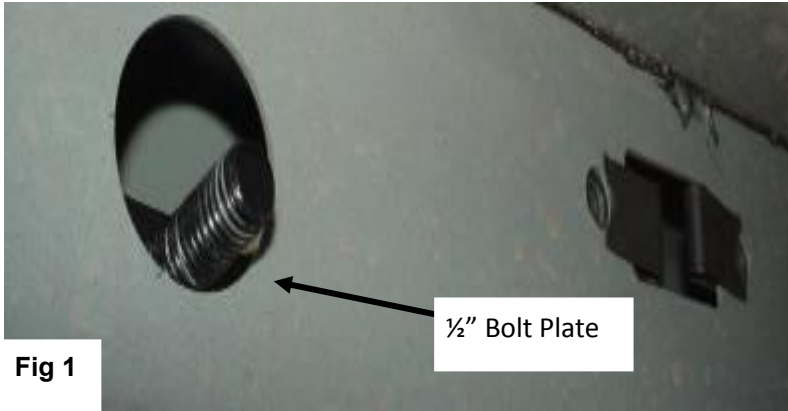


Figure #1

Front passenger's side bolt plate installation



Figure #2

Installation of $\frac{3}{8}$ " clip nuts

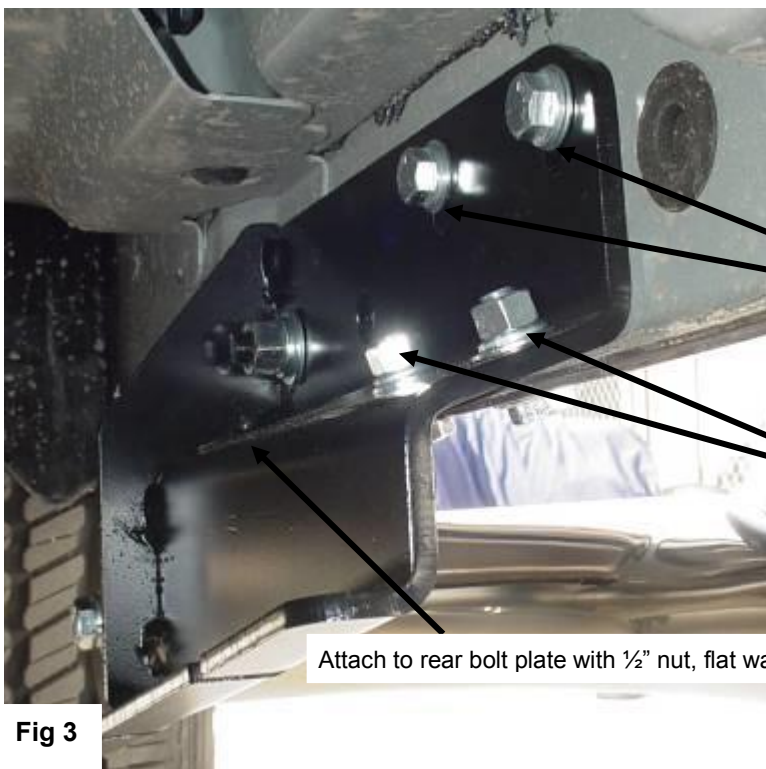


Figure #3

Front Passenger's Side Bracket installation

Attach to $\frac{3}{8}$ " Clip Nuts

Attach through existing holes in rocker panel edge with $\frac{3}{8}$ " bolts, lock washers, flat washers, and nuts

Attach to rear bolt plate with $\frac{1}{2}$ " nut, flat washer, and lock washer



Fig 4

Figure #4

Rear passenger's bolt Plate installation

Install 3/8" rear bolt plate through large hole



Fig 5

Figure #5

Rear Passenger's Bracket Installation

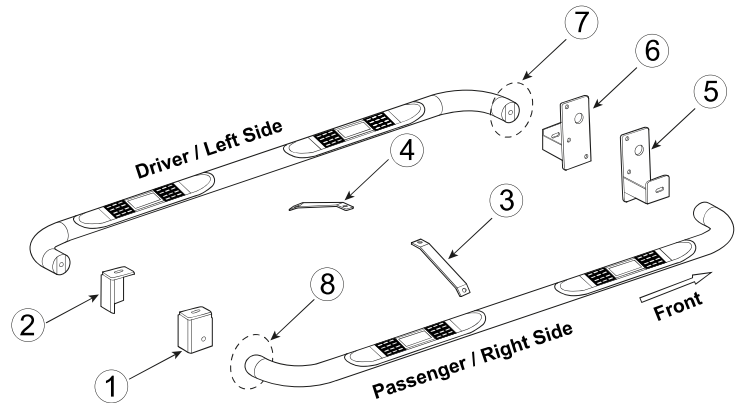
Attach rear bracket to rear bolt plate with 3/8" nuts, flat washers, and lock washers.

PARTS IDENTIFICATION GUIDE

Driver Side tube taped in "Red" Color. Passenger Side tube taped in "Blue" Color.

No.	Parts Identification
1	Passenger / Right 'Rear' Bracket marked "RR"
2	Driver / Left 'Rear' Bracket marked "RL"
3	Passenger / Right 'Center' Bracket marked "CR"
4	Driver / Left 'Center' Bracket marked "CL"
5	Passenger / Right 'Front' Bracket marked "FR"
6	Driver / Left 'Front' Bracket marked "FL"
7	'Left' marked "L"
8	'Right' marked "R"

- Note:**
- This guide is to identify the parts and not a reference for part count.
 - Product / Bracket image is for representative purpose only.
 - Actual design may vary based on application.
 - Refer Parts List for Hardware.



PRODUCT CARE

- Periodically check the product to ensure all fasteners are tight and components are intact.
- Regular waxing is recommended to protect the finish of the product.
- **Use ONLY Non-Abrasive automotive wax.** Use of any soap, polish or wax that contains an abrasive is detrimental and can scratch the finish leading to corrosion.
- Aluminum polish may be used to polish small scratches and scuffs for **Stainless Steel finish.**
- Mild soap may be used to clean the product for both **Stainless Steel and Black finish.**

FAQ's

1. **Hardware's are not of correct size.**
In GMC / Chevrolet truck model 2006 & up, customer needs to reuse the factory body bolts to install the bracket. If your vehicle is not GMC / Chevrolet 2006 & up, ensure that holes are not partially covered with any plastic grommet or rust? If it is, remove the plastic grommet & rust from the thread holes & re-try the installation.
2. **Mounting Bracket are not getting Installed properly.**
In some cases Illustration images shown in Installation manual may not be the exactly same as per actual vehicle images ,also if Driver / Passenger side mounting brackets are very identical in the design, suggest referring Parts Identification guide to avoid fitment issue.
3. **Products are thumping / rattling after installation.**
Ensure that all required mounting brackets / hardware's are installed & tighten correctly. Suggest using white lithium / regular grease between the metal to metal contact surfaces.
4. **Side Bar is not aligning with vehicle / Step Pads are not aligning with vehicle doors.**
Side bar may be interchanged or mounting brackets are not installed at the correct position in the vehicle. Refer Parts identification guide.
5. **Missing / Excess Hardware.**
Recheck hardware count as per the part list.
6. **Product not installing properly.**
Ensure make model year, cab length and bed size of your vehicle is listed in the application. All installation steps are followed correctly.