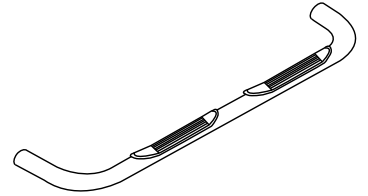




# 3" Side Bar

Part No. 1130301041/3

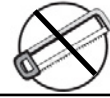


Fits: 2004 – 2008

Ford F150 Standard Cab



30-60 min



Cutting Not Required



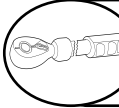
Drilling Not Required



REMOVE CONTENTS FROM BOX. VERIFY ALL PARTS ARE PRESENT.



READ INSTRUCTIONS CAREFULLY BEFORE STARTING INSTALLATION.



DO NOT OVER TORQUE. STANDARD OPERATING LOAD FOR TIGHTEN BODY MOUNT NUTS & BOLTS VARIES FROM 45 TO 65 FOOT POUND.

### PARTS LIST:

Qty	Part Description	Qty	Part Description
1 Set	Side Bar	8	3/8"-16 Clip Nut Long
1 Set	Front Bracket	16	3/8"-16 x 1 1/4" Hex Head Bolt
1 Set	Rear Bracket	16	3/8" Lock Washer
4	1/2"-13 x 1 3/4" Hex Head Bolt	24	3/8" Flat Washer
2	1/2"-13 Hex Nut	8	3/8"-16 Hex Nut
6	1/2" Flat Washer	2	1/2"-13 x 1 1/2" "T" Bolt plate
6	1/2" Lock Washer		

DRIVER (LEFT)FRONT	DRIVER(LEFT) REAR	PASSENGER (RIGHT)REAR	PASSENGER(RIGHT) FRONT

### INSTALLATION PROCEDURE

**⚠ IMPORTANT:** A magnetic pick up tool is recommended to assist with the installation.

1. Remove the end caps on the side bars before beginning installation.
2. Remove black rubber plugs and any tape on inside rocker panel that line up with bracket installation.
3. Install driver's side rear mounting bracket by placing the bolt plate through large hole in body so it comes up from behind the small hole as shown in figures #1a and #1b. NOTE: You may need to tape the bolt plate into position with duct tape so that it will stay there while you slide on the bracket. Install 3/8" clip nuts as shown in figure #2. Position rear bracket with downward sloping end towards rear of vehicle. Attach bracket to bolt plate with 1/2" flat washer, 1/2" lock washer, and 1/2" nut as shown in figure #3. Next, attach bracket to rocker panel. with 3/8" inch bolts, 3/8" flat washers, 3/8" lock washers, and 3/8" hex nuts as shown in figure #3. Attach bracket to clip nuts as shown in figure #2 and #3 using 3/8" bolts, flat and lock washers. Assemble finger tight only.
4. Install driver's side front mounting bracket same as rear only without the bolt plate. Also, install with the downward sloping end facing front of vehicle. Refer to pictures for reference. Again, assemble finger tight.

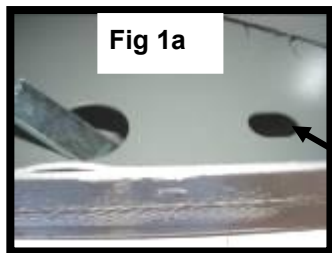
5. Place step bar tube up to front and rear brackets and fasten with  $\frac{1}{2}$ " x  $1 \frac{1}{2}$ " hex head bolts,  $\frac{1}{2}$ " flat washers, and  $\frac{1}{2}$ " lock washers. Finger tight only.
6. After all mounting points are in place, tighten all bracket bolts accordingly. Next tighten side bar bolts. Recheck bolts periodically.



**Driver Side Rear Mounting Bracket**



**Passenger Side Rear Mounting Bracket**



**Fig 1a**

Insert bolt plate through large hole so bolt sticks out of small hole from inside out.

Small Hole



**Fig 1**

$\frac{1}{2}$ " Bolt Plate

**Figure #1a & #1b**

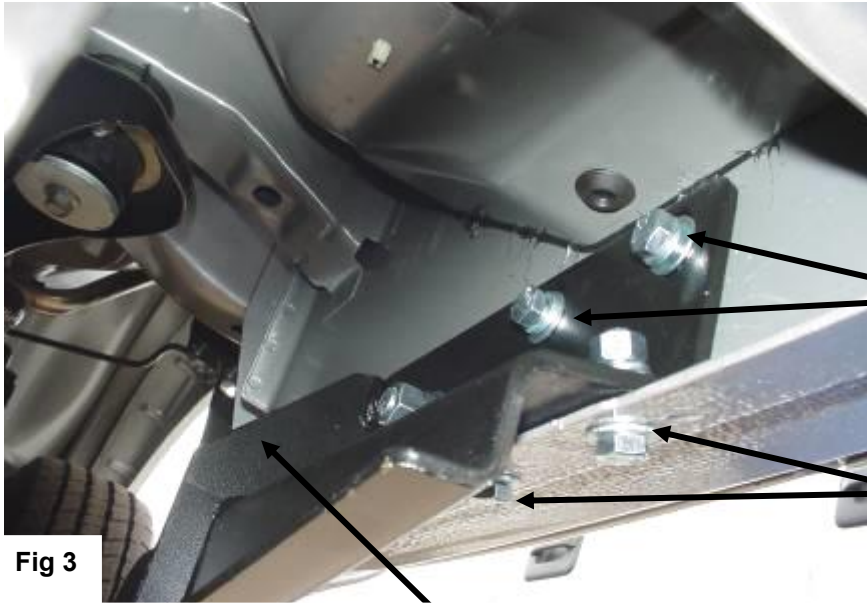
Rear Driver's side bolt plate installation



**Fig 2**

**Figure #2**

Installation of  $\frac{3}{8}$ " clip nuts



**Figure #3**

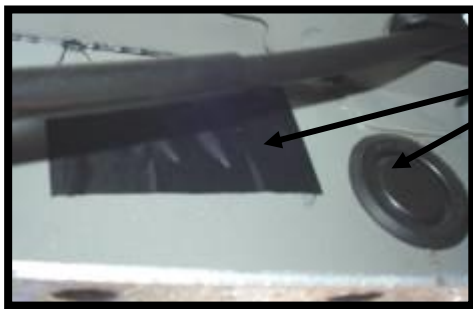
Rear Driver's Side Bracket installation

Attach to 3/8" Clip Nuts

Attach through existing holes in rocker panel edge with 3/8" bolts, lock washers, flat washers, and nuts

**Fig 3**

Attach to rear bolt plate with 1/2" nut, flat washer, and lock washer

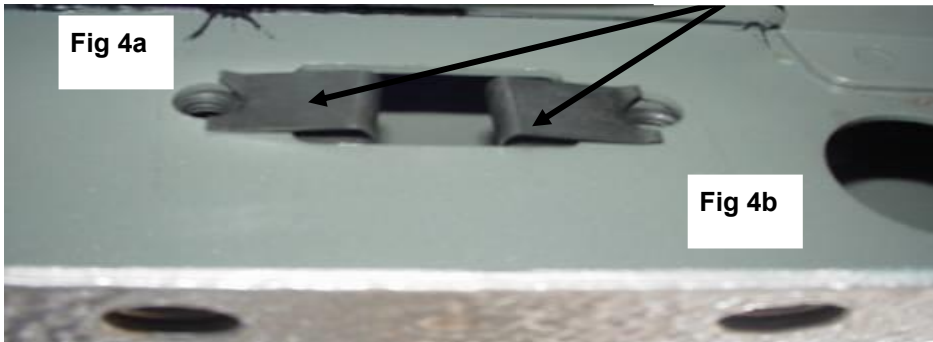


Remove tape and rubber plug

**Figure #4a & #4b**

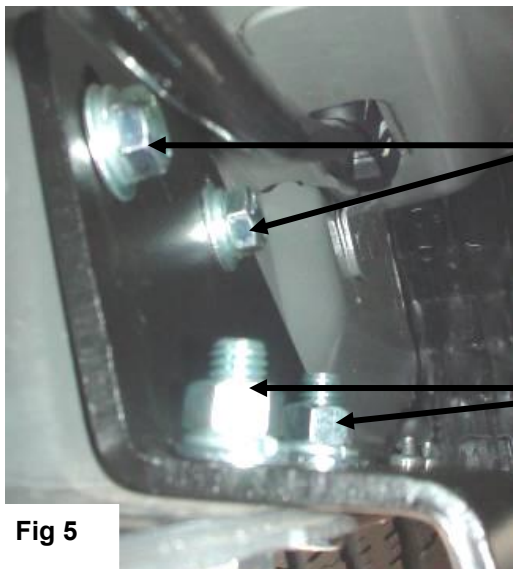
Front Driver's side bracket installation

Install 3/8" clip nuts



**Fig 4a**

**Fig 4b**



**Figure #5**

Front Driver's side bracket installation

Attach to 3/8" Clip Nuts

Attach through existing holes in rocker panel edge with 3/8" bolts, lock washers, flat washers, and nuts.

**Fig 5**

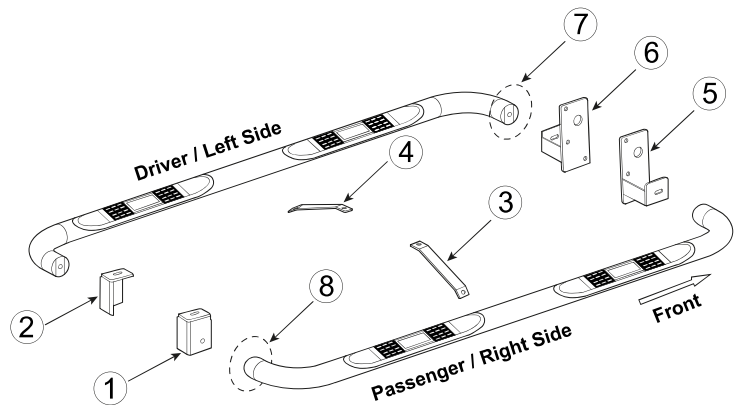
## PARTS IDENTIFICATION GUIDE

*Driver Side tube taped in "Red" Color. Passenger Side tube taped in "Blue" Color.*

No.	Parts Identification
1	Passenger / Right 'Rear' Bracket marked "RR"
2	Driver / Left 'Rear' Bracket marked "RL"
3	Passenger / Right 'Center' Bracket marked "CR"
4	Driver / Left 'Center' Bracket marked "CL"
5	Passenger / Right 'Front' Bracket marked "FR"
6	Driver / Left 'Front' Bracket marked "FL"
7	'Left' marked "L"
8	'Right' marked "R"

**Note:**

- This guide is to identify the parts and not a reference for part count.
- Product / Bracket image is for representative purpose only.
- Actual design may vary based on application.
- Refer Parts List for Hardware.



## PRODUCT CARE

- Periodically check the product to ensure all fasteners are tight and components are intact.
- Regular waxing is recommended to protect the finish of the product.
- **Use ONLY Non-Abrasive automotive wax.** Use of any soap, polish or wax that contains an abrasive is detrimental and can scratch the finish leading to corrosion.
- Aluminum polish may be used to polish small scratches and scuffs for **Stainless Steel finish.**
- Mild soap may be used to clean the product for both **Stainless Steel and Black finish.**

## FAQ's

### 1. Hardware's are not of correct size.

*In GMC / Chevrolet truck model 2006 & up, customer needs to reuse the factory body bolts to install the bracket. If your vehicle is not GMC / Chevrolet 2006 & up, ensure that holes are not partially covered with any plastic grommet or rust? If it is, remove the plastic grommet & rust from the thread holes & re-try the installation.*

### 2. Mounting Bracket are not getting Installed properly.

*In some cases Illustration images shown in Installation manual may not be the exactly same as per actual vehicle images ,also if Driver / Passenger side mounting brackets are very identical in the design, suggest referring Parts Identification guide to avoid fitment issue.*

### 3. Products are thumping / rattling after installation.

*Ensure that all required mounting brackets / hardware's are installed & tighten correctly. Suggest using white lithium / regular grease between the metal to metal contact surfaces.*

### 4. Side Bar is not aligning with vehicle / Step Pads are not aligning with vehicle doors.

*Side bar may be interchanged or mounting brackets are not installed at the correct position in the vehicle. Refer Parts identification guide.*

### 5. Missing / Excess Hardware.

*Recheck hardware count as per the part list.*

### 6. Product not installing properly.

*Ensure make model year, cab length and bed size of your vehicle is listed in the application. All installation steps are followed correctly.*