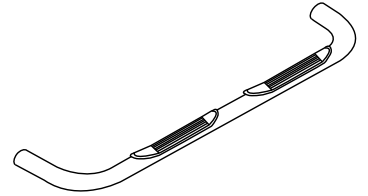




## 3" Side Bar

Part No. 1120222061/3



Fits: 2006 - 2008  
2006 - 2009

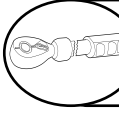
Dodge Ram 1500 Mega Cab Pickup  
Dodge 2500 / 3500 Mega Cab Pickup



REMOVE CONTENTS FROM BOX. VERIFY ALL PARTS ARE PRESENT.



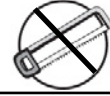
READ INSTRUCTIONS CAREFULLY BEFORE STARTING INSTALLATION.



DO NOT OVER TORQUE. STANDARD OPERATING LOAD FOR TIGHTEN BODY MOUNT NUTS & BOLTS VARIES FROM 45 TO 65 FOOT POUND.



30-60 min



Cutting Not Required



Drilling Not Required

### PARTS LIST:

Qty	Part Description	Qty	Part Description
1 Set	Side Bar	8	1/2" Lock Washer
1 Set	Front Bracket	8	3/8"-16 x 1 1/2" Bolt Plate
1 Set	Rear Bracket	8	3/8" Flat Washer
1 Set	Front Support Bracket	8	3/8" Lock Washer
1 Set	Rear Support Bracket	8	3/8"-16 Hex Nut
4	1/2"-13 x 2" Hex Head Bolt	8	3/8" Plastic Washer for Bolt Plate
4	M12-1.75 x 120mm Hex Head Bolt	4	1.88"OD Spacer Washer
8	1/2" Flat Washer		

DRIVER (LEFT) FRONT	DRIVER (LEFT) REAR	PASSENGER (RIGHT) REAR	PASSENGER (RIGHT) FRONT
DRIVER (LEFT) FRONT SUPPORT	DRIVER (LEFT) REAR SUPPORT	PASSENGER (RIGHT) REAR SUPPORT	PASSENGER (RIGHT) FRONT SUPPORT

### INSTALLATION PROCEDURE

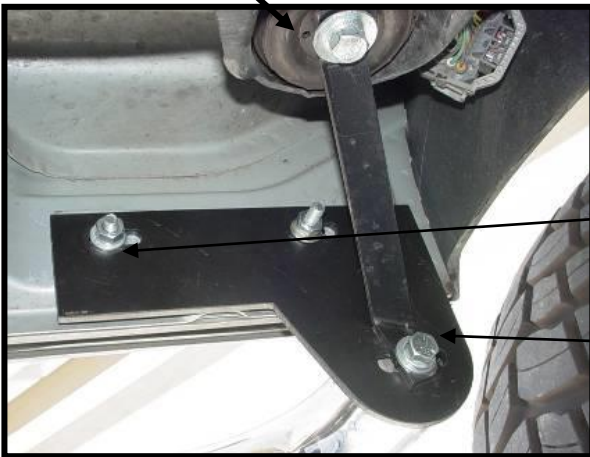
**⚠ IMPORTANT:** A magnetic pick up tool is recommended to assist with the installation.

1. Remove the end caps on the side bars before beginning installation.
2. Locate the correct Side Bar and set of Brackets referenced to the pictures. Locate the existing bolts on the correct body mounts of the chassis. Remove the four mounting bolts from the vehicle. These are M12-1.75 metric bolts that are not reused in the installation. The body mounting steel washer plate and rubber cushion are reused between the body mount and the side bar auxiliary mounting bracket.

3. Remove the tape from the inside of the rocker panel covering the holes needed to install the front and rear main brackets. Insert 3/8" bolt plates into the holes and hand tighten front and rear brackets to rocker panel with 3/8" flat washers, 3/8" lock washers, and 3/8" hex nuts. Refer to pictures. Do not tighten.
4. Install the M12x1.75x120mm Hex head bolts; 1/2" lock washer and 1/2" flat washer up through the hole in the auxiliary mounting brackets and the body mounts washer/cushion as shown. Do not tighten.
5. Next, attach the sidebars to the main brackets and the auxiliary brackets with the 1/2"-13 x 2.00" hex head bolts, 1/2" flat washers, and the 1/2" lock washers.
6. Tighten body mount bolts. Align side bars and tighten all 3/8" bolts. Next tighten side bar bolts. Tighten 1/2" bolts to 65 ft. lbs. and 3/8" hardware to 35 ft. lbs.
7. Retighten bolts and nuts periodically.

*Attach front and rear auxiliary brackets to body mounts with M12-1.75x120mm Hex Head Bolt, 1/2" flat washer, and 1/2" lock washer.*

**Driver's Side Front Installation Shown**



Attach sidebar to main bracket and auxiliary Bracket with 1/2"-13 x 1 1/2" hex head bolt, 1/2" flat Washer and 1/2" lock washer.

Attach front bracket to inside of rocker panel using (2) 3/8" bolt plates, (2) 3/8" flat washers, (2) 3/8"lock washers, and (2) 3/8" hex nuts.



Attach rear bracket to inside of rocker panel using (2) 3/8" bolt plates, (2) 3/8" flat washers, (2) 3/8"lock washers, and (2) 3/8" hex nuts.

Attach sidebar to rear main bracket and auxiliary bracket with 1/2"-13 x 1 1/2" hex head bolt, 1/2" flat washer, and 1/2" lock washer.

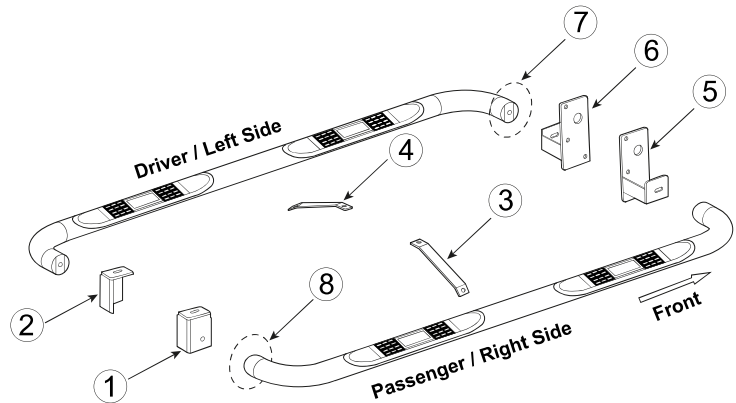
## PARTS IDENTIFICATION GUIDE

*Driver Side tube taped in "Red" Color. Passenger Side tube taped in "Blue" Color.*

No.	Parts Identification
1	Passenger / Right 'Rear' Bracket marked "RR"
2	Driver / Left 'Rear' Bracket marked "RL"
3	Passenger / Right 'Center' Bracket marked "CR"
4	Driver / Left 'Center' Bracket marked "CL"
5	Passenger / Right 'Front' Bracket marked "FR"
6	Driver / Left 'Front' Bracket marked "FL"
7	'Left' marked "L"
8	'Right' marked "R"

**Note:**

- This guide is to identify the parts and not a reference for part count.
- Product / Bracket image is for representative purpose only.
- Actual design may vary based on application.
- Refer Parts List for Hardware.



## PRODUCT CARE

- Periodically check the product to ensure all fasteners are tight and components are intact.
- Regular waxing is recommended to protect the finish of the product.
- **Use ONLY Non-Abrasive automotive wax.** Use of any soap, polish or wax that contains an abrasive is detrimental and can scratch the finish leading to corrosion.
- Aluminum polish may be used to polish small scratches and scuffs for **Stainless Steel finish.**
- Mild soap may be used to clean the product for both **Stainless Steel and Black finish.**

## FAQ's

### 1. Hardware's are not of correct size.

*In GMC / Chevrolet truck model 2006 & up, customer needs to reuse the factory body bolts to install the bracket. If your vehicle is not GMC / Chevrolet 2006 & up, ensure that holes are not partially covered with any plastic grommet or rust? If it is, remove the plastic grommet & rust from the thread holes & re-try the installation.*

### 2. Mounting Bracket are not getting Installed properly.

*In some cases Illustration images shown in Installation manual may not be the exactly same as per actual vehicle images ,also if Driver / Passenger side mounting brackets are very identical in the design, suggest referring Parts Identification guide to avoid fitment issue.*

### 3. Products are thumping / rattling after installation.

*Ensure that all required mounting brackets / hardware's are installed & tighten correctly. Suggest using white lithium / regular grease between the metal to metal contact surfaces.*

### 4. Side Bar is not aligning with vehicle / Step Pads are not aligning with vehicle doors.

*Side bar may be interchanged or mounting brackets are not installed at the correct position in the vehicle. Refer Parts identification guide.*

### 5. Missing / Excess Hardware.

*Recheck hardware count as per the part list.*

### 6. Product not installing properly.

*Ensure make model year, cab length and bed size of your vehicle is listed in the application. All installation steps are followed correctly.*