

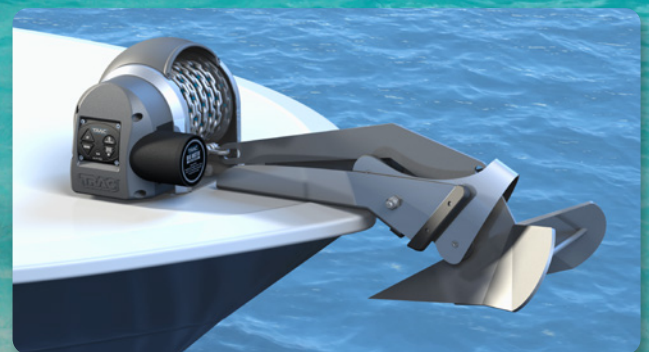
TRAC[®]

CAMCO
A CAMCO BRAND

OUTDOOR PRODUCTS



- ▶ Electric Anchor Winches
- ▶ Electric Trailer Winches
- ▶ Line Haulers
- ▶ Pumps
- ▶ Electrical Items
- ▶ Fluid Extractors

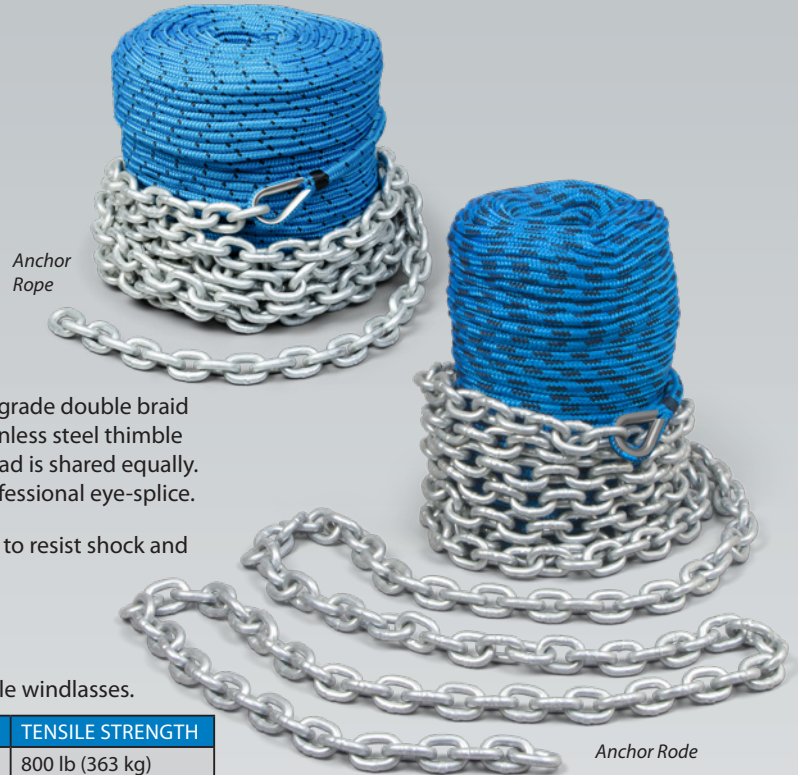




Anchor Rope & Rode

TRAC rope and chain combinations are made of premium windlass grade double braid nylon rope for superior flexibility and reduced twisting and 316 stainless steel thimble spliced core (inner braid) to cover (outer braid) which assures the load is shared equally. To assure there will be no slippage, nylon whipping finishes the professional eye-splice.

- ▶ Full nylon double braid anchor rope delivers superior elasticity to resist shock and sustain anchor hold.
- ▶ Greater abrasion resistance compared to other rope fibers.
- ▶ G43 Galvanized Short-link Marine Chain
- ▶ Designed for use with TRAC brand and other drum winches.
- ▶ Eye thimble can be removed for compatibility with capstan style windlasses.



ITEM #	DESCRIPTION	OUTLET	CHAIN	TENSILE STRENGTH	
69080	T10118	Anchor Rope	3/16" (5 mm) x 100'	-	800 lb (363 kg)
69082	T10212	Anchor Rode 200/15	1/4" (6 mm) x 200'	15'	1900 lb (862 kg)
69083	T10232	Anchor Rode 200/20	9/32" (7 mm) x 200'	20'	2400 lb (1089 kg)
69084	T10242	Anchor Rode 300/20	5/16" (8 mm) x 300'	20'	2900 lb (1315 kg)

Trailer Winch Strap & SuperRope

The new TRAC trailer winches offer a universal spool so if a cable does not fit the application, the TRAC Strap or SuperRope provide additional options to consider.

20' Synthetic Strap

- ▶ Designed for use with the TRAC 2500 or 3500 Trailer Winches
- ▶ Material: 100% Polyester
- ▶ Length: 20' (6 m)
- ▶ Width: 2-1/4" (5.7 cm)
- ▶ Working Load: 3,500 lb (1,588 kg)
- ▶ Break Strength: 5,250 lb (2,382 kg)



69120 T10186

20' Synthetic 6 mm SuperRope

- ▶ Designed for use with the TRAC 2500 or 3500 Trailer Winches
- ▶ Material: Ultra-high-molecular-weight polyethylene (UHMWPE)
- ▶ Length: 20' (6 m)
- ▶ Diameter: 1/4" (6 mm)
- ▶ Working Load: 5,700 lb (2,585 kg)
- ▶ Break Strength: 7,700 lb (3,493 kg)

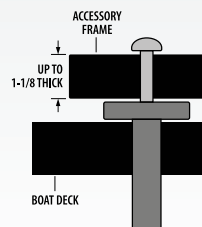


69121 T10187

Isolator Bolts

Install your anchor winch, trolling motor and other accessories from the top of your boat deck!

- ▶ Great when you can't reach under the deck!
- ▶ Protects your boat from vibrations.
- ▶ Easily installed in a 1/2" hole with Phillips head screwdriver.
- ▶ Bolts are marine-grade 316 stainless steel for the ultimate in corrosion protection in fresh or saltwater.



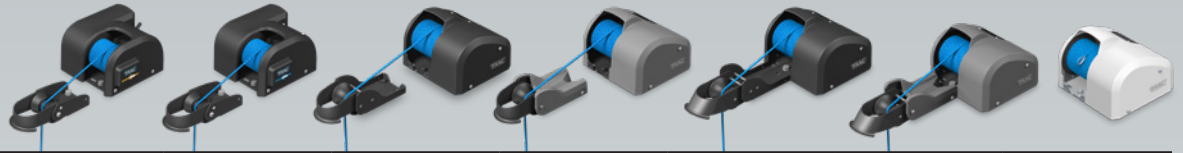
69060 T10075

4 Pack

69061 T10076

8 Pack

Electric Anchor Winch Selection Guide



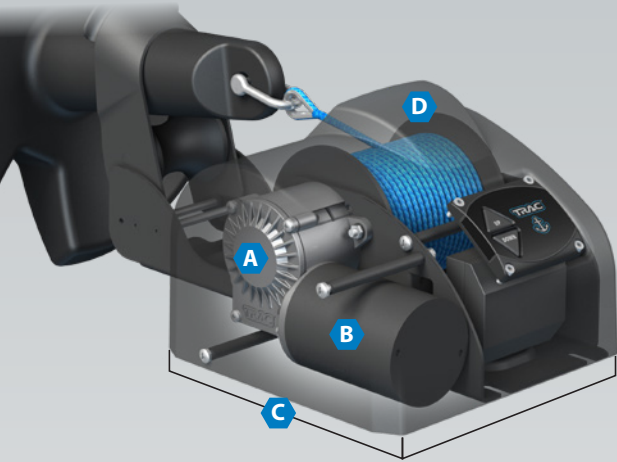
All Models Include Line

	Anchor Zone 20	Strike Zone 25™ AutoDeploy	Fisherman 25®	Angler 30™ AutoDeploy	Pontoon 35®	Deckboat 40™ AutoDeploy	Seaside 40AD™ AutoDeploy
Camco # TRAC #	69000 T10098	69001 T10100	69002 T10108-G3	69004 T10208-G3	69003 T10109-G3	69005 T10219-G3	69020 T10220-G3
Suggested Boat	Up to 16'	Up to 18'	Up to 20'	Up to 20'	Up to 24'	Up to 24'	Up to 24'
Rope Capacity	4 mm x 100 ft	4 mm x 100 ft	5 mm x 100 ft 6 mm x 100 ft	5 mm x 100 ft 6 mm x 90 ft	5 mm x 100 ft 6 mm x 90 ft	5 mm x 100 ft 6 mm x 90 ft	5 mm x 100 ft 6 mm x 90 ft
Anchor Deployment	Power Down	Auto Deploy	Power Down	Auto Deploy	Power Down	Auto Deploy	Auto Deploy
Max Rode Weight	20 lb (9 kg)	25 lb (11 kg)	25 lb (11 kg)	30 lb (14 kg)	35 lb (16 kg)	40 lb (18 kg)	40 lb (18 kg)
Rope Speed UP	60 FPM	60 FPM	70 FPM	70 FPM	70 FPM	70 FPM	70 FPM
Switch Functions	Power UP/ DOWN	Power UP/ DOWN + AutoDeploy	Power UP/ DOWN	Power UP/ DOWN + AutoDeploy	Power UP/ DOWN	Power UP/ DOWN + AutoDeploy	Power UP/DOWN + AutoDeploy
Switch Type / Location	On winch	On Winch + 2nd Wired Switch	On winch	On winch + Wireless Remote for Helm	On winch	On winch + Wireless Remote for Helm	On winch + Wireless Remote for Helm
Amp Draw @ 12V	6-8 amps	8-10 amps	8-10 amps	8-10 amps	10-12 amps	10-12 amps	10-12 amps
Anchor Davit/Roller	Included	Included	Included	Included	Integrated	Integrated	Not Included
Gear Materials	Bronze w/Steel Core	Bronze w/Steel Core	Bronze w/Steel Core	Bronze w/Steel Core	Bronze w/Steel Core	Bronze w/Steel Core	Bronze w/Steel Core
Winch Dimensions (L x W x H)	8" x 7 1/2" x 5"	8" x 7 1/2" x 5"	9" x 9" x 6"	9" x 9" x 6"	18" x 9" x 6"	18" x 9" x 6"	18" x 9" x 6"
Deck Space Used (L x W)	11 x 7 1/2"	11 x 7 1/2"	16" x 9"	16" x 9"	18" x 9"	18" x 9"	18" x 9"



Lakeside Electric Anchor Winches

TRAC Electric Anchor Winches offer simple, smooth operation and provide excellent holding power. Winches feature high-efficiency 12-volt DC all-steel gear motors that use less battery power than other makes.

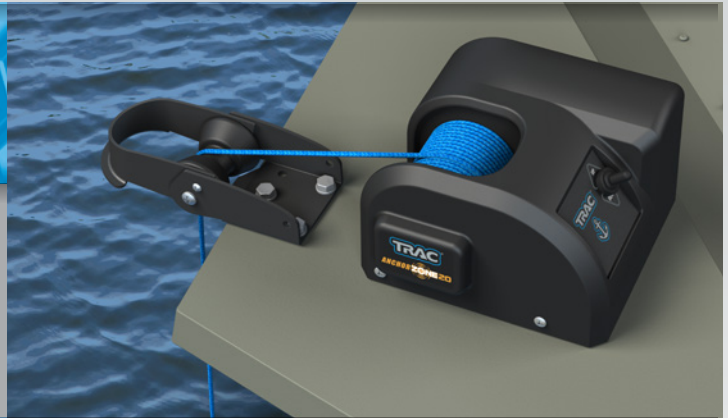
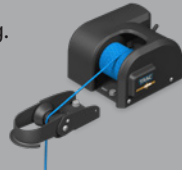


Improved third generation (G3) designs:

- A** New die-cast aluminum gearbox
- B** New 68 mm heavy-duty DC motor
- C** New smaller footprint: Uses less than 1 square foot of deck space
- D** New sleek exterior case designs and as small as 9" x 9"

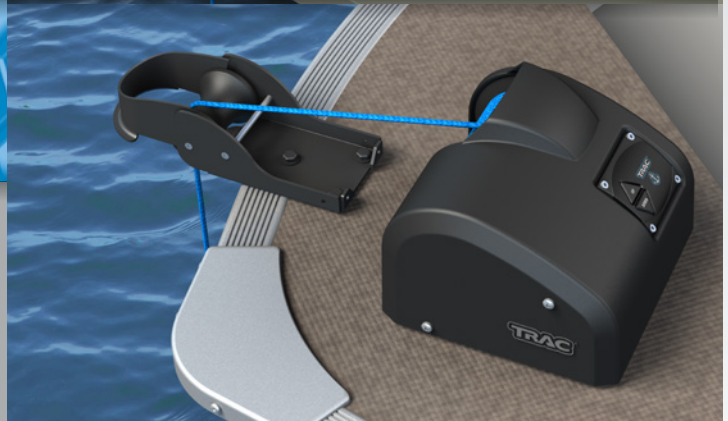
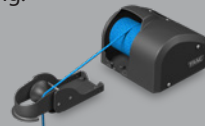
Anchor Zone 20®

- ▶ Maximum rode weight 20 lb.
- ▶ Power up/down with anti-reverse internal clutch to prevent free-spooling. 60 fpm no-load rope retrieval speed.
- ▶ Separated davit
69000 T10098



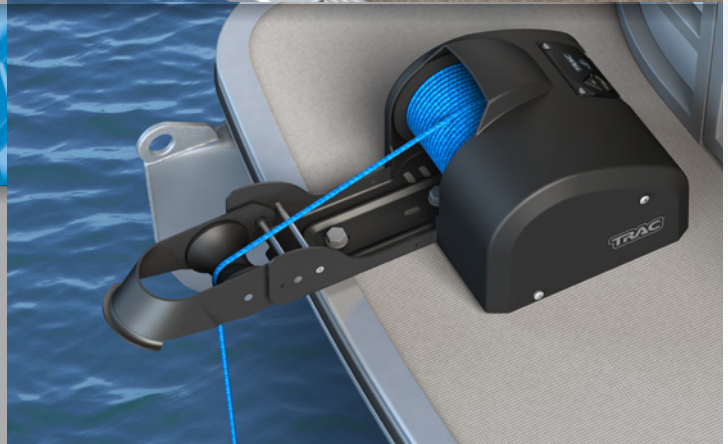
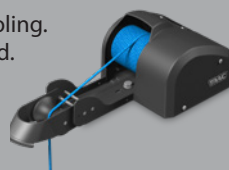
Fisherman 25®

- ▶ Maximum rode weight 25 lb.
- ▶ Power up/down with anti-reverse internal clutch to prevent free-spooling. 60 fpm no-load rope retrieval speed.
- ▶ Separated davit
69002 T10108-G3



Pontoon 35®

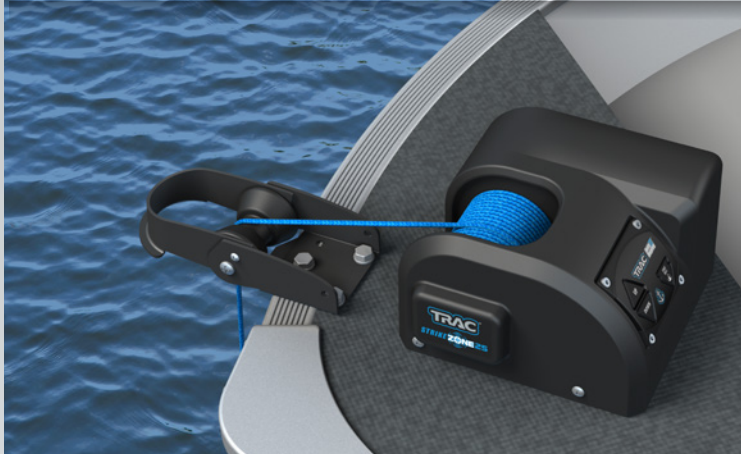
- ▶ Maximum rode weight 35 lb.
- ▶ Power up/down with anti-reverse internal clutch to prevent free-spooling. 60 fpm no-load rope retrieval speed.
- ▶ Integrated Davit
69003 T10109-G3





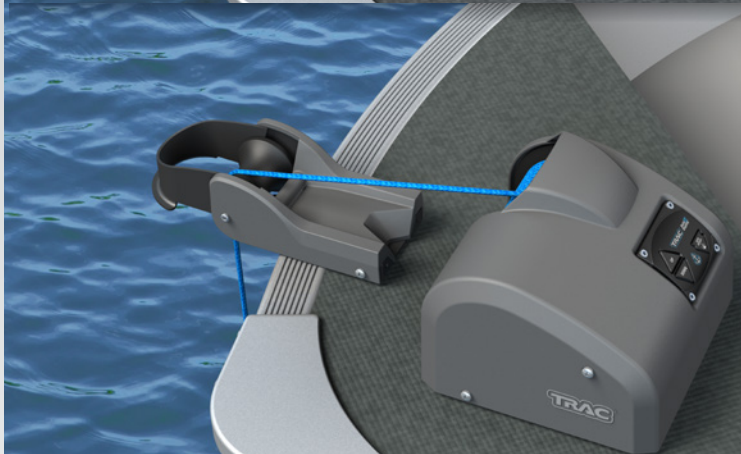
All Lakeside Anchor Winch Models Include:

- ▶ 100' of 0.20" pre-wound double braid anchor rope
- ▶ Separate or integrated anchor roller
- ▶ Circuit breaker
- ▶ Sealed membrane UP/DOWN switch
- ▶ 16' of 14-gage marine-grade battery wire
- ▶ Anchor safety chain
- ▶ Assembly hardware and instructions
- ▶ 1 year warranty



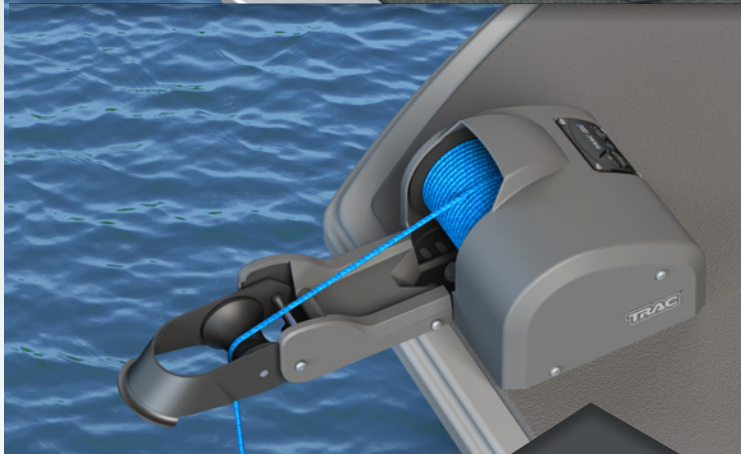
Strike Zone 25™ AutoDeploy

- ▶ 3 button operation –
UP / DOWN / AUTO DEPLOY
 - ▶ 25 lb maximum rode weight
 - ▶ Wireless remote control included
 - ▶ Separated davit
- 69001 T10100



Angler 30™ AutoDeploy

- ▶ 3 button operation –
UP / DOWN / AUTO DEPLOY
 - ▶ Attached or separated davit
 - ▶ 30 lb maximum rode weight
 - ▶ Wireless remote control included
 - ▶ Separated davit
- 69004 T10208-G3



Deckboat 40™ AutoDeploy

- ▶ 3 button operation –
UP / DOWN / AUTO DEPLOY
 - ▶ Integrated davit
 - ▶ 40 lb maximum rode weight
 - ▶ Wireless remote control included
- 69005 T10219-G3



Auto Deploy

Deploy the anchor with a single touch

Push-button AutoDeploy automatically lowers the anchor, releasing rope until the anchor touches bottom. When slack in the rope becomes tight, rope is automatically released in short lengths or can be locked with the touch of any switch or remote button. Automatically releases the rope needed to hold the boat in position. When the anchor stops letting rope out, press the "lock" or any other switch button. Great for fishing to allow a "controlled" drift.

Wireless Remote Kits

Allows push-button Anchor Winch operation from any location.

The wireless remote clips into a handy storage bracket that can be mounted on your helm or anywhere you wish. You have the option of using the remote anywhere in the boat, or using it like a dash-mounted switch. Convenient!

For use with G2 and G3 Fisherman 25 and Pontoon 35 Electric Anchor Winches.

- ▶ **69041 T10116** Use with **G2** TRAC Fisherman 25 (T10108-25) & TRAC Pontoon 35 (T10109-25)
- ▶ **69044 T10216** Use with **G3** TRAC Fisherman 25 (69002 T10108-G3) & 25 Pontoon 35 (69003 T10109-G3)



2nd Switch Kits

Add a convenient second Anchor Winch switch.

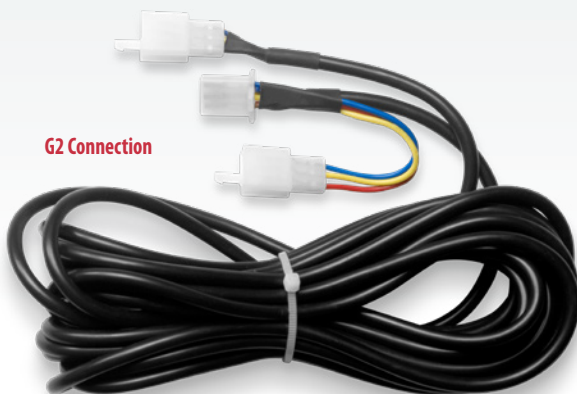
Includes sealed switch, bezel faceplate, cables with connectors and 4 screws – everything needed to install an auxiliary switch in the location of your choice.

For use with TRAC Electric Anchor Winches.

- ▶ **69040 T10115** Use with **G2** TRAC Fisherman 25 (T10108-25) & TRAC Pontoon 35 (T10109-25)
- ▶ **69043 T10215-G3** Use with **G3** TRAC Fisherman 25 (69002 T10108-G3) & 25 Pontoon 35 (69003 T10109-G3)

For use with TRAC Auto-Deploy Electric Winches

- ▶ **69042 T10117** Use with **G2** Angler 30 (T10208-AD) and Gen 2 Deckboat 40 (T10219-AD)
- ▶ **69045 T10217-G3** Use with **G3** Angler 30 (69004 T10208-G3) and Gen 2 Deckboat 40 (69005 T10219-G3)



G2 Connection



G3 Connection

Line Hauler/Pot Puller

This powerful, recreational line hauler runs on 12V power with a lift capacity of 110 lb. Low amp usage but plenty of might to pull 1-3 prawn traps or 1 crab trap. Runs quiet and stores easily. Added corrosion protection so it's ready for the harsh salt water environment. Fits on Scotty downrigger mount.

69280 T10250

Features:

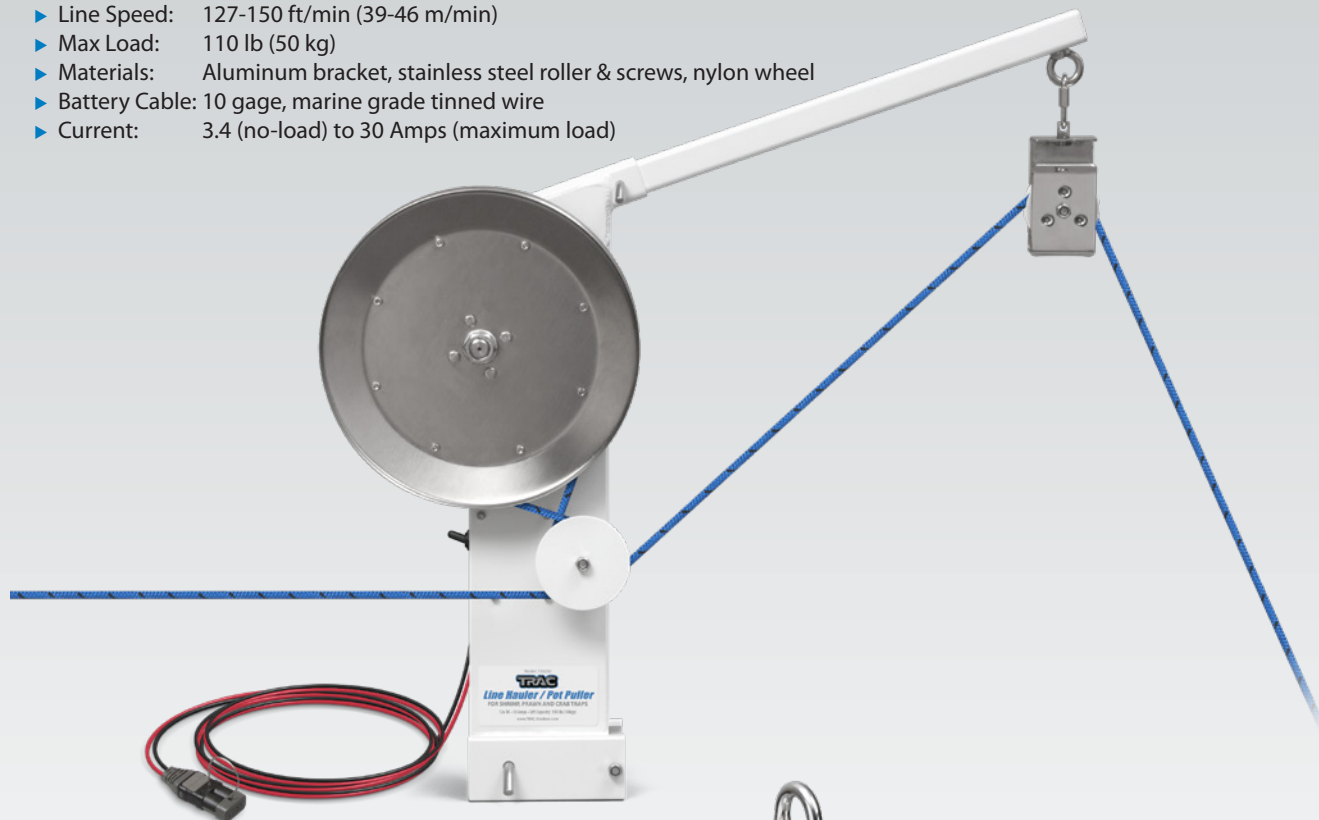
- ▶ Easy, quick mounting and storage
- ▶ Accommodates 3/16" – 5/16" (about 5-8 mm) line size.
- ▶ Tough epoxy powder-coated aluminum frame resists corrosion.
- ▶ Heavy-duty aluminum frame and boom.
- ▶ Boom folds down to stow in frame.
- ▶ Overload protection
- ▶ 1 year warranty

Specifications:

- ▶ Line Speed: 127-150 ft/min (39-46 m/min)
- ▶ Max Load: 110 lb (50 kg)
- ▶ Materials: Aluminum bracket, stainless steel roller & screws, nylon wheel
- ▶ Battery Cable: 10 gage, marine grade tinned wire
- ▶ Current: 3.4 (no-load) to 30 Amps (maximum load)



Stowed Position



TRAC Pot Puller Adaptor Plate

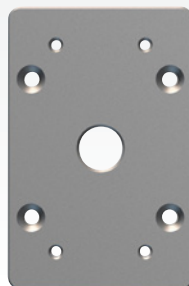
Designed to allow a TRAC Pot Puller or Scotty brand product to be installed on a Cannon brand mounting base. Machined from aircraft aluminum, sand blasted, and anodized gunmetal gray. Stainless steel hardware included.

69290 T10199

Mounting Plate for Models: T10250 TRAC Pot Puller/Line Hauler

Compatible with:

- ▶ **69073 T10194** 90° Transom and Side Mount
- ▶ **69074 T10195** 12° Transom and Side Mount



Open Block Swivel Pulley

This 316 stainless steel multi-functional pulley is a must have for hauling line and pulling traps. The open block design allows quick rope work. The swivel allows for multiple angles of use.

69291 T10252

- ▶ Designed for use with the TRAC Line Hauler or other rigging needs.
- ▶ Maximum Load Capacity: 800 lb (363 kg)

Vehicle Wiring Kit

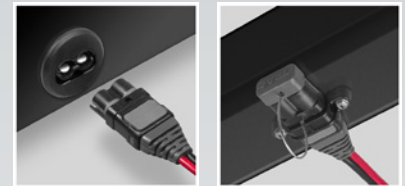
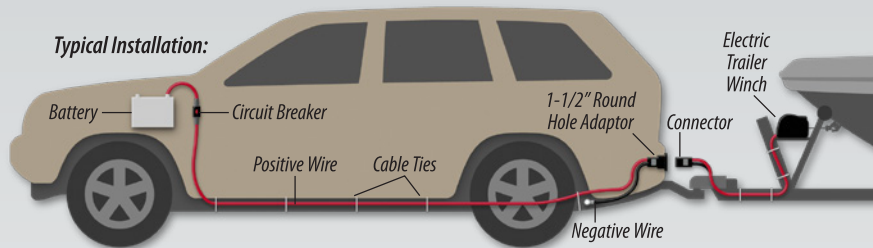
Everything you need to wire your vehicle for high-current (60 amp) 12V power.

Use this 12V high current power connection for trailer winch, portable winch, and any other 12V device up to 60 amps.

Kit includes:

- ▶ TRAC's 12V high-current quick-connect system:
 - 12V connector for rear of vehicle
 - Adaptor for optional installation in 1-1/2" round hole
 - U-bracket for optional installation on flat surface
 - 12V connector for trailer winch or any other 12V device
- ▶ 25' of heavy 8-gage AWG tin-plated marine-grade positive (red) battery wire
- ▶ 5' of heavy 8-gage AWG tin-plated marine-grade negative (black) battery wire
- ▶ Corrosion resistant self-tapping grounding bolt to attach negative wire to vehicle frame
- ▶ High-current 60 amp manual resetting circuit breaker
- ▶ 10 tie-wraps to secure wires to vehicle

69140 T10135



1-1/2" round hole adaptor included

U-bracket included

Trolling Motor Rigging Kit

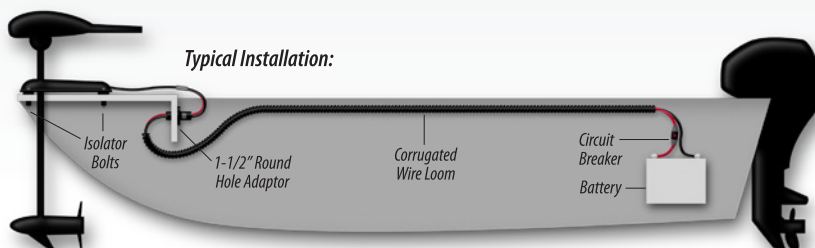
Everything you need to wire your boat for high-current (60 amp) 12V/24V/36V power.

Use this high current power connection for all boats to power up to 36V trolling motors, winches, and any other 12v, 24V or 36V device up to 60 amps.

Kit includes:

- ▶ TRAC's high-current quick-connect system:
 - Two quick-connect plugs - one for boat/battery and one for trolling motor or other device, 1 1/2" round hole adaptor, and U-bracket
- ▶ 30' of heavy 8-gage AWG tin-plated marine-grade battery wire
- ▶ High-current 60 amp manual resetting circuit breaker
- ▶ Two 14" 8-gage cross-over wire for 24V and 36V systems
- ▶ Four isolator bolts to install trolling motor or other device
- ▶ 28' of corrugated wire loom
- ▶ Heat-shrink terminations

69440 T10141



Sealed Thermal Circuit Breaker

- ▶ 60 amp
- ▶ High current
- ▶ Manual resetting with visible lever
- ▶ Water resistant seal
- ▶ Weatherproof
- ▶ 3.95" in length



69420 T10162

Digital Circuit Breakers

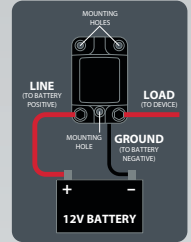
Innovative solid state design eliminates the inaccuracy of thermal breakers. It also allows for more control over your circuits with selectable current (amperage) limit and more flexibility with selectable manual- or automatic-reset modes.

The TRAC micro-processor monitors voltage and current in real time to automatically protect your 12-volt circuit from damage caused by overload or short circuit.

If TRAC Digital Circuit Breaker detects a fault condition, the current flow will be interrupted at a very precise and user selectable amperage.

FEATURES:

- ▶ User selectable current (amperage) limit
- ▶ User selectable Manual RESET, Auto-RESET, or OFF modes.
- ▶ Includes Surge Compensation to monitor amperage and allow short duration current surges common with electric motors.
- ▶ Illuminated with high-brightness LEDs for daylight viewing.
- ▶ Circuit interrupt LED will flash intermittently when the circuit is broken.
- ▶ Completely sealed and waterproof



69401 T10170
w/ Digital Display



69402 T10171
w/ Digital Display



69403 T10172
w/ Digital Display

10-25 Amp Models:

- ▶ Circuit protection in range: 10/15/20/25 amps
- ▶ Dimensions (HxWxD): 3.6" (91 mm) x 2.3" (59 mm) x 2.0" (50 mm)

30-60 Amp Models:

- ▶ Circuit protection in range: 30/40/50/60 amps
- ▶ Dimensions (HxWxD): 3.6" (91 mm) x 2.3" (59 mm) x 2.0" (50 mm)

100-175 Amp Model:

- ▶ Circuit protection in range: 100/125/150/175 amps
- ▶ Dimensions (HxWxD): 5.8" (148 mm) x 5" (127 mm) x 3.3" (50 mm)

High-Current Connector Kit

Upgrade your Trolling Motor Connectors to high-current 12V or 24V power.

Kit includes:

- ▶ 2 quick-connect plugs - one for boat/battery and one for trolling motor or other device.
- ▶ 1½" round hole adaptor
- ▶ U-bracket
- ▶ Heavy-gage AWG marine-grade tin-plated copper pig-tail wires
- ▶ Heat shrink butt-splices

69441 T10136

8 Gage

For 60 amp
12/24/36V power



High-Current Plugs

For high-current 12V or 24V power.

- ▶ Quick-connect plug
- ▶ Heavy-gage AWG marine-grade tin-plated copper pig-tail wires
- ▶ Heat shrink butt-splices

69442 T10138

8 Gage

For 60 amp
12/24/36V power



69443 T10139

10 Gage

For 40 amp
12V or 24V power

Bilge Pumps

Submersible Bilge and Thru-Hull Pumps.

Self-priming, 12V centrifugal pumps. Ideal for all watercraft. Designed for easy installation and retrofitting. 800 GPH 3/4" outlet and 1100 GPH 1-1/8" outlets in one package!

- ▶ Cartridge style pump head
- ▶ Pump body accepts both 3/4" and 1-1/8" screw-on outlets creating 2 pumps in 1.
- ▶ Universal strainer base is connection-compatible: fits Attwood/Tsunami, Rule, Johnson/Mayfair cartridge pumps. Screw mounting holes match Rule and Attwood/Tsunami
- ▶ Meets ABYC, Coast Guard and ISO marine standards
- ▶ Ignition protection
- ▶ Low power draw
- ▶ Runs dry without damage
- ▶ US Patent D689,908
- ▶ 1 Year Warranty



TRAC ITEM #	DESCRIPTION	OUTLET
69300 T10003	600 GPH	3/4"
69301 T10004	800/1100 GPH	3/4" and 1-1/8"
69330 T10010	Float Switch (20 Amp)	-
69310 T10011	AUTOMATIC 600	3/4"

TRAC ITEM #	DESCRIPTION	OUTLET
69311 T10012	AUTOMATIC 800/1100 GPH	3/4" and 1-1/8"
69331 T10026	Bilge Pump Plumbing Kit	3/4"
69320 T10016	600 GPH Thru-Hull Pump	3/4"
69321 T10017	800/1100 GPH Thru-Hull Pump	3/4" and 1-1/8"

Portable Aerator

Self-priming, centrifugal pump. Ideal for coolers, buckets & baitwells.

- ▶ Powered by 3 D-cell batteries (not included)
 - ▶ Powerful spray aerates water to keep bait alive
 - ▶ Increased oxygen level keeps bait lively
 - ▶ Adjustable spray head to increase or decrease spray
 - ▶ Wide strainer base adds stability
 - ▶ Suction cup or screw mount
 - ▶ Submersible
 - ▶ Runs dry without damage
 - ▶ US Patent D689,907
- 69340 T10021



Portable Pump

Self-priming, centrifugal pump. Ideal for jon boats, utility boats, dinghies, inflatable boats and all other small watercraft.

Also great for removing fluids from many non-marine applications.

- ▶ Powered by 3 D-cell batteries (not included)
 - ▶ 250 GPH flow rate at zero head
 - ▶ 3/4" x 36" hose wraps around body for stowage
 - ▶ Wide strainer base adds stability
 - ▶ Suction cup or screw mount
 - ▶ Includes clip to attach hose to transom
 - ▶ Submersible
 - ▶ Runs dry without damage
 - ▶ Dimensions: 5" x 5" x 12"
 - ▶ US Patent D689,907
- 69341 T10023



Macerator Pump

Designed specifically for sanitation waste and fish box evacuations, this high-powered pump incorporates a high quality motor with seamless motor tube and o-ring sealed motor end frames. High-speed rotary cutter shreds waste efficiently, producing a higher discharge capacity. Design allows for direct replacement with other macerators for easy installation.

69390 T10069

- ▶ 13 GPM (49.2 LPM)
- ▶ Self-priming to 5'
- ▶ O-ring sealed motor end frames
- ▶ Heavy duty armature shaft seal
- ▶ Manual turn key with rear O-ring seal
- ▶ Innovative internal housing design
- ▶ Seamless motor tube
- ▶ Dual blade design
- ▶ Premium impeller
- ▶ Ignition protection
- ▶ 1.5" intake hose
- ▶ 12V DC

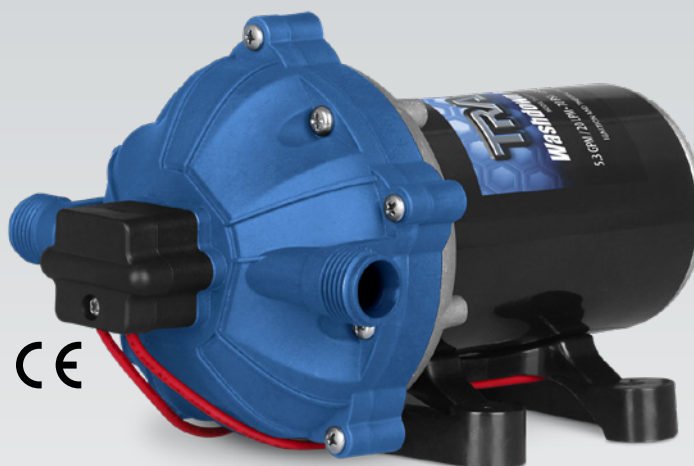


Super-Duty Washdown Pump

Self-priming, 12V diaphragm pumps with sealed, pressure switch control and vibration dampening polymer isolating mounting base. Washdown pumps are ideal for cleaning leisure boats, fish boxes, anchor chains and dinghies. Suitable for fresh and salt water. All models include filter and fittings.

69381 T10077

- ▶ 70 PSI
- ▶ 5.3 gallons/minute flow rate
- ▶ 6 amps
- ▶ Smooth operation and flow
- ▶ Quiet running
- ▶ Runs dry without damage
- ▶ Seamless motor shell
- ▶ Low power draw
- ▶ Ignition protected
- ▶ Easy quick-connect fittings
- ▶ 1 year warranty



Portable Washdown Pump Kit

Everything needed to power-wash your boat or RV in a convenient stow-and-go carrier!

This easy-to-use washing kit is built with a high pressure diaphragm pump that is self-priming, can run dry without damage and won't overheat. Just connect to a garden hose or use the supplied input hose to draw water directly from the lake, ocean or even a bucket and you are ready to wash. Includes: Fully sealed pump, adjustable spray nozzle, 6.6 ft. (2 m) input water hose with quick-connect fitting and filter, 12.3 ft (3.75 m) spray hose with quick-connect fittings and 2 cord options for 12V power – battery clips for direct battery connection and a DC power port adaptor.

69380 T10068

- ▶ Carrier size: 13.8" L x 11.3" W x 12.5" H
- ▶ 2 gallons/minute flow rate
- ▶ Suction capacity 6 ft
- ▶ 100 PSI
- ▶ 14 amps



TRAC[®]

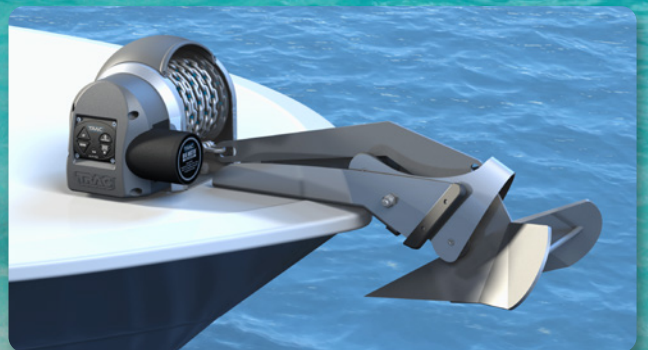
CAMCO
A CAMCO BRAND

OUTDOOR PRODUCTS



- ▶ Electric Anchor Winches
- ▶ Electric Trailer Winches
- ▶ Line Haulers
- ▶ Pumps
- ▶ Electrical Items
- ▶ Fluid Extractors

70201 #619



Learn more about boat pumps we have.