



TOUGH COUNTRY

AMERICAN VALUES FORGED IN STEEL™



OUR LINE

OUR MISSION

To encourage you drive & explore new roads, fields, and towns with family & friends with the absolute confidence that your **TOUGH COUNTRY** is the safest, best looking, and most functional component of your Truck.



 **TOUGH COUNTRY**



▶▶ Deluxe



▶▶ Traditional



▶▶ Evolution



▶▶ Apache



▶▶ Brush Guard

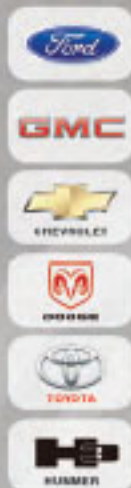
THE FRONTS

American Values Forged Into Our

DELUXE ◀◀

THE BENEFITS:

- ▶ ONLY Front Bumper on the market that gives you 4" pipe all the way around the front of your truck, from wheel to wheel
- ▶ Streamlined appearance
- ▶ Standard finish is a high gloss black industrial powder coat
- ▶ Unique "A" Frame Design
- ▶ Angular Protection Plates
- ▶ 1 1/4" light loops
- ▶ Side protection with a rigid pipe base
- ▶ Customizable Options Available (**See page 4**)
- ▶ Starts with a heavy 4" pipe base
- ▶ Frame mounted for maximum strength and protection
- ▶ No vehicle modifications are necessary to install
- ▶ Can be ordered with the universal winch box
- ▶ Most applications retain OEM tow hooks

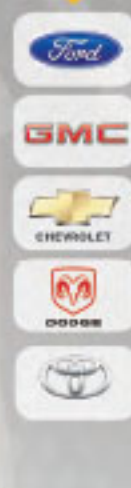


American Values Forged Into Our

TRADITIONAL ◀◀

THE BENEFITS:

- ▶ Use strong 4" Pipe Base with heavy upright push bars
- ▶ 1 1/4" Pipe Light loops for maximum protection
- ▶ "Traditional Look"
- ▶ Frame mounted
- ▶ Requires no vehicle modifications
- ▶ Well stocked inventory
- ▶ Includes 2" Receiver, Expanded Metal in grille, and sleeves for OEM Fog Lights
- ▶ Most applications retain OEM tow hooks
- ▶ Customizable Options Available (**See page 4**)
- ▶ Standard finish is a high gloss black industrial powder coat



American Values Forged Into Our **APACHE** <<

THE BENEFITS:

- ▶ Designed to be a lighter front
- ▶ Heavy 4" pipe base for maximum protection
- ▶ Sportier look
- ▶ Frame mounted with no vehicle modification
- ▶ Can be ordered with or without the grille protection bars
- ▶ Shares the same angular front protection plates as the Deluxe
- ▶ Customizable options available (See page 4)
- ▶ Can be ordered with a universal winch box
- ▶ Most applications retain OEM tow hooks
- ▶ Standard finish is a high gloss black powder coat
- ▶ Custom finish options available (See page 17)



American Values Forged Into Our **EVOLUTION** <<

THE BENEFITS:

- ▶ Streamlined aerodynamic look
- ▶ Manufactured with a heavy 10 gauge steel plate base for maximum protection
- ▶ Frame mounted with no vehicle modification necessary
- ▶ Winch ready options available
- ▶ Custom sleeves for OEM fog lights
- ▶ Standard finish is a black wrinkle industrial powder coat
- ▶ All models retail OEM tow hooks
- ▶ Custom options available (See page 4)
- ▶ Customizable finish options available (See page 17)



American Values Forged Into Our **BRUSH GUARD** <<

THE BENEFITS:

- ▶ Provides extreme protection for your front, without adding the weight of a front bumper
- ▶ Light loops that are constructed of 1 1/4" pipe, above and beyond industry standard
- ▶ Frame mounted for maximum protection
- ▶ Contours around your vehicles lights and body structure
- ▶ Covers existing bumper
- ▶ Most require no modification for installation or removal
- ▶ Standard finish is a high gloss black industrial powder coat
- ▶ Available with or without expanded metal in the grille
- ▶ Custom finish options available (See page 17)



FRONT BUMPER OPTIONS



➤➤ After Market Lights



➤➤ Body Lift Modification



➤➤ Euro Bar w-cross bar



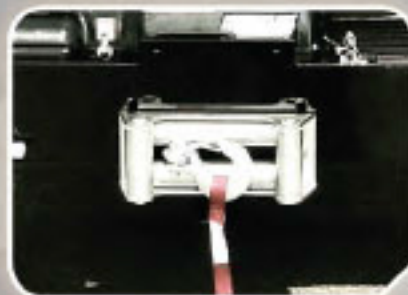
➤➤ Expanded Metal



➤➤ Flush Receiver



➤➤ Fog Lights



➤➤ Winch Mount



➤➤ Light Tabs



➤➤ Protruding Receiver



➤➤ Shackle Mount





TOUGH COUNTRY



▶▶ Deluxe



▶▶ Traditional



▶▶ Evolution



▶▶ Deluxe Dually



▶▶ Traditional Dually

THE REARS

American Values Forged Into Our

TRADITIONAL REAR ◀◀

IN SINGLE OR DUALY REAR WHEEL CONFIGURATION

- ▶ Constructed of 4" schedule 40 pipe frame 1/2" Plate Drop Box
- ▶ 8" drop; comes complete with license plate lights
- ▶ Universal mount for the factory wiring harness
- ▶ You can retain you factory receiver hitch with most of our Traditional Style 8" drop rear bumpers
- ▶ Standard finish is high gloss industrial strength powder coat
- ▶ Custom finish options available (See page 17)
- ▶ Custom options available (See page 8)

Single Rear Wheel Configuration



Dually Rear Wheel Configuration

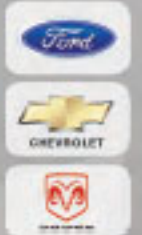


American Values Forged Into Our

EVOLUTION REAR ◀◀

THE BENEFITS:

- ▶ Modern Style Flat Plate Design
- ▶ Constructed of 10 Gauge Flat Plate Steel
- ▶ Retains Truck Factory Tow Package
- ▶ Comes complete with license plate lights Reverse or Backup Lights
- ▶ Standard finish is a Black Wrinkle industrial strength powder coat
- ▶ Built in step on both sides
- ▶ Custom finish options available (See page 17)
- ▶ Custom options available (See page 8)



TOUGH COUNTRY

American Values Forged Into Our

DELUXE REAR ◀◀

IN SINGLE OR D'UALLY REAR WHEEL CONFIGURATION

- ▶ Tough Country's founding product
- ▶ Only Rear Bumper on the market with continuous flowing schedule 40, 4" Pipe Base
- ▶ Built in Flush Mount Receiver
- ▶ Standard finish is a high gloss black industrial powder coat
- ▶ The base model deluxe rear bumper has an 8" drop, complete with license plate lights, 7 Way Mount and safety chain attachment points
- ▶ Customizable Options Available (See page 10)

NOTE: Not all accessory shanks will work with the Deluxe Rear Bumper. This bumper requires at least 5^{1/4}" of unobstructed shank from pin hole to ball mount platform or any gussets. This is to allow it to pass through the 4" pipe and be pinned on the back side of the bumper. The factory receiver must be removed to install the Deluxe Rear Bumper.



TOUGH COUNTRY

AMERICAN VALUES FORGED IN STEEL™

Single Rear Wheel Configuration



Dually Rear Wheel Configuration



REAR BUMPER OPTIONS



➡ After Market Lights



➡ Body Lift Modification



➡ Reverse Sensors



➡ Shackle Mount



➡ Ten Inch Drop





TOUGH COUNTRY



▶▶ Deluxe Step Bar



▶▶ Deluxe Dually Step Bar



▶▶ Dually Running Board



▶▶ Running Board

THE STEPS

American Values Forged Into Our

STEP BARS ◀◀

IN SINGLE OR DUALY REAR WHEEL CONFIGURATION

- ▶ Frame mounted
- ▶ Manufactured using a stout 2^{1/2}" pipe that have the end caps welded on to completely seal the bars to prevent internal rusting
- ▶ 1^{1/4}" Pipe is welded to the main bar with a Diamond Plate Step molded in to complete the loop step
- ▶ Available Cab only or Wheel-to-Wheel with third step to allow bed access
- ▶ Installs easily and bolts to pre-existing factory mounting points with no vehicle modification

Single Rear Wheel Configuration



Dually Rear Wheel Configuration



American Values Forged Into Our

RUNNING BOARDS ◀◀

IN SINGLE OR DUALY REAR WHEEL CONFIGURATION

- ▶ Solid one piece welded design
- ▶ Frame mounted
- ▶ Wheel to wheel design manufactured using a 2" pipe frame
- ▶ 12 gauge diamond plate decking
- ▶ Installs easily and bolts to pre-existing factory mounting points with no vehicle modification

Single Rear Wheel Configuration



Dually Rear Wheel Configuration





TOUGH COUNTRY



➡ Heavy Duty



➡ Louvered

HEADACHE RACKS

American Values Forged Into Our

HEAVY DUTY ◀◀

THE BENEFITS:

- ▶ Largest Frame on the Market
- ▶ Maximum Cargo Support
- ▶ Fabricated with a 2"x4" frame
- ▶ Available in many different configurations
- ▶ Protects the cab & back glass of the truck
- ▶ One piece welded construction no bolt on rails



American Values Forged Into Our

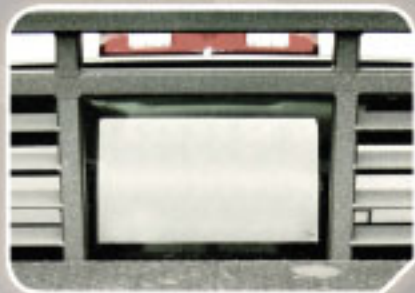
LOUVERED ◀◀

THE BENEFITS:

- ▶ Extra Cab Protection
- ▶ Added Cargo Storage
- ▶ Fabricated with a 1 1/2" x 3" tube frame
- ▶ Most protection for the cab and back glass of the truck
- ▶ Many configurations and options available



OPTIONS



▶▶ Rear Window Cut Out



▶▶ Full Bed Rails



▶▶ Lights



▶▶ Tool Box Cut Out



TOUGH COUNTRY



▶▶ Front Bumper



▶▶ Rear Bumper



▶▶ Spare Tire Carrier

JEEP JK

American Values Forged Into Our

FRONT BUMPER ◀◀

THE BENEFITS:

- ▶ Winch Ready
- ▶ Frame Mounted
- ▶ Requires no Vehicle Modifications
- ▶ 3/4" Shackle Mounts
- ▶ Sleeves for OEM Foglights
- ▶ Light Tabs for LED Lights
- ▶ Durable Black Wrinkle powder coat finish



American Values Forged Into Our

REAR BUMPER ◀◀

THE BENEFITS:

- ▶ 2" Receiver
- ▶ Pre cut for TORCH Flush Mount LEDs (Comes with light hole covers if no lights are installed.)
- ▶ Frame mounted with no vehicle modification
- ▶ 3/4" Shackle Mounts
- ▶ Tire Holder for Spare Tire is sold separately
- ▶ Durable Black Wrinkle powder coat finish



American Values Forged Into Our

TIRE CARRIER ◀◀

THE BENEFITS:

- ▶ Solid frame bolts to the deck of the bumper
- ▶ Carries up to 37" Tire
- ▶ Durable Black Wrinkle powder coat finish



TOUGH COUNTRY



➤➤ Polaris



➤➤ Yamaha



➤➤ Kawasaki



➤➤ Kubota



➤➤ Bobcat



➤➤ Honda



➤➤ John Deere

UTV

American Values Forged Into Our

FRONT BUMPER ◀◀

THE BENEFITS:

- ▶ 2" Heavy Duty Pipe Base
- ▶ Frame Mounted
- ▶ Requires no Vehicle Modifications
- ▶ Winch Ready
- ▶ Shackle Mounts
- ▶ 2" Receiver
- ▶ 1" Pipe Light Loop
- ▶ Durable Black Wrinkle powder coat finish



American Values Forged Into Our

REAR BUMPER ◀◀

THE BENEFITS:

- ▶ 1.25" Heavy Duty Pipe Base
- ▶ Frame mounted with no vehicle modification necessary
- ▶ Well Stocked Inventory on Most Models
- ▶ Durable Black Wrinkle powder coat finish
- ▶ Does not impeded bed dump



THE FINISH OPTIONS



▶▶ Matte Black Finish



▶▶ Black Wrinkle Finish



▶▶ Ford Arizona Beige Finish



▶▶ Ford Pale Adobe Finish



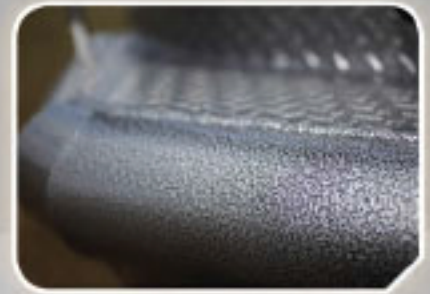
▶▶ Ford Pueblo Gold Finish



▶▶ Caribou Finish



▶▶ Primer Only Finish



▶▶ Silver Vein



▶▶ Dodge White Gold Finish



▶▶ White Finish



▶▶ Bed Liner

*Finishes not available on all products

MERCH



▶▶ Camo Cap



▶▶ Flooded Timber Cap



▶▶ Infinity Camo Cap



▶▶ Sport Tek Polo Shirt



▶▶ Soft Shell Jacket



▶▶ Man Camp T-Shirt



▶▶ NRA Cutting Board



▶▶ NRA Cutting Board



TORCH LEDS



▶▶ 2x2 Post Mount
1,800 Raw Lumens



▶▶ 3x2 Flush Mount
1,800 Raw Lumens



▶▶ 6" TORCH Bar
3,240 Raw Lumens



▶▶ 12" TORCH Bar
6,480 Raw Lumens



▶▶ 20" TORCH Bar
10,800 Raw Lumens



▶▶ 30" TORCH Bar
16,200 Raw Lumens



▶▶ 50" TORCH Bar
25,920 Raw Lumens



▶▶ Wiring Harness W/ Switch

Tough Country TORCH LEDS are one of the newest products in the Tough Country line. All lights feature CREE LEDs with a 6000K color temperature rating. Each light comes with a waterproof switch and wiring harness for easy installation.



IN STOCK PARTS

BRUSH GUARD

Tough Country's Brush guard with expanded metal provides premium protection for your front end. With heavy duty 3/8" plate brackets & 1.25" light loop protection, you will give your vehicle a sleek look with stellar front end protection. Our gloss black powder coat finish is one of the best in the business, carrying a 1 year limited warranty. Please note that Brush guards do not work with front sensors if equipped. If your vehicle has front sensors look at one of our front bumper options that retains them.

TRADITIONAL FRONT

The Tough Country Traditional front starts with a strong 4" pipe base, heavy upright push bars, and 1 1/4" pipe light loops. It has Tough Country strength and durability with a classic look. This bumper comes equipped with a 2" Protruding receiver, Sleeves for OEM Foglights, Expanded Metal in the grille and 3/4" Shackles Mounts. This part comes standard with our gloss black powder coat finish boasting a one year limited warranty. Note some models do not retain OEM Tow Hooks.

Chevy	2007.5-2013 1500 Silverado	BG2007CE
Chevy	2014-2016 1500 Silverado	BG2014CE
Chevy	2011-2014 2500/3500 Silverado	BG3411CE
Chevy	2015-2016 2500/3500 Silverado	BG3415CE
Dodge	2010-2016 2500 & 3500 Ram	BG1034DE
Dodge	2010-2016 4500 & 5500 Ram	BG1155DE
Ford	2009-2014 F150	BG2009FE
Ford	2011-2016 F250-F350 Super Duty	BG2011FE
Ford	2015-2016 F-150	BG2015FE
Ford	2011-2016 F450-F550 Super Duty	BG4511FE
GMC	2015-2016 2500 & 3500 Sierra	BG2515GE
Toyota	2014-2016 Tundra	BG0714TE

Chevy	2003-2007 2500 & 3500 H.D. Silverado Classic Body Style	TFR0215CLRESM
Chevy	2007-2010 2500 & 3500 Silverado H.D.	TFR3407CLRE
Chevy	2011-2014 2500 & 3500 Silverado H.D.	TFR3411CLRE
Chevy	2015-2016 2500/3500 Silverado	TFR3415CLRE
Chevy	2015-2016 2500/3500 Silverado	TFR3415CLREFS
Chevy	2015-2016 2500/3500 Silverado	TFR3415CLREW
Dodge	1996-2002 2500, 3500 Ram & 1996-2001 1500 Ram	TFR0201DLRESM
Dodge	2002-2005 1500 Ram	TFR0208DLRESM
Dodge	2003-2005 2500 & 3500 Ram	TFR0217DLRESM
Dodge	2006-2008 1500 Ram NON MEGA CAB	TFR0615DLRESM
Dodge	2010-2016 2500 & 3500 Ram	TFR1034DLRESM
Dodge	2010-2016 2500 & 3500 Ram	TFR1034DLREW
Dodge	2010-2016 4500 & 5500 Ram	TFR1155DRE
Dodge	2006-2009 2500/3500 Ram & 2006-2009 MEGA Cab	TFR2006DLRESM
Ford	1999-2004 F250-F550 Super Duty 1999-2004 Excursion	TFR0200FLRESM
Ford	2005-2007 F250-F550 Super Duty 2005-2007 Excursion	TFR0500FLRESM
Ford	2008-2010 F250-F350 Super Duty	TFR0800FLRE
Ford	2011-2016 F250-F350 Super Duty	TFR2011FLRESM
Ford	2011-2016 F250-F350 Super Duty	TFR2011FLREW
Ford	2011-2016 Ford F450-F550 Super Duty	TFR4511FRE
GMC	2003-2007 2500/3500 H.D. Sierra Classic Body Style	TFR0220GLRESM
GMC	2007-2010 2500/3500 Sierra H.D.	TFR2507GLRE
GMC	2011-2014 2500/3500 Sierra H.D.	TFR2511GLRE
GMC	2015-2016 2500 & 3500 Sierra	TFR2515GLRE
Toyota	2014-2016 Tundra	TFR0714TLRE

DELUXE FRONT

4" base pipe going wheel to wheel. It comes with a unique A-Frame design, 1 ¼ light loops, 2" Flush Mount Receiver Sleeve, sleeves for OEM Foglights & 3/4" Shackle Mounts.

EVOLUTION FRONT

10 Gauge flat plate steel and retains the trucks factory tow package. This bumper comes standard with sleeves for OEM Foglights, hidden winch mount with removable plate & a durable black wrinkle powder coat finish. The winch mount will hold up to a 16.5 Warn Electric winch. Note not all winch models will work with this bumper.

TRADITIONAL REAR

Bumper has an 8" drop and comes standard with 3/4" Shackle mounts & will retain your OEM reverse sensors and tow package.

EVOLUTION REAR

10 Gauge flat plate steel and retains the trucks factory tow package. Comes standard with a black wrinkle powder coat finish, and side step for easy bed access, retains OEM reverse sensors. Comes pre cut to fit the Tough Country Torch Flush Mount LEDs which are sold separately.

DELUXE REAR

10" Drop, 6" White Oval Lights, Sleeves for Reverse Sensors & 3/4" Shackle Mounts, 2" receiver built in to it's pipe and heavy duty reinforcement brackets tied directly to your frame. The factory receiver must be removed to install.

UTV FRONT

Comes standard equipped with a 2" heavy duty pipe base, 12 gauge diamond plate, winch ready, shackle mounts, 2" receiver, 1" pipe light loops, black wrinkle powder coat and mount to factory holes.

UTV REAR

1.25" pipe frame with an industrial black wrinkle powder coat finish.

JEEP FRONT

Comes standard with tabs for LED Lights, Winch Mount, 3/4" Shackle Mounts, Sleeves for OEM Foglights & Black Wrinkle powder coat finish.

JEEP REAR

Comes standard with a 2" Receiver, pre cut for flush mount LEDs, 3/4" Shackle Mounts & durable Black Wrinkle powder coat finish.

Dodge	2010-2016 2500 & 3500 Ram	DFR1034DLFSM
Ford	2011-2016 F250-F350 Super Duty	DFR2011FLFSM
Chevy	2015-2016 2500/3500 Silverado	DFR3415CLFSM
Chevy	2015-2016 2500/3500 Silverado W/ Sensors	DFR3415CLFSMFS

Dodge	2010-2016 2500 & 3500 Ram	EFR1034DALW
Ford	2011-2016 F250-F350 Super Duty	EFR2011FALW
Chevy	2011-2014 2500 & 3500 Silverado H.D.	EFR3411CALW
Chevy	2015-2016 2500/3500 Silverado	EFR3415CALWFS

Ford	1999-2016 F250-F450 Superduty	TB0065FRSSM
Dodge	2010-2016 2500 & 3500 Ram	TB1034DRSSM
Chevy	2015-2016 2500/3500 Silverado	TB3415GMRSSM
GMC	2015-2016 2500/3500 Sierra	TB3415GMRSSM

Ford	2008-2016 F250-F350 Super Duty	EB0065FLRS
Dodge	2010-2016 2500 & 3500 Ram	EB1034DLRS
Chevy	2011-2014 2500 & 3500 Silverado H.D.	EB3411CLRS
Chevy	2015-2016 2500/3500 Silverado	EB3415CLRS

Dodge	2010-2016 2500 & 3500 Ram	DB1034D10LSMRS
Ford	1999-2016 F250-F450 Superduty	DB2020F10LSMRS
Chevy	2015-2016 2500/3500 Silverado	DB3415GM10LSMRS
GMC	2015-2016 2500/3500 Sierra	DB3415GM10LSMRS

Kawasaki	2006-2015 Mule 4010	MULE FR
Kawasaki	2014-2017 Pro FXT	MULE FXT
Polaris	09-16 Ranger 800	RANGER 0912
Polaris	2011-2015 Ranger 900, 2017 Ranger 1000	RANGER 900
Honda	2016-207 Honda Pioneer 1000	HP1KFR
Yamaha	2014-2015 Yamaha Viking	VIKING 014

Kawasaki	2006-2015 Kawasaki Mule 4010	MULE BB
Polaris	2010-2014 Polaris Ranger 800, 800 Crew	RANGER BB
Polaris	2011-2015 Polaris Ranger 900	RANGER BB900
Kawasaki	2014-2017 Pro FXT	FXTBB

Jeep	2007-2016 Jeep Wrangler JK	JKFR
------	----------------------------	------

Jeep	2007-2016 Jeep Wrangler JK	JKBB
------	----------------------------	------