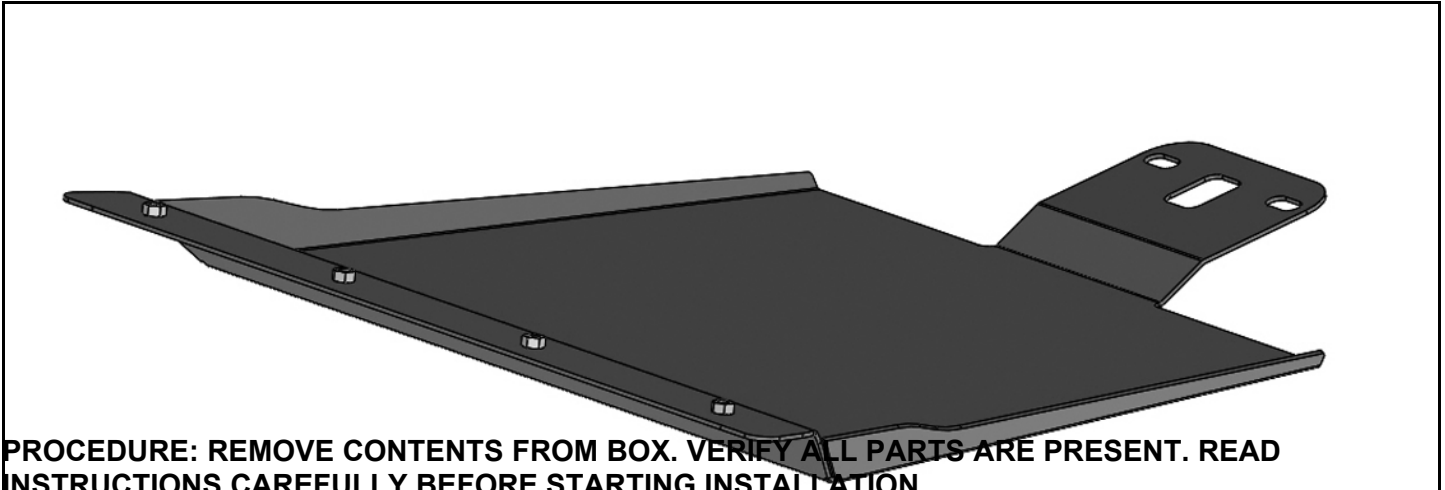


**SKID PLATE FOR HD2 FRONT BUMPER  
15-17 FORD F150**

**PARTS LIST:**

1	Skid Plate	2	8mm x 28mm x 3mm Flat Washers
2	8mm U-Clips	4	8mm x 24mm x 2mm Flat Washers
6	8-1.25mm x 25mm Button Head Bolts	1	5mm Wrench
6	8mm Lock Washers		

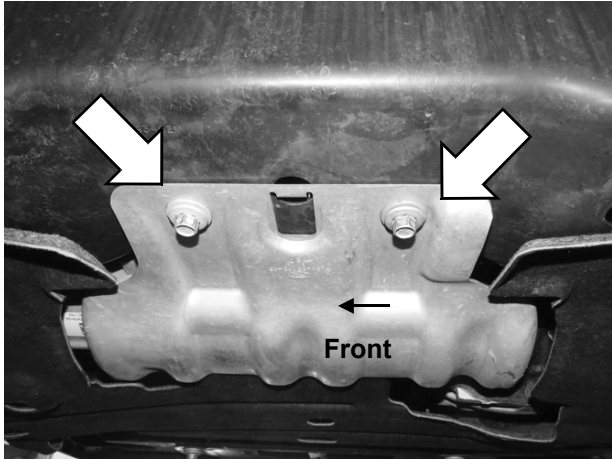


**PROCEDURE: REMOVE CONTENTS FROM BOX. VERIFY ALL PARTS ARE PRESENT. READ INSTRUCTIONS CAREFULLY BEFORE STARTING INSTALLATION.**

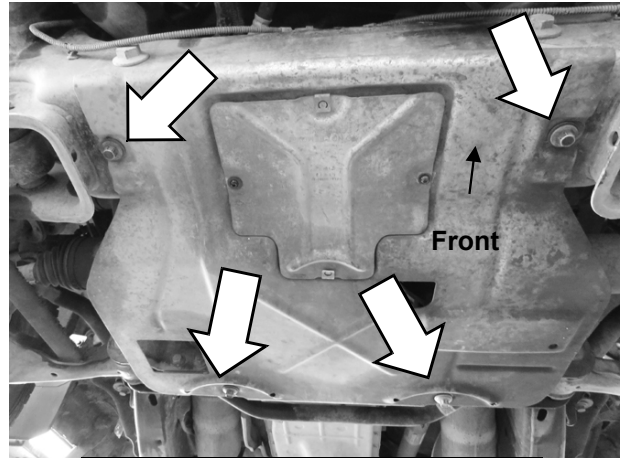
1. Once the HD2 Front Bumper has been installed, remove all the bolts attaching the factory skid plate to the vehicle, **(Figures 1 & 2)**.
2. If the factory clip nuts in the bottom of the crossmember are damaged or missing, replace the clip nuts with the included (2) 8mm Clip Nuts, **(Figures 3 & 4)**.
3. With assistance, place the Skid Plate on top of the back of the Bumper and align the welded nuts on the Plate with the slots on the Bumper. Use (4) 8mm Button Head Bolts, (4) 8mm Lock Washers and (4) 8mm x 24mm Flat Washers to attach the Skid Plate to the Bumper, **(Figure 5)**. Leave hardware loose at this time.
4. **On models with a standard skid plate (Fig 1):**
  - a. With assistance, place the rear mount on the Skid Plate between the factory skid plate and the crossmember.
  - b. Reuse the (2) factory bolts or the included (2) 8mm Button Head Bolts, (2) 8mm Lock Washers and (2) 8mm x 28mm Flat Washers, **(Figures 6 & 7)**, to attach the HD2 Skid Plate to the factory skid plate and the crossmember.
  - c. Adjust Skid Plate as necessary and tighten hardware at this time.
5. **On models with an off-road skid plate (Fig 2):**
  - a. Attach the rear of the Skid Plate to the (2) Clip Nuts using (2) 8mm Button Head Bolts, (2) 8mm Lock Washers and (2) 8mm x 28mm Flat Washers, **(Figures 6 & 8)**.
  - b. Adjust Skid Plate as necessary and tighten hardware at this time.
  - c. Reinstall the factory off-road skid plate and tighten hardware, **(Figure 9)**.
6. Do periodic inspections to the installation to make sure that all hardware is secure and tight.

**To protect your investment,** Do not use any type of polish or wax that may contain abrasives that could damage the finish. Mild soap may be used to clean the Skid Plate.

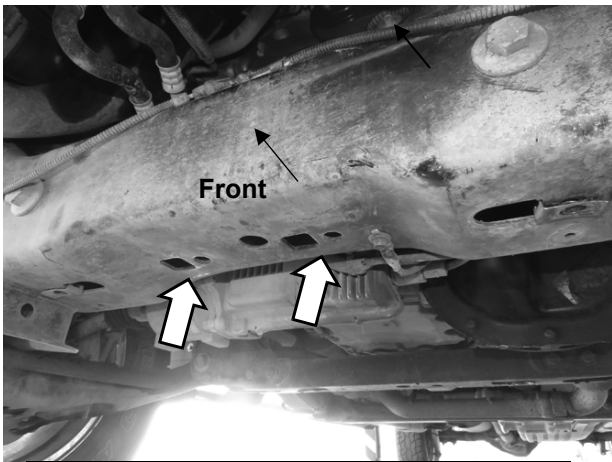
**SKID PLATE FOR HD2 FRONT BUMPER  
15-17 FORD F150**



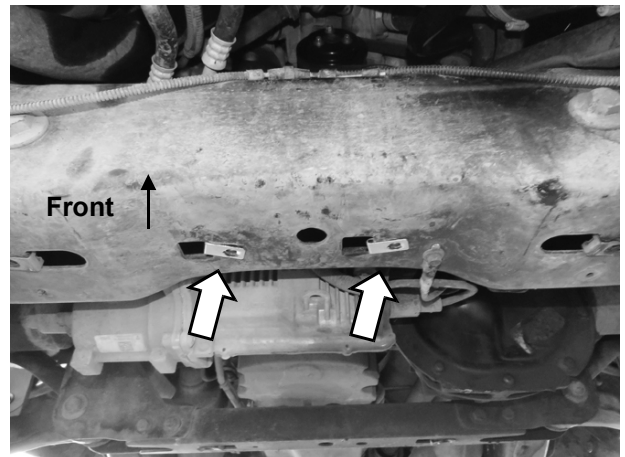
**(Fig 1) Remove factory skid plate  
(STD factory skid plate pictured)**



**(Fig 2) Remove factory skid plate  
(large factory skid plate pictured)**

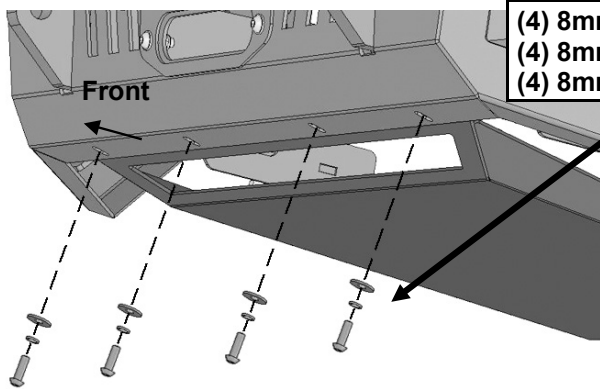


**(Fig 3) Rear Skid Plate mounting location  
on crossmember without clip nuts**



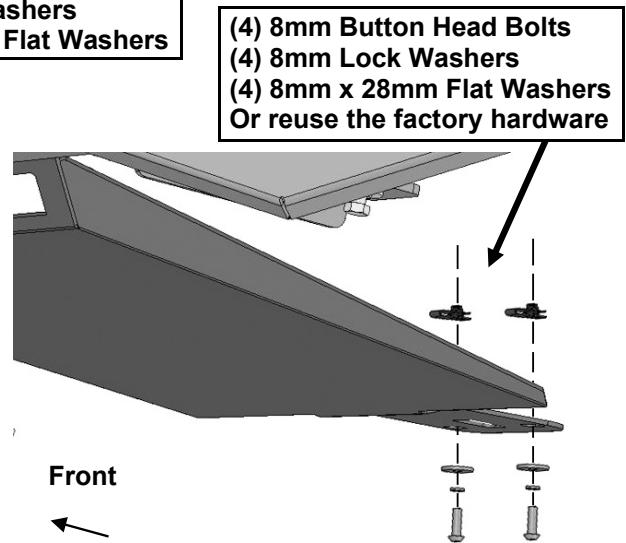
**(Fig 4) Insert (2) 8mm U-  
Clips into mounting holes**

**SKID PLATE FOR HD2 FRONT BUMPER  
15-17 FORD F150**



- (4) 8mm Button Head Bolts
- (4) 8mm Lock Washers
- (4) 8mm x 24mm Flat Washers

**(Fig 5) Attach Skid Plate to the back of the Bumper**



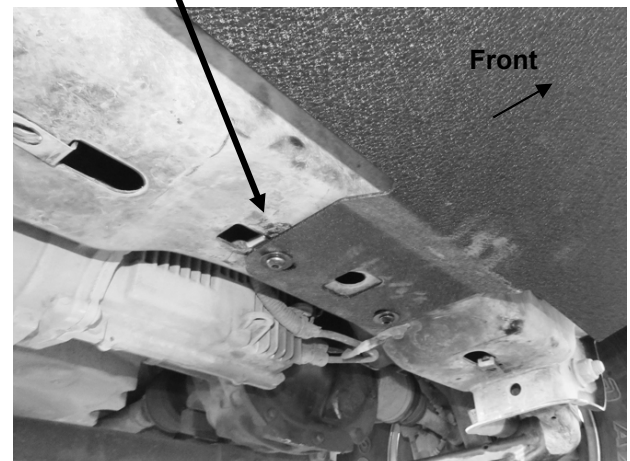
- (4) 8mm Button Head Bolts
- (4) 8mm Lock Washers
- (4) 8mm x 28mm Flat Washers  
Or reuse the factory hardware

**(Fig 6) Attach rear mount on Skid Plate to frame**

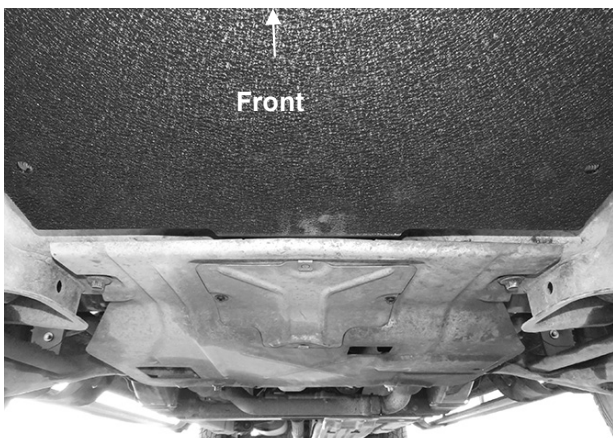


- (4) 8mm Button Head Bolts
- (4) 8mm Lock Washers
- (4) 8mm x 28mm Flat Washers  
Or reuse the factory hardware  
as pictured

**(Fig 7) Skid Plate attached to crossmember**



**(Fig 8) Skid Plate attached to crossmember, model with large factory skid plate pictured**



**(Fig 9) Reinstall large factory skid plate over HD2 Skid Plate**

[View other off-road bumpers made by Torxe on our website.](#)