

TONNO PRO

**Thank you for your
Tonno Pro purchase!**

You have purchased one of the many quality Tonno Pro® branded products offered by Lund International. We take the utmost pride in our products and want you to enjoy years of satisfaction from your investment. We have made every effort to ensure that your product is top quality in terms of fit, durability, finish and ease of installation.



Please Read Before Installing!

Your satisfaction is important to us, please let us help!

If you are having any problems with your Tonno Pro® Tonneau Cover, please read the following steps to help us quickly respond to your requests.

Please take care in saving the box until after your installation is complete. If you have ordered incorrectly, having the original box and packaging materials will save you time and prevent possible return damages.

ORDERED INCORRECTLY - Please contact the store from which you purchased the cover and allow them to contact us to issue a Return Authorization number.

SHIPPING DAMAGE - Please inspect your cover carefully and do not install if you see any damage. Report the damage to the retailer where you purchased it from. They will contact us and we will take the necessary steps to send a new replacement cover.

WARRANTY ISSUES - If you believe you have a warranty issue that may be considered a manufacturing defect, please follow these instructions. For warranty details please see page 4 of this instruction booklet.

A. Make sure the product is **registered** on the Tonno Pro website.

Contact the **Tonno Pro retailer** where you purchased the cover.

B. Please have your **digital images** readily available to email to the Tonno Pro Retailer upon request. This will help expedite the warranty process.

C. Please allow up to **72 business hours** for further instructions on how the claim will be processed.



The material that your product is made from can be recycled. Please also consider recycling the packaging that your product came in.



Hardware:

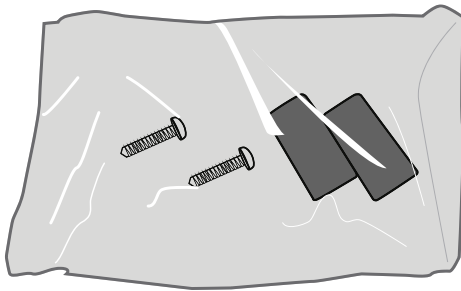
Some assembly required. Tools are needed for this installation: Socket set with ratchet, and Phillips screwdriver. The Front & Rear Clamps are the main moving components. Please be sure you have (4) clamps attached to the cover before you begin your installation.



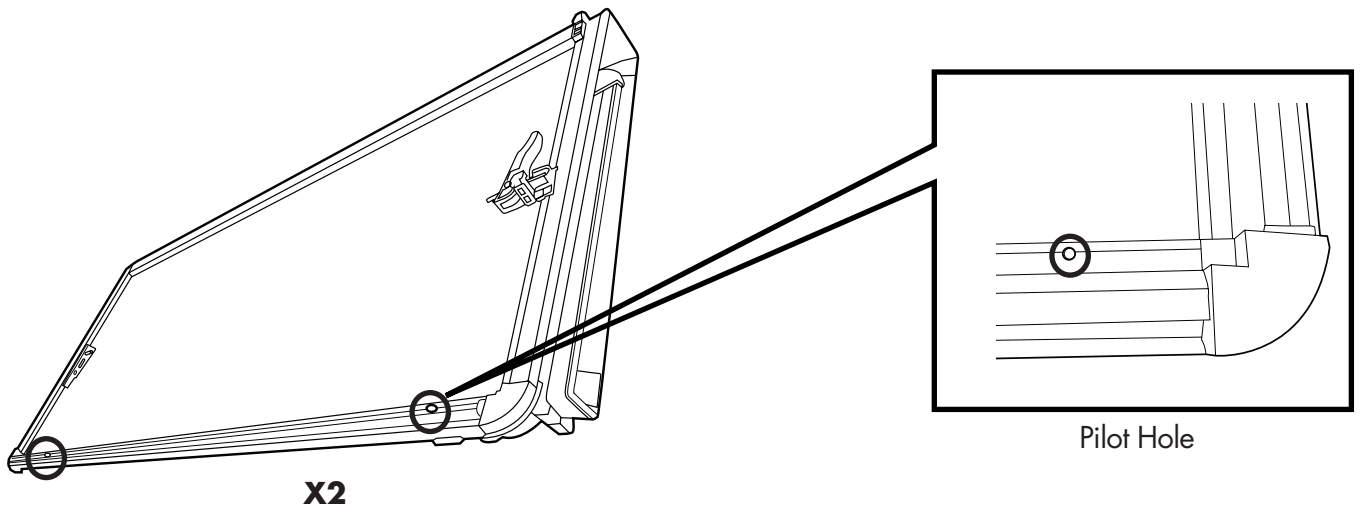
Clamp Mechanism

INSTALLING LOCATORS

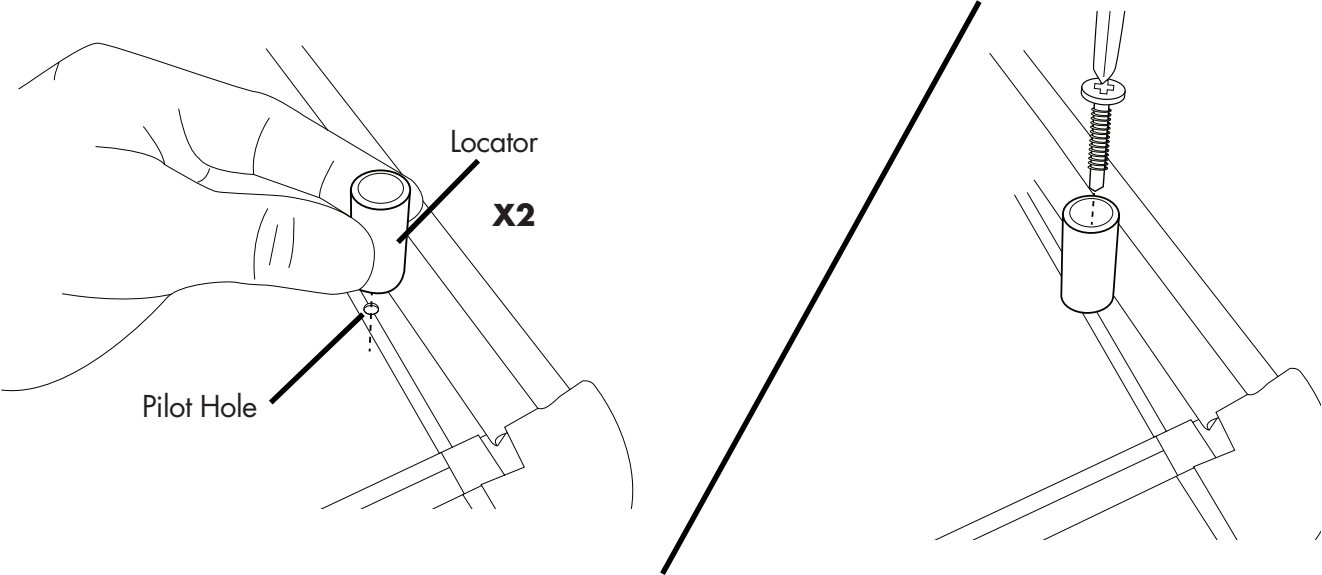
1. Locate the package with the (2) locators and (2) screws.



2. Place the cover on the table so that front latches are facing up. There should be (2) pilot holes on the front extrusion approximately (2) inches from the outsides of the cover.

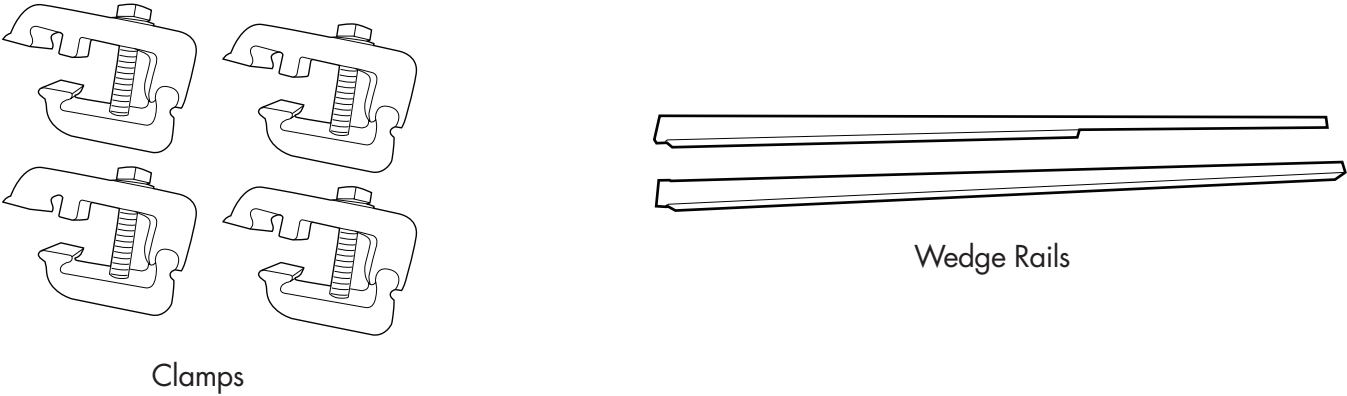


3. Line up the locator with pilot hole and screw it in place.



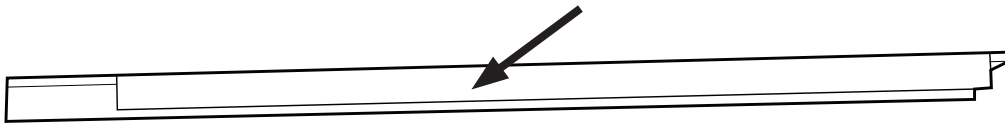
WEDGE RAILS

4. Locate the clamp pack and the (2) wedge rails.

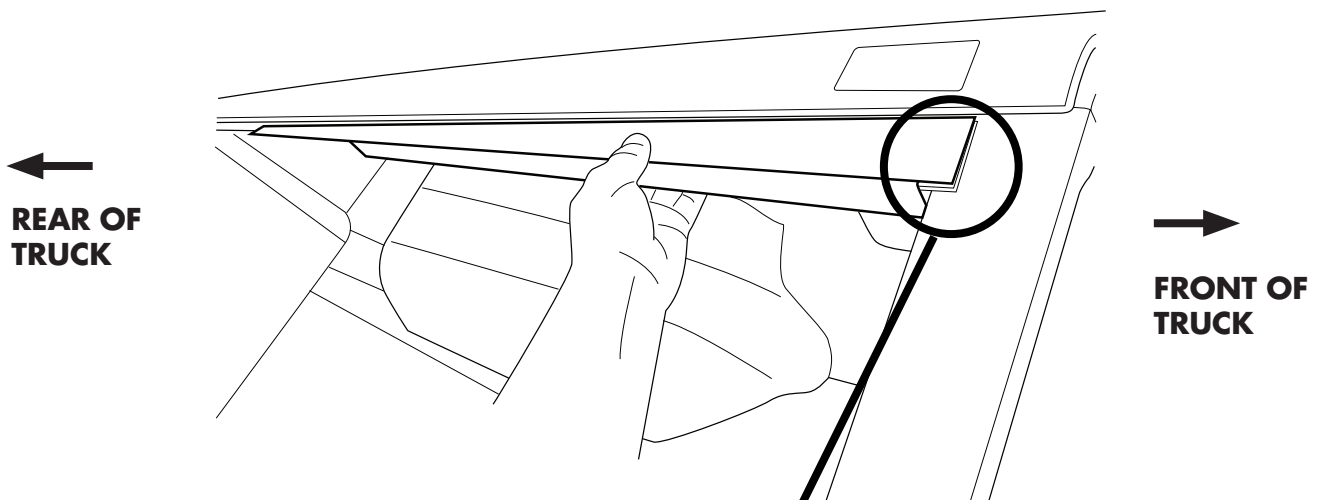


WEDGE RAILS (CON'T.)

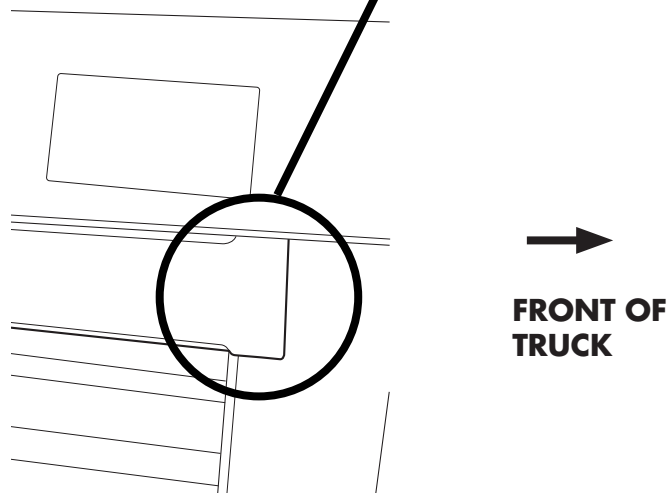
5. Note the shorter flange on the rail always goes toward the inside of the truck bed.



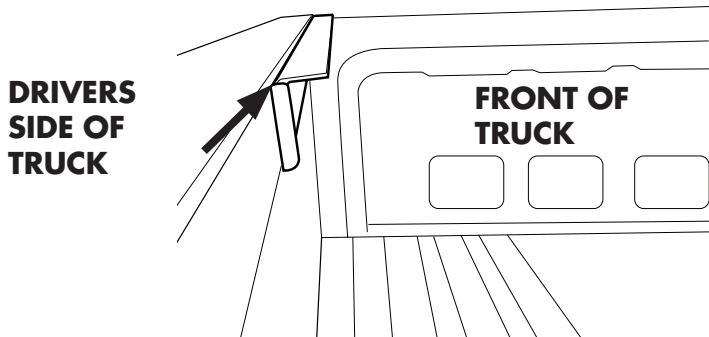
6. Take drivers side rail and line it up with the pinch weld of the truck.



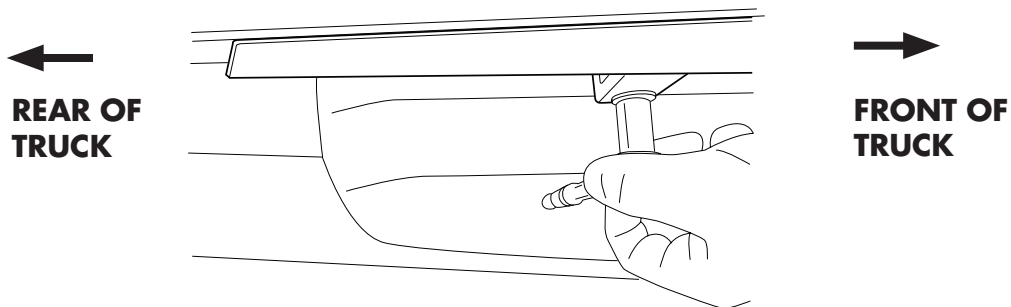
7. Front lip should rest on bulkhead of truck.



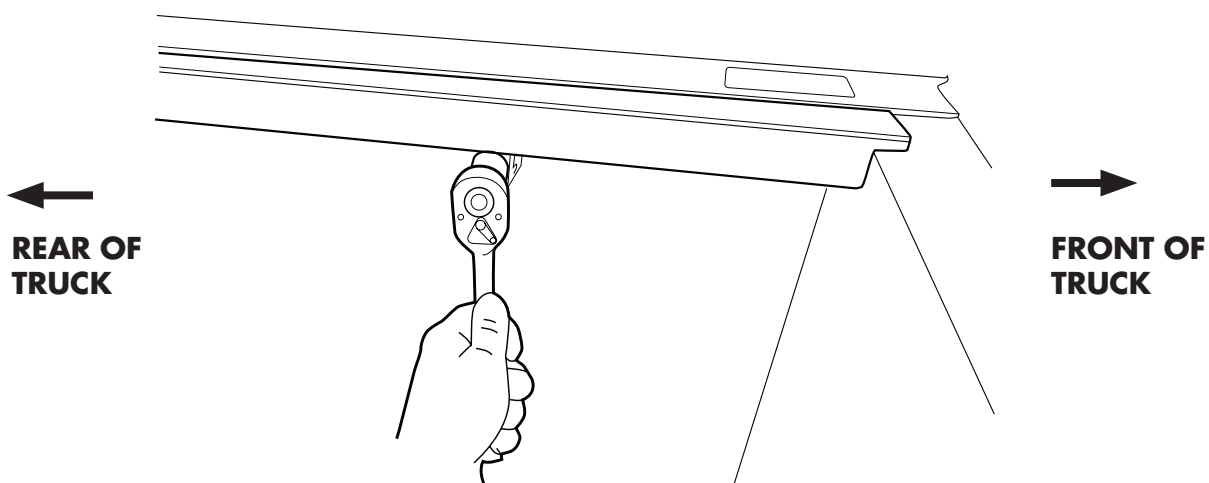
8. Make sure rail is flush to top of truck rail.



9. Install rear clamp first, approximately 6 inches from rear of wedge rail. Make sure clamp is pushed toward top of rails.

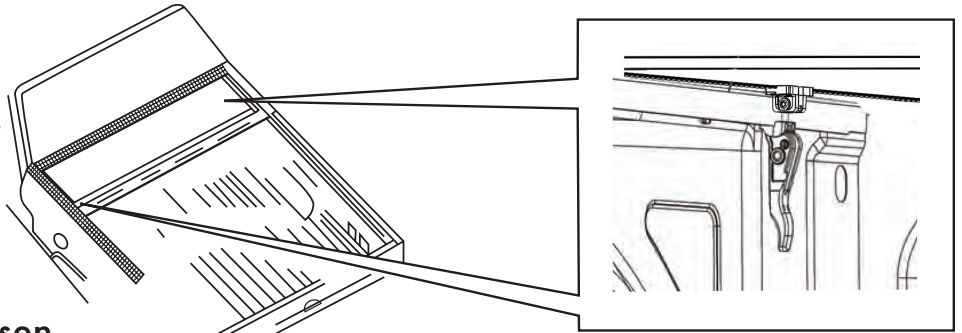


10. Install front clamp next, approximately 6 inches from front of wedge rail. Make sure clamp is pushed toward top of rails.

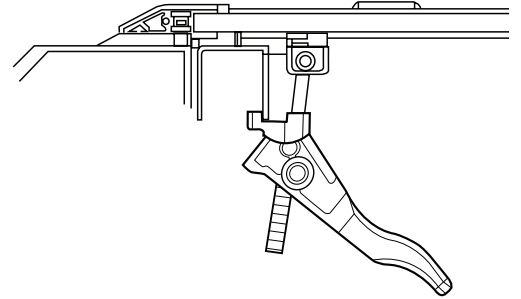


Repeat this process for the passenger side.

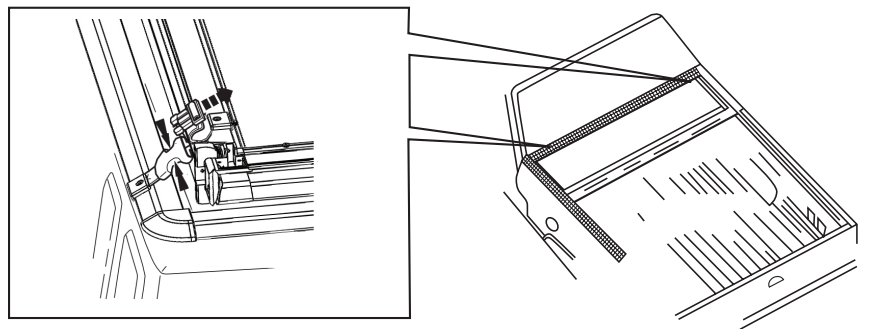
- 11.** Center the cover on the front end of the bed and the side rails, and begin to tighten the clamps until they are snug. **Do not tighten completely.** Repeat on the opposite side of the truck.



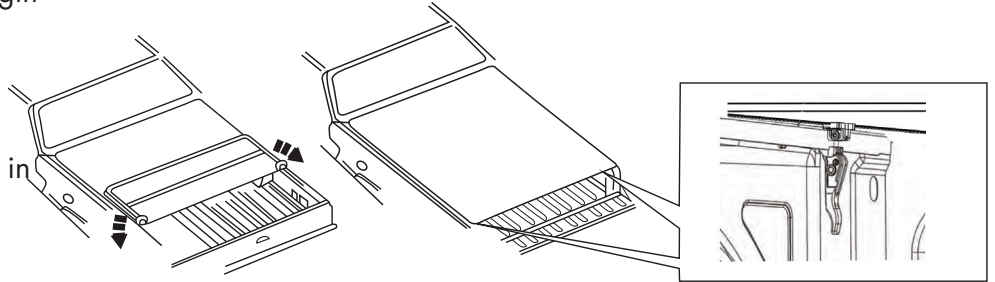
- Adjust front slide-clamp to proper height.
- Rotate bolt so that clamp holder is under side rail that is bolted to truck.
- Rotate handle to tighten clamp enough (not too tight).



- 12.** Unclip the snap clips located in the front of the cover allowing the cover to unfold. The cover has retaining straps with quick-release buckles to keep it from being damaged when bulk hauling or when it is not on the vehicle. **Failure to install the front slide-clamps properly will result in cover fly-off which is not covered by Manufacturer's Warranty.**

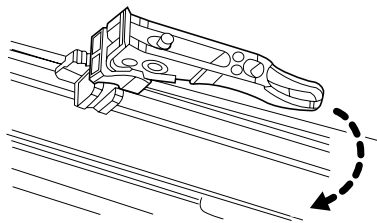


- 13.** Unfold the cover completely and begin to adjust the rear EZ-Clamps at the rear of the bed. Again, make sure they are snug but **not tightened completely**. (Both front and rear clamps will be tightened completely in a later step.)

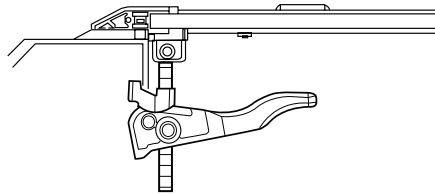


 **Tighten**
"Counter Clockwise"

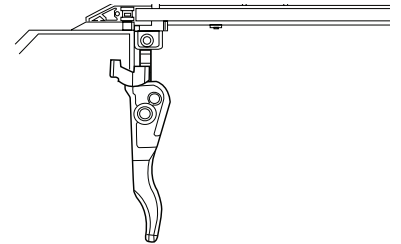
 **Loosen**
"Clockwise"



Rotate handle lever down from its storage position. Adjust clamps to proper height.



Slide handle lever to edge of side rail bolted to truck.



Rotate handle lever to locking position. Repeat for opposite side.

- 14.** Shut the tailgate and make sure the cover is centered around the perimeter of the top of the truck bed. Being sure that the clamps are just snug, you should be able to gently adjust the cover from front to rear or side to side as needed to center the cover over the bed of your truck.
- 15.** Once you have the cover in the desired position, pull the cover back into the open position in order to firmly tighten the front clamps. **When you pull the cover to the open position, it is important to make sure you secure your rear clamping handles into the lock position to avoid damage to your cover.**



WARNING: Rear EZ-Clamps must be locked in the closed position before folding the cover. Failure to do so could cause damage to cover.

NON-WARRANTY!

- 16.** Once you have tightened the front clamps and your Q gaskets are sealed, unfold the cover and make the necessary adjustments to tighten and secure the rear clamps.

WARNING: Prior to vehicle operation, the clamps tightly grip the inner bedwall structure.

TONNEAU COVER MAINTENANCE

To prolong the usage and function of your tonneau cover, you should check it regularly for wear, proper fit, and debris caught on the cover. Check mounting hardware regularly to insure that all clamping mechanisms are tight and secure.

1. When cleaning your tonneau cover, make sure to clean your vehicle and cover in a shaded place like under a tree or in an open garage.
2. First flood the cover with water to remove surface grit that will scratch the finish when wiped. Wash your cover with cool, clean water and a mild soap.
3. Next, using a hose, rinse the cover well making sure to remove all traces of soap and wipe off excess water using a sponge. Be careful to hose down the entire truck to prevent soap from streaking your truck's paint finish. Do not use chemicals like detergents, dish washing liquids, bleaches, harsh cleansers, strong cleaners, dry-cleaning solvents, or any other strong chemicals as a cleanser.
4. Using a white all-cotton towel, wash the entire tonneau cover with a mild cleaner. **Never spot clean** your tonneau cover to avoid rings or bright spots on your tonneau cover. Make sure that you only use a **soft cotton cloth** or **sponge** as a cleaning tool. Do not use rough, abrasive cleaning pads because these can scratch the material. **Do not use protectants that contain petroleum, silicone or citrus-based additives to ensure your cover looks its best!**

TONNO PRO