

TONNO PRO

Thank you for your
Tonno Pro order!



Please read Before Installing!



Your satisfaction is important to us, please let us help!
If you are having any problems with your Tonno Pro Truck Cover, please read the following steps to help us quickly respond to your requests.

Please take care in saving the box until after your installation is complete.

If you have ordered incorrectly, having the original box and packaging materials will save you time and prevent possible return damages.

ORDERED INCORRECTLY - Please contact the store from which you purchased the cover and allow them to contact us to issue a Return Authorization number. The retailer will contact us immediately and we will respond promptly.

SHIPPING DAMAGE - Please inspect your cover carefully and do not install if you see any damage. Report the damage to the retailer where you purchased it from. They will contact us and we will take the necessary steps to send a new replacement cover.

ATTENTION!

1. Do not place objects on or against cover or framework.
2. Do not tie cargo to cover framework.
3. Never allow children or pets to occupy pickup box while cover is closed.
4. Cover is not airtight. Special care is required to keep cargo clean and dry.
5. Fabric cover won't prevent theft of contents inside truck box.
6. Cover must be rolled fully open and secured with retainer straps when towing vehicle backwards.
7. Opened cover must be secured with both retainer straps when driving vehicle.
8. Cover must NEVER be rolled partially open while operating vehicle.
9. Cover must be rolled fully open and secured with retainer straps if any part of the truck bed cover is worn or damaged.

OWNER/USER RESPONSIBILITIES

It is the responsibility of the owner/user to read this manual and comply with the operating procedures. Failure to follow safety instructions and warning labels could result in failure of your cover system and/or personal injury.

MESSAGES TO INSTALLER

- Always wear safety glasses and/or other necessary protective equipment when installing your truck bed cover system.
- These instructions are complete for most pickup models. Additional instructions are included, if required for your pickup. Please read entire manual before installing your truck bed cover system.

If you have:

- Plastic (composite) bed caps, remove the black rubber seal gasket before installation.
- Utility rails you will need to purchase an additional bracket for your cover to fit properly. www.tonnopro.com for a complete listing of Utility Track Brackets.



WARNING

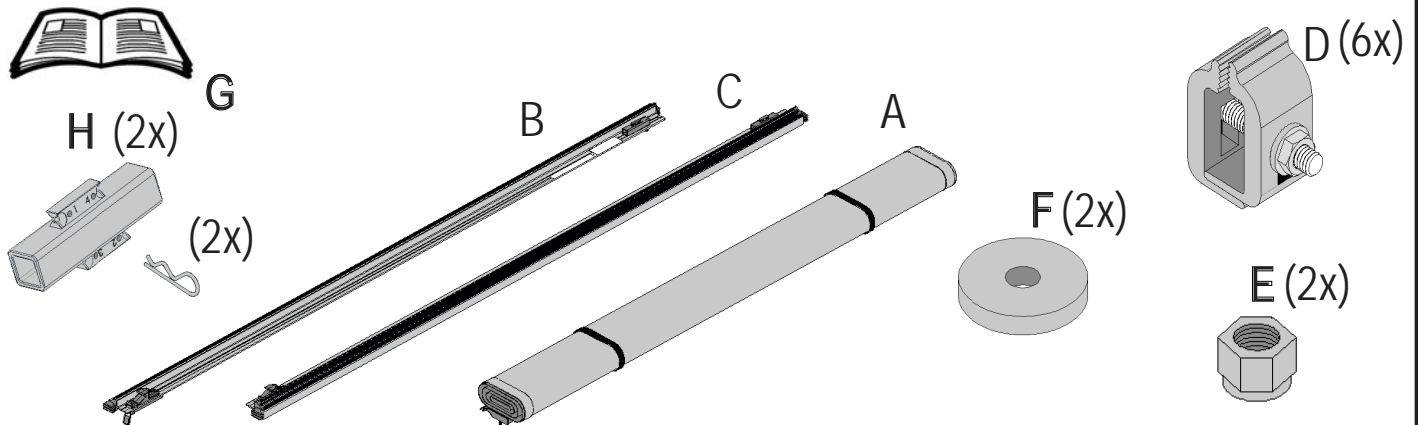
Tighten clamps securely on side rails before driving vehicle, to prevent cover from blowing off.

To prolong the usage and function of your tonneau cover, you should check it regularly for wear, proper fit, and debris caught on the cover. Check mounting hardware regularly to insure that all clamping mechanisms are tight and secure.

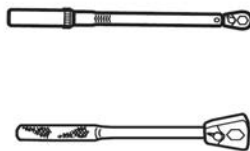
1. When cleaning your truck cover, make sure to clean your vehicle and cover in a shaded place like under a tree or in an open garage.
2. First flood the cover with water to remove surface grit that will scratch the finish when wiped. Wash your cover with cool, clean water and a mild soap.
3. Next, using a hose, rinse the cover well making sure to remove all traces of soap and wipe off excess water using a sponge. Be careful to hose down the entire truck to prevent soap from streaking your truck's paint finish. Do not use chemicals like detergents, dish washing liquids, bleaches, harsh cleansers, strong cleaners, dry-cleaning solvents, or any other strong chemicals as a cleanser.
4. Apply some quality vinyl cleaner that you can find in the nearest auto parts store. Using a white all-cotton towel, wash the entire tonneau cover with the cleaner. To avoid rings or bright spots on your tonneau cover never spot clean your tonneau cover. Make sure that you only use a soft cotton cloth or sponge as a cleaning tool. Do not use rough, abrasive cleaning pads because these can scratch the vinyl, creating pores that allow dirt and other unwanted particles to stick. Do not use vinyl protectants that contain petroleum, silicone or citrus-based additives to ensure your cover looks its best!

Components

1: **IMPORTANT - Please read BEFORE starting.**



Tools Required



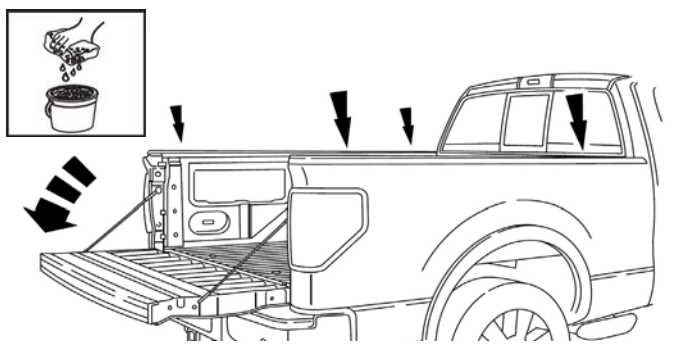
9/16"



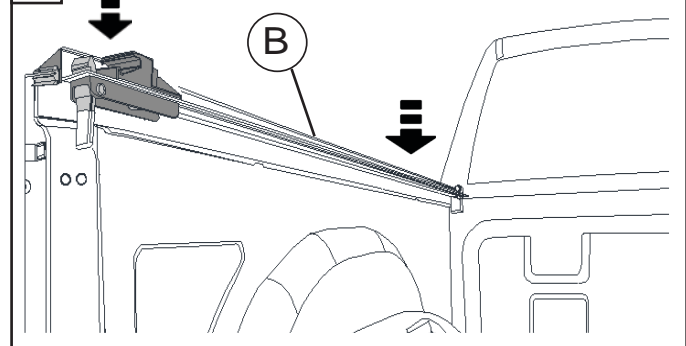
1/2"



2:

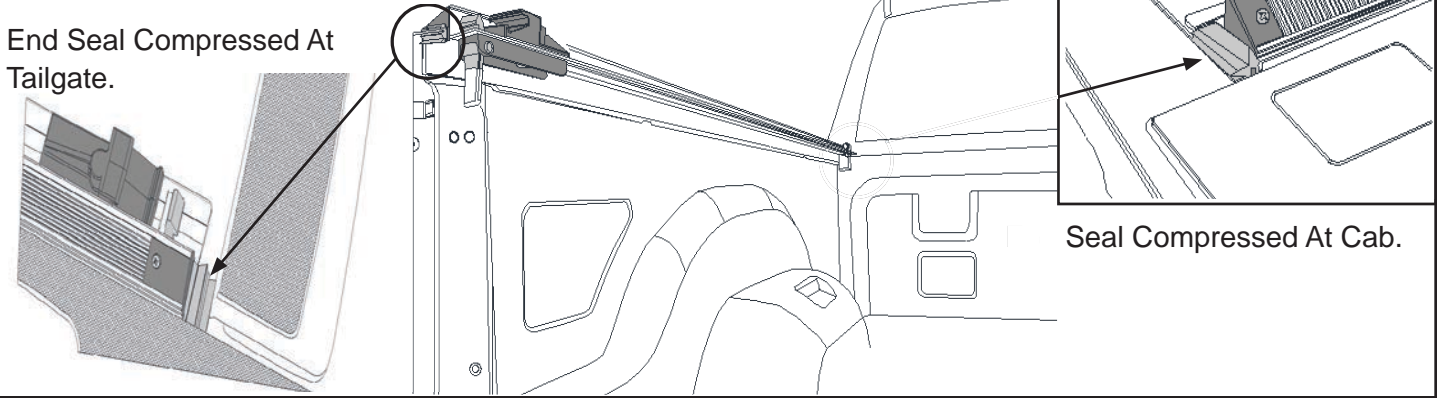


3:



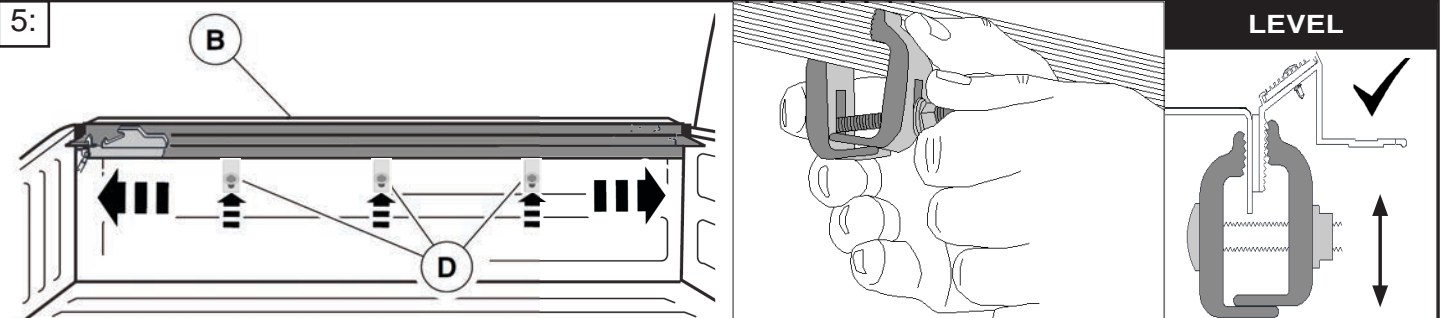
4: With Tailgate Closed, Position Side Rail Compressing End Seals Equally Between Cab and Tailgate.

End Seal Compressed At Tailgate.

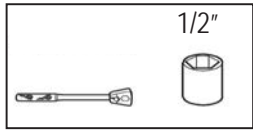


Seal Compressed At Cab.

5:



When installing clamps, finger tighten nut holding back side of clamp. Be sure the teeth of the clamp engage with the grooves of the side rail. Holding the clamp, tighten the nut not allowing the clamp to rotate.

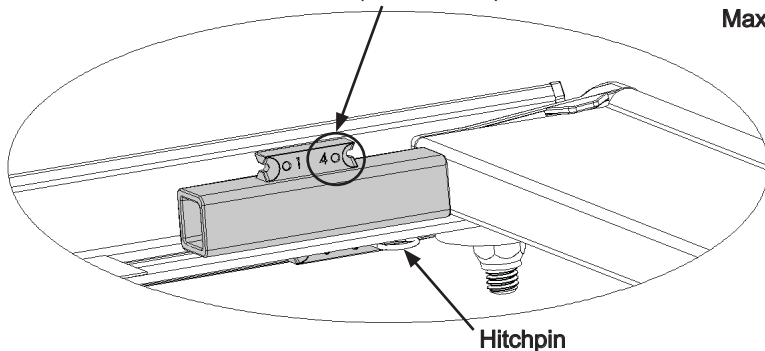


WARNING Tighten clamps securely on side rails before driving vehicle.

6: Repeat steps 3-5 on passenger side for item C. Proceed to step 7 when complete.

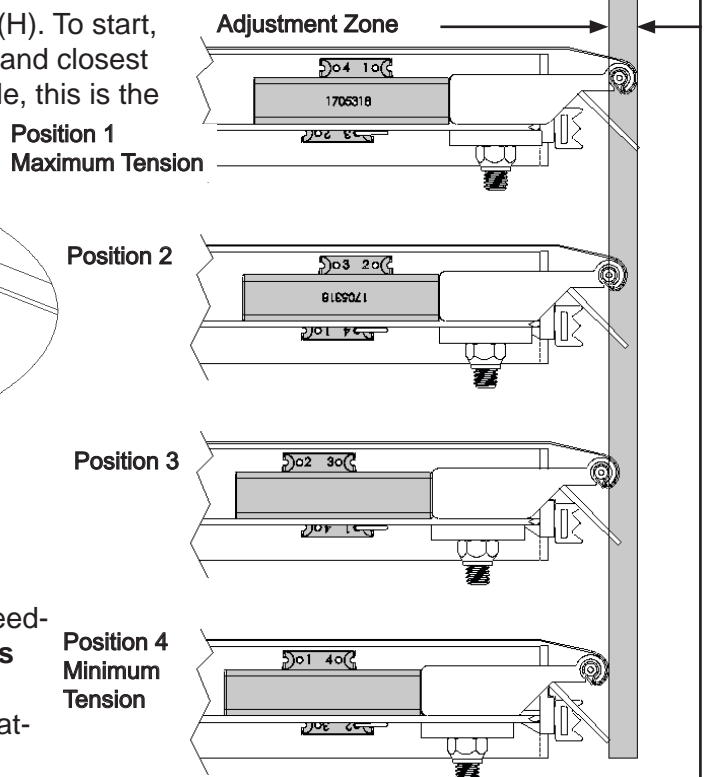
SETTING TENSION ADJUSTMENT BLOCKS

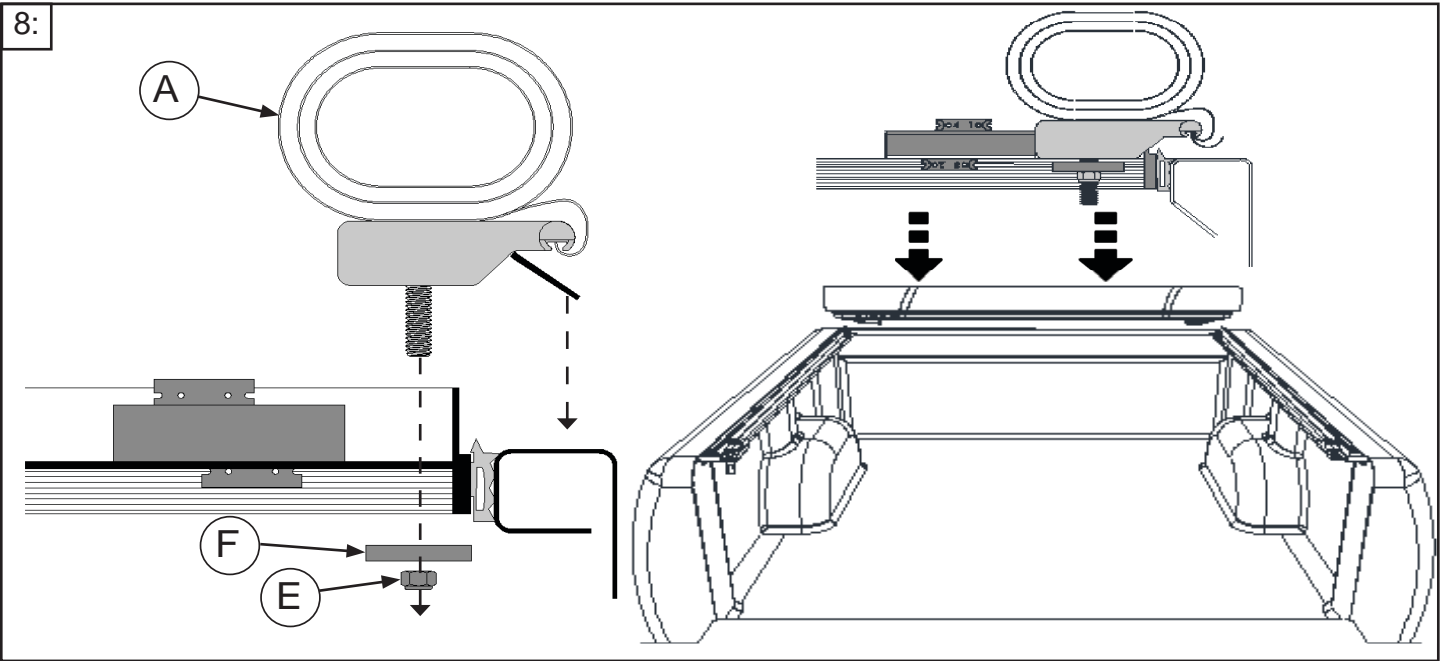
7: Cover tension is controlled by two adjustable blocks(H). To start, place blocks in position shown below. With 4 on top and closest to front header. Secure blocks with hitchpin in #2 hole, this is the least amount of tension. (Position 4)



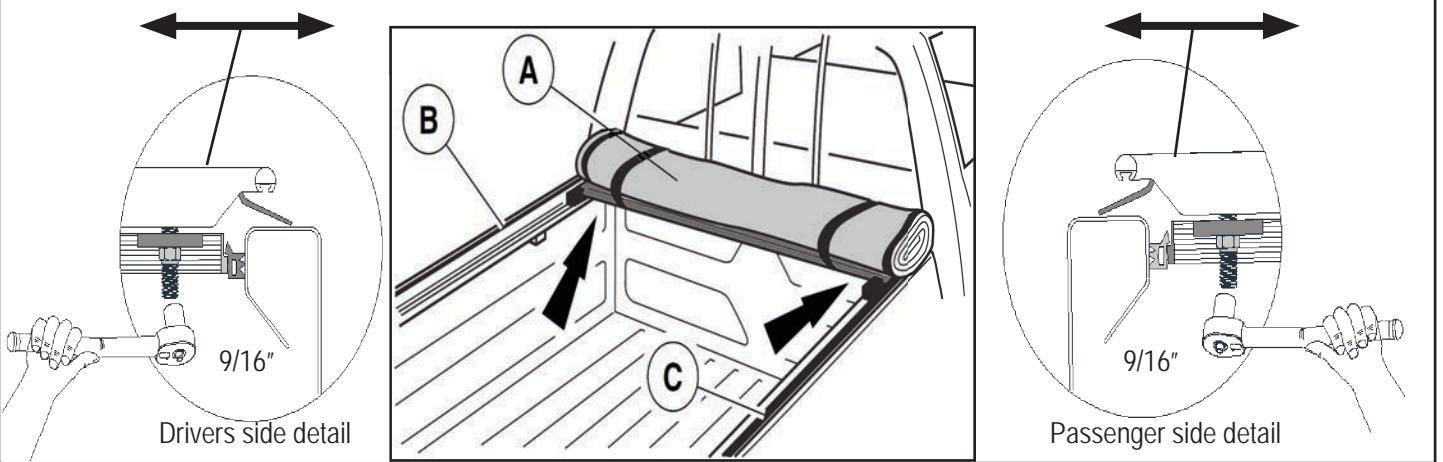
Setting cover tension

1. Set cover tension during warmest part of the day.
2. Roll cover up to adjustable block.
3. Pull Hitchpin and rotate blocks to the next position needed. Replace Hitchpin. **(Driver and passenger blocks must always be in the same position.)**
4. Close cover and re-check adjustment. Repeat until satisfactory tension has been achieved.

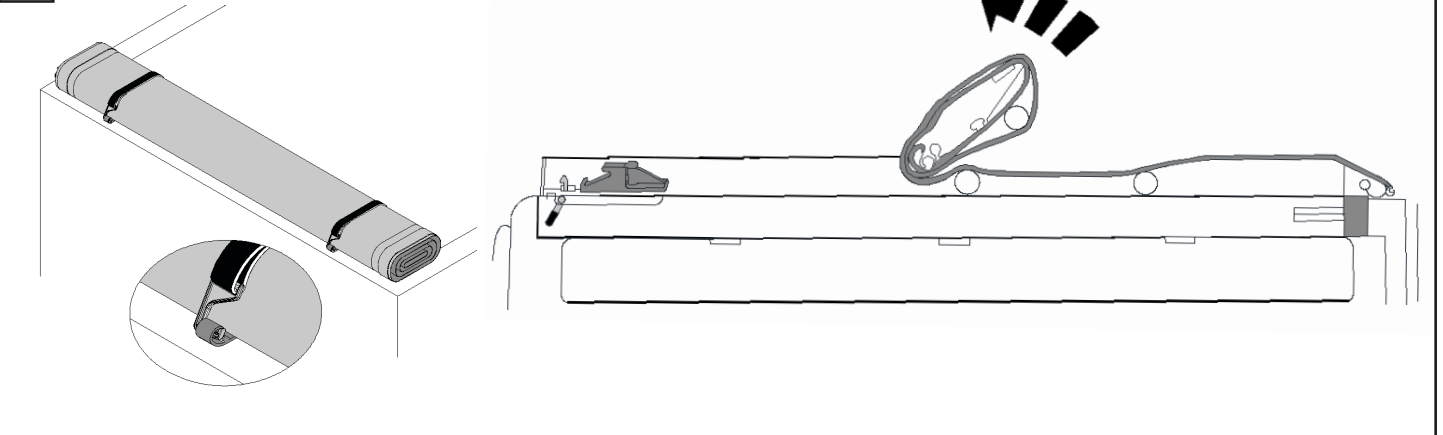


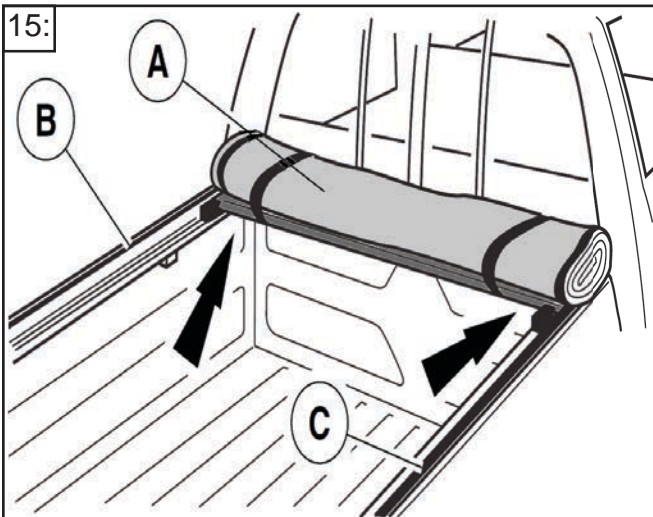
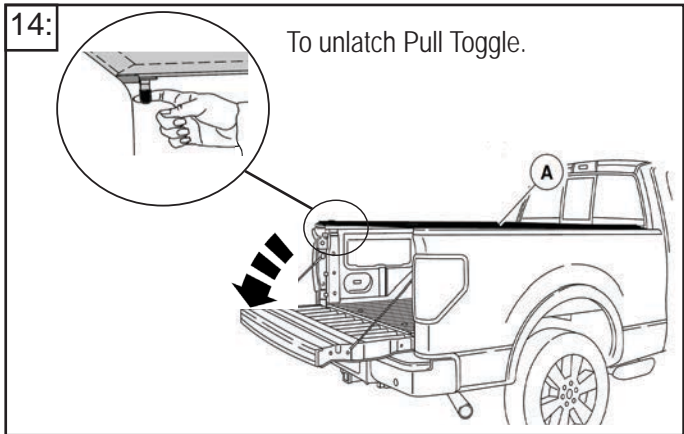
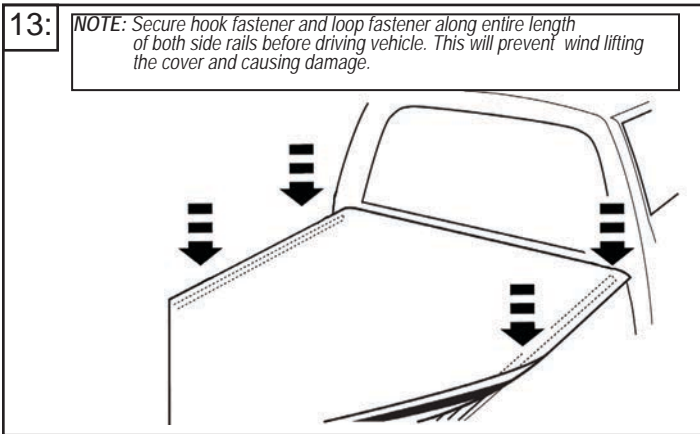
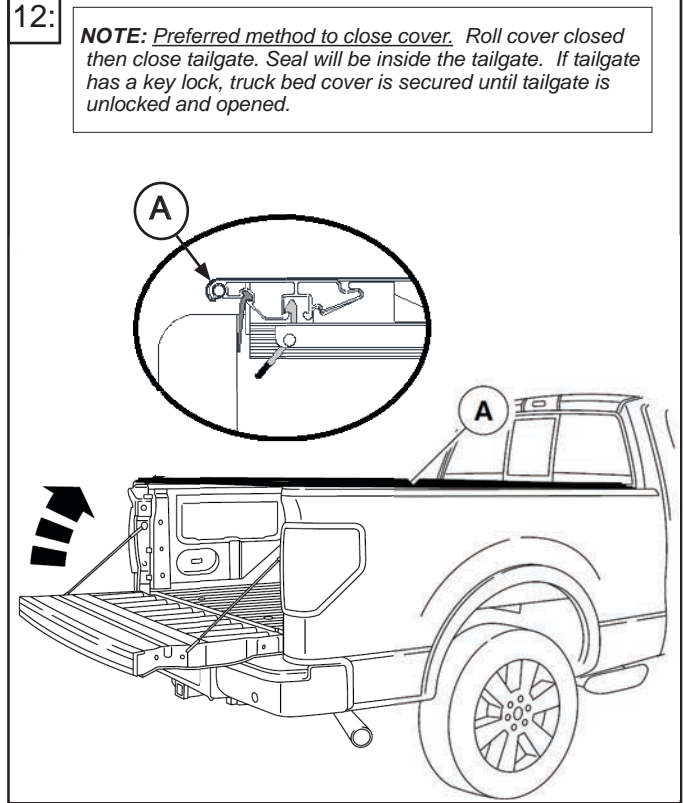
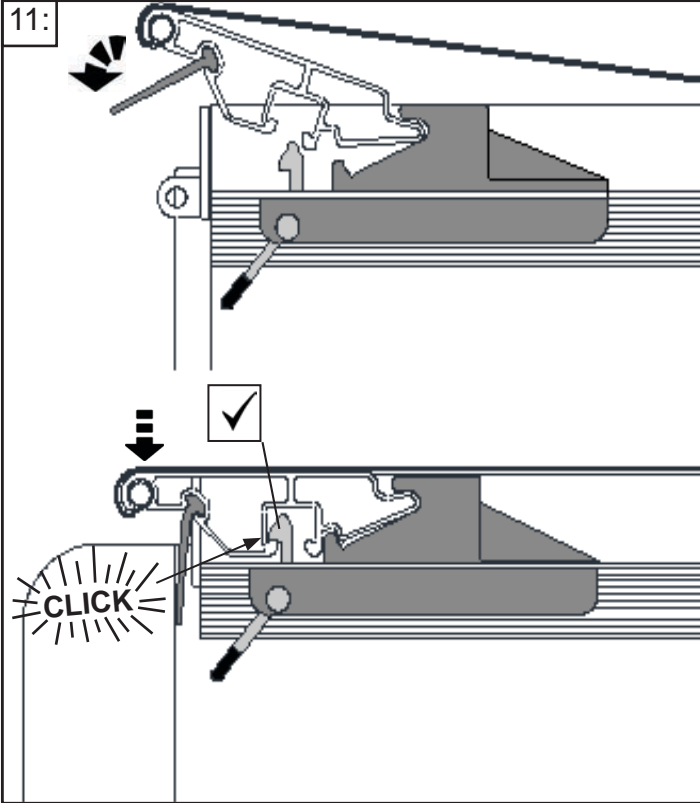


9: Thread nut onto bolt enough to be tight but still able to move freely. DO NOT over tighten nut and plastic washer connection.



10: Unhook and unroll cover to the tailgate.

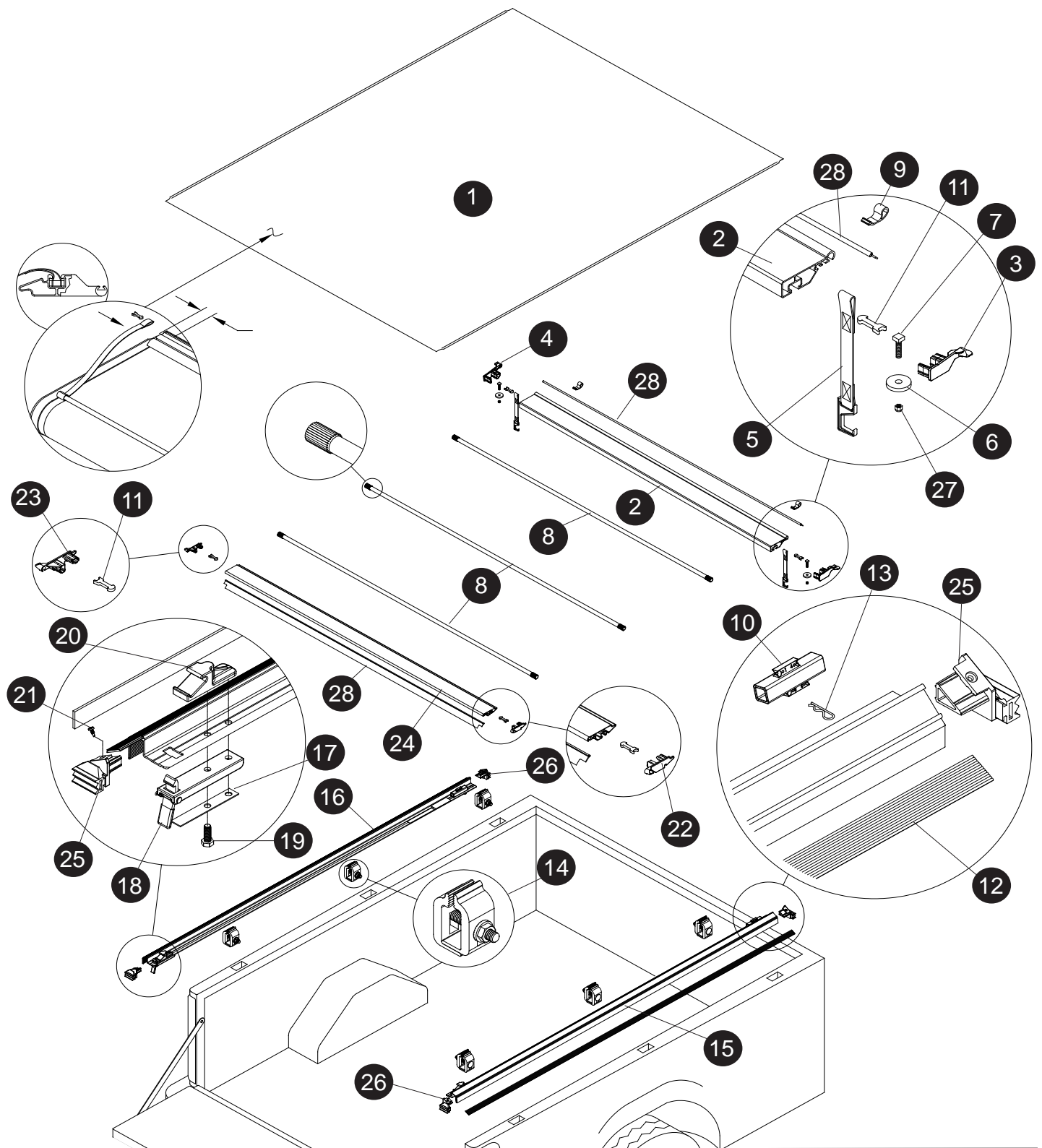




CAUTION

ROLL COVER TIGHT AND SECURE BOTH RETAINER STRAPS. **DO NOT** STOW COVER AGAINST CAB WINDOW.

To stow cover open roll cover to the front. Secure both hooks **DO NOT** stow cover against cab window.



REPLACEMENT PARTS

1	*	Replacement Cover	12	*	Hook Strip	23	1705404	Rear Header End Plug LH
2	*	Front Header	13	1703332	Hitch Pin	24	*	Rear Header
3	1705310	Front Header End Plug RH	14	1705234	Clamp Assembly (6)	25	1117958	Side Rail End Plug Assy LH
4	1705311	Front Header End Plug LH	15	*	Side Rail, Passenger's Side	26	1117959	Side Rail End Plug Assy RH
5	*	Retainer Strap	16	*	Side Rail, Driver's Side	27	1701580	Hex Nut Full Nylon Lock
6	1115745	Plastic Washer	17	1114773	Flat Spring	28	*	Extruded Header Seal
7	1703455	Square Head Cap Screw	18	1704213	Latch Assembled			
8	*	Bow Assembly	19	1703455	Cap Screw			
9	1705192	Retainer Loop	20	1705336	Header Stop			
10	1705318	Tension Adjustment Block	21	1703690	Self Drill Screw			
11	1705364	Header Insert Retainer Clip	22	1705405	Rear Header End Plug RH			

* Please specify length or make and model of vehicle.