

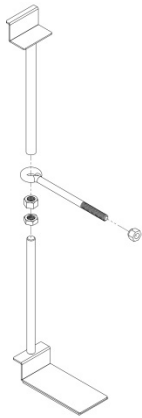


TITAN Instruction pt. no.: 99 0000 0492

Important: Please read these instructions carefully and completely before starting the installation.

TITAN™ Fuel Tanks

INSTALLATION GUIDE



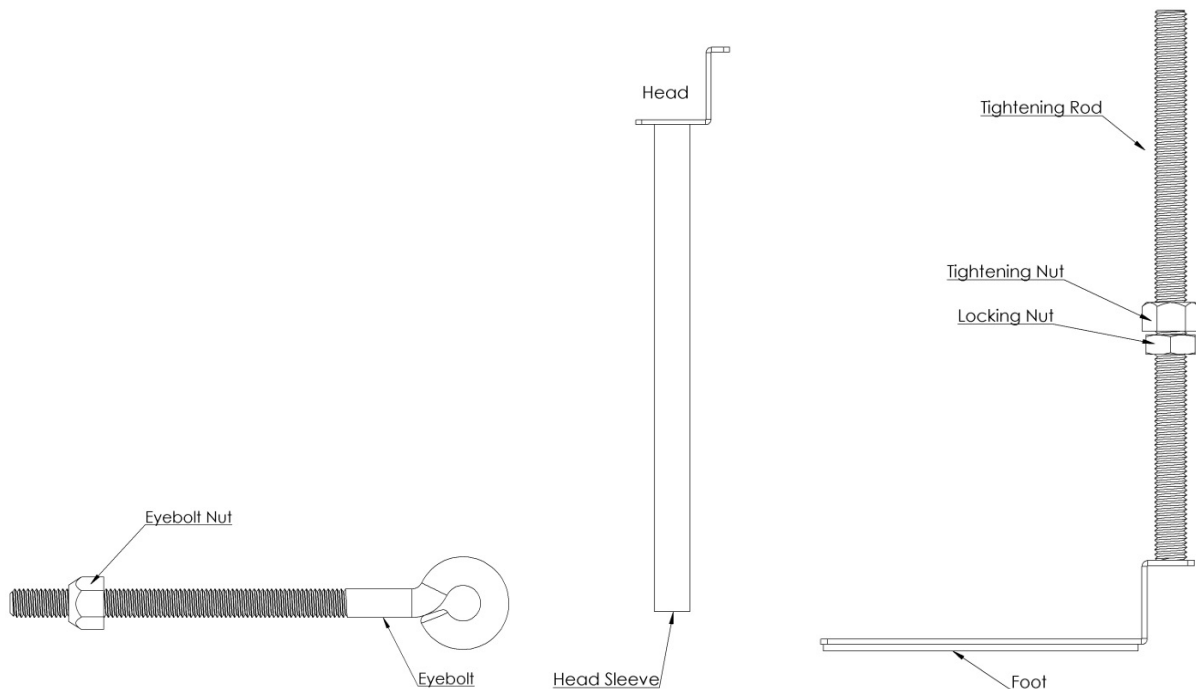
99 0133 0000: Spare Tire Buddy In-Bed Spare Tire Mounting System

Required Tools:

- 1 ea. Adjustable Wrench
- 1 ea. Utility Knife

- 1 ea. Tape Measure

Illustrated Parts List:



Step	Description
------	-------------

Assembly

- 1 Slide eyebolt onto head sleeve.
- 2 Insert threaded tightening rod into head sleeve.

Placement

- 3 Determine whether **Spare Tire Buddy** will be located in front of, or behind the fender well.
- 4 Stand spare tire against pickup box.
- 5 Mark pickup box lip at center of standing tire.
- 6 Oversized tires may have to be reversed to fit.

Installation

- 7 Insert the head underneath the lip of truck bed. **Note:** For trucks with bed liner, cut a 3 inch slit in liner 1 ½ inches from top edge of truck bed.
- 8 Place foot against bottom of truck bed.
- 9 Rotate top nut on tightening rod until foot is snug. **Tighten in pickup bed until the toe on the foot kicks up about 1 – 1 ¼”.**
- 10 Lock bottom nut tightly against top nut.
- 11 Position tire onto eyebolt.
- 12 Secure tire by tightening nut on eyebolt.

*U.S. Patent No. 6,039,226

