

TRA15252

Suspension package for trailer

INSTALLATION INSTRUCTIONS

- Create frame bracket assembly by inserting bolt #1 into countersunk hole of Timbren top plate and tack weld into place.
- Position frame bracket assembly above center line of leaf spring & weld to chassis frame.
- After weldment has cooled, mount Aeon rubber spring onto frame bracket assembly using Timbren fasteners supplied.
- Configure items #5, #6, #7 welding them together to obtain a 4" space (unloaded) between lower plate (item #5) and upper frame bracket. (Use diagrams on page 2 as a guide)
- Weld lower disc assembly to U-bolt pad.

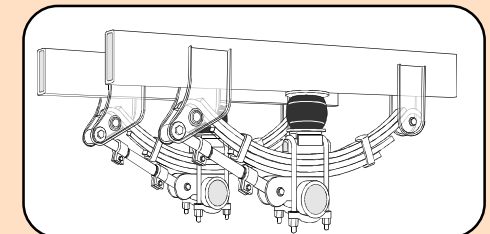
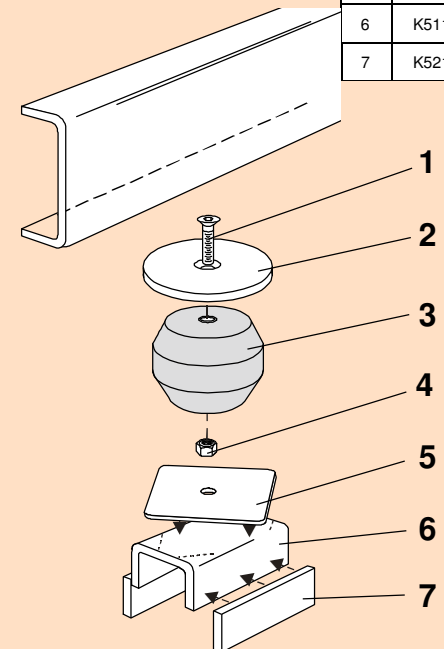
SAFETY CAUTIONS

Always refer to and follow the vehicle manufacturer's guidelines when welding or drilling during installation of this kit.

Do not exceed vehicle manufacturer's recommended axle weight rating. Check for AEON® interference with vehicle components - Under load AEON® will "expand" in diameter.

Ref. = Reference
Part = Part #.
Qty. = Quantity

Ref	Part	Qty
1	F12106-253	2
2	K54014-005	2
3	A01525-75G70	2
4	F31005-250	2
5	K52195-005	2
6	K51129-005	2
7	K52154-005	4



TRA15252

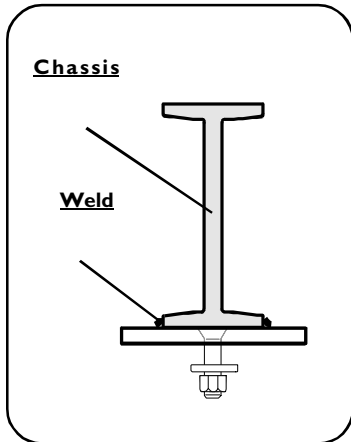
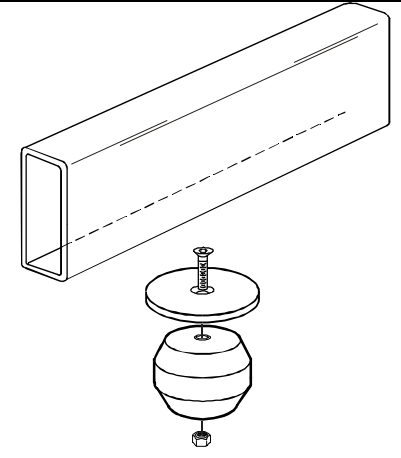
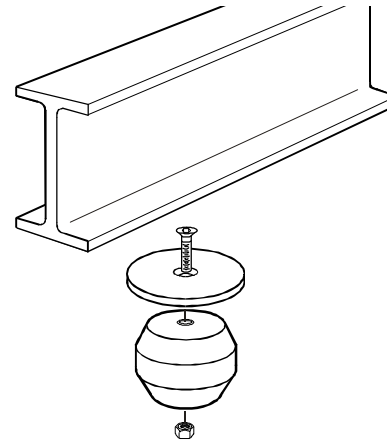
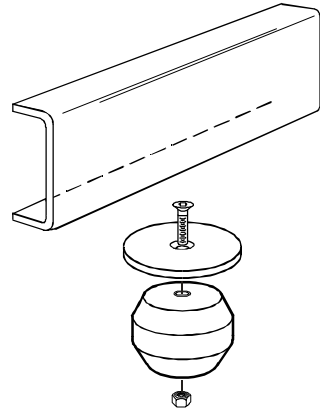


TRA15252

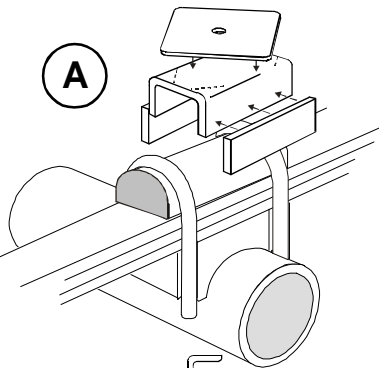
Suspension package for trailer

Note:

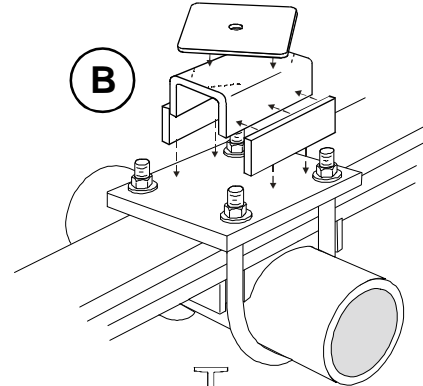
Chassis frames and suspension mounting can be mixed and match.



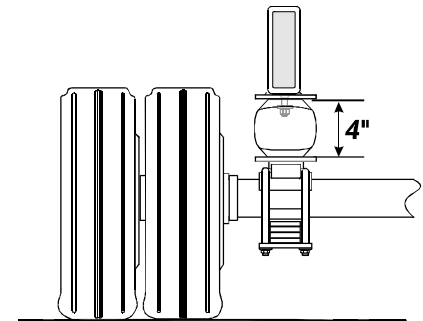
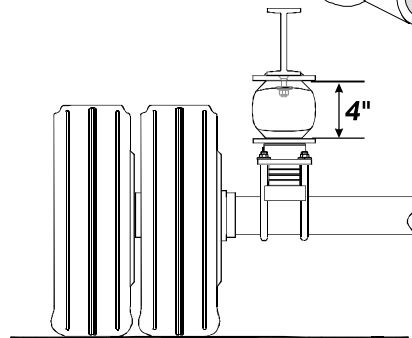
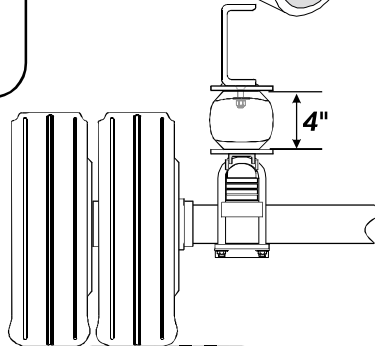
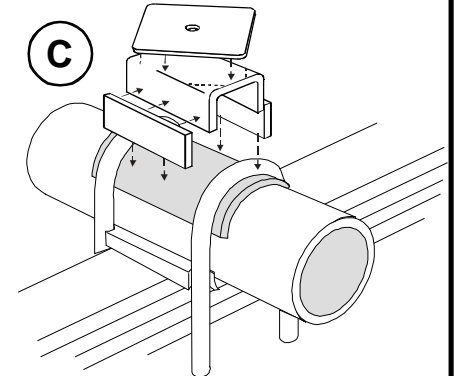
A



B



C



TRA15252

PART NUMBER	DESCRIPTION	QTY	LOCATION
F31005-250	NYLOCK LOCKNUT 1/2 UNC GR 5 Z	2	G1B
F12106-253	FHSCS 1/2 x 2-1/2 UNC GR 5 B	2	J2C
A01525-75G70	Hollow Rubber Spring	2	C18A
K54014-005	'3/8" X 6" TRA15252	2	D20F
K52195-005	'3/8" X 5" X 5"	2	D4B
K51129-005	FORMED PLATE 1-1/2 x 2-15/16 x 5 x 1/4 PAINT	2	D20F
K52154-005	'1/4" X 3" X 5" RISER SPACER	4	D20F
B90223	10-3/4 x 9-1/2 x 7 DW Carton	1	A1A
B10100	NEWSPRINT 18" ROLL	1	
B00029-010	BARCODE LABEL FOR KIT	1	

Clearance Instructions:

Rear SES Kits for Pick-Ups and Vans should have a 1/2" to 1-1/2" gap between the rubber spring and contact point when empty.

A partial load, or vehicle accessories will reduce or eliminate the gap.

Front SES kits are usually in full contact.

Medium and Heavy-Duty Trucks, Trailers and Motorhomes will be in constant contact, and have no gap.