

# REY001A

Rear suspension package

## INSTALLATION INSTRUCTIONS

- a) Create Timbren bottom support weldment.
  - 1) Measure length "L" of OEM rear axle U-bolt pad and add 1" to this measurement. Mark bottom plate #5 with this measurement "L+1" making sure it is centered on plate #5. Use this measurement to weld legs #6 to plate #5 as shown in Diagram A.
  - 2) Place bottom support weldment over U-bolts and weld legs #6 to OEM axle pad after Timbren assembly is in proper position. (see Diagram A)
- b) With vehicle unloaded, measure 6-3/4" from top of U-bolt pad (or Timbren bottom plate) to bottom of Timbren frame bracket (see Diagrams B & C)
- c) Drill holes for Timbren bracket providing for at least four 1/2" Gr.8 bolts through the bracket & frame.

### NOTES:

When positioning frame bracket make sure that the Aeon spring will rest over the center of axle pad or rest on top of the bottom support with spigots fitting into holes on the underside of the Aeon spring.

- d) Assemble Aeon rubber spring and Timbren frame bracket.
- e) Mount Timbren assembly to truck frame.

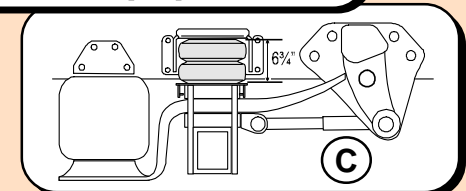
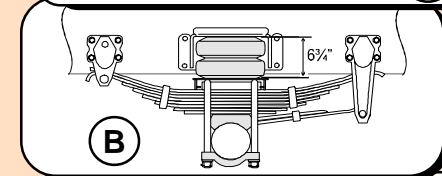
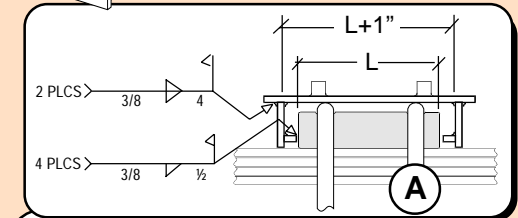
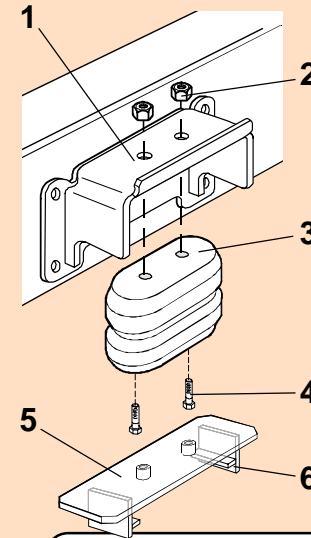
### SAFETY CAUTIONS

Ensure sufficient clearance between frame bracket & tire. Always refer to and follow the vehicle manufacturer's guidelines when welding or drilling during installation of this kit.

*Do not exceed vehicle manufacturer's recommended axle weight rating. Check for AEON® interference with vehicle components - Under load AEON® will "expand" in diameter.*

Ref. = Reference  
Part = Part #.  
Qty. = Quantity

Ref	Part	Qty
1	K51282-003	2
2	F31005-150	4
3	A00260-65D60	2
4	F11106-150	4
5	K11004-005	2
6	K11005-005	4



REY001A



## REY001A

PART NUMBER	DESCRIPTION	QTY	LOCATION
F31005-150	NYLOCK LOCKNUT 1/2 UNF GR 5 Z	4	G1D
F11106-150	HCS 1/2 x 2-1/2 UNF GR 5 Z	4	G1D
A00260-65D60	Hollow Rubber Spring	2	C17C
K51282-003	REY001A FRAME BRACKET	2	D5B
K11004-005	REY001 WELD'T (PAINTED)	2	D5A
K11005-005	REY001 WELDMENT (PAINTED)	4	D5A
B90203	16 x 9.5 x 7 CARTON	2	A3A
B10100	NEWSPRINT 18" ROLL	1	
B00029-011	BARCODE LABEL FOR KIT	2	
	1 of 2 & 2 of 2 LABELS	1 ea.	

### ASSEMBLY NOTES:

ALL COMPONENTS ARE DIVIDED IN HALF AND PACKAGED INTO TWO IDENTICAL PACKAGES.

APPLY "1 of 2" and "2 of 2" LABELS TO CARTONS

### Clearance Instructions:

Rear SES Kits for Pick-Ups and Vans should have a 1/2" to 1-1/2" gap between the rubber spring and contact point when empty.

A partial load, or vehicle accessories will reduce or eliminate the gap.

Front SES kits are usually in full contact.

Medium and Heavy-Duty Trucks, Trailers and Motorhomes will be in constant contact, and have no gap.