

TIMBREN**AUTHORIZED DEALER**

suspension package

FF150G**FORD**

Ref. = Reference
 Part = Part #.
 Qty. = Quantity

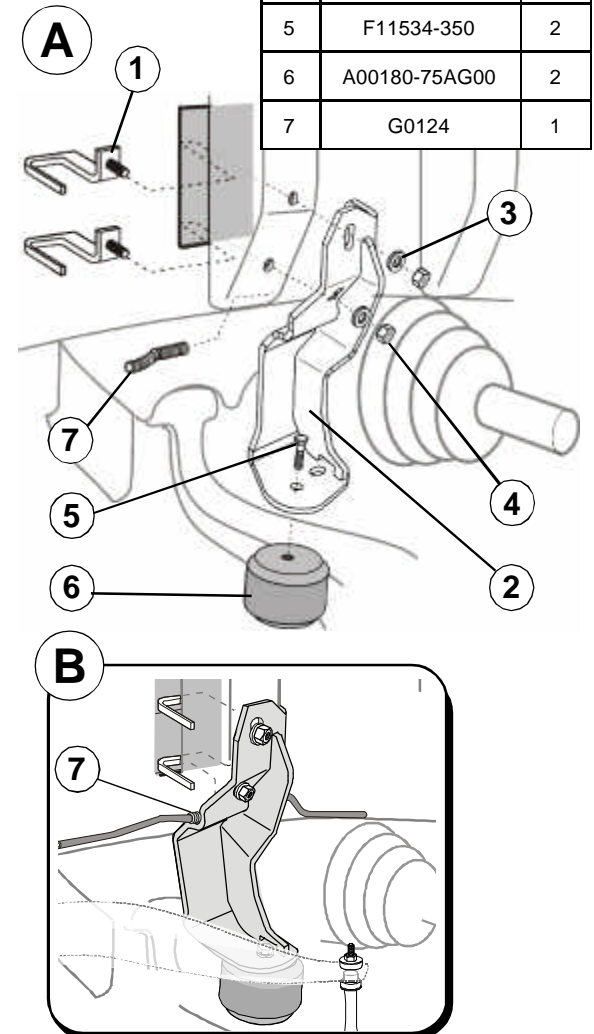
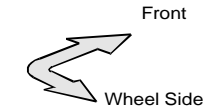
INSTALLATION INSTRUCTIONS

- Open box, Identify left and right brackets
- Securely lift front of truck, one side at a time, until corresponding wheel is off the ground. It might be easier to turn wheel to one side to create more room for installation
- Clean out any debris inside O.E. frame extension.
- Insert Aeon mounting bolt through hole of bracket from top. Do not install Aeon at this time.
- Remove O.E. bolt that holds ABS speed sensors and other attachments including brake line, gently move tubes & hoses away.
- To create a shield between brake line and metal parts, wrap Spiral-Wrap (7) around brake line (right hand side only). Slide it towards bracket until seated inside groove.
- Gently position Timbren bracket against frame extension. Brake line, on the right hand side of the truck, should securely pass below "bridge" portion of Timbren bracket.
- Insert fastener key through side opening of frame extension, pass through upper hole, until tip of bolt is out (towards the wheel).
- Pass second fastener key through frame extension, pass tip of bolt through lower hole.
- Insert washers and tighten nuts using a socket wrench.
- Use a flat wrench, hold head of Aeon mounting bolt. Locate Aeon below bracket and engage threads. Turn Aeon until tight.
- Verify position of Aeon, making sure it is directly above lower control arm.
- Torque upper nuts of Timbren bracket to 35 ft.lbs. (47 N.m.).
- Re-install (side) O.E. bolt.
- Lower vehicle.

NOTE:

Engage four wheel drive and turn wheels full lock both directions to ensure there is no interference with Timbren assembly.

Do not exceed vehicle manufacturer's recommended axle weight rating. Check for AEON® interference with vehicle components - Under load AEON® will "expand" in diameter.



Ref	Part	Qty
1	K10548-003	4
2	K10547-003	1L-1R
3	F40310-020	4
4	F31051-350	4
5	F11534-350	2
6	A00180-75AG00	2
7	G0124	1

FF150G

FF150G

PART NUMBER	DESCRIPTION	QTY	LOCATION
F31051-350	NYLOCK LOCKNUT M10 x 1.5 Gr 8.0 Z	4	I1D
F40310-020	WASHER FLAT M10 GR 4.6 Z	4	I1D
F11534-350	HCS M10 x 25 x 1.5 Gr 8.8 Z	2	I1C
G0124	Spiral Wrap - 8 Inch	1	G2A
A00180-75AG00	Hollow Rubber Spring	2	C3B
K10548-003	FF150G WELDMENT PAINTED	4	D19B
K10547LH-003	FF150G WELDMENT LH PAINTED	1	D14D
K10547RH-003	FF150G WELDMENT RH PAINTED	1	D14C
B90223	10-3/4 x 9-1/2 x 7 DW Carton	1	A1A
B10100	NEWSPRINT 18" ROLL	1	
B00029-010	BARCODE LABEL FOR KIT	1	

ASSEMBLY NOTES:

APPLY 'LEFT' LABEL TO L/H BRACKET

Clearance Instructions:

Rear SES Kits for Pick-Ups and Vans should have a 1/2" to 1-1/2" gap between the rubber spring and contact point when empty.

A partial load, or vehicle accessories will reduce or eliminate the gap.

Front SES kits are usually in full contact.

Medium and Heavy-Duty Trucks, Trailers and Motorhomes will be in constant contact, and have no gap.