

A close-up, high-angle shot of a worker in a dark industrial environment. The worker is wearing safety glasses and a yellow earplug, and is focused on a task. They are using a power tool, likely a nutrunner, to work on a metal component of a machine. The scene is lit with dramatic, low-key lighting, featuring a strong blue/cyan hue and a bright yellow light source in the background. The overall mood is professional and industrial.

# **TIGER TOOL**®

Engineered and Manufactured in North America

Have What It Takes



WHY TIGER TOOL

# Get the job done with the right tool. And the right Company.

People identify Tiger Tool as a leader in the development of Heavy-Duty Suspension and Driveline tools, but really, this only scratches the surface of our identity.

Our values are driven by the spirit of passion and ingenuity that our team brings to the table every day. We are a dynamic workforce, encompassing a variety of backgrounds and experiences, working together to achieve a common goal—develop cutting-edge tools to resolve the most frustrating challenges faced by technicians.

We believe in a higher standard of quality—not only for the final product, but for the entire journey, from conception to fruition, and the complete customer experience. It starts with an idea, or an industry challenge to be resolved. Like all great innovation, “necessity

is the mother of invention”. We either identify or are informed by the industry of a need that exists, and we take a unique approach toward resolving it. With over thirty years developing high-functioning specialty tools, we’ve established valuable relationships with technicians, fleet and service managers, and OEMs, all of whom entrust us to mitigate the challenges technicians are faced with. If there’s a problem, we can solve it. For this reason, several OEMs contact us directly should they discover a challenge servicing one of their components; there’s no one more capable or willing to resolve it.

In addition to these relationships, our team includes several mechanically inclined individuals who are sensitive to the obstacles technicians face, and they are passionate about improving their working conditions. We are a privately held specialty manufacturing company, we are not held back by fiscal budgeting restraints or annual reporting when faced with even the most unique challenges.

[Read more one page 20 >](#)

## Table of Contents

---

Universal Joints	4
Yokes	6
Axles	7
Pins & Bushings	8
Hydraulic Accessories	10
Wheel Studs	11
Steering	12
Brakes	14
Hubs	16
Combination Kits	18
Why Tiger Tool	20
15000 Adapter Chart	22

## Classification Legend

---

INTERMEDIATE  
Class 4, 5, 6



HEAVY DUTY  
Class 7 & 8



# Universal Joints

The world's greatest and original Universal Joint Puller.

Eliminates dangerous jacking, hammering and torching methods.

U-JOINT PULLER

## 10104

Disassembles even the most seized u-joints in minutes on virtually all class 4-6 intermediate trucks, school buses, farm, and light industrial vehicles.

Designed for u-joints with bearing cups 1 1/4" to 1.7" O.D..

Shipping Weight 7 lbs



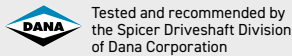
U-JOINT PULLER

## 10102

Provides ultimate brute strength for disassembling even the most seized u-joints in minutes on virtually all Class 7 and 8 trucks and machinery. Engineered for use with up to a 1" impact wrench.

Designed for u-joints with bearing cups 1 1/2" to 2.2" O.D..

Shipping Weight 12 lbs



**Application**

Dana/Spicer 1610, 1710, 1760, 1810, 1880 Series

Dana/Spicer SPL 140, 170, & 250 Life Series

Meritor/Rockwell 16N, 17N, 18N, 1710 Series

Meritor/Rockwell RPL 20, 25

Permalube Series

**Available Separately**

**10150** - Case & foam

**10101** - Maintenance Kit



10150



10101



SEVERE HEAVY DUTY U-JOINT REMOVER

## 20155

The 20155 kit provides the ultimate brute strength to easily remove even the most seized u-joints and bearing cups from Dana/Spicer SPL 350 and Meritor RPL 35 Series drivelines.

Shipping Weight 23 lbs

**Application**

Dana/Spicer SPL 350 Series drivelines

Meritor RPL 35 Series drivelines



“

I've used this tool in the past and have moved to a new shop where they use hammers and torches. I'm not about that life so I bought one for my box. I can remove a whole drive line before these guys can even get the first u-joint loose.

Kevin  
Customer

BEARING CUP INSTALLER

10201 

Install bolt-retained bearing cups on virtually all class 7 and 8 trucks and machinery. Reduces the risk of damage to needle bearings.

Shipping Weight 2 lbs



BEARING CUP INSTALLER

10217 

Install bearing cups into Dana/Spicer SPL 140, 170, and 250 "Life Series" drivelines. Predetermined "installed heights" engineered into design.

For use on quick-disconnect u-joints only.

Shipping Weight 14 lbs



Tested and recommended by the Spicer Driveshaft Division of Dana Corporation



BEARING CUP INSTALLER

10218 

Install bearing cups into Dana/Spicer SPL 350 and Meritor RPL 35 Series drivelines. Predetermined "installed heights" engineered into design.

Shipping Weight 17 lbs

Patent Pending



COMBINATION KITS

Popular Kits

Details on page 18

Severe Heavy Duty U-Joint Service Kit

20160

- 20155
- 10218



Heavy Duty U-Joint Service Kit

20150

- 10102
- 10201
- 10217



Heavy Duty Driveline Service Kit

20175

- 10102
- 10803



# Yokes

Heat treated and CNC machined from billet chrome-moly steel for strength and durability.

**Simplifies the removal of yokes on driveshafts, transmissions and rear-end differentials.**

“

Works as designed & does the job well. What more can you ask for in a product?

DW Johnson  
Customer

## YOKE PULLER

### 10803

Removes virtually all yokes with a bearing cup diameter of 1  $\frac{7}{8}$ " and 2  $\frac{3}{16}$ ". Engineered for use with a 1" impact wrench to generate over 25,000 lbs of pulling power. Designed for full and half round yokes.

**Shipping Weight 16 lbs**



Tested and recommended by the Spicer Driveshaft Division of Dana Corporation

#### Application

Yokes with a bearing diameter between 1  $\frac{7}{8}$ " and 2  $\frac{3}{16}$ "

Dana/Spicer and Meritor 1610, 1710, 1760, 1810 series

Dana/Spicer SPL 140, 170, 250 series

Meritor/Rockwell RPL 20 and 25 series



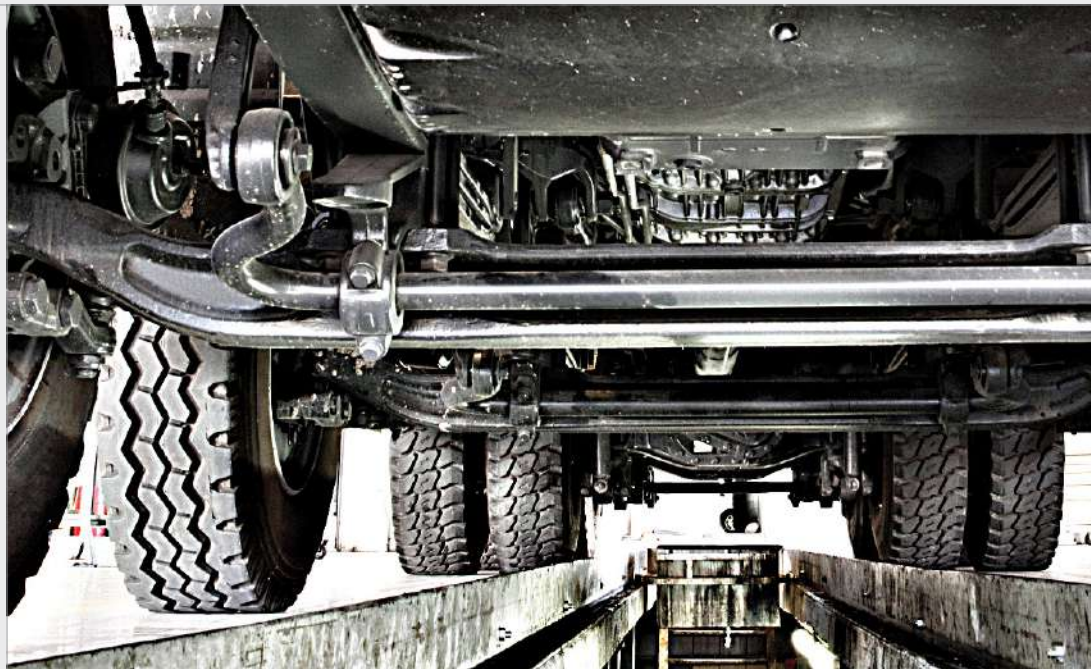
## COMBINATION KITS

### Popular Kits

Details on page 18

#### Heavy Duty Driveline Service Kit 20175

- 10102
- 10803



# Axles

Remove king pins and axle shafts in minutes.

“Saves a lot of time and a lot of money!”

Mike Stojcevski  
Customer

KING PIN PRESS

## 90150

Designed for use on straight and tapered king pins from 7/8" to 2.15" O.D.. Generates over 46,000 lbs of force and weighs only 30 lbs.

User friendly design requires just one person to operate.

**Note:** Not compatible with FL981 axles where the tie rod is cast to the spindle.

**Shipping Weight 42 lbs**

U.S. Patent No. 9,511,488

**Application**

For use on straight and tapered king pins from 7/8" to 2.15".

**Available Separately**

**90151** – Isuzu NPR & GMC/Chevrolet W-series Adapter

**90152** – 2 1/4" King Pin Clearance Plate



90150



90152



AXLE SHAFT PULLER

## 11001

Not just another way to strike the axle-shaft. Pullcams preload behind the axle flange allowing the cone washers to be released with ease. Works on medium to heavy-duty Eaton and Meritor/Rockwell drive axles.

**Shipping Weight 17 lbs**



Axle Shaft Puller includes the two most common 5/8" - 18 adapters.

**Optional adapters below**

Part #	Description
11010	Two 1/2" - 20 Adapters
11015	Two 7/16" - 18 Adapters
11020	Two 3/4" - 16 Adapters
11025	Two 1/2" - 13 Adapters
11030	Two 5/8" - 11 Adapters
11035	Two 5/8" - 18 Adapters

# Pins & Bushings

The simplest way to remove and install pins and bushings.

Reduce shop service times on jobs by up to 70%

PIN & BUSHINGS



## STEP 1

Choose from a full list of adapters referenced on [page 22](#).

Adapter Kits are required to replace pins & bushings.

ADAPTER EXAMPLE as seen on [page 22](#).

### // Peterbilt

Front Suspension	Part#
B65-6005	<b>15007</b>
B65-1017-002	

- Each OEM part number corresponds to a Tiger Tool Adapter Part number. This is the adapter you need for your particular job.
- This is the OEM part number found on the bushing(s) you are wishing to remove/service.

## STEP 2

Purchase the Pin & Bushing Starter Kit

15000

Services both rubber-isolated and threaded pins & bushings while the suspension remains on the vehicle.

Shipping Weight 40 lbs

U.S. Patent No. 8627557

- No need to handle or remove heavy suspension assemblies
- 20 tons of pulling power for efficient pin removal and installation
- Manufactured from high-grade steel for strength and durability
- Black oxide finish resists corrosion
- Removal of the spring packs from the axle is no longer required

“ This has proven to be one of the best purchases we have ever made for commercial applications

Tyler K.  
Customer





**STEP 3****Choose a 10,000 PSI hydraulic pump**[Details on page 15](#)**70129**

6' hose &amp; gauge.

[Shipping Weight 22 lbs](#)**70130**

12' hose &amp; gauge.

[Shipping Weight 23 lbs](#)

70129

70130

**STEP 4****Ensure your adapter kits are kept neat and organized with an optional Case & Foam****15998**

Various front suspension kits

**15999**

Various front &amp; rear suspension kits

[Shipping Weight 7 lb](#)

15998

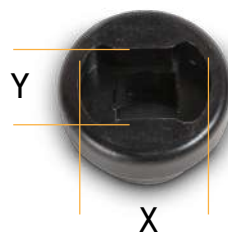
15999

## LEAF SPRING PIN SOCKETS

**15111** 

Remove and install even the most stubborn threaded leaf spring and shackle pins.

Also available separately.

**15100** – X 1.530" Y 0.653"**15101** – X 1.097" Y 0.647"**15102** – X 1.150" Y 0.760"**15103** – X 0.945" Y 0.355"**15104** – X 1.460" Y 1.260"**15105** – X 0.880" Y 0.305"**15106** – X 1.265" Y 0.635"

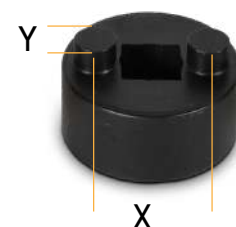
15100

15101

15102

15104

15106



15103

15105

[Shipping Weight 1 lb](#)

# Hydraulic Accessories

Innovative. Professional. Reliable.

“

I have been using Tiger tools for about 20 years, they have never let me down, the tools do exactly what they are designed for, so I will always purchase Tiger tools if needed.

Claude Monjo  
Customer

## PUMP

### 70129 70130

A cost effective solution that delivers the performance and quality you expect from BVA. The high strength reinforced alloy reservoir is lightweight and corrosion resistant which means longer service life and greater portability.

70129 – Includes 6' hose & gauge.  
**Shipping Weight 22 lbs**

70130 – Includes 12' hose & gauge.  
**Shipping Weight 23 lbs**

- Pressure relief valve for overload protection
- Suggested air pressure range: 90 – 175 psi / 6 – 12 bar
- Designed to be used with single acting cylinders
- 1.5L oil capacity
- Dust cover protection for the release control valve
- Maximum working pressure: 10,000 psi / 700 bar



## HYDRAULIC CYLINDER

### 17202

Generating 20 tons of power, the 17202 is the cylinder used in our 15000 kit. The hydraulic cylinder on its own can replace the need for the 15000 kit when used together with the 15040, 15041, 15050 and 15060 adapter kits.

- 20-ton cylinder capacity for lifting or pushing
- Single-acting hydraulic cylinder with a 2" stroke
- Black oxide finish for corrosion resistance

**Note:** Requires 10,000 PSI hydraulic pump.

**Shipping Weight 19 lbs**



## HOSE CONNECTOR

### 70250

Replacement male and female hose connectors for Tiger Tool's hydraulic products.

Also available individually.

**Kit Includes**  
70250-1 – Female  
70250-2 – Male

**Shipping Weight 1 lb**



# Wheel Studs

Engineered to exceed the industry's demanding needs.

Eliminate the risk of damage to hubs, seals, wheel bearings and studs.

“

The tools from Tiger Tool are well designed and the staff is always there to help me decide what works best for my needs.

Gaylen Greer  
Customer

## HYDRAULIC REMOVER & INSTALLER

### 10608

Provides both fast and effective removal and installation of even the most seized wheel studs on most drum brake applications.

**Note:** Requires 10,000 PSI hydraulic power source—See page 10

#### Application

Drum brakes with  $\frac{3}{4}$ ", 22mm &  $1\frac{1}{8}$ " wheel studs

Shipping Weight 42 lbs



## HYDRAULIC REMOVER & INSTALLER

### 10616

Provides fast and effective removal and installation of even the most seized wheel studs on most disc and drum brake applications.

**Note:** Requires 10,000 PSI hydraulic power source—See page 10

#### Application

Disc & drum brakes with  $\frac{3}{4}$ ", 22mm &  $1\frac{1}{8}$ " wheel studs

Shipping Weight 48 lbs

U.S. Patent No. 10307901



## MANUAL REMOVER & INSTALLER

### 10611

Manual version of 10608. Engineered for use with up to a  $\frac{3}{8}$ " impact wrench.

#### Application

$\frac{3}{4}$ ", 22mm &  $1\frac{1}{8}$ " wheel studs

Shipping Weight 39 lbs



# Steering

Engineered using high quality alloy.  
Tough. Rugged. Dependable.

“ Absolutely works  
flawlessly, every time  
we’ve used it we haven’t  
had any problems taking  
off any pitman arms  
—It’s money!

Tanner Garbe  
Customer

## PITMAN ARM PULLER

### 10385

Designed to remove pitman arms on Sheppard M100 gearboxes. Can be used with up to a 3/4" impact wrench. Max glove opening is 4.1".

Eliminates dangerous hammering and cutting-torch methods.

High strength steel casting designed for high capacity pulling.

Shipping Weight 5 lbs



## TIE ROD SOCKET

### 10353

Provides quick removal or adjustment of tie rod ends without the risk of flaring or rounding out your socket on virtually all heavy duty trucks.

- I.D. 3" / slot width 1 1/4"
- CNC machined from billet, high strength alloy steel
- 3/4" drive

Shipping Weight 4 lbs



## PITMAN ARM SPREADER

### 10386

Designed for use on 2-ton trucks and larger. The high strength pulling arms fit various widths of pinch-bolt style pitman arms for easy installation and removal.

Shipping Weight 3 lbs



TIE ROD END REMOVERS

# 10310



These popular Tie Rod End Removers provide a safe and effective means to "shock" tie rod ends loose without the risk of damage to threaded areas, rubber seals and grease nipples.

Also available separately.

Shipping Weight 3 lbs

- 10301 - 7/8" - 14"
- 10302 - 3/4" - 16"
- 10304 - 20mm x 1/2"

Available Separately  
10306 - 16mm X 1 1/2" (not in kit)



10306



10302

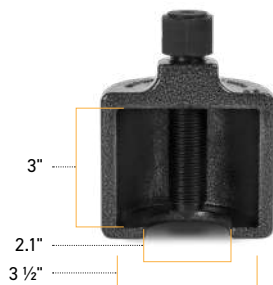
PITMAN ARM PULLER

# 10388



Designed for use on vehicles with a nut release pitman arm. Max glove opening is 3 1/2".

Shipping Weight 5 lbs



PITMAN ARM PULLER

# 10389



Designed to remove pitman arms on Sheppard M110 gearboxes. May be used with up to a 3/4" impact wrench.

Eliminates dangerous hammering and cutting-torch methods.

High strength steel casting designed for high capacity pulling.

Shipping Weight 11 lbs



STRUT COMPRESSOR

# 90102



Safely and efficiently removes and installs the spring-over steering stabilizer found on most self-steering axles. Engineered for use with up to a 1/2" impact wrench.

Shipping Weight 9 lbs

U.S. Patent No. 10,005,175



COMBINATION KITS

## Popular Kits

Details on page 18

### Pitman Arm Service Kit 20387

- 10385
- 10386



### Pitman Arm Master Service Kit 20388

- 10385
- 10386
- 10388
- 10389



# Brakes

Increase productivity with less equipment down-time.

“  
...used this tool [16002] the first time last week on a steer axle brake job. Paid for itself that one job...”

Nick G.  
Customer

## ANCHOR PIN PRESS

### 16002

Remove brake anchor pins and bushings on virtually all 16 ½" S-Cam trailer and tractor "Q" brake systems easily and safely in just minutes. Compact design ensures the job can be done professionally without the removal of the hub assembly.

- No need to remove the hub or dust shield
- Rigid C-frame with 10-ton capacity
- Manufactured from high-grade steel for strength and durability

**Shipping Weight 11 lbs**



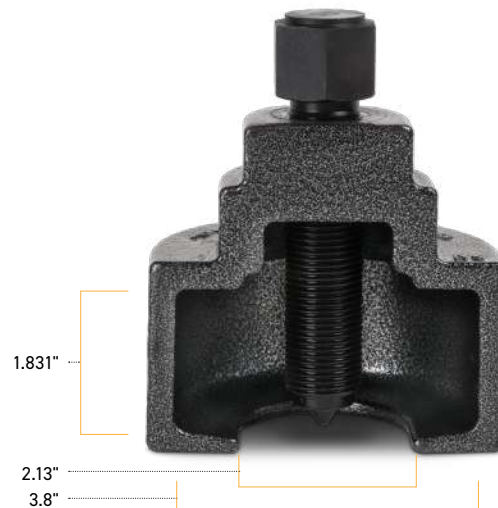
## SLACK ADJUSTER PULLER

### 10406

Fits most makes and models of manual type slack adjusters.

- Eliminates dangerous hammering and cutting torch methods
- Can be used with a ½" impact wrench
- High strength steel casting designed for high capacity pulling

**Shipping Weight 6 lbs**



## SLACK ADJUSTER PULLER

**10407** 

Fits virtually all Meritor/Rockwell automatic slack adjusters.

**Shipping Weight 6 lbs**

**Available Separately**  
**10401** – Low Profile Forcing Screw



## SLACK ADJUSTER PULLER

**10409** 

Fits virtually all Gunité, Brunner and Bendix automatic slack adjusters.

- Eliminates dangerous hammering and cutting torch methods
- Can be used with a ½" impact wrench.
- High strength steel casting designed for high capacity pulling

**Shipping Weight 7 lbs**

**Available Separately**  
**10401** – Low Profile Forcing Screw



## SLACK ADJUSTER PULLER

**10410** 

Fits virtually all Haldex automatic slack adjusters including left offset, right offset and standard elongated arm designs from either side.

- Eliminates dangerous hammering and cutting torch methods
- Can be used with a ½" impact wrench
- High strength steel casting designed for high capacity pulling

**Note:** Will not fit some Hendrickson Air Ride Suspensions.

**Shipping Weight 8 lbs**

**Available Separately**  
**10401** – Low Profile Forcing Screw



## CLEVIS PIN PRESS

**10501** 

Works on all makes and models of truck and trailer slack adjuster brake clevises. The forcing screw instantly shears the cotter pin as the clevis pin is removed.

- Eliminates dangerous hammering and cutting torch methods

**Shipping Weight 4 lbs**



## SLACK ADJUSTER ROD PIN PRESS

**10502** 

Stays in position over the adjuster rod clevis pin with a spring loaded plunger. The cotter pin is instantly sheared off as the 3/16" clevis pin is easily removed.

**Shipping Weight 1 lbs**



# Hubs

Innovative design that gets the job done with minimal effort.

**Black oxide finish for increased wear and corrosion resistance.**

“

If there's a way to break a tool, I'll find it. I've never broken a Tiger Tool. They are far superior to what is advertised.

Richard Williamson  
Customer

## PULLER

### 10903

Safely and effectively removes seized hubs on virtually all front steer, drive axle and trailer hubs including ConMet Preset, Dana /Spicer LMS and Meritor Unitized.

Includes the two most common 22mm (10630) stud adapters.

#### Optional Adapters

- 10610 – 1 1/8" - 16 R.H.
- 10615 – 1 1/8" - 16 L.H.
- 10620 – 3/4" - 16 R.H.
- 10625 – 3/4" - 16 L.H.
- 10635 – M20 x 1 1/2" R.H.

**Shipping Weight 25 lbs**



## SOCKETS

### 18200

Machined from billet steel. Sockets have a 3/4" square drive. Axle nut sockets also available individually.

#### Kit Includes

- 18120 – 2" 6 point socket
- 18126 – 2 3/4" 6 point socket
- 18131 – 3 1/8" 6 point socket
- 18137 – 3 3/4" 6 point socket
- 18140 – 4" 6 point socket

**Shipping Weight 34 lbs**

18010 – 3 1/2" 8 point socket (not in kit)

**Shipping Weight 7 lbs**





**STEP 1 A**

**Choose: Hydraulic or Non-Hydraulic Starter kit**



**Bearing Race Starter Kit**

**10908**

Bearing races can now be removed and installed precisely in minutes utilizing bearing specific adapters and a shop press. The design of the split ring clamp allows the tool to grip virtually the entire diameter of the race. The shop press is used to apply force to the split ring/wedge assembly, pressing the bearing race out with little effort.

- Eliminates injuries due to hammering, punching and welding methods
- Manufactured from high-grade steel for strength and durability

**Shipping Weight 18 lbs**

Patent Pending



**Hydraulic Bearing Race Starter Kit**

**10909**

Bearing races can now be removed and installed precisely in minutes while the wheels remain on the hub. This is a hydraulically powered kit that horizontally services bearing races when used together with bearing specific adapters.

- Eliminates injuries due to hammering, punching and welding methods
- Manufactured from high-grade steel for strength and durability

**Shipping Weight 47 lbs**

Patent Pending



**STEP 1 B**

**Choose a hydraulic pump to operate the 10909.**

Only for 10909 Hydraulic Bearing Race Starter Kit. [Details on page 15](#)

**70129**

BVA pump with 6' hose

**70130**

BVA pump with 12' hose



**STEP 2**

**Choose an adapter kit**

Select an adapter kit that corresponds with the OEM bearing race set/number.

Part #	Bearing Race Set		
10915	Set 401/402/430 Adapter	10924	Set 424 Adapter
10916	Set 403/404/429/433 Adapter	10925	Set 418/419/420 Adapter
10917	Set 412/413/427 Adapter	10926	Set 421/422 Adapter
10918	Set 414 Adapter	10927	Set 411/426 Adapter
10919	Set 415 Adapter	10928	Set 405 Adapter
10920	Set 423 Adapter		
10921	Set 406 Adapter		
10922	Set 409/410/416 Adapter		
10923	Set 408 Adapter		

**Shipping Weight 8 lbs each**



# Combination Kits

Save even more time and money with our all-in-ones.

Stay organized with a high density foam-filled case included with all Combination Kits.

U-JOINT SERVICE KIT

## 20102

**Kit Includes:**

- 10102 – Heavy Duty Universal Joint Puller
- 10104 – Intermediate Universal Joint Puller
- 10217 – Bearing Cup Installer
- 10201 – Bearing Cup Installer

Shipping Weight 39 lbs



DRIVELINE SERVICE KIT

## 20175

**Kit Includes:**

- 10102 – Heavy Duty Universal Joint Puller
- 10803 – Yoke Puller

Shipping Weight 28 lbs



HEAVY DUTY U-JOINT SERVICE KIT

## 20150

**Kit Includes:**

- 10102 – Heavy Duty Universal Joint Puller
- 10201 – Bearing Cup Installer
- 10217 – Bearing Cup Installer

Shipping Weight 33 lbs



TECHNICIAN KIT

## 20201

**Kit Includes:**

- 10102 – Heavy Duty Universal Joint Puller
- 10201 – Bearing Cup Installer
- 10301 – Tie Rod End Remover
- 10406 – Manual Slack Adjuster Puller
- 10407 – Meritor/Rockwell Automatic Slack Adjuster Puller

Shipping Weight 32 lbs



“Great products for every application.”

Joe S.  
Customer

## TECHNICIAN KIT

20301 **Kit Includes:**

- 10102 – Heavy Duty Universal Joint Puller
- 10201 – Bearing Cup Installer
- 10301 – 7/8" - 14 Tie Rod End Remover
- 10406 – Manual Slack Adjuster Puller
- 10501 – Brake Clevis Pin Press

Shipping Weight 29 lbs



## PITMAN ARM SERVICE KIT

20387  **Kit Includes:**

- 10385 – Sheppard M100 Pitman Arm Puller
- 10386 – Pitman Arm Spreader

Shipping Weight 11 lbs



## PITMAN ARM MASTER SERVICE KIT

20388  **Kit Includes:**

- 10385 – Pitman Arm Puller (M100)
- 10386 – Pitman Arm Spreader
- 10388 – Pitman Arm Puller Intermediate
- 10389 – Pitman Arm Puller (M110)

Shipping Weight 30 lbs



## SEVERE HEAVY DUTY U-JOINT SERVICE KIT

20160 

The Severe Heavy Duty U-Joint Puller and Bearing Cup Extractor work as a system to remove u-joints and bearing cups found on Dana/Spicer SPL 350 and Meritor RPL 35 Series drivelines. The Bearing Cup Installer utilizes predetermined "installed heights" to ensure bearing cups are installed correctly every time.

**Kit Includes:**

- 20155 – Severe Heavy Duty U-Joint Removal Kit
- 10218 – Severe Heavy Duty Bearing Cup Installer

Shipping Weight 41 lbs



## TECHNICIAN KIT

20401 **Kit Includes:**

- 10102 – Heavy Duty Universal Joint Puller
- 10201 – Bearing Cup Installer
- 10301 – 7/8" - 14 Tie Rod End Remover
- 10409 – Gunite, Brunner, and Bendix Automatic Slack Adjuster Puller
- 10410 – Haldex Automatic Slack Adjuster Puller

Shipping Weight 35 lbs



## SLACK ADJUSTER SERVICE KIT

20602 **Kit Includes:**

- 10406 – Manual Slack Adjuster Puller
- 10407 – Meritor/Rockwell Automatic Slack Adjuster Puller
- 10409 – Gunite/Brunner/Bendix Automatic Slack Adjuster Puller
- 10410 – Haldex Automatic Slack Adjuster Puller
- 10501 – Brake Clevis Pin Press
- 10502 – Slack Adjuster Rod Pin Press

Shipping Weight 36 lbs



## WHY TIGER TOOL

# Tiger Tool has come to be synonymous with a level of quality technicians have come to rely upon.

**Continued from page 2 >**

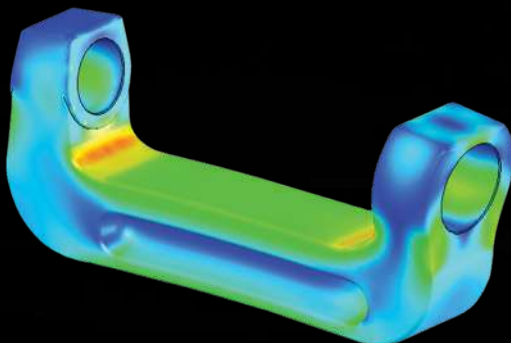
Once it's been determined that a need exists, our team of Product Developers get to work. Through collaborative brainstorming sessions and exhaustive research, various solutions are explored. Upon development of the best computer-generated design, a computer generated stress analysis is completed before a working proto-type is developed for real-world testing. Our approach to research and development, which emphasizes safety, innovation and quality, empowers our team to design tools without limiting their creativity; the end result speaks for itself. Our willingness to provide solutions for the most specialized problems has netted us a collection of unique products that you simply can't find anywhere else—and we think

that's pretty cool. Every Tiger Tool is developed with a straight forward design that's easy to use and capable of withstanding the toughest conditions. We won't sacrifice quality, and we don't limit innovation.

With an approved design in place and finalized engineering drawings in hand, our production team takes over. Located directly below our R&D, sales, marketing and accounting departments, our manufacturing department is comprised of numerous state-of-the-art CNC machines. We've made substantial investments in machinery and equipment to secure our sustainability, while continuing to meet our evolving production demands.

Our Production Leaders select the appropriate machining center, design fixturing, and program the work for maximum efficiency. Work orders are issued for raw materials, heat treatment, coatings, and other final finishing details in anticipation of each part being scheduled for production. Parts coming off the machine are checked to ensure that correct specs and tolerances are maintained. We experience exceptional value in having every department working together under one roof. In the event an engineering drawing needs revision, the process is seamless and production is virtually uninterrupted. We employ Red Seal Certified CNC Machinists who take great care and pride in the components they produce. They make a significant investment in energy, dedication and ongoing training towards ensuring every piece is built to Have What it Takes.

We believe in the human touch. With the manufacturing process complete, machined components are handed off to Assembly. Every tool is hand-assembled and hand-packed by people with substantial mechanical industry experience and a thorough understanding of the way each tool works. We believe this is the best way to ensure every tool is built to a standard, not just a price.



At Tiger Tool, quality extends beyond our tools and into the service we provide. Whether you prefer to shop online, over the phone, or at your local dealer, we go to great lengths to ensure our customers receive an exceptional experience. When you call us, you speak to a real person—no confusing company directories, no need to dial one, just real people eager to respond to your needs.

provide the best customer experience. At Tiger Tool, working relationships extend beyond departments. We value teamwork and foster an environment of collaboration.

Even beyond the point of purchase, our customers can attest to the continued support they receive. Our products are built to surpass our customers' requirements

get the job done safer and easier, and that no technician should have to face unnecessary risks. It's our unwillingness to compromise, and our pride of excellence that sets Tiger Tool apart.

Backed by over thirty-five years of industry experience and a team of dedicated employees, Tiger Tool has come to be synonymous with a level of quality technicians rely upon. In all things we do, we strive to do them the right way—whether that's the easy way or not. We are a dedicated team of people who take a great deal of joy in meeting the needs of our Customers and improving the lives of Technicians.

## Backed by over thirty years of industry experience and a team of dedicated employees...

Prefer to shop locally? We have dealers across Canada, the US and Australia ready to help you and provide a face-to-face shopping experience. We value approachability and believe you should speak directly to whomever can best meet your needs, whether that's our General Manager, the head of R&D or one of our knowledgeable Sales Associates. Because our entire Company operates out of one facility, our customer service team has access to every person and tool needed to

—and if they don't, we have your back. We back our tools with a comprehensive warranty and strive to make this process as simple as possible. If our product doesn't work for a specific application, tell us. If our Product Designers can make something better, they will. Our tools are designed to make technicians' jobs easier by decreasing down-time and improving safety and productivity. Anytime you're servicing heavy duty equipment, there's an inherent risk of injury; we believe there's a way to



# 15000 Adapter Kit Chart

## // Advanced Mixer

Front Suspension	Part#
BSA120-5	<b>15010</b>
BSL120-5	

## // Arvin Meritor

Rear Suspension	Part#
R303868	<b>15012</b>
MR782	<b>15030</b>
E4410A	<b>15080</b>

## // Aurora Trailer

Rear Suspension	Part#
TRB6822	<b>15012</b>
TRB6822UB	
NEW900-08-149	<b>15080</b>

## // Automann

Front Suspension	Part#
M5212	<b>15004</b>
MTB160	
M1214	<b>15009</b>
OGB-RNK	<b>15010</b>
MPB60	
M5336	
M5274	
M5308	
MR894	<b>15011</b>
MR894UB	
MR624	<b>15015</b>
M5316	<b>15016</b>
MR622	
M5413	<b>15017</b>
MR655	<b>15018</b>
MR832	<b>15025</b>
MR772	<b>15031</b>
MR772UB	

## // Automann

Rear Suspension	Part#
MR620	<b>15012</b>
MR620UB	
M5413	<b>15017</b>
TRB5703	<b>15080</b>

Trailer Suspension	Part#
TRB5912	<b>15040</b>
MHS745	<b>15041</b>

## // Dayton

Front Suspension	Part#
327-434	<b>15004</b>
TB-68	
330-125	
327-306	
TB-80	<b>15005</b>
TB-78	
327-533	
RB-249	<b>15006</b>
RB-328	<b>15007</b>
RB308	<b>15008</b>
RB-295	<b>15009</b>
RNK-BM	<b>15010</b>
327-480	
327-446	
322-141	
327-483	
RB-324	<b>15011</b>
RB-330	
RB-189	<b>15015</b>
327-481	<b>15016</b>
334-717	
RB-188	
327-543	<b>15017</b>
RB-263	<b>15031</b>
RB-211	<b>15032</b>
RB-233	
334-1628	<b>15041</b>

## // Dayton

Rear Suspension	Part#
321-265	<b>15012</b>
321-265U	
RB-187	
RB-268	<b>15030</b>
321-231	<b>15080</b>
321-231U	

Trailer Suspension	Part#
334-1576	<b>15040</b>
334-1628	<b>15041</b>

## // Dayton

Trailer Suspension	Part#
334-1576	<b>15040</b>
334-1628	<b>15041</b>

## // Dyco

Front Suspension	Part#
DT1145	<b>15006</b>
DT1474	<b>15007</b>
DT1477	<b>15008</b>
DT1473	<b>15009</b>
DT1950	<b>15015</b>

Rear Suspension	Part#
D424	<b>15012</b>
D424S	
D448	<b>15080</b>
DT1501	

Trailer Suspension	Part#
DT1610	<b>15041</b>
DT1611	

## // Euclid

Rear Suspension	Part#
E-3868	<b>15012</b>
E-4410A	<b>15080</b>

Trailer Suspension	Part#
E-10729A	<b>15040</b>

## // Flagg

Front Suspension	Part#
B1372-59	<b>15004</b>
E484-59	
TB68	
B1363-59	
TB78	<b>15005</b>
B1491-96	
RB249	<b>15006</b>
RB328	<b>15007</b>
RNK-OGB	<b>15010</b>
PB18	
B1434-55	
B1403-75	
RB189	<b>15015</b>
B1424-62	<b>15016</b>
LNC24MM	
RB188	
RB263	<b>15031</b>
RB211	<b>15032</b>
RB233	

Rear Suspension	Part#
C889	<b>15012</b>
RB187	
RB268	<b>15030</b>
N124	<b>15080</b>

Trailer Suspension	Part#
HT245	<b>15040</b>
HT249	<b>15041</b>

## // Ford

Rear Suspension	Part#
C3TZ-5780A	<b>15010</b>
BSA120-6	
BSL120-6	
BSG120-6	

## // Freightliner

Front Suspension	Part#
16-12399-001	<b>15010</b>
16-12373-000	
BSA120-9	
BSL120-9	
BSG120-9	
16-14603-000	<b>15031</b>
16-17194-000	
16-17770-000	
16-18023-000	
680-322-01-05	<b>15032</b>
680-322-01-50	

Rear Suspension	Part#
16-18213-000	<b>15017</b>
16-18227-000	
16-16412-000	<b>15030</b>
16-18035-000	
681-325-02-50	
681-325-01-50	
13962	
HLD900008149	<b>15080</b>
WCM11223	

## // Gaff

Front Suspension	Part#
11758	<b>15006</b>
11767	<b>15007</b>
11763	<b>15008</b>
11753	<b>15009</b>
12041	<b>15015</b>
12043	<b>15016</b>
11094	<b>15031</b>
11066	<b>15032</b>

Rear Suspension	Part#
13528	<b>15012</b>
13513	
11083	<b>15030</b>
14533	<b>15080</b>

Trailer Suspension	Part#
13628	<b>15040</b>



**The 17202 Hydraulic Cylinder is only required when using 15040, 15041, 15060 & 15050 Adapters.**

The 15000 Pin & Bushing Starter Kit can utilize every Tiger Tool Adapter Kit.

// Hino

Front Suspension	Part#
52067	<b>15025</b>
49305-0290	
49305-0290A	
493051730A	

// Hendrickson

Front Suspension	Part#
HDR 30057 007	<b>15010</b>
RB-341	<b>15018</b>
52541	
52067	<b>15025</b>
Rear Suspension	Part#
49210	<b>15012</b>
64400-005L	
66649-005	
52296	<b>15030</b>
65381	
60387	
60383-000	
079239-000	<b>15033</b>
34013-107	<b>15042</b>
34013-114	
34013-116	
34013-117	
Trailer Suspension	Part#
S-24691	<b>15040</b>
S-26321	<b>15041</b>

// Holland

Rear Suspension	Part#
90008149	<b>15080</b>

// International

Front Suspension	Part#
52067	<b>15010</b>
49305-0290	
49305-0290A	
493051730A	
1661976C3	
3511254C1	
BSA120-9	
BSL120-9	
BSG120-9	
1671766C1	
BSA120-6	
BSL120-6	
BSG120-6	
3533233C1	<b>15020</b>
Rear Suspension	Part#
3538115C1	<b>15030</b>
2507718C1	<b>15080</b>
90008149	

// Jost

Jost Pin	Part#
JSK790111-03	<b>15060</b>
JSK37U	
JSK37UA	
JSK37US	
JSK37UW	

// Kenworth

Front Suspension	Part#
5295	<b>15004</b>
5296	
K178-378	
BSG0068-1	
BSG5295-1	
B65-6008	<b>15005</b>
B13-1000	
B13-1002	
B65-1008	
B65-1001	<b>15006</b>
B65-1017-003	
B65-6005	<b>15007</b>
B65-1007	<b>15008</b>
B65-1012	
B65-1013	<b>15011</b>
B65-6006	

// Mack

Front Suspension	Part#
10QK254M2	<b>15015</b>
10QK253M	<b>15016</b>
171AM8	
43RU297M	
10QK253	
43RU297M	<b>15032</b>
Rear Suspension	Part#
10QK260	<b>15012</b>
5462-11223	<b>15080</b>

// MCI

Rear Suspension	Part#
12L-5-94	<b>15012</b>

// Neway

Rear Suspension	Part#
900 08 149	<b>15080</b>
90008151	<b>15081</b>
90008252	
AD 123/246/369	
AD 126/252/378	

// Peterbilt

Front Suspension	Part#
B65-6005	<b>15007</b>
B65-1017-002	
B65-1017-001	<b>15009</b>
02-01561	<b>15010</b>
02-01805	
02-01781	
02-1767	
02-1781	
BSA120-9	
BSL120-9	
BSG120-9	
B651013	<b>15011</b>
B656006	
Rear Suspension	Part#
02-27723	<b>15012</b>
020117461	
52296	<b>15030</b>

// PAI

Front Suspension	Part#
FBG-4963	<b>15015</b>
FBG-5167	<b>15016</b>

// Sterling

Front Suspension	Part#
F7HZ-5780DB	<b>15010</b>
BSA120-9	
BSL-120-9	
BSG120-9	
Rear Suspension	Part#
HLD90008149	<b>15080</b>
WCM11223	

// Stoughton

Rear Suspension	Part#
NW900-08-149	<b>15080</b>

// Uro

Front Suspension	Part#
TD5920	<b>15004</b>
TD188	<b>15016</b>

// Volvo

Front Suspension	Part#
20747781	<b>15005</b>
20523026	
1075724	
1076334	
1075723	
85134672	
695 85134072	
20789250	<b>15018</b>
20908841	
Rear Suspension	Part#
NEW90008149	<b>15080</b>
WCM11223	

// Wabash

Rear Suspension	Part#
NEW900-08-149	<b>15080</b>

// Watson & Chalin

Rear Suspension	Part#
11223	<b>15080</b>

// Western Star

Rear Suspension	Part#
16-18213-000	<b>15017</b>