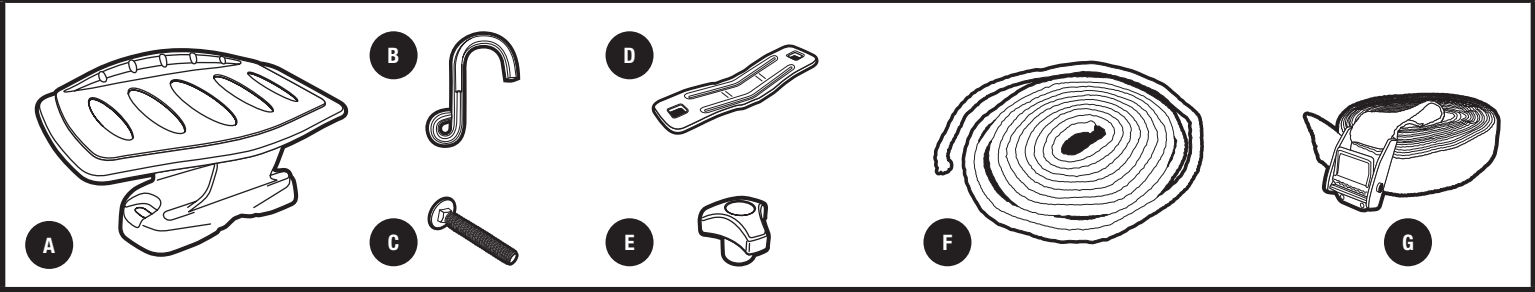
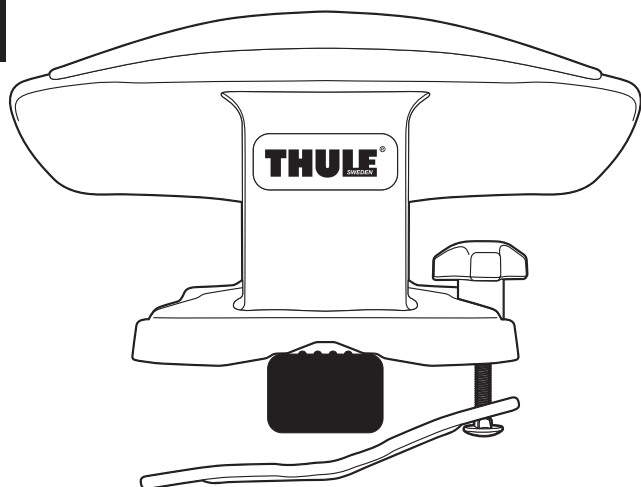


PARTS INCLUDED



part	description	part number	qty.
A	saddle	753-3565	4
B	hook	853-5465	2
C	carriage bolt M6 x 50mm	915-0650-31	8
D	metal bracket	853-5513	4
E	3 wing knob	753-0745	8
F	1/4" rope	853-5466	2
G	strap	753-2030-04	2

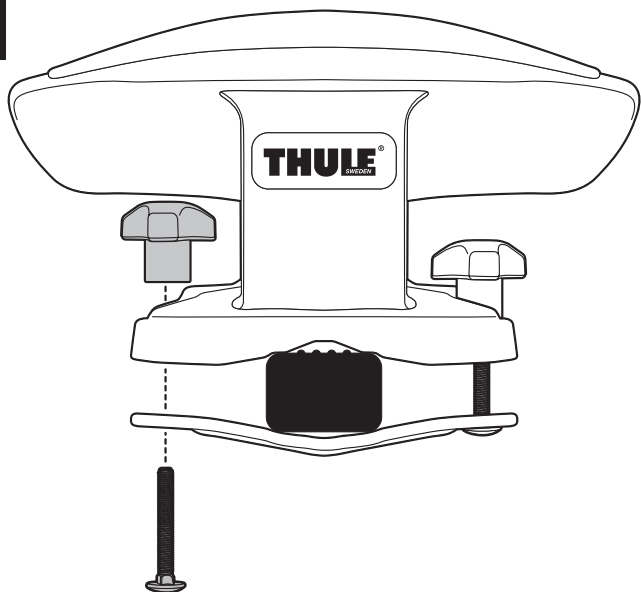
1



- Insert carriage bolt through bracket and assembly base into wing knob. Tighten loosely.

- Place assembly onto bar as shown.

2

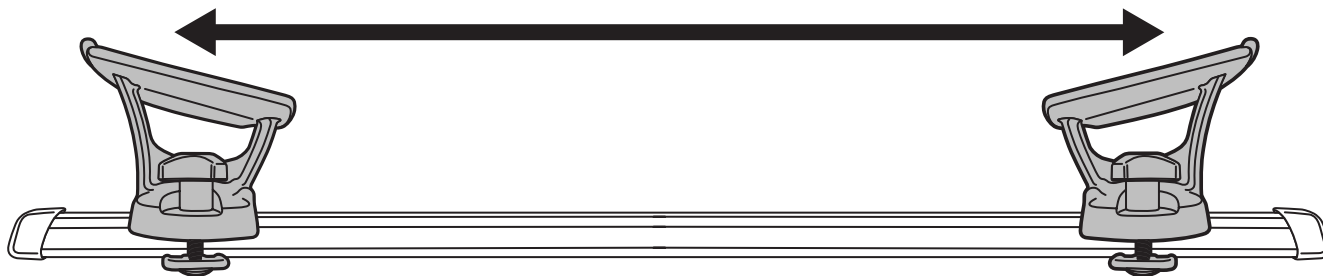


- Loosely attach other carriage bolt and knob as shown.

- Repeat above steps for all 4 saddle assemblies.

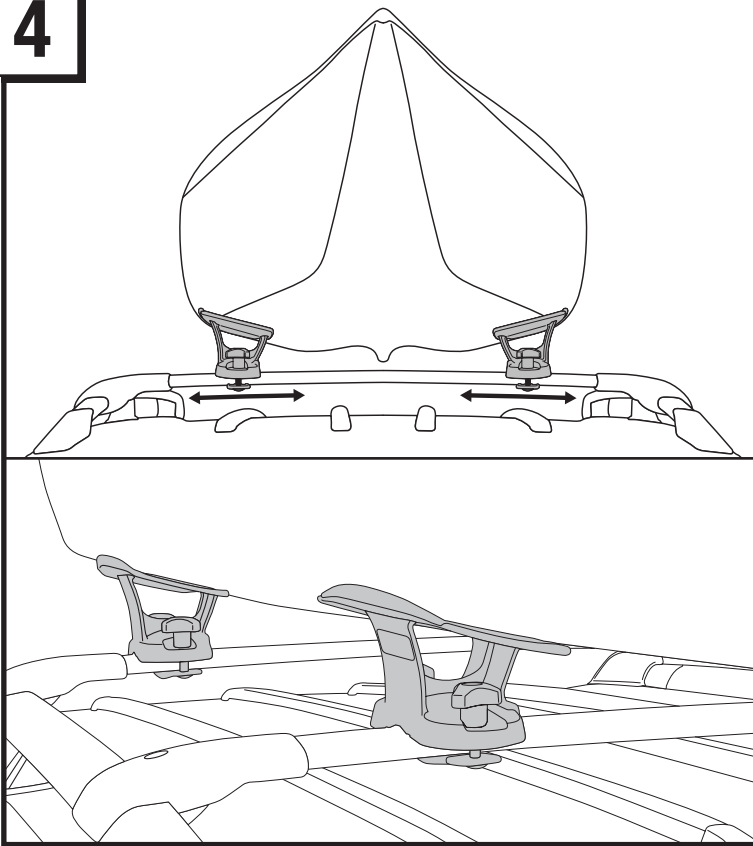
NOTE: Load bars must be at least 24" (610mm) apart for safe use.

3



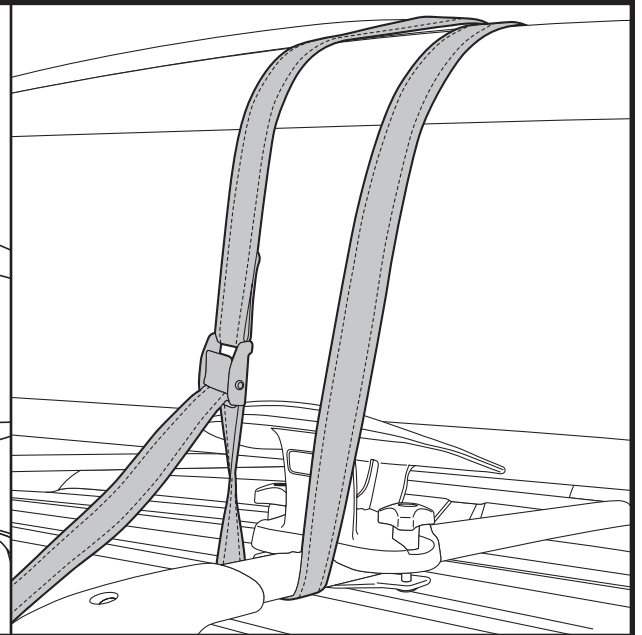
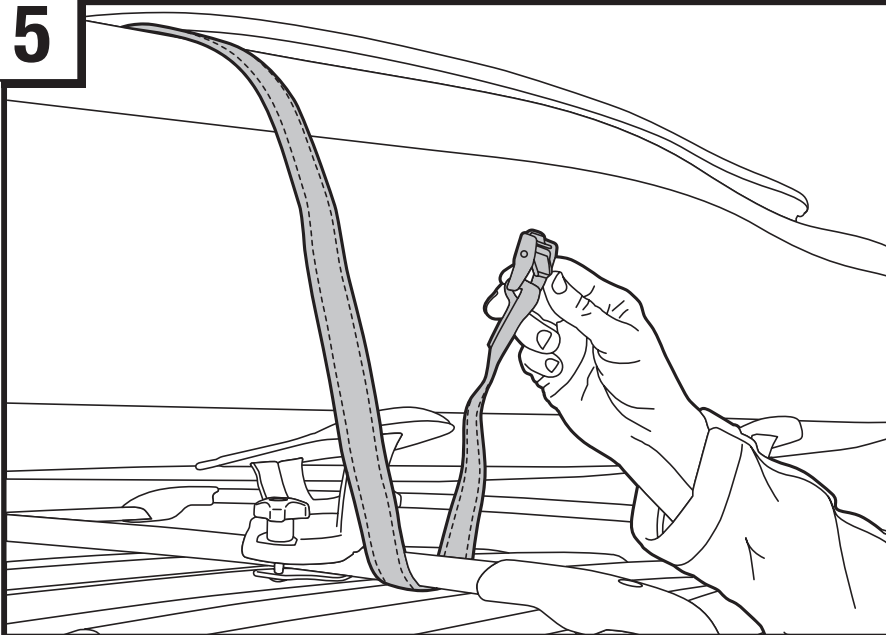
- Position saddles for the approximate width of your boat.

4



- Load boat onto saddles. It may be necessary to readjust the distance between your saddles for a snug fit. Make sure boat is in line with vehicle.
- Ensure that there is clearance between load bars & hull.
- Position saddles so top edge contacts side of boat.
- Securely tighten knobs. Ensure space between bracket and saddle is equal on both sides of each assembly as you tighten the knobs.

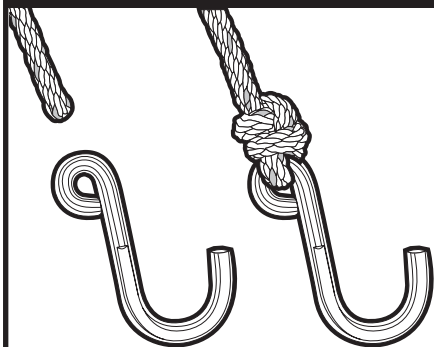
5



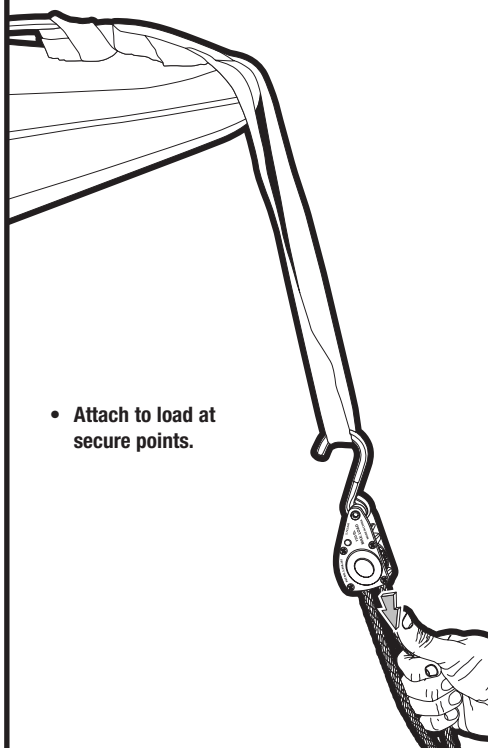
- Always route straps under the bar as shown.

NOTE: Never route straps through saddle.

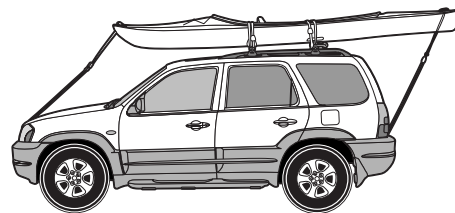
- Ensure straps do not go over cockpit cowlings or other non-load bearing boat details before cinching straps.

6**BOW / STERN TIE DOWN**

- Carefully and securely attach hook to end of rope.

7

- Attach to load at secure points.

8

- Secure end of rope to front and rear of vehicle and tie tightly.

NOTE: For easier tie down to vehicle, the QuickDraw ratcheting tie down is available at your local Thule dealer .