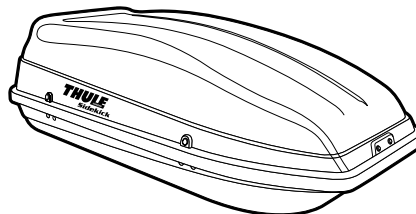


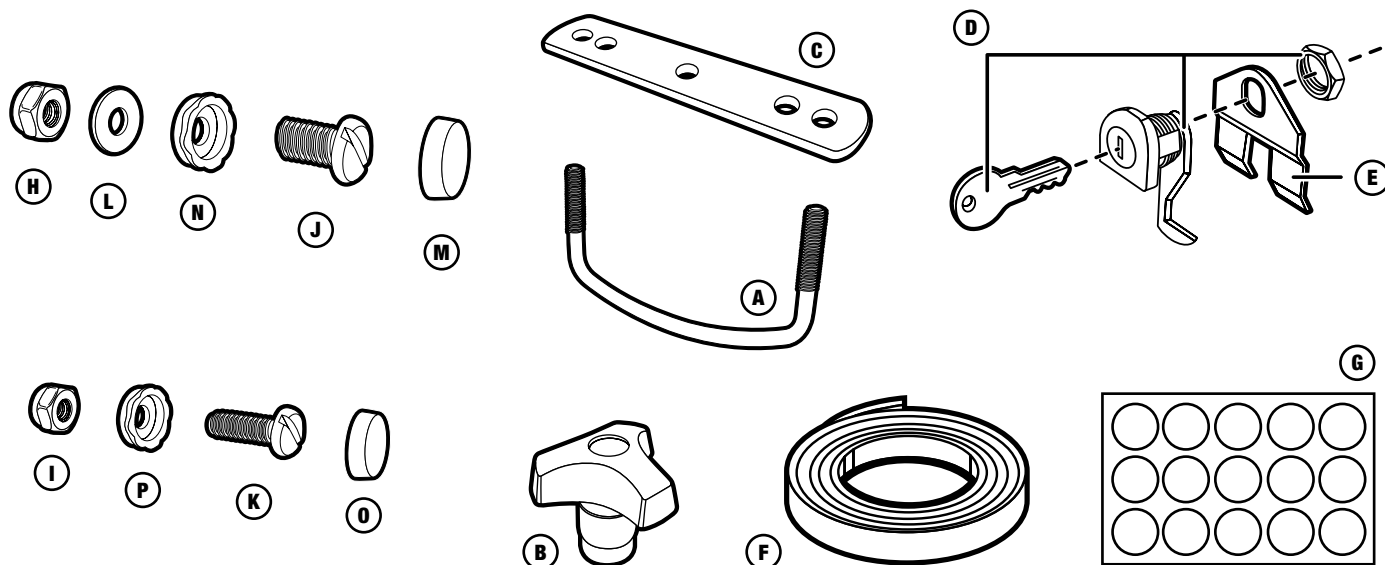
THULE

SWEDEN

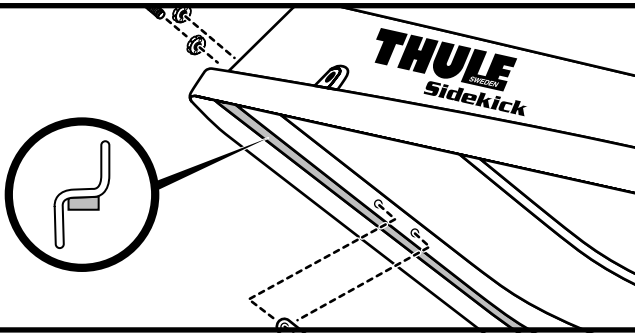
Sidekick



PARTS INCLUDED



part	description	part number	qty.
-	Hardshell Top	_____	1
-	Hardshell Bottom	_____	1
	MASTER PARTS BAG CONTENTS /	04958	1
A	U-Bolts /	_____	4
B	Knobs /	_____	8
C	U-Bolts Brackets /	_____	4
D	Camlock with Keys /	03807	2
E	Lock Locator /	03808	2
F	Foam Gasket /	01315	1
G	Vinyl Hole Covers /	10171	1
	SMALL PARTS BAG CONTENTS /	04959	1
H	Large Nut /	_____	2
I	Small Nut /	_____	4
J	Large Screw /	_____	2
K	Small Screw /	_____	4
L	Large Washer /	_____	2
M	Large Cap /	_____	2
N	Large Cap Retainer /	_____	2
O	Small Cap /	_____	4
P	Small Cap Retainer /	_____	4

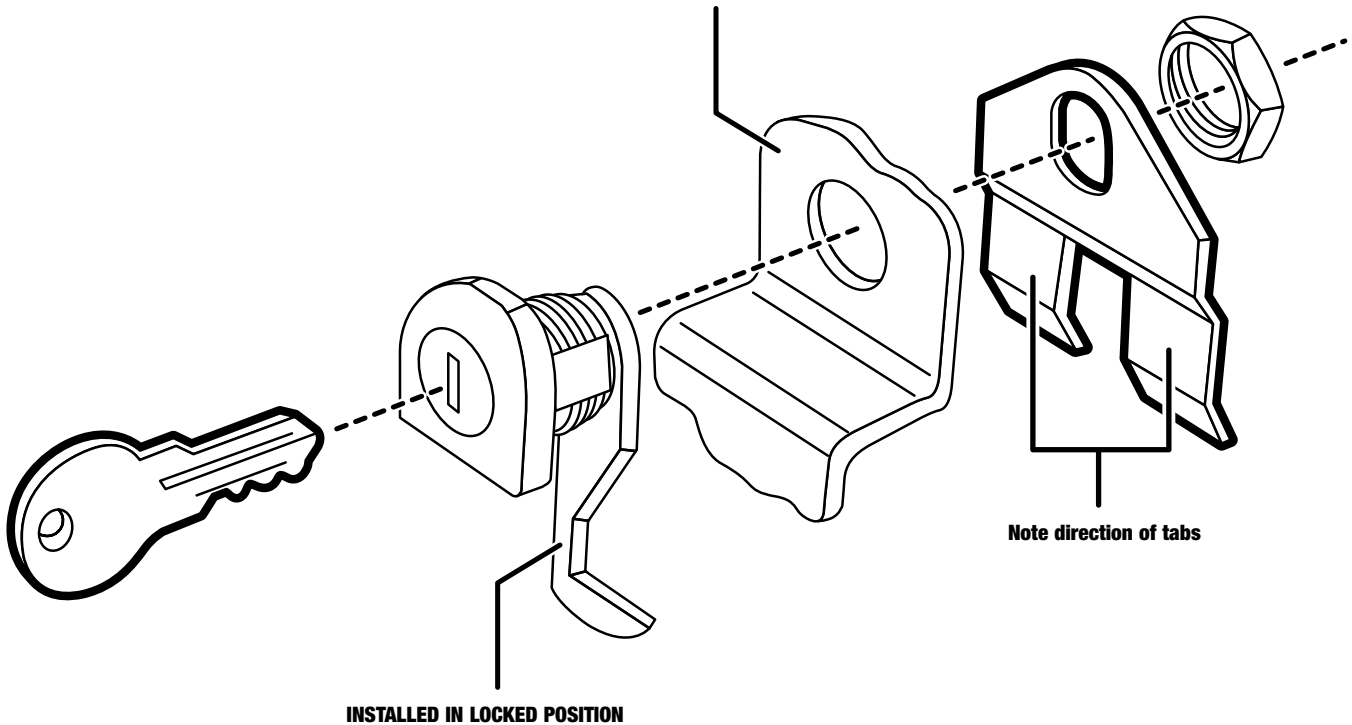
1

- Attach foam weather stripping (F) to inside flange of Carrier top.

NOTE: Do not cut! Roll out in one piece and trim excess.

2

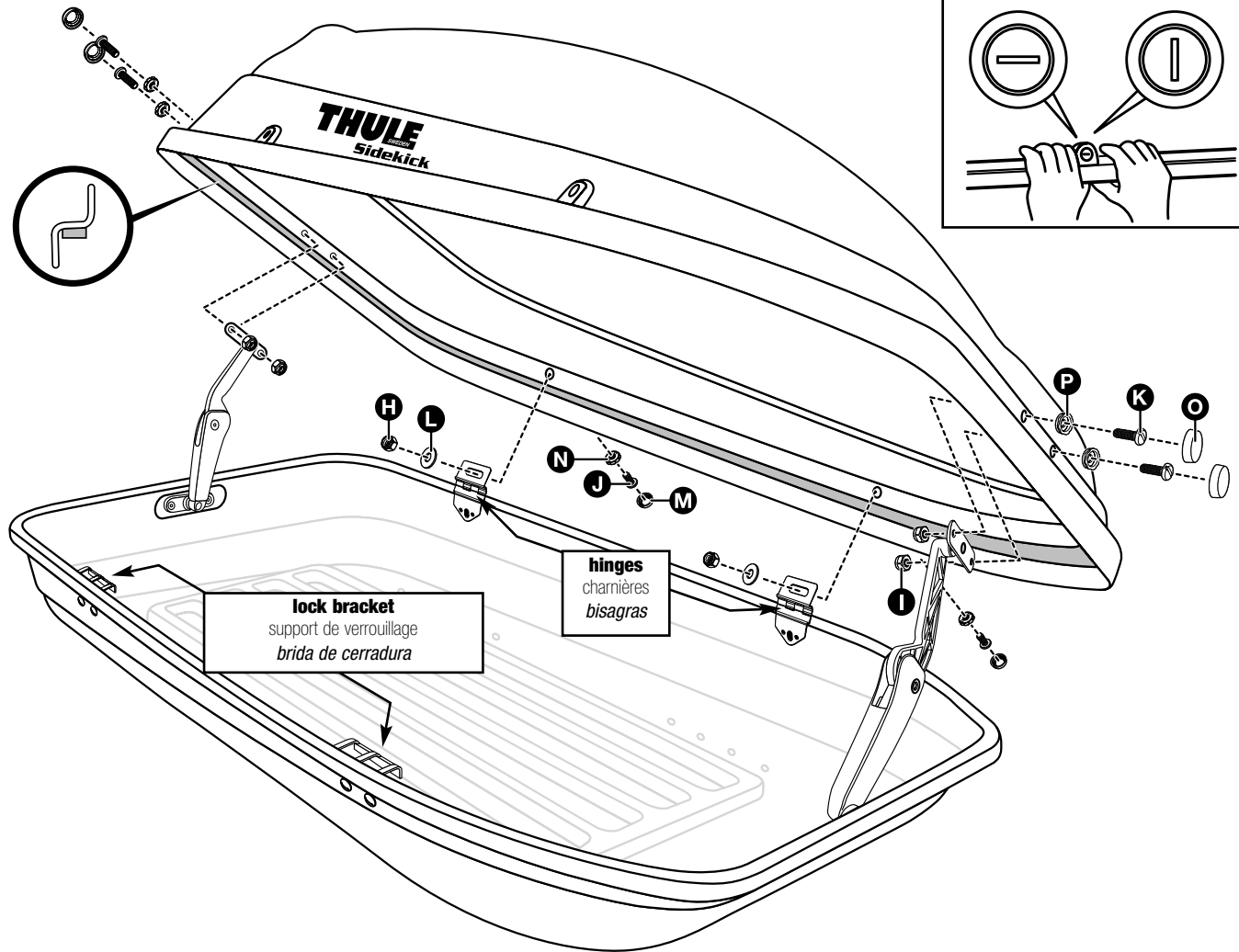
CUTAWAY OF HARDSHELL TOP



- Install lock assemblies (D) as shown.

- Tighten nut with wrench.

NOTE: The lock needs to be in the “locked” position for assembly to the Carrier top and for assembly of the lock locator. Remove key to prevent movement of lock hook .



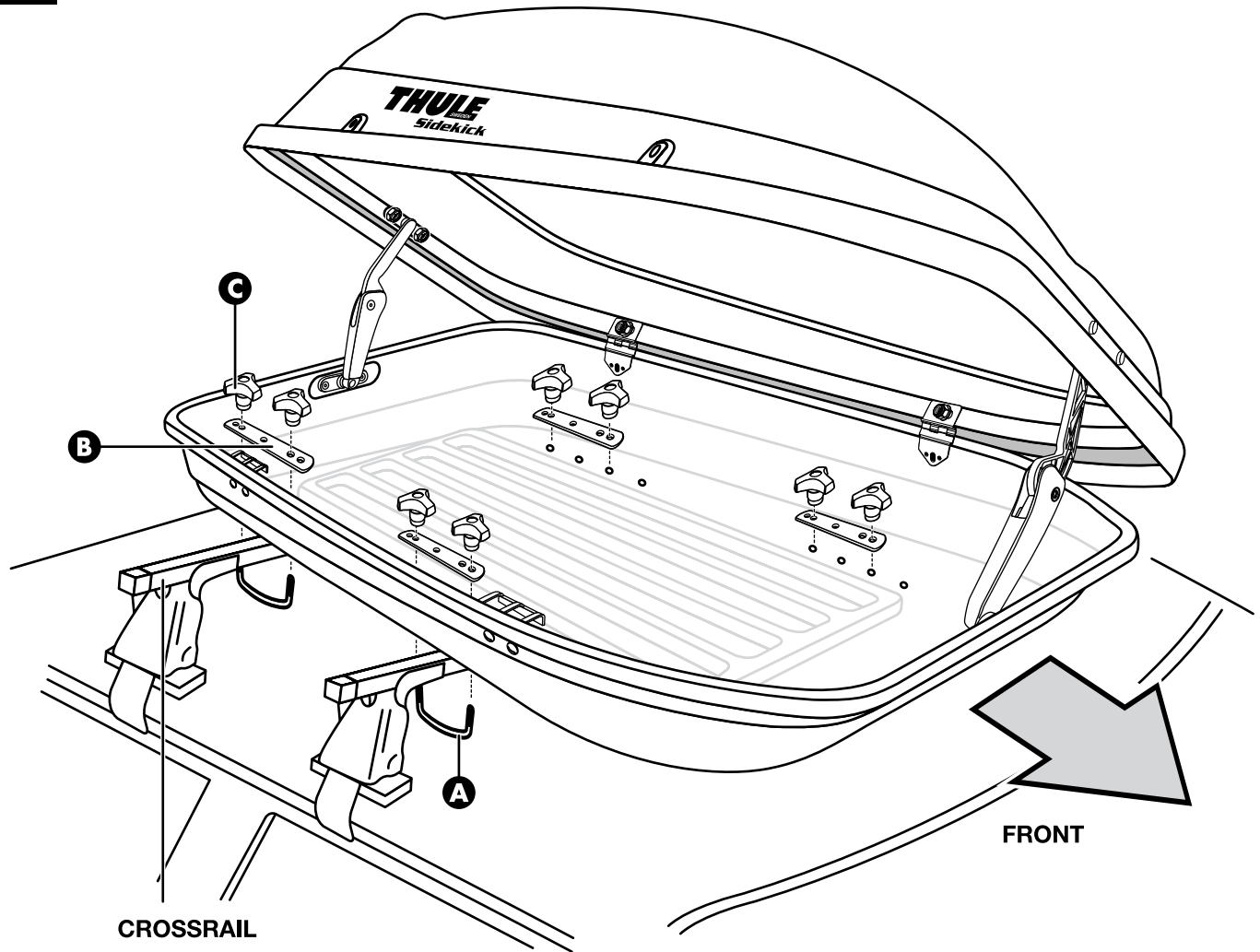
ASSEMBLING TOP TO BOTTOM

- While someone holds the top, align the slot in the front hinge (attached to Carrier bottom) with the corresponding hole in the Carrier top. Attach the front hinge as illustrated in figure 3 above. Place the large screw (J) through large cap retainer (N), then through hole in Carrier top and through hinge slot. Place large washer (L) over the screw thread (J) and thread on the large nut (H). Tighten nut loosely for now. **[DO NOT SNAP LARGE CAP (M) ON AT THIS TIME.]**

Repeat procedure for rear hinge.

- Attach the lid supports at the front and rear of the Carrier bottom to the Carrier top as illustrated in figure 3 above. Place small screw (K) through small cap retainer (P), then through hole in Carrier top and through lid support attachment plate. Thread on small nut (I). Tighten nut loosely for now. **[DO NOT SNAP SMALL CAP (O) ON AT THIS TIME.]** Repeat for second hole and again for remaining two holes at opposite end of box. Tighten all small screws – **[DO NOT OVER TIGHTEN.]** Snap on small caps (O) at all four locations.
- Check for correct alignment of lock assembly by closing and locking the carrier. If the lock does not align with the lock bracket and does not lock properly, adjust the position of the Carrier top with hinge, until they lock. Tighten large screws and snap on large caps.
- To close Carrier, make sure the locks are in the open (horizontal) position with the key removed and pull Carrier top downward from both ends.
- To lock Carrier, insert key, pull down on flange of carrier top and turn key to the locked position (vertical). **FOR SAFETY, BOTH CAMLOCKS (D) MUST PROPERLY ENGAGE THE BOTTOM LOCK BRACKETS.**

CAUTION: Check that latches are engaging brackets. Top should not lift up when pulled. All locking devices must be engaged (and keys removed) whenever the vehicle is in motion.

4

1. When Carrier is assembled, place on the crossrails with opening side toward passenger doors. Place U-Bolts under crossrails and assemble U-bolts (A) through Carrier bottom mounting holes and U-bolt brackets (C). Secure with threaded knobs (B). Recheck to see that your crossrails are securely locked into position. For safety the hooks in the carrier locks must properly engage the lock brackets whenever the vehicle is in motion.
2. Periodically check all mounting hardware for tightness.
3. To help prevent water from entering your Carrier vinyl covers are included for any unused mounting holes.

5**MAINTENANCE**

- The roof box should be carefully cleaned and maintained, particularly in the winter months.
- For cleaning, use only water with a mild detergent which contains no additives (such as alcohol, chlorine or ammonia) as these could damage the surface of the roof box.
- The locks should be lubricated with graphite or similar dry lubricant.
- Box should be protected from exposure to the elements during prolonged periods of storage.
- Box and fittings should be inspected periodically for damage.
- To avoid distortion when storing, close and latch. Do not place items on top of carrier.