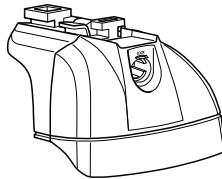


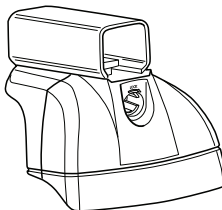
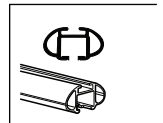
Kit 3114

COMPATIBILITY AND RESTRICTIONS

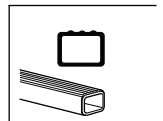
- *Installation requires drilling the roof and permanently installing parts.*
- *Tools and some mechanical skills are required. If concerned about installation, have installed by professional installer.*
- *Not for off road use.*
- *Do not install if roof has had bodywork.*
- *Do not install on vehicles with sunroofs.*
- *Do not install on vehicles with side curtain airbags.*
- *Do not install on vehicles with factory racks.*



460R



460



xx kg
xx lbs + 5 kg
11 lbs =

Max.
75 kg
Max.
165 lbs

80 km/h
50 Mph 130 km/h
80 Mph 40 km/h
25 Mph

km/h
Mph

instructions
Kit XXXX

not included

9/16"

x1 x1
0.302" 1/8"

x1 x1
4 mm T25

x1 x1
silicone x1

x1 x8
x1 x4
x1 x8
x1 x8

x1 x4

23 mm

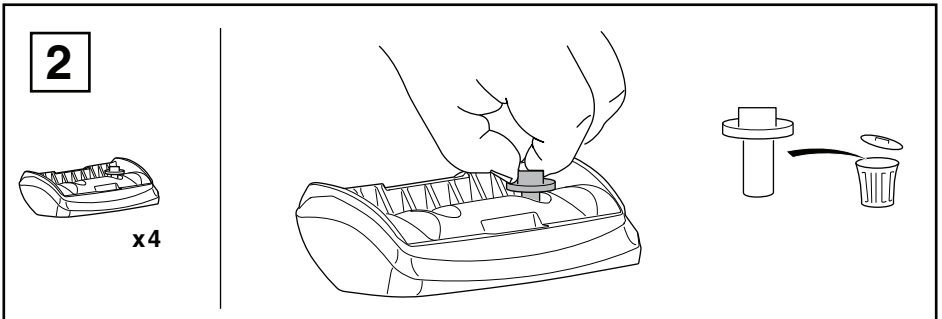
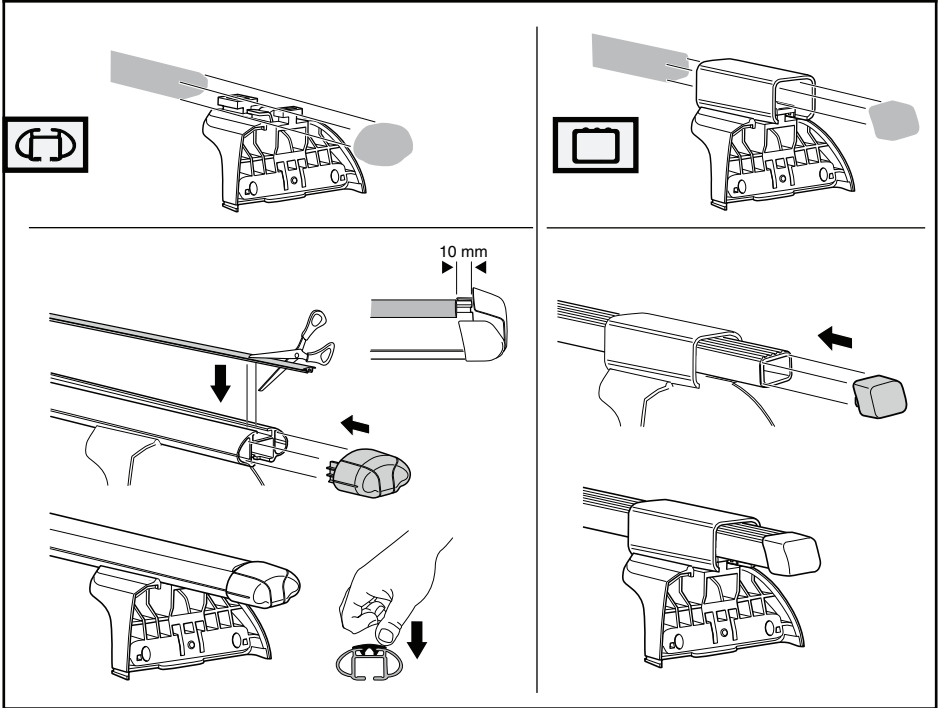
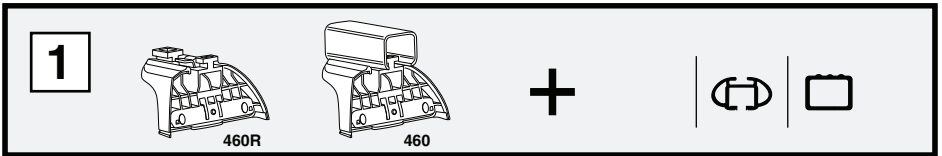
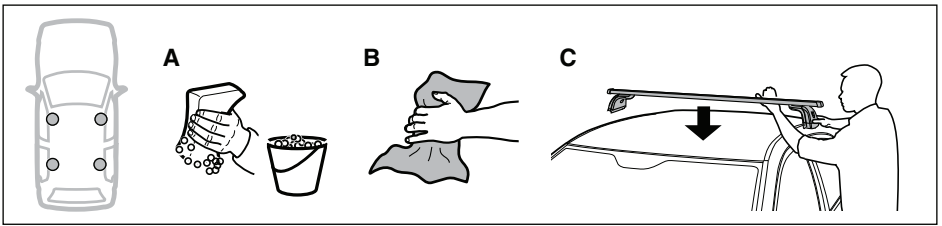
x2 x2
x2 x2

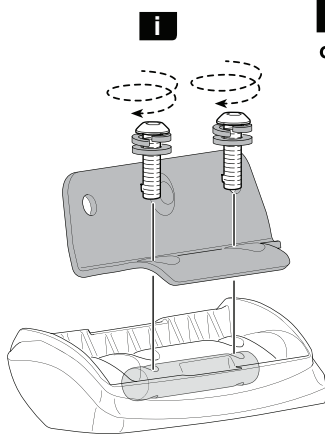
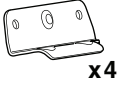
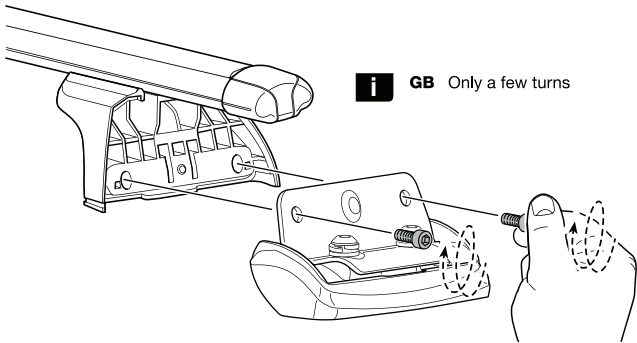
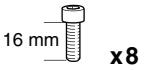
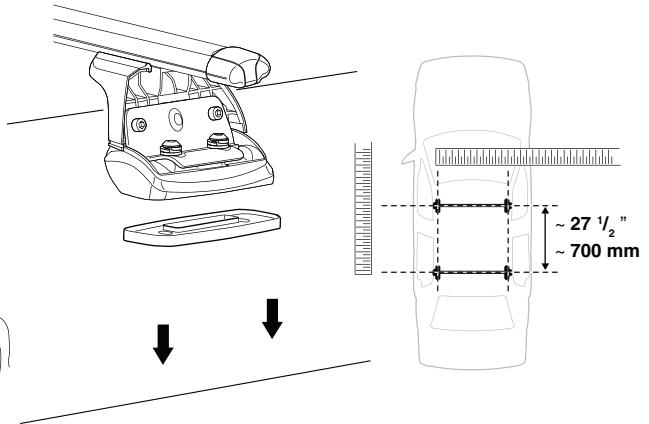
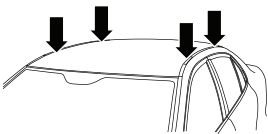
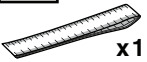
460R

x4 x4
x4 x4
x4 x8 x1 x4
16 mm 5 mm

460

x4 x4
x4 x8 x1 x4
16 mm 5 mm



3**i****GB** Only a few turns**4****i****GB** Only a few turns**5**



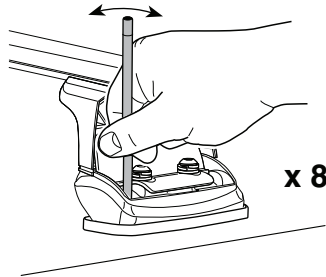
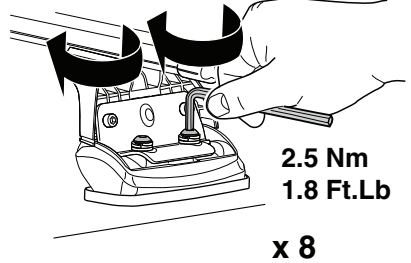
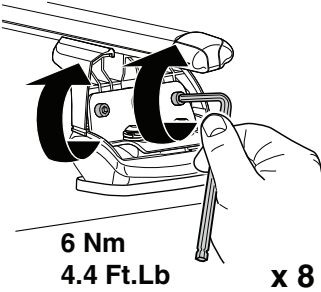
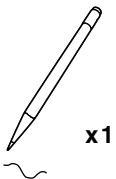
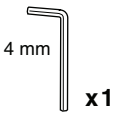
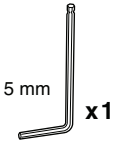
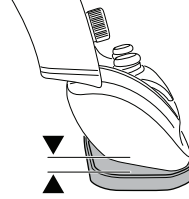
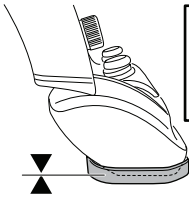
GB

NOTE:

Continuing with installation requires drilling. If you are unfamiliar with installation or have any doubt, seek a professional installer.



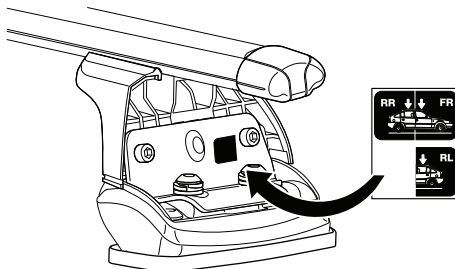
6

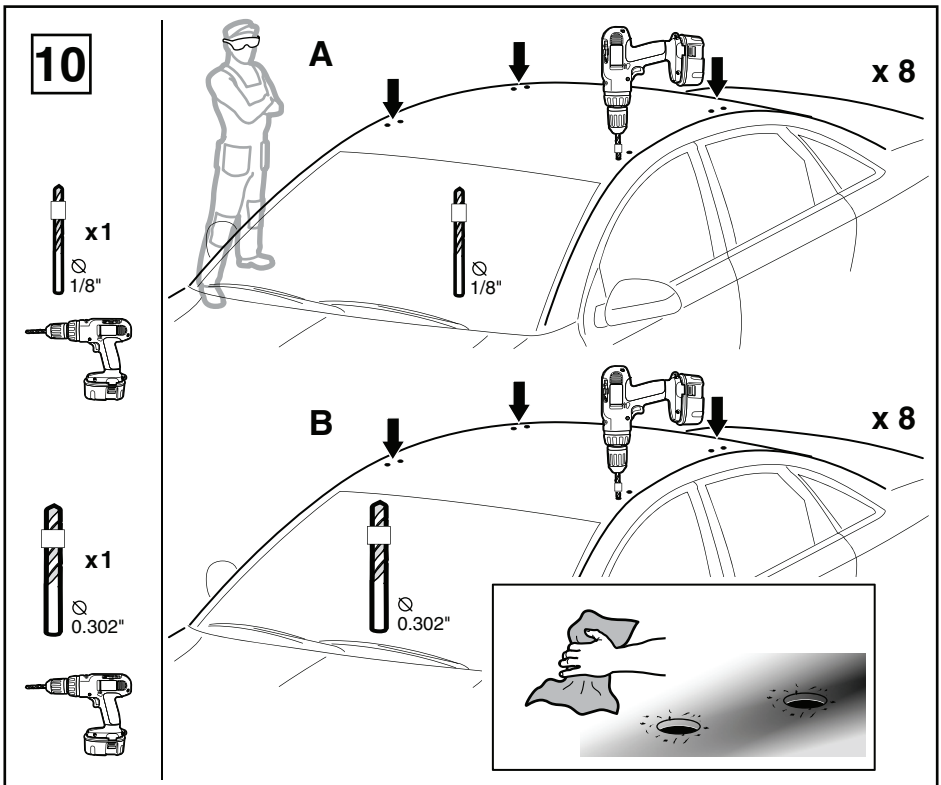
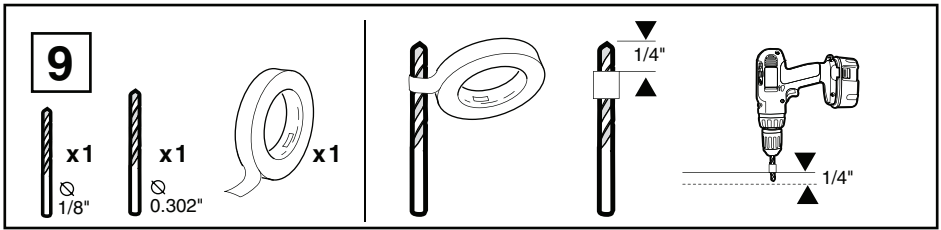
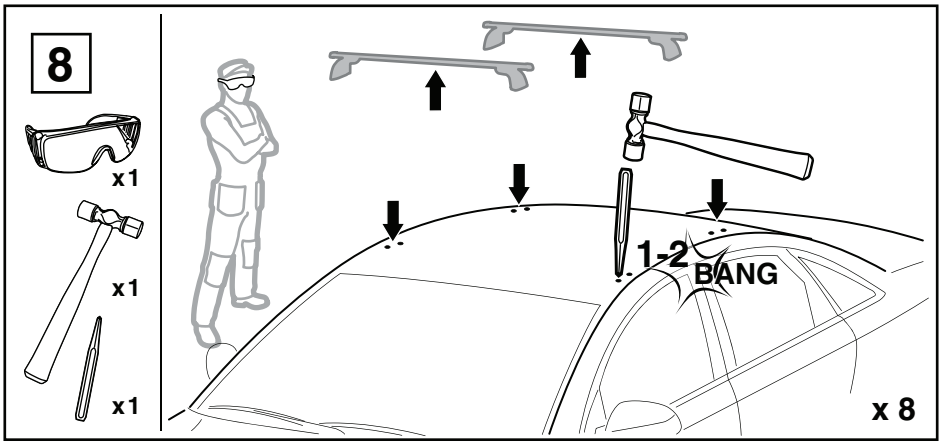


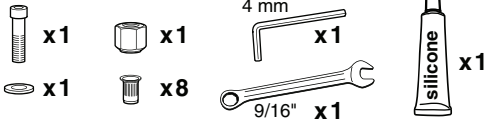
7



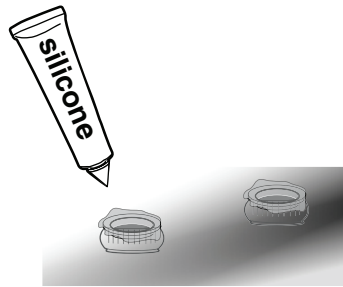
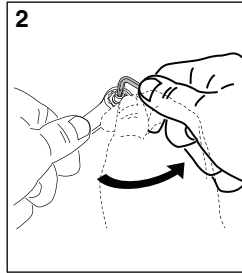
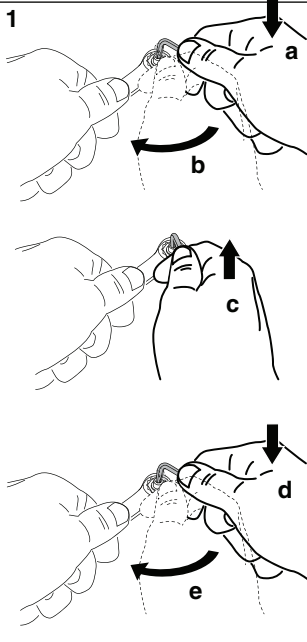
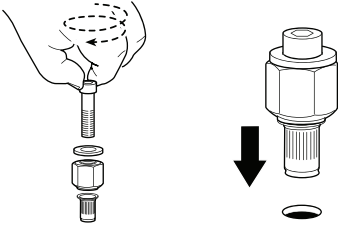
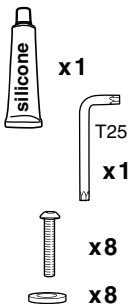
x1





11

1. While firmly holding nut with 9/16" wrench, tighten screw. Tighten until there is a noticeable increase in the force.
2. Remove flaring tool by holding nut with 9/16" wrench and turning screw counter clockwise.

**12**

2.5 Nm
1.8 Ft.Lb

