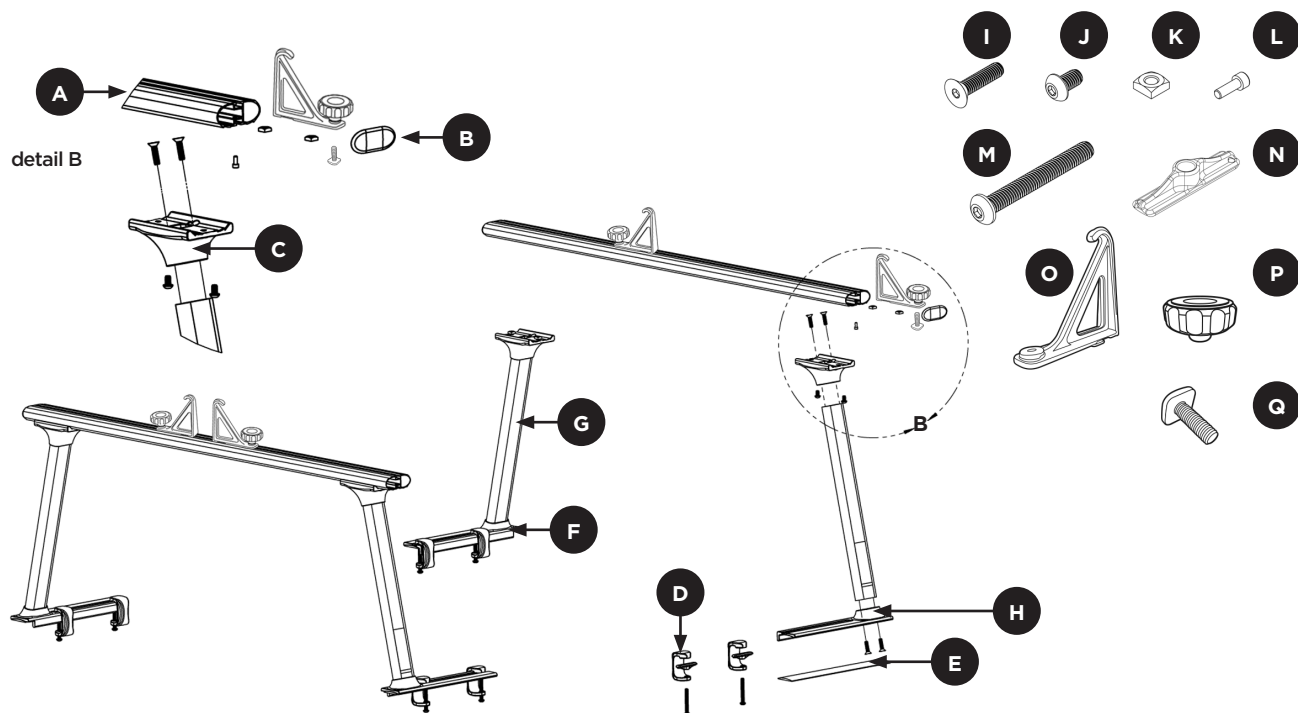
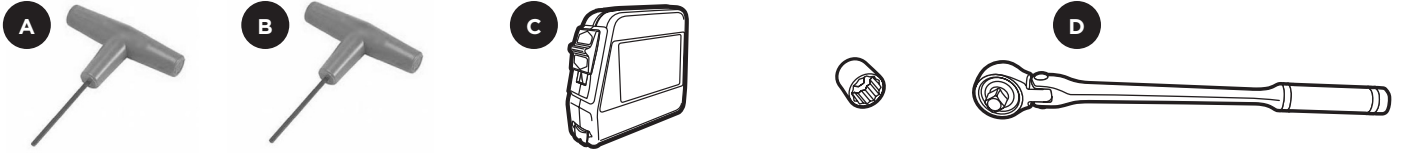


PARTS INCLUDED •



part	description	qty.
A	double t slot crossbar	2
B	double/triple crossbar endcap	4
C	modular saddle	4
D	modular clamp	8
E	shim, rounded	4
F	upright base right rear\left front	2
G	modular upright	4
H	upright base left rear\right front	2
N	clamp foot	8
O	crossbar tiedown	4
P	tiedown knob	4
	Hardware Bag	1
I	3/8" - 16 x 1.5" flat head cap screw	16
J	3/8" - 16 x .625" button head cap screw	8
K	3/8" - 16 square nut	8
L	M6-1 socket head cap screw	4
M	3/8"-16 x 3.0" button head cap screw	8
Q	t-bolt M8 x 26 mm	4

TOOLS THAT YOU WILL NEED



part	description
A	7/32" allen key*
B	3/16" allen key*
C	tape measure
D	recommended: torque wrench

TOOLS THAT WILL MAKE IT EASY



part	description
A	7/32" & 3/16" hex bit socket
B	1/4" socket adaptor
C	electric drill/socket wrench

WARNINGS / LIMITATIONS

- This system has been designed with a maximum load capacity of 800lbs. Do not exceed vehicle manufacturer's load limits.
- If used in conjunction with another type of load carrying system the lower weight capacity of the two systems should be followed.
- Tie down front and rear of all long loads to the vehicles bumpers for safe transport.
- Excessive rust in bed decreases carrying capacity and could result in system failure.
- Vehicles with bed liners could require modifications. Read through the instructions prior to beginning installation.
- Install parts as shown on illustrations.
- Carrying high loads over rough roads with excess speed may damage the system. Good judgment must be exercised at all times.

1

UPRIGHT ASSEMBLY

NOTE: Initial assembly is recommended off truck to ease final install.

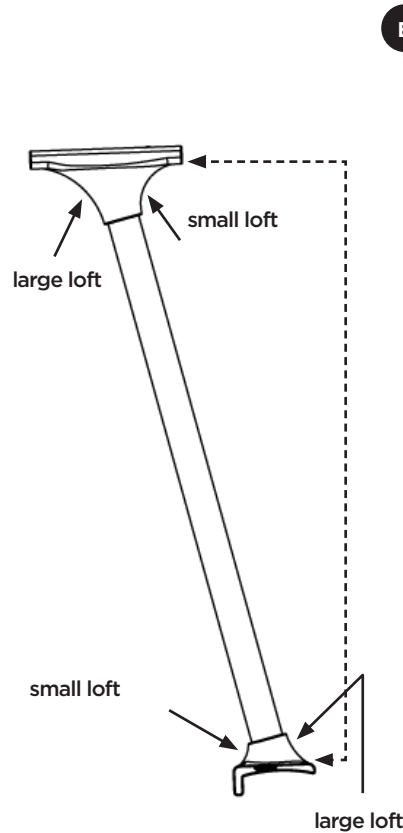
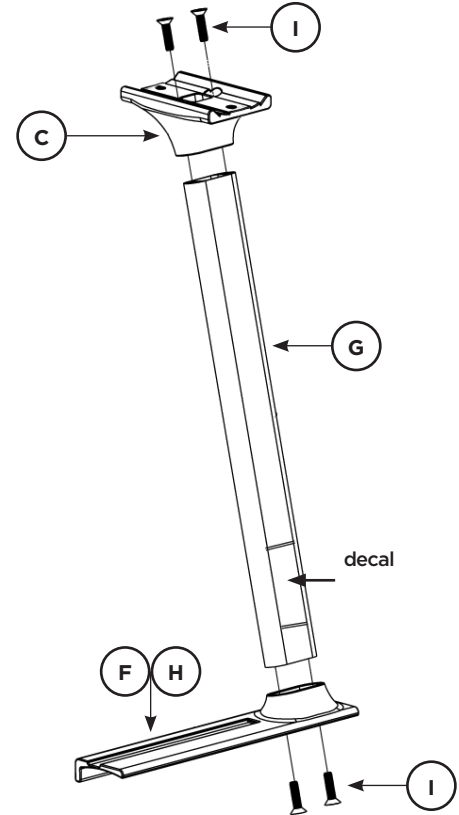
NOTA: Se recomienda llevar a cabo el montaje inicial abajo de la camioneta para facilitar la instalación final.

1. Insert top (opposite the decal) of the upright (G) into Saddle. Make sure smaller loft is facing side with decal. (see image).
2. Bolt saddle through top by using two 3/8"-16 FHCS (I) and tighten using a 7/32" Allen Key. Torque to 32 ft.lb.

NOTE: Thread both flat head cap screws by hand first to avoid cross threading bolt. When tightening 3/8" FHCS (I) ensure the Allen Key is fully seated in bolt.

3. Bolt upright (G) and saddle (C) to base (F or H). When bolting base to upright ensure decal is facing larger loft of base (opposite L-shape lip of base).

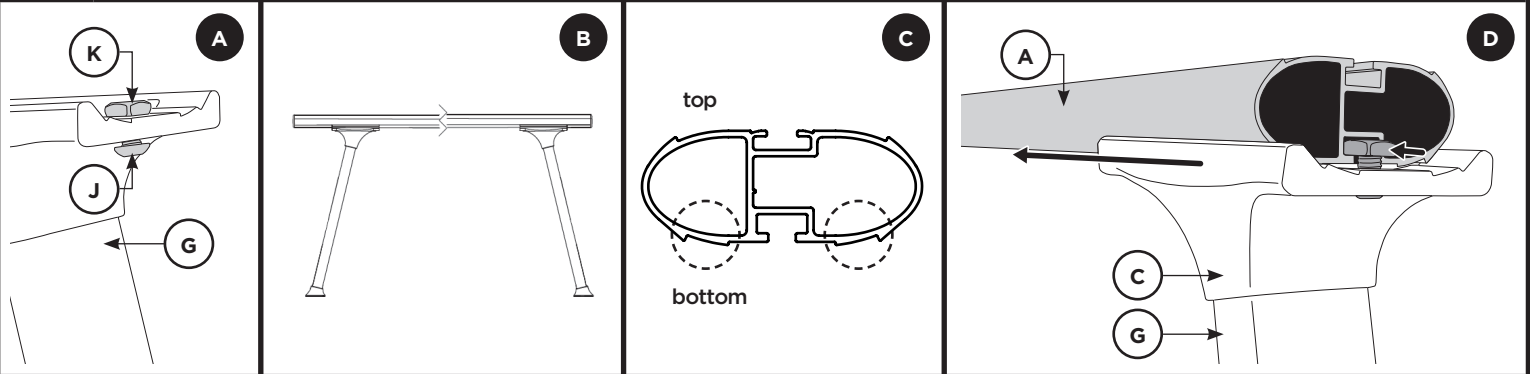
4. Repeat 1-4 for the remaining uprights (G).



NOTE: Both surfaces must be parallel with each other.

2

CROSSBAR ASSEMBLY



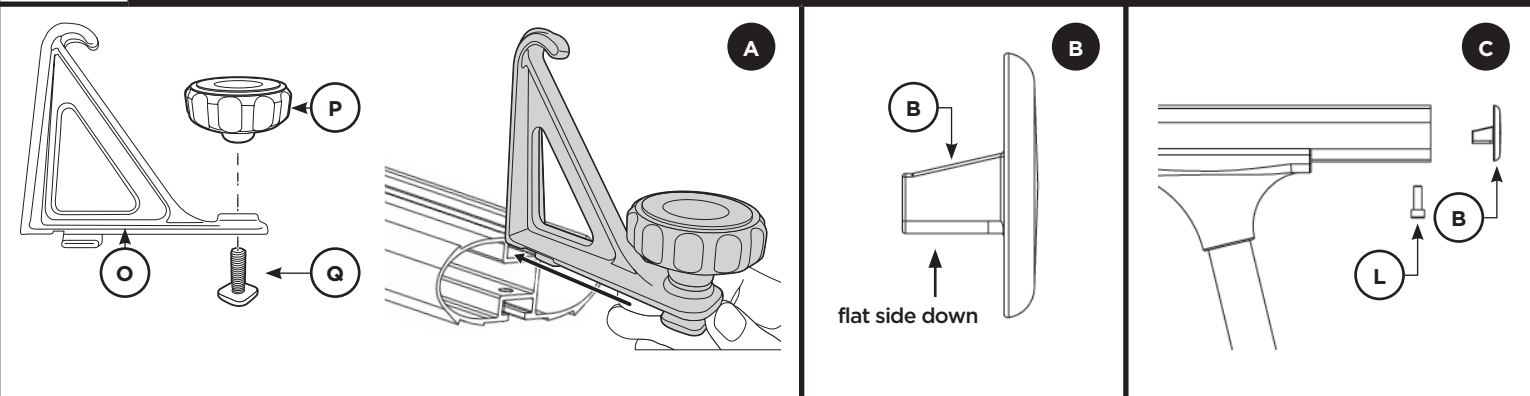
1. Locate 3/8"-16 x .625" button head cap screws (BHCS) (J), square nuts (K) and Uprights (G), pre-thread with 3/4 turn. (see Image A).

NOTE: To confirm correct assembly, and when standing left to right, racks should angle towards each other with bases facing the same direction (see Image B).

2. Orient first Crossbar (A) with bottom slot facing down (Image C), and slide Saddle (C) with BHCS/square nut assembly (J,K) into bottom slot of Crossbar (A) (Image D). Leave bolts loose until final truck install. Repeat on opposite side and for remaining Uprights.

3

TIEDOWNS AND ENDCAPS ASSEMBLY A



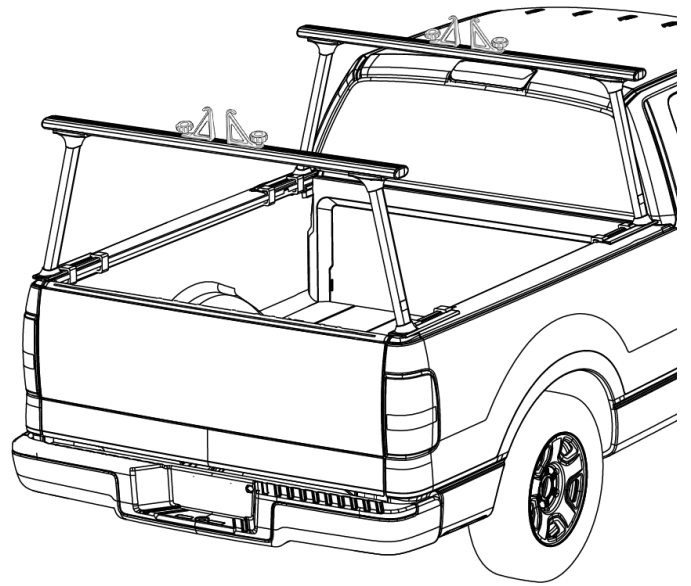
1. Pre-assemble all load stops as shown. Attach knob (P) loosely.
2. Slide tiedown into top crossbar track, locate in desired position, and twist knob until securely in place.

Locate crossbar end caps (B) and with flat side facing ground (see Image B) insert into crossbar. Secure with M6-1 socket head cap screw (SHCS) (L), and tighten with 3/16" allen key.

4

INSTALLING THE RACKS

1. Place rounded shims (E) on sidewalls of truck approximately where uprights will sit.
2. Place front uprights on top of rounded shims (E) ensuring rubber shims are aligned under bases.
Place the rear uprights on top of rounded shims (E) ensuring are aligned under bases.
3. Adjust uprights outwards toward inner lip of truck bed so base (F and H) L-rail is as close to truck bed as possible.

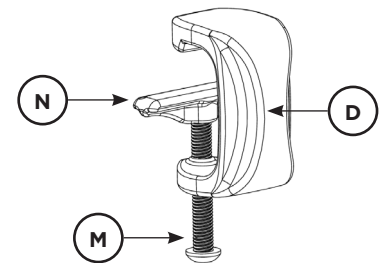


NOTE: Due to taper in many trucks beds, base L-rail may not sit against side of the truck bed. This gap is normal and will not affect rack performance.

5

CLAMP ASSEMBLY

1. Thread 3/8" - 16 BHCS (M) through bottom of front clamp (D) (see Image A).
2. Place clamp foot (N) on top of 3/8" BHCS as shown.
3. Repeat steps 1-2 for the remaining clamps.



NOTE: Clamp feet (N) must be used to ensure proper tension between rack and truck bed to prevent damage.

NOTE: Application of Loc-Tite (red) is recommended for any thread that is engaged with the clamps. BHCS (M) should be re-torqued every 5,000 miles.

1. Position front base notch to front of cab so base is on bulkhead.
2. Hook two clamp assemblies onto either side of truck bed rail and slide into groove in base. Place front clamp as close to upright as possible and rear clamp as far back on base as possible. (see Image B).

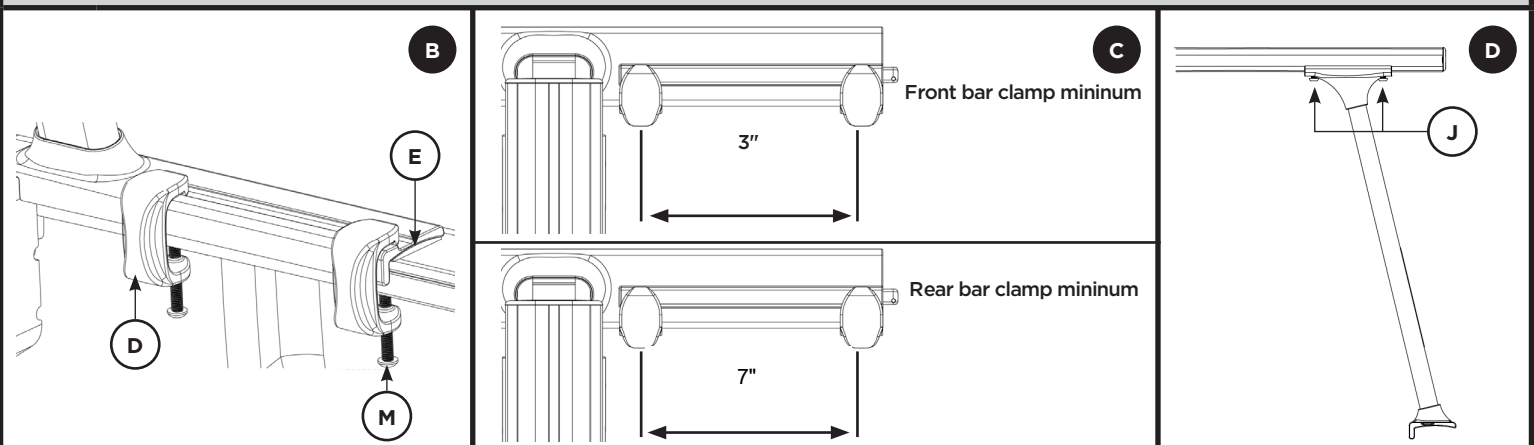
NOTE: FRONT CLAMPS: Position clamps at least 3 inches apart. Any less will reduce rack load capacity. Adjust position of racks along truck bed rail if bed wall design does not allow for proper clamp position. (see Image C).

3. Tighten clamps to 10 ft.lb. Start with clamps closest to upright on both sides of truck following with clamps towards rear of truck.
4. Repeat steps 1-4 on rear rack. Rear uprights should sit as close to tailgate as possible without base extending past end of bed rails. However to maximize distance between clamps, uprights may need to move.

NOTE: REAR CLAMPS: Position clamps at least 7 inches apart. Any less will reduce rack load capacity. Adjust position of racks along truck bed rail if bed wall design does not allow for proper clamp position.

5. With uprights secured center crossbar using measuring tape. Once centered use 7/32" allen driver to secure crossbars. Torque Button head bolts (J) to 27 ft.lb

NOTE: Keep rubber shim (E) under base when tightening clamps.



THULE RACK GUIDELINES

When using Thule Load carriers and accessories, the user must understand the precautions. The points listed below will assist you in using the rack system and will encourage safety.

- For quality fits and safety, use only the recommended rack or accessory as stated in Thule's current Fit Guide. Do not assume a rack will fit, always check the current Fit Guide when obtaining a new vehicle.
- The maximum load specified in the assembly instructions is not to be exceeded. However, this limit is always subordinate to the maximum load recommended by the manufacturer of the car itself. It is always the lower maximum recommended load that applies. **Max roof load = load carrier weight + any fitted carrier accessories + the weight of the load itself.**
- Always make sure all doors are open when mounting a roof rack system. Make sure all knobs, bolts, screws, straps, and locks are firmly attached, tightened and locked before every trip. Knobs, bolts, screws, straps and locks must be periodically inspected for signs of wear, corrosion, and fatigue. Check your load at stops during the trip to ensure continued fastening security.
- Check local and state laws governing projection of objects beyond the perimeter of a vehicle. Be aware of the width and height of your cargo since low clearance branches, bridges, and parking garages can affect the load. All cargo will affect the vehicle's driving behavior. Never drive with any lock, knob or rack in an open or unlocked position. All long loads such as, but not limited to, sailboards, surfboards, kayaks, canoes, and lumber must be tied down front and rear to the bumpers or tow hooks of the vehicle.
- Remove your Thule rack and accessories when they are not in use and before entering automatic car washes.
- All locks must be turned and moved periodically to ensure smooth operation. Use graphite or dry lubricant to help this. Thule locks are designed to deter vandalism and theft but should not be considered theft proof. Remove valuable gear if your vehicle is unattended for an extended period. Place at least one key in the glove compartment.
- For safety to your vehicle and rack system, obey all posted speed limits and traffic cautions. Adapt your speed to the conditions of the road and the load being carried.
- Do not use Thule load carriers and accessories for purposes other than those for which they were designed. Do not exceed their carrying capacity. Failure to follow these guidelines or the product's instructions will void the warranty.
- All loads must be secured using the provided straps.
- Consult with your Thule dealer if you have any questions regarding the operations and limits of Thule products. Review all instructions and warranty information carefully.
- Not for use on trailers or towed vehicles.
- Not for offroad use.
- Keep bicycle tires away from hot exhaust.