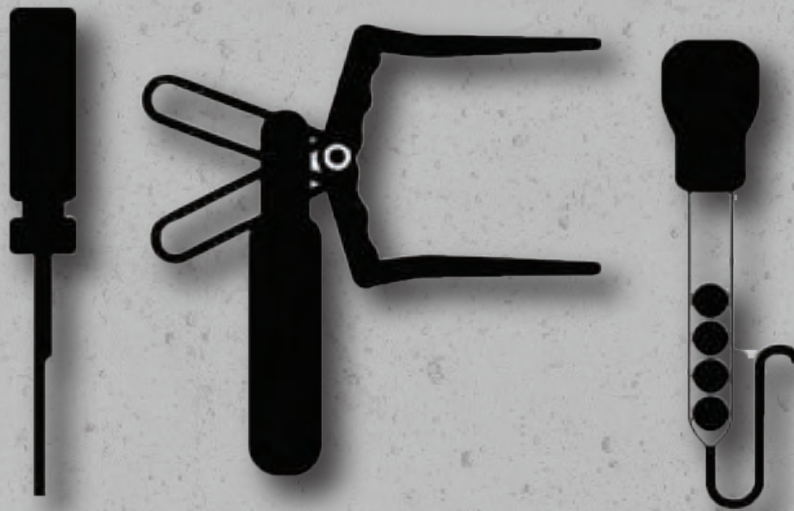


# THEXTON

SPECIALTY TOOLS, TESTERS & DIAGNOSTIC  
EQUIPMENT SINCE 1907



# TOOL INDEX BY CATEGORY

## TESTERS

106 Disc-Type (EG) Anti-Freeze Tester  
107 Disc-Type (PG) Anti-Freeze Tester  
108 Professional DEF-Tester  
100 Propylene Glycol Tester  
101 Ethylene Glycol Tester  
102 Ethylene Glycol Tester  
109 Pocket Size DEF Tester  
105 Professional Refractometer  
115 Batter Tester  
117 Disc-Type Battery Tester

## ELECTRICAL & BATTERY

404 Ignition Spark Tester  
458 Coil-on Spark Tester .  
862 Ext. Small Engine Spark Tester  
863 2' Spark Tester Extension  
923 Adj Small Engine Spark Tester  
  
914 Back Probe Spoons  
490 Back Probe Kit  
490X Extended Back Probe Kit  
490-90 Heavy Duty Back Probe Pins  
490-M Heavy Duty Back Probe Pins  
604 Battery Filler  
605 Small Battery Fill Adapter  
311 Side Terminal Boost Adapters  
492 Spark Plug Starter Set

## DIAGNOSTIC & FUEL SYSTEM

212A Adapter for 212  
852 Circuit Energizer  
350 GM Carb. Adjustment Tool  
389 Back Pressure Test Kit  
481 Pro Exhaust Back Pressure Kit

## TERM. TOOLS & TEST KITS

483 Deutsch Term. Removal Tool Kit  
582 Deut. Term. Removal Tool 20 ga  
583 Deut. Term. Removal Tool 16 ga  
584 Deut. Term. Removal Tool 14 ga  
588 Pro Deutsch Term. Removal Kit  
493 Terminal Release Tool Kit  
595 Terminal Release Tool Kit  
495 Terminal Release Tool Kit Master  
935 Master Terminal Tool Set  
520 Electrical Testing & Repair Kit  
521 Deut. Connector & Terminal Kit  
508 Deutsch Jumper Wire Kit  
508RPL Deut. Jumper Wire Repair Kit  
513 Delphi Jump Wire Replace Kit  
512 Bosch Jumper Wire Kit  
512RPL Bosch Jumper Wire Repair Kit

## COOLING SYSTEM & PLUGS

356 Heater Core Back Flush Tool  
815 Heater Core Back Flush w/ Air  
467A High Pressure Air/Water Wand  
467E 12in Extension for 467A  
319 Cooler Line Plugs  
312 Plug All Stoppers  
423 Petcock Socket  
473 Radiator Petcock Socket  
485 Petcock Socket Set

## BRAKE TOOLS

803X Universal Master Cyl. Bleeder Kit  
803P Universal Master Cyl Plug Kit  
804 US/Metric Master Cyl. Bleeder Kit  
832 GM "W" Single Spring Brake Tool  
849 Master Cyl. Brake Bleeder & Plug Kit

## LUBE TOOLS

418 Right Angle Grease Adapter  
418-12 Right Angle Grease Adapter  
446 Quick Grease Coupler Adapter  
444 Professional Lube Kit

## SPECIALTY TOOLS

926 Wire Insertion Tool Kit  
927 Relay Bypass Kit  
393 Throttle Pedal Depressor  
383 Power Steering Belt Tool  
430 Hood/Tailgate Prop  
432 Universal Thread Gauges  
482 Small Fastener Removal Kit  
819 Rapid Core Remover  
498 14MM X 1.25 Wheel Stud Pilot  
499 14MM Wheel Stud Pilot Pin  
500 12MM Wheel Stud Pilot Pin  
503 12MM X 1.25 Wheel Stud Pilot Pin  
591 Heavy Duty Pilot Pin  
502 Wheel Stud Pilot Pin Kit  
910 Dodge Promaster Wheel Pilot Pins  
837 VW/Audi Lock Carrier Tool Set

# TESTERS

## DISC-TYPE (EG) ANTI-FREEZE TESTER

Part No. 106

Professional disc-type 16 1/4" tester is accurate at all temperatures. Tests ethylene glycol-based coolant, hot or cold, including Dex-Cool®. Easy to read discs are magnified by convex design of the clear SAN plastic barrel. Celsius and Fahrenheit scales. Special feature is the "6th disc" which shows overprotection and a loss of cooling efficiency. Beyond 70% anti-freeze, cooling & corrosion effectiveness is reduced. One-piece bulb and neoprene dip tube.



## DISC-TYPE (PG) ANTI-FREEZE TESTER

Part No. 107

Professional disc-type 16 1/4" tester is used to test propylene glycol-based antifreeze in automotive radiators. Number of floating discs measures level of protection. Temperature compensating tester is accurate whether coolant is hot or cold. Readings in Celsius and Fahrenheit.



## PROFESSIONAL DEF-TESTER

Part No. 108

The DEF-TESTER is designed to test the urea concentration of Diesel Exhaust Fluid. Professional disc-type 16 1/4" tester is accurate at all temperatures. Easy to read discs are magnified by convex design of the clear SAN plastic barrel. One-piece bulb and neoprene dip tube.



# TESTERS



## PROPYLENE GLYCOL (PG) ANTI-FREEZE TESTER

Part No. 100

For testing propylene glycol-based antifreeze in automotive radiators. Accurate to  $-50^{\circ}$  F.\* Ball Float to show freeze protection. Tests coolant hot or cold. Pocket protector.

\*see website for explanation of burst protection vs freeze protection



## ETHYLENE GLYCOL (EG) ANTI-FREEZE TESTER

Part No. 101

Original ball-type, specific gravity tester. Accurate to  $-34^{\circ}$  F., indicating 50/50 mix. Also used to test Dex-Cool®. Special "6th ball" shows overprotection. Extra-long neoprene dip tube. Vinyl pocket protector.



## ETHYLENE GLYCOL (EG) ANTI-FREEZE TESTER

Part No. 102

Popular tester is same as No. 101, but with a rugged safety shield of ABS plastic. Also used to test Dex-Cool®. Vinyl case imprinted with protection scale.

# TESTERS



## POCKET SIZE DEF TESTER

Part No. 109

The DEF-TESTER is designed to test the urea concentration of Diesel Exhaust Fluid. Extra-long neoprene dip tube.



## BATTERY TESTER

Part No. 115

Foolproof, dependable tester accurately tests state of charge within temperature extremes of -40° to 130° F. Uses less than 1/4 oz. of acid. Easy to use. Easy to read.



## DISC-TYPE BATTERY TESTER

Part No. 117

Professional disc-type 16-1/4" tester is accurate down to -40° F. Full size tester uses specific gravity and the number of floating discs to show state of charge. Accurate at all temperatures. Specific gravity levels are printed on the tough, see-through plastic body. Has one-piece rubber bulb, neoprene tip.

# ELECTRICAL & BATTERY

## IGNITION SPARK TESTER

Part No. 404

Works on ignition systems from high energy electronic automotive systems to small engines. Tests for no start conditions and for spark strength. Adjustable gap allows for spark gap requirements from 0 to 40,000 volts. Gauge background makes spark easy to see for accurate measurement. Alligator clip securely fastens to ground. Screw assembly adjusts spark gap quickly and easily. Includes safety shield.



## COIL-ON SPARK TESTER

Part No. 458

For ignition systems with coil-on plugs, including Ford, Chrysler, Mitsubishi, Nissan and more. Quick way to test for no-start conditions. Gap adjusts from 0 to 40kV. 12" ground wire.



## EXTENDED SMALL ENGINE SPARK TESTER

Part No. 862

This is specially produced for small engines and has a long lead. The 3rd "grounding pin" allows spark to jump the gap in non-battery applications. Black backdrop lens allows for more visibility of spark. Works on most 2 and 4 stroke small engines. Extra-long ground allows for more grounding locations. Hook and loop tape is included for allowing the tool to be strapped facing user. Great for pull start lawn mowers where the user is typically facing the wrong direction of the spark plug.



## 2' SPARK TESTER EXTENSION

Part No. 863

Can be used with spark tester (862, 404 or 458) for additional length. This aids for moving tester's spark window in a more desirable location for visibility.



# ELECTRICAL & BATTERY



## ADJ SMALL ENGINE SPARK TESTER

Part No. 823

Aids the technician in diagnosing problems in ignition systems without having to remove any ignition system parts from the engine.

Scale in 1mm increments with specific locations clearly marked out at 3mm and 6mm



## BACK PROBE SPOONS

Part No. 914

specifically designed to access electrical circuits from the rear of the connector to prevent piercing wires and possibly damaging the circuit. No need to disconnect the connector and terminal. Package includes 4 Spoon Back Probes (2) red, (2) black.



## BACK PROBE KIT

Part No. 490

Sharp, small diameter probes slide along wire into connector to back probe circuit. No need to disconnect connector and terminal. Kit contains 20 pin-type back probes in five different colors.

# ELECTRICAL & BATTERY



## EXTENDED BACK PROBE KIT

Part No. 490X

12-inch color-coded leads feature an alligator clip on one end and a straight back probe on the other. Kit contains 8 pieces.



## HEAVY DUTY BACK PROBE PINS (20 90° PINS)

Part No. 490-90

Sharp, small diameter probes slide along wire into the connector to back probe circuit. Bent at 90 degrees with longer, more durable pins than the original 490 kit. No need to disconnect the connector or terminal.



## HEAVY DUTY BACK PROBE PINS (10-Straight, 5-90°, 5-45°)

Part No. 490-M

(5) 45°. (5) 90° and (10) straight pins in five different colors.





# DIAGNOSTIC & FUEL SYSTEM



## CIRCUIT ENERGIZER

Part No. 852

Portability - Can be used with most all 12 Volt Power sources by utilizing the alligator clips for power connection. Factory correct terminals mean less need to back probe (ensures good connection) saving time. Isolates component from the rest of the circuit which results in less damage to entire wiring/computer modules. Applies power and ground.



## GM CARB. ADJUSTMENT TOOL

Part No. 350

For all 1979 and up GM with carburetors. Flex Shaft tool makes reaching and adjusting idle mixture screws east. One end fits "Double-D" screws and the other 4.5 mm hex heads. Two tools in one.



## BACK PRESSURE TEST KIT

Part No. 389

Aids in diagnosing clogged or restricted exhaust systems. Allows comparing backpressure readings ahead and behind of suspected restriction. Ideal for diagnosing clogged catalytic converters, collapsed exhaust pipes, etc. Kit includes small hole punch for use with air hammer, 5/16" X 1/2" self-tapping bolt and test adapter. Use self-tapping bolts to plug hole after test is completed. (Note: Do not install directly into catalytic converter or muffler.) Gauge not included. Use 0 to 15 pound pressure gauge.



## PRO EXHAUST BACK PRESSURE KIT

Part No. 481

Take readings while road testing vehicle. Compare pressure ahead and behind suspected restriction, like a catalytic converter or muffler. Includes punch, 5/16"x1/2 self-tapping bolts, test adapter, 12/18mm fitting for oxygen sensor port, 8-Ft. of heat resistant silicone tipped hose and 0-15 Psi gauge.

# TERMINAL TOOLS & TEST KITS

## DEUTSCH TERMINAL REMOVAL TOOLS

Instead of cluttering your toolbox with unused sizes of Deutsch Tools, now you can buy just the size you need. Tools fit Deutsch HD10, HD20 and HD30 Series connectors plus Deutsch Jiffy Splices. Deutsch wire terminals have a special security collar that the connector tabs lock against. Tools are designed to slide over the wire in the rear of the connector to release the locking tabs.

Deutsch terminals and connectors are found on Chrysler, GM, AGCO, John Deere, Case, Bobcat, Caterpillar, Harley Davidson, Mercury outboards, Kenworth, Peterbuilt, White and other HD applications.



**Part No. 582**

Red plastic tool fits 20-24 gauge wire sizes. Now available in a convenient package of three.



**Part No. 583**

Lt. Blue plastic tool fits 16-18 gauge wire sizes. Now available in a convenient package of three.



**Part No. 584**

Green plastic tool fits 14-16 gauge wire sizes. Now available in a convenient package of three.

## DEUTSCH TERMINAL REMOVAL TOOL KIT

Part No. 483

The tool works on Deutsch HD10, HD20 and HD30 Series connectors, plus Deutsch Jiffy Splices. Deutsch connectors are marked by name for easy identification. Kit contains six tools to fit the following wire sizes: 4, 8, 12, 14, 16 and 20 gauge. Deutsch terminals and connectors are factory OEM on many automotive, heavy duty truck and industrial applications.



## PROFESSIONAL DEUTSCH TERMINAL TOOL KIT

Part No. 588

The tools in the Professional Terminal Release Tool Kit are made of stainless steel and were designed especially for the professional technician. The kit is packaged in a custom pouch and includes (3) tools for different sized wire and contacts:

14-16 AWG & Size 14 Contacts

16-18 AWG & Size 18 Contacts

20-24 AWG & Size 20 Contacts



# TERMINAL TOOLS & TEST KITS



## TERMINAL RELEASE TOOL KIT

Part No. 493

Tools quickly and easily disassemble automotive connectors to remove faulty terminals. Eliminates connector damage and is easier and faster than prying connectors apart with a screwdriver. Includes seven terminal tools to fit the most common automotive connectors. Each tool has a specially designed tip to depress the connector locking tab that secures the terminal.



## TERMINAL RELEASE TOOL KIT II

Part No. 595

Includes six terminal tools to fit the most common automotive connectors. Each tool has a specially designed tip to depress the connector locking tab that secures the terminal.

Applications include: Tyco HD Series, Delphi 50 Series, Bosch Compact Series, Tyco/Lear Timer Series, Delphi Fuse Block & Relays centers, Delphi Micro/Metri Pak Series, & ITT Cannon/Molex Small Round Pin Series Connectors.



## TERMINAL RELEASE TOOL KIT MASTER

Part No. 495

Tools quickly remove faulty terminals from connectors. Eliminates connector damage. 12 terminal release tools to fit the most common automotive connectors.

# TERMINAL TOOLS & TEST KITS



## MASTER TERMINAL TOOL KIT

Part No. 935

Tools quickly & easily disassemble connectors to remove faulty terminals. Each tool is specially designed to depress locking tabs in different connectors. Eliminates connector damage. Is easier & faster than prying connectors apart with a screwdriver.

Kit Includes: (23) Terminal Tools, (6) Deutsch Terminal Tools & (1) Brass Brush



## ELECTRICAL TESTING & REPAIR KIT

Part No. 520

This Electrical Testing & Circuit Repair Kit is designed to test and replace defective terminals. Included in this kit are all of the necessary jumper wires/test leads, circuit tester, back probes, terminals, butt splices, terminal release tools and heat shrink to repair most damaged circuits. If a terminal is deemed defective, simply remove the terminal using the correct terminal release tool provided in the 520 kit, cut the defective wire off, and splice in a new wire using the parts provided in the kit.

The instructions in this kit cover how to properly test circuits identifying which jumper wire and replacement pigtails are needed, instructions to correctly splice in a new pigtail, and terminal release tool instructions.



## DEUTSCH CONNECTOR & TERMINAL KIT

Part No. 521

The 521 Deutsch Connector & Terminal Kit is designed to replace Deutsch circuit. 2, 3, 4, 6, & 8 cavity connectors are included for replacement on the most common Deutsch connectors.

Kit contents: Male & Female for each connector size and locks for each.

# TERMINAL TOOLS & TEST KITS



## DEUTSCH JUMPER WIRE KIT

Part No. 508

Kit contains three sets of (2) jumper wires for three different sizes (14, 16, & 20 Contact Sizes) & 4 terminal tools to remove damaged terminals. Jumper wires are used to test possibly defective terminals and connectors and to check current flow. Terminal tools are used to release defective contacts.



## DEUTSCH JUMPER WIRE REPAIR KIT

Part No. 508RPL

Deutsch replacement wires come with machine crimped terminals to ensure wire and terminals are properly attached.

Common applications include: Agricultural, construction, marine and recreational vehicles. Prevents corrosion and circuit shorts from improperly crimped terminals. Saves technician time and money of buying expensive crimping tools. Both male and female contacts are included (5 of each) for the most common Deutsch circuits (sizes 14, 16, and 20). Butt splices included. Heat shrink with corrosion resistant adhesive included for splicing wires.



## DELPHI JUMPER WIRE & REPLACEMENT KIT

Part No. 513

Necessary terminals included to remove damaged terminals from connector. Delphi replacement wires come with machine crimped terminals to ensure wire and terminals are properly attached.

Common applications include: Most domestic vehicles (mainly GMC, Cadillac, and Chevy), agriculture and construction vehicles. Can be used as single test lead or as jumper wires. Saves technician time and money buying expensive crimping tools. Both male and female contacts are included (3 of each) for the most common Delphi circuits (Metri-Pack, Weather Pack and GT Series). Butt splices included. Heat shrink with corrosion resistant adhesive included for splicing wires.

# TERMINAL TOOLS & TEST KITS

## BOSCH JUMPER WIRE KIT

Part No. 512

Bosch Jumper Wire Kit allows technicians to test the current inside circuits. It also allows testing for connectors using both BDK & JPT series terminals.

Common applications include: European vehicle and injectors on most on foreign and domestic vehicles. Can be used as a single test lead or as jumper wires. Necessary terminals included to remove damaged terminals from connector replacement parts for defective terminals are in the THX512RPL Kit.



## BOSCH JUMPER WIRE REPAIR KIT

Part No. 512RPL

Bosch replacement wires come with machine crimped terminals to ensure wire and terminals are properly attached.

Common applications include: European vehicle and injectors on most foreign and domestic vehicles. Prevents corrosion and circuit shorts from improperly crimped terminals. Saves technician time and money buying expensive crimping tools. Both male and female contacts are included (5 of each) for the most common Bosch circuits (BDK & JPT Series). Butt splices included. Heat shrink with corrosion resistant adhesive included for splicing wires.



# COOLING SYSTEM & PLUGS



## HEATER CORE BACK FLUSH TOOL

Part No. 356

Fits 1/2", 5/8", & 3/4" heater hoses. No need to use acids or caustic solutions. Saves costly replacement of even most stubbornly clogged heater cores. Made of corrosion resistant aluminum. Basic garden hose hook-up cleans cooling systems and heater cores without disassembly.



## HEATER CORE BACK FLUSH TOOL WITH AIR ASSIST

Part No. 815

Thexton's Heater Core Back Flush Tool with Air Assist fit 1/2", 5/8", and 3/4" heater hoses and uses standard garden hose for water and 1/8" NPT for shop air fitting. Basic garden hose hook-up cleans cooling system & heater cores without disassembly. No need to use acids or caustic solutions. Radiator pressure cap prevents over boosting. Water pressure can be easily controlled with ergonomic handle.



## HIGH PRESSURE AIR/WATER CLEANING WAND

Part No. 467A

Blasts away dirt and debris at a 90 degree angle. Wand reaches 24-inches between radiator and condenser, under mowing decks, etc. Made of zinc-plated steel with adjustable valve assembly. Special tips deliver air or water at a 90 degree angle. Blow gun meets OSHA requirements for blasting away bugs, dirt and debris, and easily converts to a high pressure spray wand for finish cleaning.



## 12 INCH EXTENSION FOR 467A

Part No. 467E

For use with THEXTON Part No. 467A

Cleaning Wand 12-inch extension to increase reach to 36-inches.



# COOLING SYSTEM & PLUGS



## COOLER LINE PLUGS

Part No. 319

Plugs seal male or female fittings. Fit 1/4", 5/16", and 3/8" tubes. Allows vehicle to be driven from service bay with radiator off. Eliminates loss of transmission fluid and messy, slippery floors.



## PLUG ALL STOPPERS

Part No. 312

Plugs fit 1/8", 3/16", 1/4", 5/16", 3/8" and 1/2" hoses. Tapered caps close tubes from 1/8" to 1/2". Use during tune-ups, vacuum tests and more.



## PETCOCK SOCKET

Part No. 423

Fits petcocks used in radiators, engine blocks, etc. Can be used with 1/4" drive ratchet or 7/8" wrench. O-ring on socket helps hold wrench in place. Two slot design prevents damage to ears on petcock.



## RADIATOR PETCOCK SOCKET

Part No. 473

1/4" drive socket is made for narrow-wing plastic drain plug fittings, both plug and flow-through types. Molded plastic socket prevents damaging soft plastic drain fittings. Socket resists automotive chemicals and fits most current vehicles.



## PETCOCK SOCKET SET

Part No. 485

1/4" drive set includes a steel universal socket to fit radiators, engine blocks, storage tanks, etc. with an O-ring to hold a 7/8" wrench in place. Set also has a molded plastic socket to fit narrow-wing plastic drain fittings, both plug and flow-through types.

# BRAKE TOOLS



## UNIVERSAL MASTER CYLINDER BLEEDER KIT

Part No. 803X

Professional kit includes long-lasting aluminum adapters for US and Metric fittings. US adapters: Two 3/8-24, two 7/16-24, two 9/16-18, two 9/16-20, and two 1/2-20. Metric Adapters: Four M10x1.0, four M10x1.25, two M11x1.5, two M12x1.0, two M12x1.5, two M13x1.5, two M14x1.5 and one M10x1.50. Also included: Four Check Valve Assemblies, four Bleeder Hoses, and one Hose Clip

## UNIVERSAL MASTER CYLINDER PLUG KIT

Part No. 803P

U.S. and Metric Master Cylinder Plug Kit, Part No. 803P, enables the technician to isolate the Master Cylinder from other brake components. It tests whether the internal seals are leaking or in good condition. Includes 26 machined aluminum plugs to fit most domestic and import vehicles.



SAE sizes include: Two 3/8-24, two 7/16-24, two 9/16-18, two 9/16-20 and two 1/2-20, Metric sizes: Four M10x1.0, four M10x1.25, two M11x1.5, two M12x1.0, two M12x1.5, two M14 X 1.5, two M13x1.5 and one M10x1.50.

## US/METRIC MASTER CYLINDER BLEEDER KIT

Part No. 804

Similar to No. 803X, but with economical plastic adapters.

US adapters: Two 3/8-24, one 7/16-24, one 9/16-18, one 9/16-20 and two 1/2-20.

Metric adapters: Four M10x1.0, two M10x1.25, one M11x1.5, two M12x1.0, one M12x1.5 and one M13x1.5. Hose holder, hose, thread gauge, and instructions.



# BRAKE TOOLS

## MASTER CYLINDER BRAKE BLEEDER & PLUG KIT

Part No. 849

Thexton's Master Cylinder Brake Bleeding & Plug Kit includes long-lasting aluminum adapters for SAE and Metric fittings.

Bleeder adapters fit most makes and models to remove air from Master Cylinder. Also, includes the new Ford F-150's adapters.

Plugs enable the technician to isolate the Master Cylinder from other brake components.

Plugs test whether the internal seals are leaking or in good condition.

Includes bleeder & plug adapters for the following:  
SAE: (2) 3/8-24, (2) 7/16-24, (2) 9/16-18, (2) 9/16-20, and (2) 1/2-20. Metric: (4) M10x1.0, (4) M10x1.25, (1) M10x 1.5, (2) M11x1.5, (2) M12x1.0, (2) M12x1.5, (2) M13x1.5 (2) M14x1.5. Also included: (4) Check Valve Assemblies, (4) Bleeder Hoses, and (1) Tubing Holder



## GM "W" SINGLE SPRING BRAKE TOOL

Part No. 832

Ergonomically engineered mechanical advantage.

Works with large & small "W" springs.

Is commonly found on 09' & older trucks, SUV's, & cars.

The inside design allows technician obstacle free use.



# LUBE TOOLS



## RIGHT ANGLE GREASE ADAPTER

Part No. 418

Fits grease fittings in confined areas, such as lower ball joints. Special seal and slot in coupler housing provides 90 degree access. Fits all standard grease guns and can be used as general purpose grease coupler.



## RIGHT ANGLE GREASE ADAPTER (12 PACK)

Part No. 418-12

Fits grease fittings in confined areas, such as lower ball joints. Special seal and slot in coupler housing provides 90 degree access. Fits all standard grease guns and can be used as general purpose grease coupler.



## QUICK GREASE COUPLER ADAPTER

Part No. 446

Makes changing grease couplers fast and easy. Allows using standard grease gun without changing coupler for every application. Made of high strength aluminum. Uses 1/8" male pipe nipple.



## PROFESSIONAL LUBE KIT

Part No. 444

Three piece lubrication kit allows reaching zerks in the most confined areas (i.e. lower ball joints on front wheel drive cars, inner tie rod ends, etc.). Use with any standard grease gun.

Kit Includes: No. 418 Right Angle Grease Fitting Coupler, heavy-duty 12" flexible hose extension with 1/8" NPT fittings, and No. 446 Quick Change Adapter.

# SPECIALTY TOOLS

## WIRE INSERTION TOOL KIT

Part No. 926

Great for installing wires for audio electronics, aftermarket lighting, alarm systems, remote start and more. Long steel tube provides enough access to feed wires through the other side of the firewall, even in marine applications. Sharp point and solid handle allow the user to easily pierce through firewalls, rubber grommets, and panels. 3/8" tubing comes with a 35° bend which allows for more direction and control of pull-through wire. The supplied special tubing allows the user to feed the tubing through the tool and is crimpable. This allows the technician to crimp the new wire onto the pull through tubing, eliminating electrical tape bunches and messes.



## RELAY BYPASS KIT

Part No. 927

Bypass relays to test and activate components. Also, tests circuitry to determine faulty wiring. Extended 5 foot cord allows the technician to test the component visually or audibly when activated. Custom molded relays dissolve the need to determine which circuit is the power, ground, or signal. 4 different tools cover the majority of foreign & domestic relay applications.



# SPECIALTY TOOLS



## THROTTLE PEDAL DEPRESSOR

Part No. 393

Attaches to steering wheel and depresses throttle pedal. Quickly adjusts RPM to desired setting. Saves time on air conditioning work, fuel injection cleaning, cylinder balance tests, tune-ups, etc.



## POWER STEERING BELT TOOL

Part No. 383

Heat-treated steel tool tightens belt on GM-type Saginaw pumps. Slips over bracket to eliminate damage to pump housing. Use with 1/2" drive ratchet or breaker bar. Improved design resists breakage.



## HOOD/TAILGATE PROP

Part No. 430

Clamps to weak gas cylinder lifts to hold up hood or tailgate. Won't damage cylinder rod. Eliminates clumsy sticks or props.

# SPECIALTY TOOLS



## UNIVERSAL THREAD GAUGES

Part No. 432

Identifies bolts, fittings, pipe threads and spark plugs with US or metric threads. Aluminum gauges identify: 1) US threads from #5 to 3/4" and pitch of 10TPI to 44TPI; 2) Metric threads from 2.5 to 22mm and pitch of .45 to 2.5mm; 3) Pipe threads 1/16" to 1/2" with 14TPI to 27TPI; and 4) Spark plug threads 10 to 18mm.



## SMALL FASTENER REMOVAL KIT

Part No. 482

Tool uses air power to break loose frozen or rusted fasteners. Hardened steel shaft with 1/4" Hex Bit Holder, cushioned handle, and four screw bits.



## RAPID CORE REMOVER

Part No. 819

Attaches directly to drill with 1/4 hex shank or can be used by hand.

4in lb clutch to prevent over tightening

Fits most standard size tire valves.

Hex end to fit with 1/4" drive

# SPECIALTY TOOLS



## 14MM X 1.25 WHEEL STUD PILOT PIN

Part No. 498

Allows the technician to hang wheel without having to balance the wheel on the lip of the hub. Keeps rotor aligned with hub. Prevents wheel from falling causing damage. Fits: BMW 09'-newer 6 Series, 7 Series, X1, X3, X5, & X6. Mini Cooper 09' and Newer.



## 14MM WHEEL STUD PILOT PIN

Part No. 499

Allows the technician to hang wheel and tire without having to balance wheel on lip of hub. 14mm pins simply screw into wheel bolt hole and are made from high grade steel. Fits: Audi, BMW, VW, Mercedes and Porsche vehicles with 14mm wheel lug bolts.



## 12MM WHEEL STUD PILOT PIN

Part No. 500

Allows the technician to hang wheel and tire without having to balance wheel on lip of hub. 12mm pins simply screw into wheel bolt hole and are made from high grade steel. Fits: Audi, BMW, VW, Mercedes and Porsche Vehicles with 12mm wheel lug bolts.



# SPECIALTY TOOLS



## 12MM X 1.25 WHEEL STUD PILOT PIN

Part No. 503

Allows the technician to hang wheel without having to balance the wheel on the lip of the hub. Keeps rotor aligned with hub. Fits: Fiat 500, 2013-Present Dodge Darts.



## HEAVY DUTY PILOT PIN

Part No. 591

Protects threads from damage, saves time on wheel installation and centers the tire for better tire wear. Mainly used on heavy duty trucks/ semi trucks.



## WHEEL STUD PILOT PIN KIT

Part No. 502

Kit includes Thexton part numbers 498, 499, and 500

P/N 498 Applications: BMW 09, Newer 6 Series, 7 Series, X1, X3, X5, X6, and Mini Cooper 09 and Newer.

P/N 499 Applications: AUDI, Most BMW, VW, and PORSCHE vehicles with 14MM wheel lug bolts.

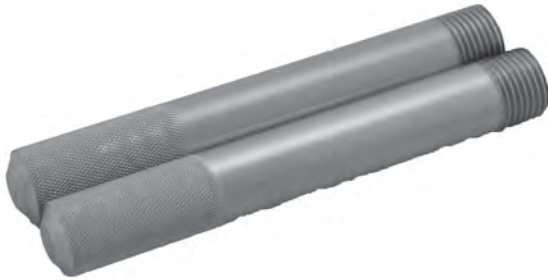
P/N 500 Applications: AUDI, Most BMW, VW, and PORSCHE vehicles with 12MM wheel lug bolts.

Allows tech to hang wheel without having to balance the wheel on the lip of the hub.

Pins are made of high grade steel for strength.

Pins are Zinc plated for visibility and durability.

# SPECIALTY TOOLS



## **Dodge Promaster Wheel Pilot Pins**

Part No. 910

Size: M16 x 1.5

Ram Promaster 1500, 2500,3500 Model Year: 2014-2019

It allows the technician to hang the wheel without having to balance the wheel on the lip of the hub.

It helps to align the rotor.



## **VW/AUDI LOCK CARRIER TOOL SET**

Part No. 837

Pins are used to slide out the front carrier for servicing components.

Allows more clearance, no need to disconnect components.

Double-ended, M8 and M10 threads for dual