

TERAFLEX

PRODUCT INSTALLATION GUIDE

JK Rear PreRunner SpeedBump

Part # 1958260



Important Notes: This instruction is for the PreRunner lift kit only!

Any variance in spring height and shock choice will change how the speedbumps need to be mounted.

Prior to beginning this or any installation read these instructions to familiarize yourself with the required steps and evaluate if you are experienced and capable to personally perform these modifications.

Refer to the parts list to ensure that all necessary components and hardware has been included. If any parts are missing please contact your local retailer for assistance.

Tools Required:

- Set of metric and standard sockets and wrenches
- Cut off wheel
- Grinder
- Welder
- Oxy Acetylene torch
- Silicon
- 7/16" allen
- Black paint
- Tape measure
- Square
- Scribe tool

1958260 JK Rear Bracket & Speedbumps kit for PreRunner

Component Item ID	Item Name	Qty Per Assy
50	Bolt 3/8"-16 UNC x 1.5" Long Flat Socket Head Cap Screw Stainless Steel	2
179	Bolt 5/16"-18 UNC x 1.25" Long Flat Head Socket Cap Screw	4
183	Bolt 1/4"-20 UNC x 1-1/4" Long Hex Head Fully Threaded	2
630	Nut 5/16"-18 UNC Nylock	4
953750	Speedbump Front SINGLE Complete 3" Travel	2
953757	Speedbump Front 3" & 4" Delrin Impact Pad for tip of Front Shaft	2
954600	Bumpstop JK Rear Lower 3/4" tall Extruded UHMW	2
954770	Speedbump Rear JK Cylinder Mounting Sleeve with Clamp	2

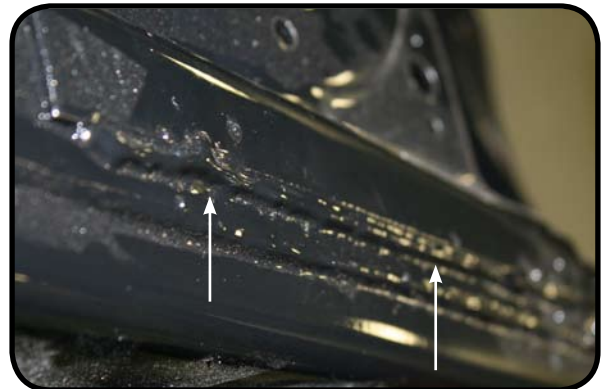
1. Lift the vehicle and support under the frame with jack stands. Make sure that the axle will drop far enough to remove the rear coil spring.
2. Remove the shocks and rear coil springs.
3. Remove the factory bump stop mount using a cut off wheel, torch or equivalent. Grind the frame flush after removal.
4. Using the 3/4" symmetrical holes on the frame measure 9 1/8" back. Using a square scribe the line onto the frame.



5. Measure 2 1/2" forward from the rear scribe line. Mark and use a square to mark the area that will be removed.



6. The depth of the cut needs to be 1 1/8" on the top and bottom of the frame. This should put the new speedbump mount flush with the coil bucket weld on the top of the frame. (Use the arrows below for reference. View from the top of the frame.)



7. Using a cut off wheel cut in from the scribe lines at a 45 degree angle.



8. Using a torch cut out the top and the bottom of the frame.



9. Remove the piece of the frame and grind to fit the new speedbump mount.



10. Place speedbump mount in the frame so the bottom of the mount is 1/8" below the frame and tack it into place.



11. Weld in the new mounts and paint all of the raw areas.



12. Reroute the brake line behind the speedbump mount. You will need to straighten the brake line to do so.
13. Cut the plastic and pinch weld above the speedbump mount so that the speedbump will not make contact with the body.



14. Install the TeraFlex speedbump into the new mount. Use silicon on the speedbump and slide it up into the mount. Use the supplied bolt to tighten the pinch clamp.



15. Install the new bumpstop pads on the axle using the supplied hardware.



16. Reinstall the rear coil springs and shocks.

