

TERRA FLEX

PRODUCT INSTALLATION GUIDE

JK Flexarm Cam-Bolt Washers

Part # 4951700



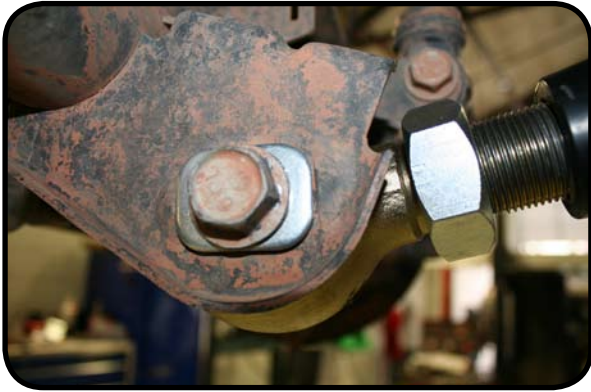
Important Notes:

Prior to beginning this or any installation read these instructions to familiarize yourself with the required steps and evaluate if you are experienced and capable to personally perform these modifications.

Refer to the parts list to ensure that all necessary components and hardware has been included. If any parts are missing please contact your local retailer for assistance.

Tools Required:
21mm socket and wrench

1. Remove the front lower control arm bolts using a 21mm socket and wrench.
2. Using the new cam-bolt washers Install them on both sides of the control arm mounts. Reinstall the bolts and torque to 125 Ft-lbs.



3. Remove the rear upper control arm bolts using a 21mm socket.
4. Using the new cam-bolt washers Install them on both sides of the control arm mounts. Reinstall the bolts and torque to 75 Ft-lbs.

