



JK Nebo Raised Rack Instructions

Kit # 4722070 JK Nebo Raised Rack Kit (Silver)

Kit # 4722075 JK Nebo Raised Rack Kit (Black)



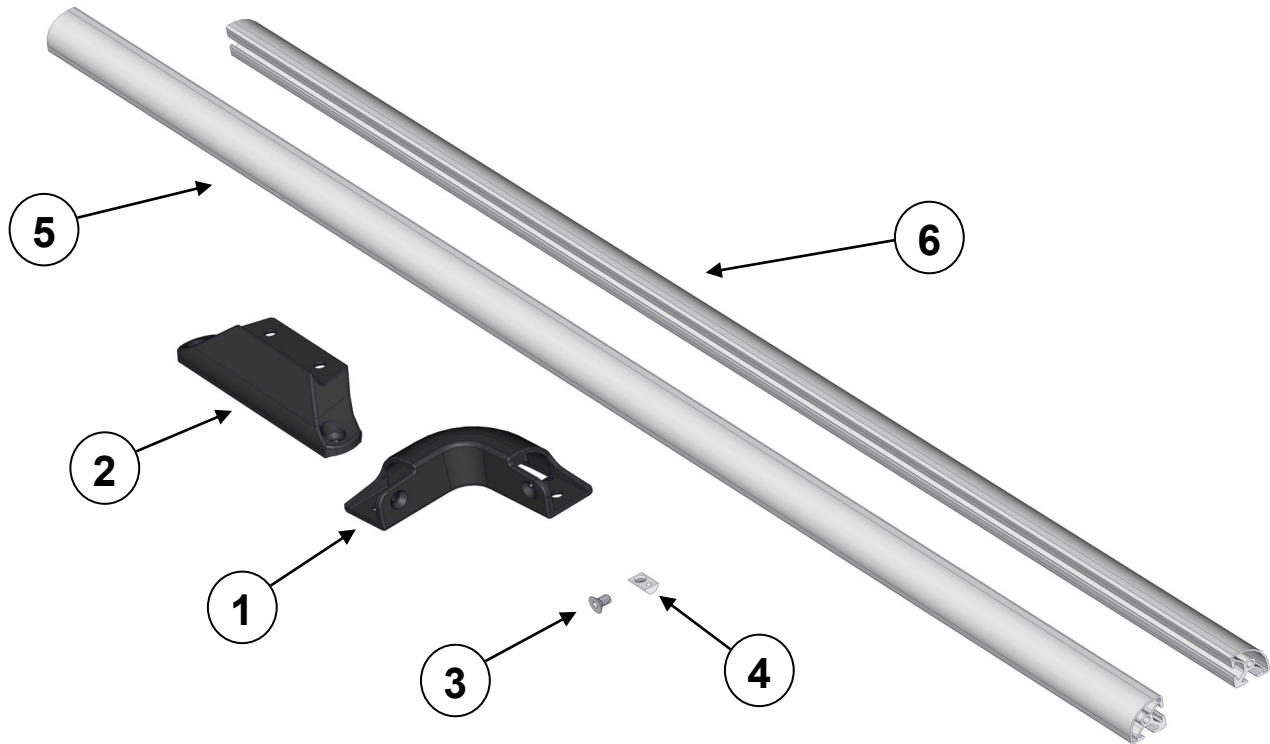
Important Notes:

Prior to beginning this installation, read these instructions to familiarize yourself with the required steps and evaluate if you are experienced and capable to personally perform these modifications. A factory service and owners manual should be used in conjunction with these installation instructions.

Refer to the parts list to ensure that all necessary components and hardware has been included. If any parts are missing please contact your local TeraFlex dealer for assistance.

Tools needed:

- This installation guide
- 4mm Allen Tool
- Small Flat Head Screw Driver



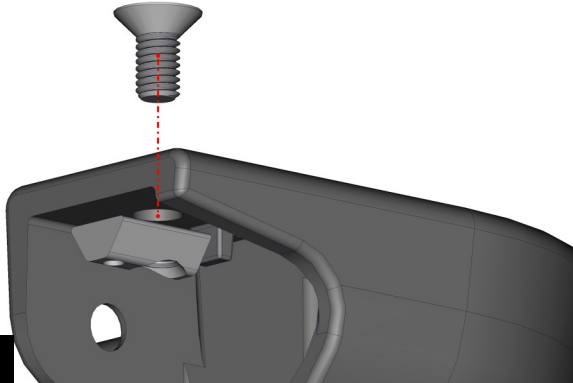
Parts List - Kit # 4722070 Silver

Item No.	Part No.	Description	QTY.
1	300-03-001	Accessory, Roof Rack, 90 Degree Corner, Al Rail Storage Rack	4
2	300-03-002	Accessory, Roof Rack Riser, Raised Rail, Nebo	4
3	330	Bolt M6 x 1.0 x 12mm Long Stainless Flat Socket Head Cap Screw	32
4	651380	M6 x 1.0 P Roll-In T-Nut for 10 Series Extrusions	32
5	820003	JK Rear Storage Rack Aluminum Rail Long Side	2
6	820114	JK Rear Storage Rack Aluminum Cross Rail For Nebo Raised Rail Rack Kit (Silver)	2
N/A	600198	Warning Sticker Chromium	1

Parts List - Kit # 4722075 Black

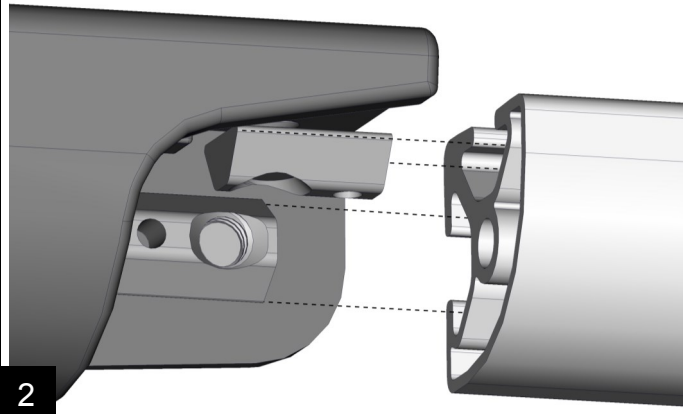
Item No.	Part No.	Description	QTY.
1	300-03-001	Accessory, Roof Rack, 90 Degree Corner, Al Rail Storage Rack	4
2	300-03-002	Accessory, Roof Rack Riser, Raised Rail, Nebo	4
3	330	Bolt M6 x 1.0 x 12mm Long Stainless Flat Socket Head Cap Screw	32
4	651380	M6 x 1.0 P Roll-In T-Nut for 10 Series Extrusions	32
5	820013	JK Rear Storage Rack Aluminum Rail Long Side Black Anodized	2
6	820113	JK Aluminum Cross Rail for Nebo Raise Roof Rack Kit (Black)	2
N/A	600198	Warning Sticker Chromium	1

Loosely install the allen bolts and T-Nuts, as shown, into each of the holes in the corner brackets. There is 4 holes on each of the 4 corner brackets, making 16 total.



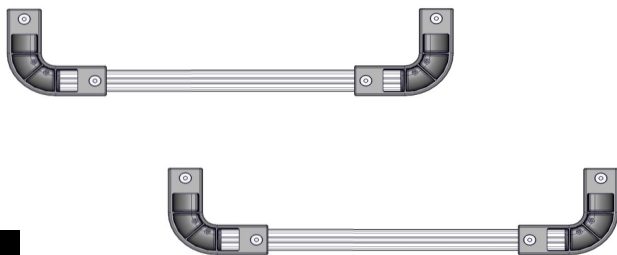
1

Starting with the shorter rails slide a corner for each side. The T-Nuts should be loose enough for them to slide into the rails, as shown.



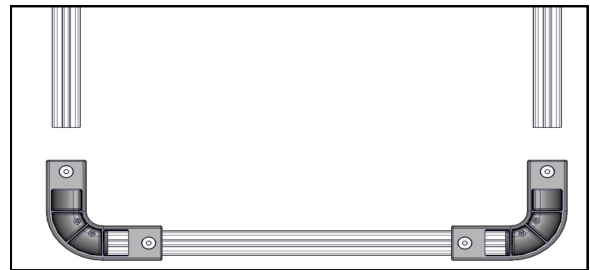
2

Snug down the bolts to keep the rails from sliding out. There should be two sides with corners now.



3

Next, install the longer rails onto one of the short sides and snug down the bolts. Then, installing the remaining side, completing the rail section of the raised rail kit.



4

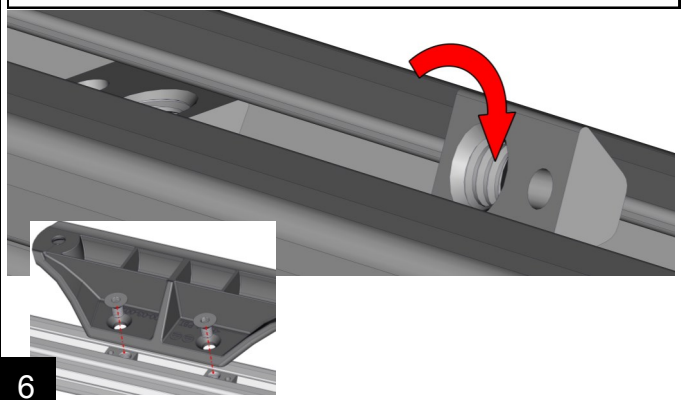
Place this assembled portion of the raised rail, up side down, onto a flat surface. If any side or corner lifts off of the flat surface, loosen some or all of the allen bolts slightly to get the assembly to sit flat. Once all of the corners are sitting flat, tighten the allen bolts.

Torque 105 in-lbs.



5

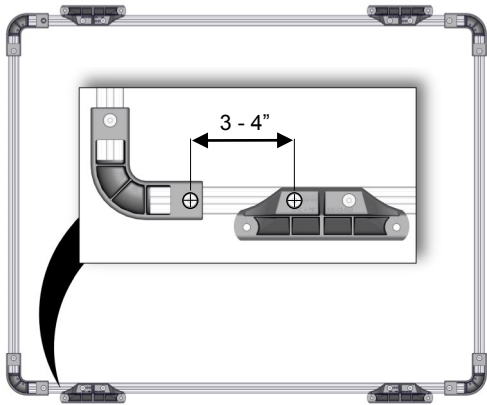
While still up side down, roll the 651380 T-Nuts into the bottom side (side that is facing up) of the longer rails, as shown. Loosely install allen bolts through the Raised Rail mounts and into the T-nuts.



6

Position the mounts evenly from each side, as shown.
Hint: Use the bolt heads as a reference point to help locate the mounts equally from the side. Tighten the allen bolts.

Torque 105 in-lbs.



7

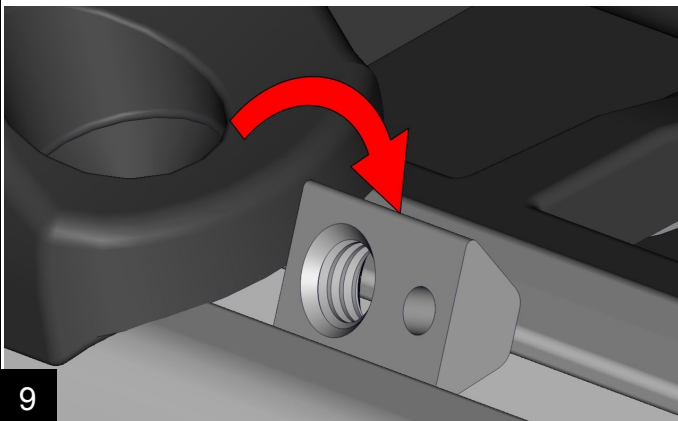
Place the Nebo Raised Rail onto the Nebo Rack. Tentatively center the raised railing over the rack, final position can adjust before everything is tightened.



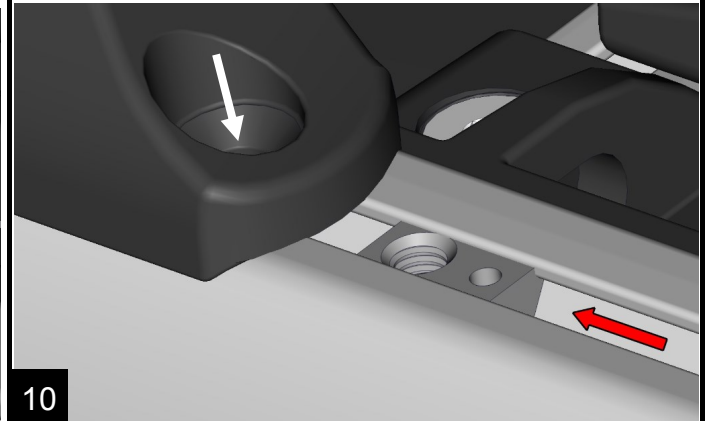
8

Roll a 651380 T-Nut into the Nebo Rack's top rail next to where the Raised Rail mounts.

With a small screw driver slide the T-nut under the raised rail's mount. Line up the nut with the bolt hole in the mount.



9



10

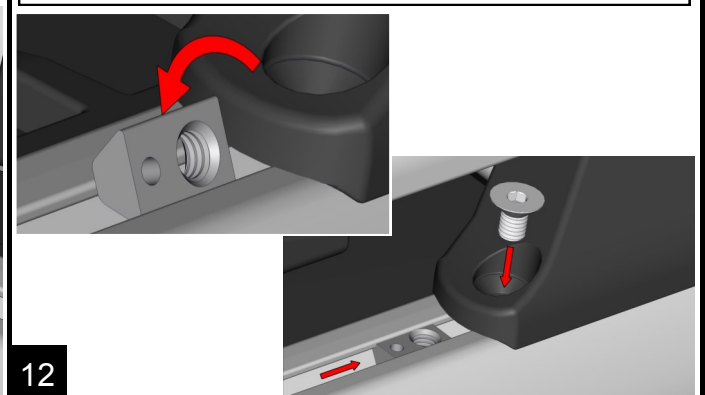
Install a 330 Allen bolt through the bolt hole in the raised rail's mount. Thread the bolt into the T-Nut. Use the small screw driver to help position and hold the T-Nut into place, if needed.

Repeat steps 2 - 4 for the rest of the 7 bolt hole locations, making 8 in total. Center the Raised Rail Rack over the Nebo Rack and tighten the allen bolts.

Torque 105 in-lbs.



11



12

PRODUCT INFORMATION

MAINTENANCE INFORMATION:

It is the buyer's responsibility to have all suspension, drivetrain, steering, and other components checked for proper tightness and torque after the first 100 miles and every 3000 miles after that.

NOTICE TO INSTALLER:

The enclosed "Warning to Driver" sticker must be installed in the vehicle in driver's view. This sticker is to act as a constant safety reminder when operating the vehicle. It is your responsibility as the equipment installer to install the provided sticker and to forward the product instructions to the vehicle's owner for review. If a "Warning to Driver" sticker or product installation guide were not included in the kit, FREE replacement stickers and instructions are available by request. It is the installer's duty to ensure a safe and controllable vehicle after the modifications have been performed.

WARNING:

Neither the seller nor the manufacturer will be liable for any loss, damage, or injury directly or indirectly arising from the use of or inability to determine the use of these products. Before using, the user shall determine the suitability of the products for its intended use, and the user shall assume all responsibility and risk in connection therewith.

WARNING TO DRIVER:

This vehicle has been modified to enhance off road performance and has unique handling characteristics. Use in harsh environments can cause extreme stress on the components. Vehicle should be inspected after being off road to make sure that all the components are in working order and safe to travel on the highway. All fasteners should be checked so that they are at the correct torque specifications as the vibration and stresses from off roading may cause critical fasteners to work loose. Extra care should be taken to inspect the critical components, steering, and brake systems. During each oil change components such as arms, tie rod ends, etc should be greased and checked for excessive wear. Any worn components should be replaced. When returning to the pavement always set or restore tire air pressure to the factory recommendation and connect or engage any disabled sway bar mechanisms. Because of the higher center of gravity and larger tires, this vehicle handles and reacts differently than many passenger cars, both on and off road. You must drive it safely! Extreme care should be taken to prevent vehicle rollover or loss of control, which can result in serious injury or death. Avoid sudden sharp turns or abrupt maneuvers. Generally, braking performance and capabilities are decreased when significantly larger/heavier tires are used, especially when used in combination with transfer case low-range reduction kits. Take this into consideration while driving. Do not add, alter or fabricate any factory or aftermarket parts to increase vehicle height over the intended height of the TeraFlex product purchased. Mixing component brand is not recommended. TeraFlex Inc. will not be responsible for any altered product or any improper installation or use of our products. We will be happy to answer any questions concerning the design, function, and correct use of our products. It is ultimately the buyer's responsibility to have all bolts/nuts checked for tightness after the first 100 miles and then every 3000 miles. Wheel alignment, steering system, suspension and drive line systems must be inspected by a qualified professional mechanic at least every 3000 miles.