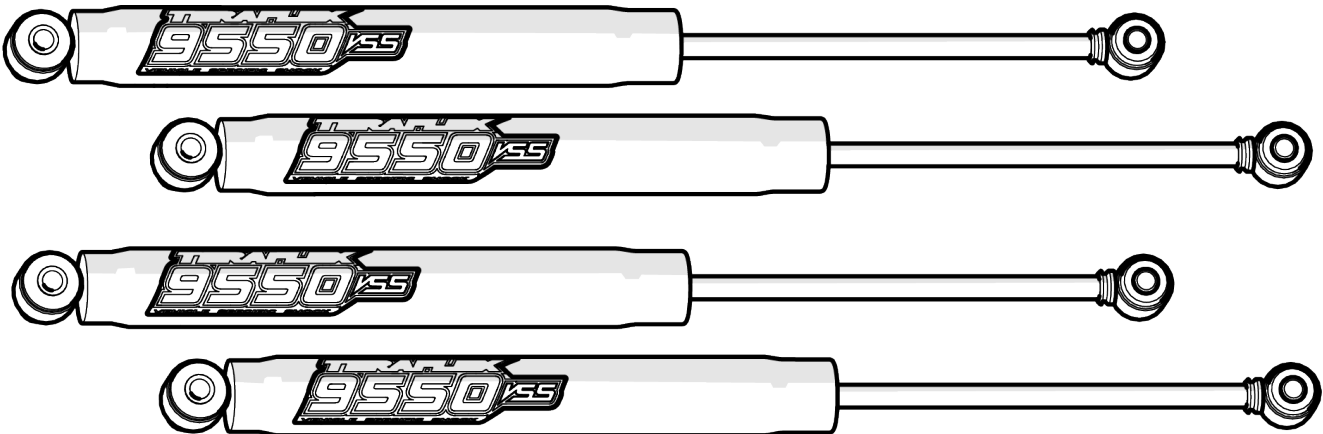




Jeep JL 9550 Shock Install

1545250 JL 2.5"



Important Notes:

Prior to beginning this install, or any installation, read the instructions thoroughly to familiarize yourself with the required steps. Evaluate if you are experienced and capable to personally perform these modifications. A factory service manual should be used in conjunction with these installation instructions.

This product will change the highway handling characteristics of your vehicle, exercise caution. After altering the suspension it is always advisable to have an alignment done by a competent 4 wheel drive shop or by an alignment shop that is experienced with lifted 4 wheel drive vehicles.

Refer to the parts list to ensure that all necessary components and hardware has been included. If any parts are missing please contact your local TeraFlex dealer for assistance.

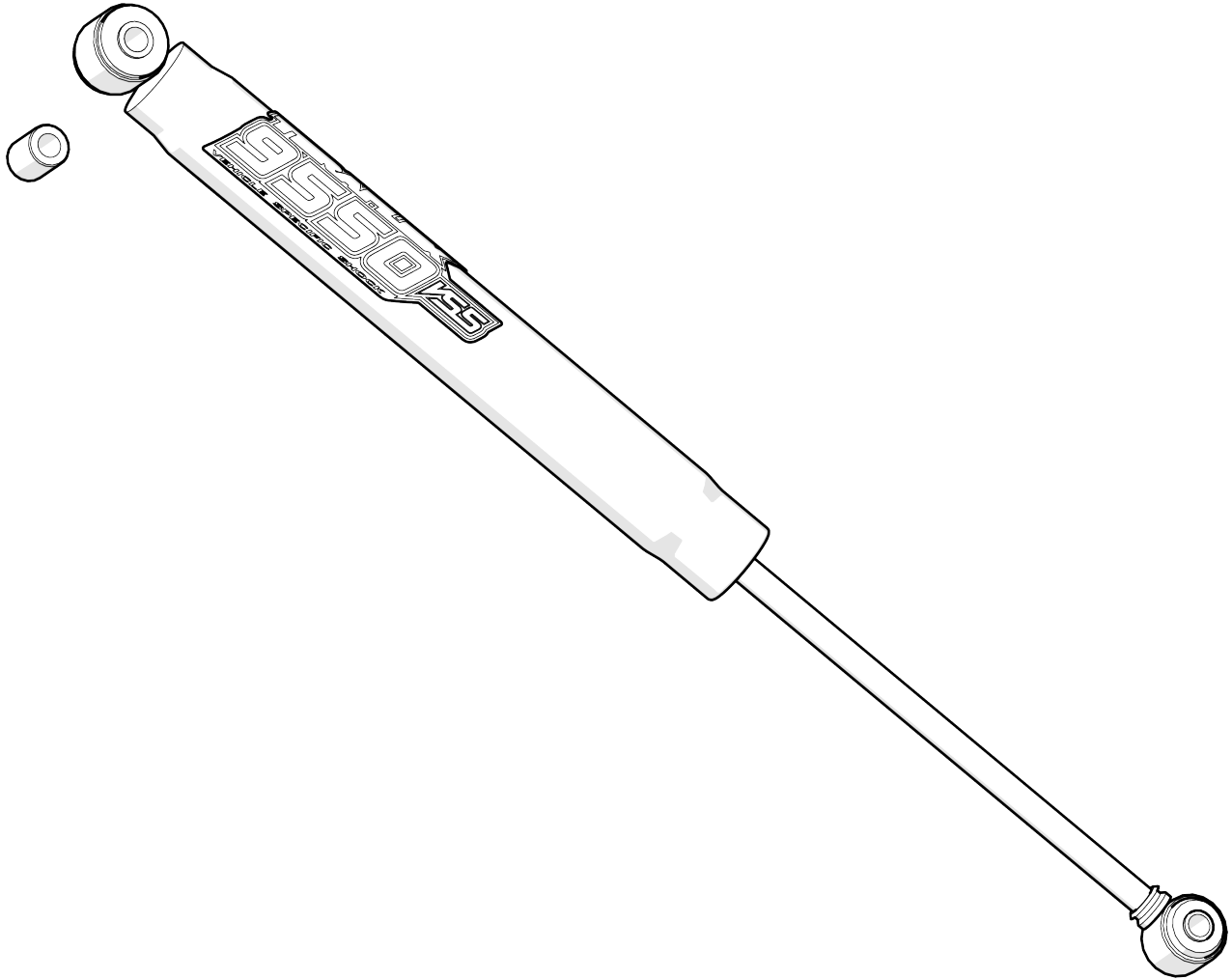
When reinstalling OEM hardware, refer to the torque specs given in the Factory Service Manual.

Tools Needed:

- Metric Sockets and Open End Wrenches
- Torque Wrench
- Factory Service Manual
- General Mechanics Tools

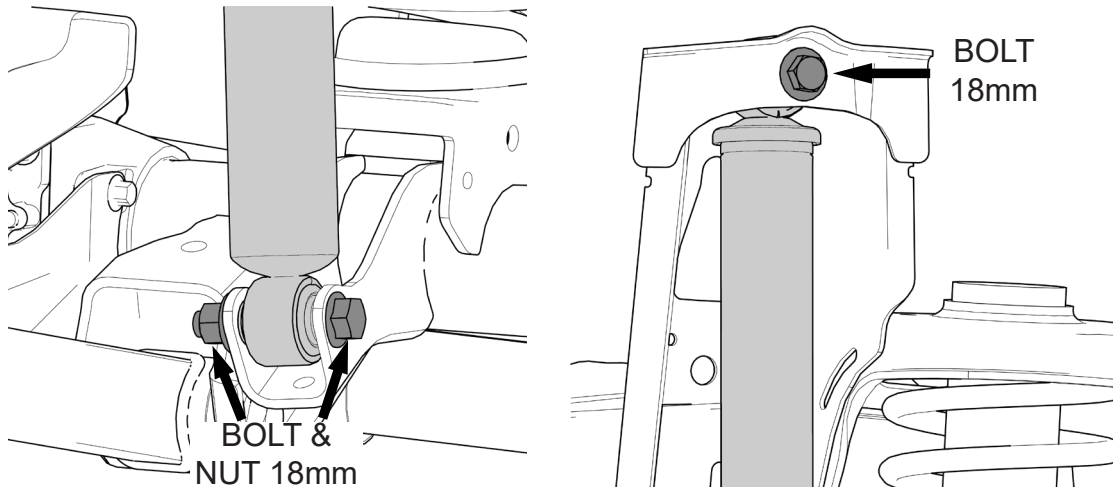
Maintenance Note:

After the first 300 miles and every 3,000 miles after that, re-torque all the suspension components and bolts.



NOTE: THIS INSTALLATION CAN BE DONE WITHOUT LIFTING THE JEEP. IF YOU CHOOSE TO LIFT THE JEEP, REFER TO YOUR OWNERS MANUAL FOR SAFE LIFTING LOCATIONS AND PROCEDURES.

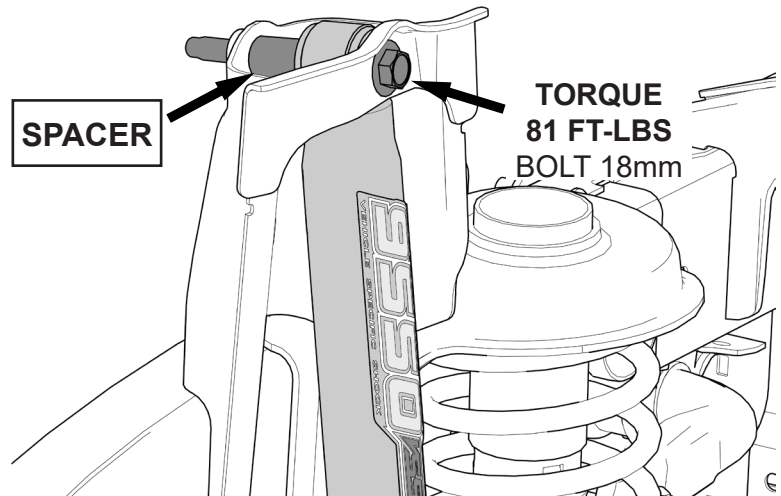
REMOVE THE FRONT SHOCK



1

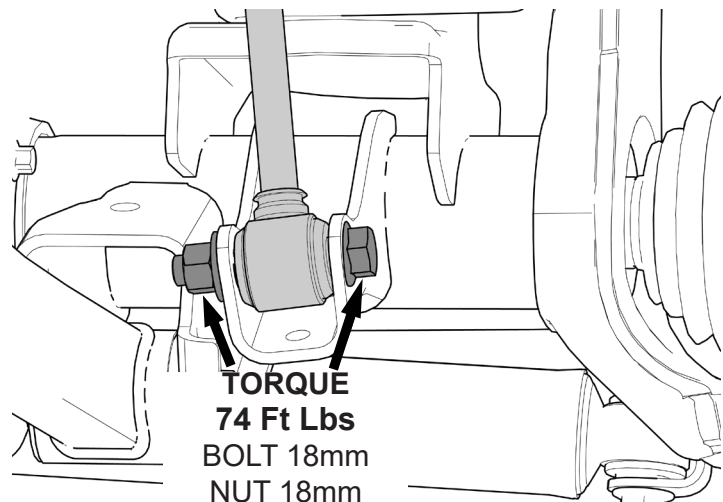
INSTALL THE NEW SHOCK AND SPACER ONTO THE FRAME

NOTE: INSTALL THE SPACER IN BETWEEN THE FRAME AND SHOCK. REINSTALL THE FACTORY HARDWARE.



2

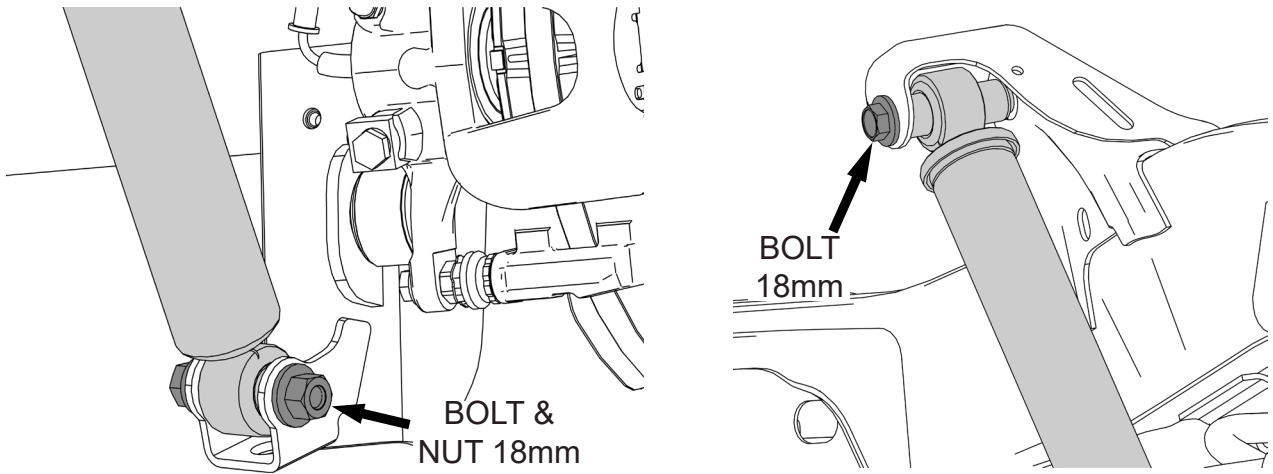
INSTALL THE NEW SHOCK ONTO THE AXLE



3

REMOVE THE REAR SHOCK

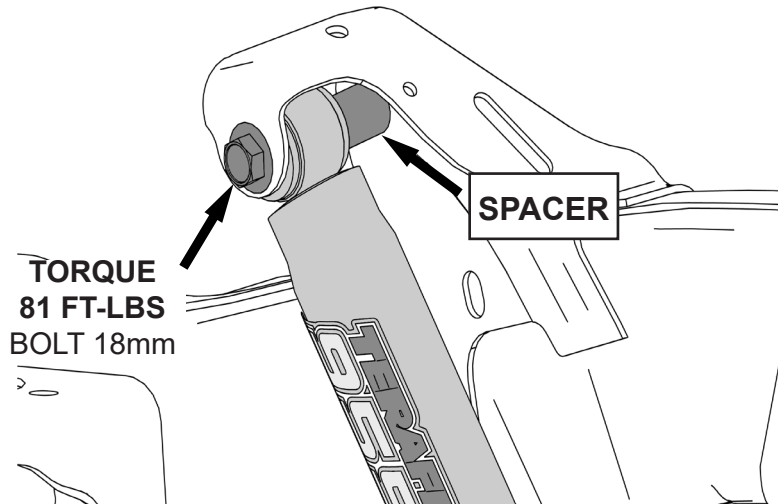
4



INSTALL THE NEW SHOCK AND SPACER ONTO THE FRAME

NOTE: INSTALL THE SPACER IN BETWEEN THE FRAME AND SHOCK. REINSTALL THE FACTORY HARDWARE.

5



INSTALL THE NEW SHOCK ONTO THE AXLE

6

