

Installation Instructions

T-Connector



Hyundai Sonata

⚠ WARNING

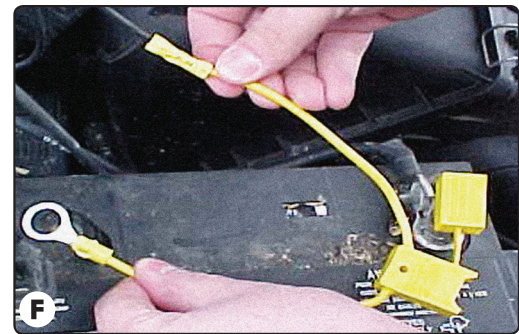
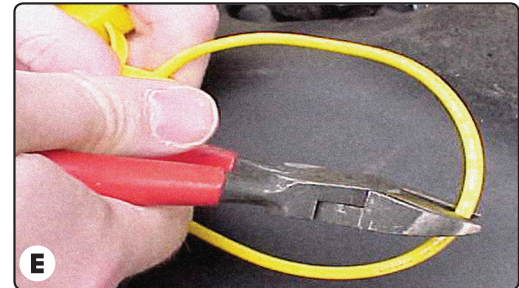
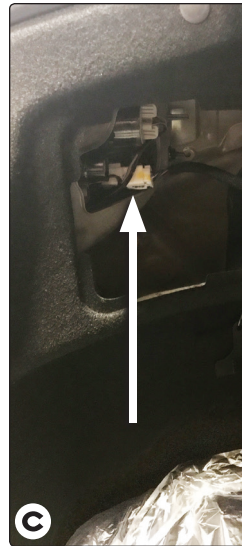


ALWAYS read and follow all warnings and instructions included with purchase before beginning installation. Keep for future reference.

DO NOT exceed lower of towing manufacturing rating (including in your vehicle owner's manual) or specific amperage ratings stated on product.

ALWAYS read, understand and follow all warnings and instructions printed on tow vehicle's battery.

ALWAYS wear safety glasses and use all safety precautions during installation.



TOOLS REQUIRED:

Trim Panel Remover, 10mm Socket & Ratchet or 10mm Wrench, Drill (3/32" Drill Bit), 1/4" socket, Wire Crimpers, Wire Cutters, Philips Head Screwdriver, Test-probe

1. Open trunk. Temporarily remove the rear threshold plate. Partially remove the felt trunk liner behind the taillights. **A B**
2. On the driver and passenger sides of the vehicle, locate the vehicle's taillight wiring harness. The taillight wiring harness will have a connection point, on both sides, matching the ends of the T-One® Connector. Separate this connector, being careful not to break the locking tabs. All connector surfaces should be clean and free of dirt. **C**
3. On the driver's side, insert the T-One® Connector end, with the **yellow** wire, between the vehicle wiring connectors and lock into place. Be careful not to damage the locking tabs and be sure that connectors are fully inserted with locking tabs in place.
4. Route the T-One® Connector end with **green** wire to the passenger's side behind the panels and along the threshold. Plug the T-Connector end with the **green** wire in-between the mating plugs on the Passenger's side taillight socket and vehicle wiring harness.

5. Locate a suitable grounding point near the connector. Clean dirt and rustproofing from the area. Drill a 3/32" hole and secure the **white** wire using the eyelet and screw provided.
⚠ CAUTION
Verify what is behind any surface prior to drilling to avoid damage to the vehicle and/or personal injury. Do not drill into any exposed surfaces.
6. Locate the battery inside the vehicle's trunk. **D** From inside the vehicle, connect the black 12 ga. wire and the **black** wire from the T-One® Connector black box with the supplied yellow butt connector.
7. Disconnect the vehicle's Negative (-) battery cable. If not removed, remove the fuse from the yellow fuse holder (provided). After cutting the fuse holder wire, attach the ring terminal and secure to the vehicle's Positive (+) battery cable. Connect the other end of the fuse holder to the **black** 12 ga. wire, using the yellow butt connector (provided). **E F**

⚠ WARNING

Read and follow all warnings and cautions printed on the tow vehicle's battery.

8. Reconnect the vehicle's Negative (-) battery cable and install the 15 amp fuse into the fuse holder from step 7.

⚠ WARNING

All connections must be complete for the T-One® Connector to function properly. Test and verify installation with a test light or trailer once installed. For initial test, reset vehicle electrical system by temporarily removing the key from the ignition.

9. Locate a flat surface in an out of the way place and mount the T-One® Connector's black box-module, to prevent damage or rattling.
10. Secure the remainder of the T-One® T-Connector harness with the cable ties provided, to prevent damage or rattling and being careful to avoid any areas that would pinch, cut or melt the wire.
11. Replace carpet, and any other clips or panels that were removed during installation being careful not to cut or pinch the wires.

NOTE

Store 4-Flat in trunk area when not in use.



⚠ WARNING

Overloading circuits can cause fires. **DO NOT** exceed stated product ratings. Read vehicle's owner's manual & instruction sheet for additional information.