

Installation Instructions

T-One® Connector



Honda Pilot

⚠ WARNING

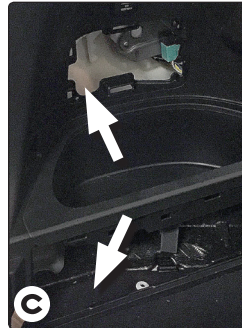
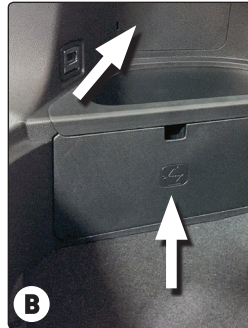
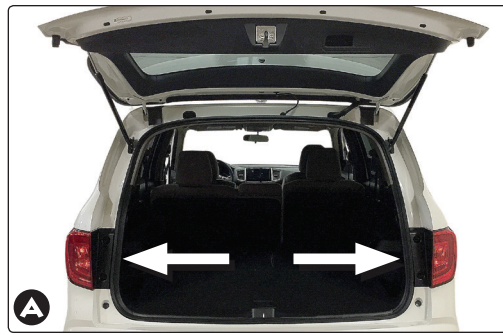


ALWAYS read and follow all warnings and instructions included with purchase before beginning installation. Keep for future reference.

DO NOT exceed lower of towing manufacturing rating (including in your vehicle owner's manual) or specific amperage ratings stated on product.

ALWAYS read, understand and follow all warnings and instructions printed on tow vehicle's battery.

ALWAYS wear safety glasses and use all safety precautions during installation.



TOOLS REQUIRED:

Trim Panel Remover, Drill (3/32" Drill Bit), Philips Head Screwdriver, Test-probe

1. Open the vehicle's rear tailgate. Locate the **white** tow plug by opening the access panel inside of the storage compartment on driver's side **A B C D**.
2. Inside the vehicle's rear cargo area, temporarily remove all floor coverings and cargo trays.
3. Insert the T-One® Connector harness into the vehicle's Tow-Plug harness and lock into place.

NOTE

If the vehicle is equipped with accessory back-up sensor, connect white connector with single **blue** wire from T-One® Connector into mating connector. If not proceed to step 4.

If vehicle is not equipped with back up sensors, connector with **blue** wire will not be used.

⚠ WARNING

All connector surfaces should be clean and free of dirt. Be careful not to damage the locking tabs and be sure that connectors are fully inserted with locking tabs in place.

4. Locate a suitable grounding point near the connector. Clean dirt and rustproofing from the area. Drill a 3/32" hole and secure the **white** wire using the eyelet and screw provided.
 - ⚠ **CAUTION**
Verify what is behind any surface prior to drilling to avoid damage to the vehicle and/or personal injury. Do not drill into any exposed surfaces.
5. Remove the jack storage compartment door and locate the rubber grommet on the floor of the vehicle. Unseat the grommet and discard **B C E**.
6. Route the 4-Flat behind the trim panel over to the grommet area. Route the 4-Flat end thru the grommet hole into the jack storage area. Route to the grommet and seat the grommet inside the hole. Continue to route 4-Flat to the center of the vehicle.
7. Open vehicle hood, and locate the fuse box on the driver side near the front of the vehicle. Unlatch the fuse door to access the fuse area. Locate position #2 labeled (30A) Trl Main. Insert the 30 amp fuse included with the T-One® Connector package in this position. Locate positions #3 labeled (20A) Trl E-Brake and #11 labeled (20A) Trl Charge. Insert the two 20 amp fuses included with the T-One® Connector package in these positions and latch the fuse box **F G**.

⚠ WARNING

All connections must be complete for the T-One® Connector to function properly. Test and verify installation with a test light or trailer once installed. For initial test, reset vehicle electrical system by temporarily removing the key from the ignition.

8. Locate a flat surface in an out of the way place and mount the T-One® Connector's black box-module, to prevent damage or rattling.
9. Secure the remainder of the T-One® Connector harness with the cable ties provided, to prevent damage or rattling and being careful to avoid any areas that would pinch, cut or melt the wire.
10. Replace both access panels, floor trim panels and cargo door removed during installation.
11. Route the 4-Flat harness underneath and to the center of the vehicle. Mount the 4-Flat end in an accessible location with a bracket or electrical box (not included).



⚠ WARNING

Overloading circuits can cause fires. **DO NOT** exceed stated product ratings. Read vehicle's owner's manual & instruction sheet for additional information.