

Installation Instructions

T-One® T-Connector

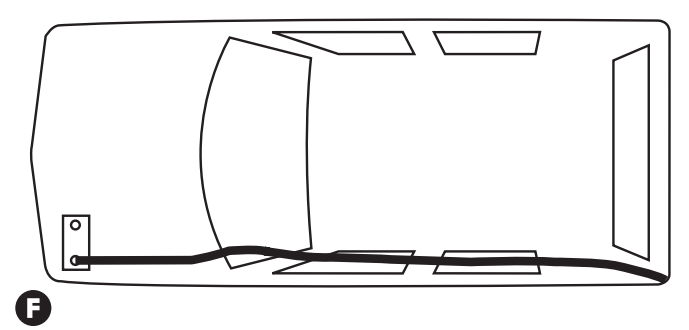
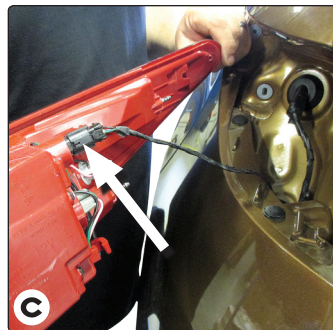
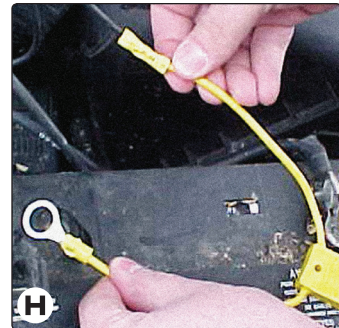
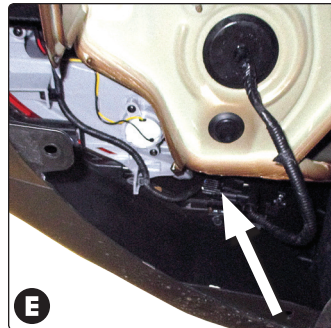
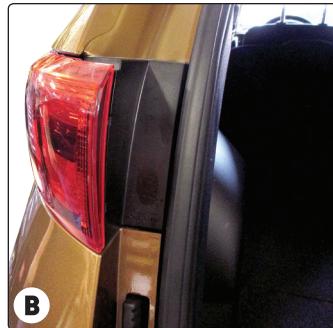
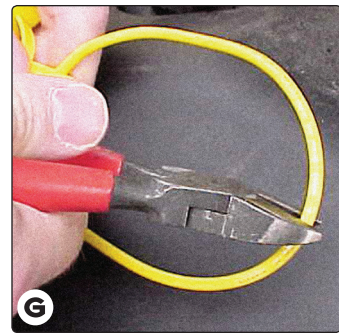
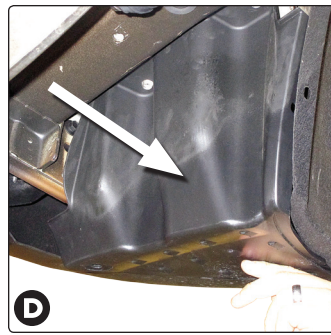
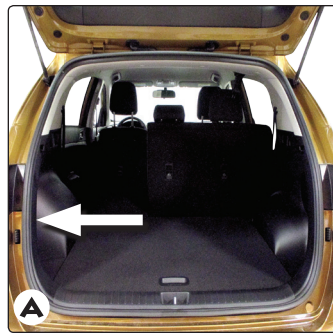


Kia Sportage

⚠ WARNING



ALWAYS read and follow all warnings and instructions included with purchase before beginning installation. Keep for future reference.



TOOLS REQUIRED:

Trim Panel Remover, Drill (3/32" Drill Bit), Philips Head Screwdriver, Test-probe

1. Read and follow all warnings and cautions printed on the tow vehicle's battery. Open rear hatch. On driver's side only, remove two screws on taillight assembly. Then pull the taillight housing directly rearward to remove. Remove the taillight housing and set aside **A B C**.
2. Underneath rear of vehicle, on driver's side, locate the plastic appearance panel. Using a trim panel puller, remove the clips holding it in place. Remove the plastic nuts to remove the panel and set aside **D**.
3. Underneath rear of vehicle, on driver's side, locate vehicle's wiring harness. It will have a connection point matching the T-Connector harness. Separate this connector, being careful not to break the locking tabs. All connector surfaces should be clean and free of dirt **E**.
4. Plug the T-Connector with the **yellow** and **green** wire into the vehicle's mating connector. Be careful not to damage the locking tabs and be sure that the connectors are fully inserted with locking tabs in place.
5. Locate a suitable grounding point near the connector. Clean dirt and rustproofing from the area. Drill a 3/32" hole and secure the **white** wire using the eyelet and screw provided.

⚠ CAUTION

Verify what is behind any surface prior to drilling to avoid damage to the vehicle and/or personal injury. Do not drill into any exposed surfaces.

6. Route T-Connector with **red/brown** wires up to driver's side taillight pocket, exposed in step 1. Plug the T-Connector with the **red/brown** wires into the vehicle's mating connectors. Be careful not to damage the locking tabs and be sure that connectors are fully inserted with locking tabs in place. Reassemble the taillight assembly **G**.
7. On the driver's side, locate the **black** 12 ga. Power wire from the T-Connector box. Attach the **black** 12 ga. wire provided. Route the **black** wire along the exterior frame or follow the existing wiring along the thresholds into the engine compartment up to the battery avoiding areas that may pinch or break the wire **F**.

⚠ WARNING

If routing the wire thru a grommet and along the exterior of the vehicle, be careful to avoid any hot pipes, heat shields, the fuel tank or any other points that may pinch or break the wire.

8. Disconnect the vehicle's Negative (-) battery cable. If not removed, remove the fuse from the yellow fuse holder (provided). After cutting the fuse holder wire **G**, attach the ring terminal and secure to the vehicle's positive (+) battery cable **H**. Connect the other end of the fuse holder to the **black** 12 ga. wire, using the yellow butt connector (provided).

⚠ WARNING

Read and follow all warnings and cautions printed on the tow vehicle's battery.

9. Reconnect the vehicle's negative (-) battery cable and install the 15 amp fuse into the fuse holder from step 8.

⚠ WARNING

All connections must be complete for the T-One® T-Connector to function properly. Test and verify installation with a test light or trailer once installed. For initial test, reset vehicle electrical system by temporarily removing the key from the ignition.

10. Locate a flat surface in an out of the way place and mount the T-One® T-Connector's black box-module, to prevent damage or rattling.
11. Secure the remainder of the T-One® T-Connector harness with the cable ties provided, to prevent damage or rattling and being careful to avoid any areas that would pinch, cut or melt the wire.
12. Replace appearance panel and any other clips that were removed during installation being careful not to cut or pinch the wires.

NOTE

Route the 4-Flat harness underneath and to the center of the vehicle. Mount the 4-Flat end in an accessible location with a bracket or electrical box (not included).



⚠ WARNING

Overloading circuits can cause fires. DO NOT exceed stated product ratings. Read vehicle's owner's manual & instruction sheet for additional information.