

# Installation Instructions

## T-Connector



Honda Ridgeline

### ⚠️ WARNING

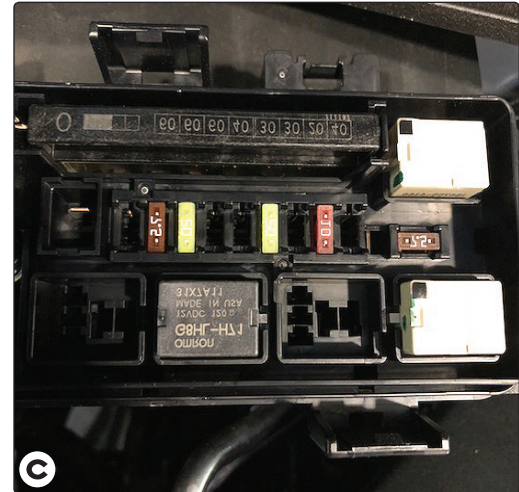
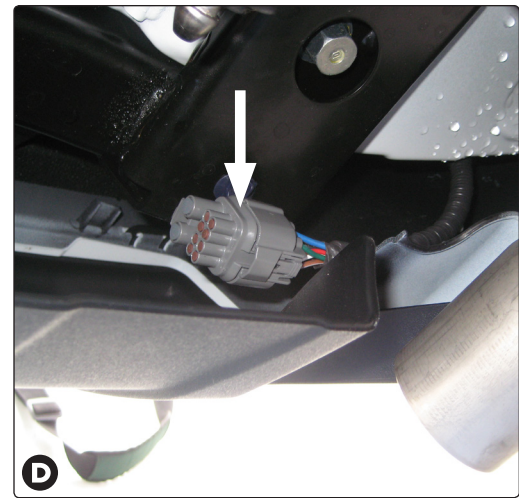
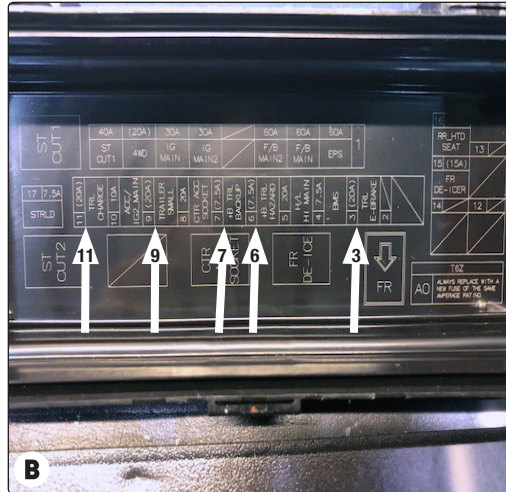
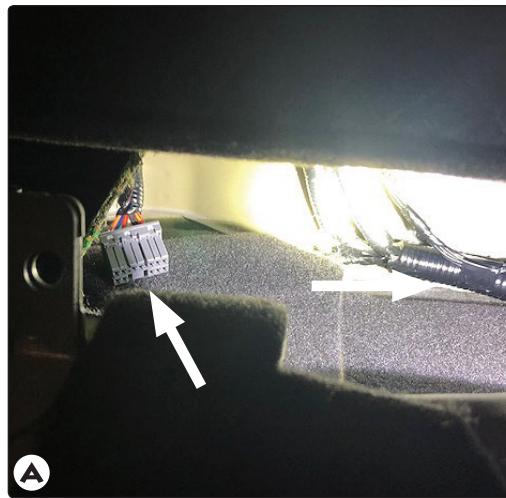


ALWAYS read and follow all warnings and instructions included with purchase before beginning installation. Keep for future reference.

DO NOT exceed lower of towing manufacturing rating (including in your vehicle owner's manual) or specific amperage ratings stated on product.

ALWAYS read, understand and follow all warnings and instructions printed on tow vehicle's battery.

ALWAYS wear safety glasses and use all safety precautions during installation.



### TOOLS REQUIRED:

Trim Panel Remover, Test-probe

1. Open the driver's side rear door to locate the grey 12 pin tow plug connector. It will be located towards the center on the back wall of the cab. **A**
2. Insert the T-One® T-Connector's black box-module into the grey 12 pin tow plug. Be careful not to damage the locking tabs and be sure that connectors are fully inserted with locking tabs in place.
3. Using cable tie or double sided tape provided, mount T-One® T-Connector's black box-module on a flat surface or an out of the way place, to prevent damage or rattling.
4. Reinstall any items removed during installation, being careful not to pinch or cut the wires.
5. Locate the fuse panel located under the hood on the the driver's side. Open the the fuse cover.

Insert the 7.5 Amp Fuses (Provided) in the following locations:

- +B TRL HAZARD, Position 6
- +B TRL BACKUP, Position 7

Insert the 20 Amp Fuses (Provided) in the following locations:

- TRL E-Brake, Position 3
- TRAILER SMALL, Position 9
- TRL CHARGE, Position 11

### ⚠️ WARNING

Replacing fuses that exceed the required amperage could result in damage of the vehicle and or trailer.

**B C**

6. Locate the large grey housing under the vehicle bumper on the driver's side. Remove protective cap, being careful not to break the locking tabs. Ensure that the mating surfaces are free of dirt. Plug towing harness into grey tow plug. Be careful not to damage the locking tabs and be sure that connectors are fully inserted with locking tabs in place. Route the T-Connector harness rearward to the back of the fascia of the bumper. **D**

### ⚠️ WARNING

Route the wire being careful to avoid any hot pipes, heat shields, the fuel tank or any other points that may pinch or break the wire.

7. Plug the 7-way socket (provided) into the Trailer Tow Harness. Route 7-Way to the center of vehicle. Mount the 7-Way end in an accessible location with a bracket or electrical box (not included). Secure the remainder of the T-connector harness with the cable ties provided, to prevent damage or rattling and being careful to avoid any areas that would cut or pinch the wire.

### ⚠️ WARNING

Secure the remainder of the T-Connector harness under the bumper with cable ties provided, being careful to avoid any areas that would cut or pinch the wire.

### ⚠️ WARNING

All connections must be complete for the T-One® T-Connector to function properly. Test and verify installation with a test light or trailer once installed. For initial test, reset vehicle electrical system by temporarily removing the key from the ignition.



### ⚠️ WARNING

Overloading circuits can cause fires. DO NOT exceed stated product ratings. Read vehicle's owner's manual & instruction sheet for additional information.