

advanced FLOW engineering Stage-2 Air Intake

Instruction Manual P/N: TR-3021B-D / TR-3021B-R



Make: **Nissan** Model: **Altima** Year: **2013-2018** Engine: **L4-2.5L**



- Please read the entire instruction manual before proceeding.
- Ensure all components listed are present.
- Ensure you have all necessary tools before proceeding.
- Do not attempt to work on your vehicle when the engine is hot.
- Disconnect the negative battery terminal before proceeding.
- Retain factory parts for future use.

Label	Qty.	Description	Part Number
A1	1	Air Filter (Pro DRY S)	TF-9028D
A2	1	Air Filter (Pro 5R)	TF-9028R
B	1	Tube	05-T3021B1
C	1	Cover	05-T3021B2
D	1	Coupling, Silicone Reducer Hump	05-01305
E	1	Plug, Silicone	05-01387
F	2	Clamp, #044	03-50019
G	2	Screw, Torx: M4	03-50491
H	1	Hose, Fuel: 5/8" (10")	05-00069

Installation will require the following tools:

8mm Nut driver, 10mm Nut Driver, 1/4" Ratchet, 10mm Socket, Flathead Screw Driver, Phillips Screw Driver, Pliers.

Note: Legal in California for use on race vehicles only. The use of this device on vehicles used on public streets or highways is strictly prohibited in California and others states that have adopted California emission regulations.

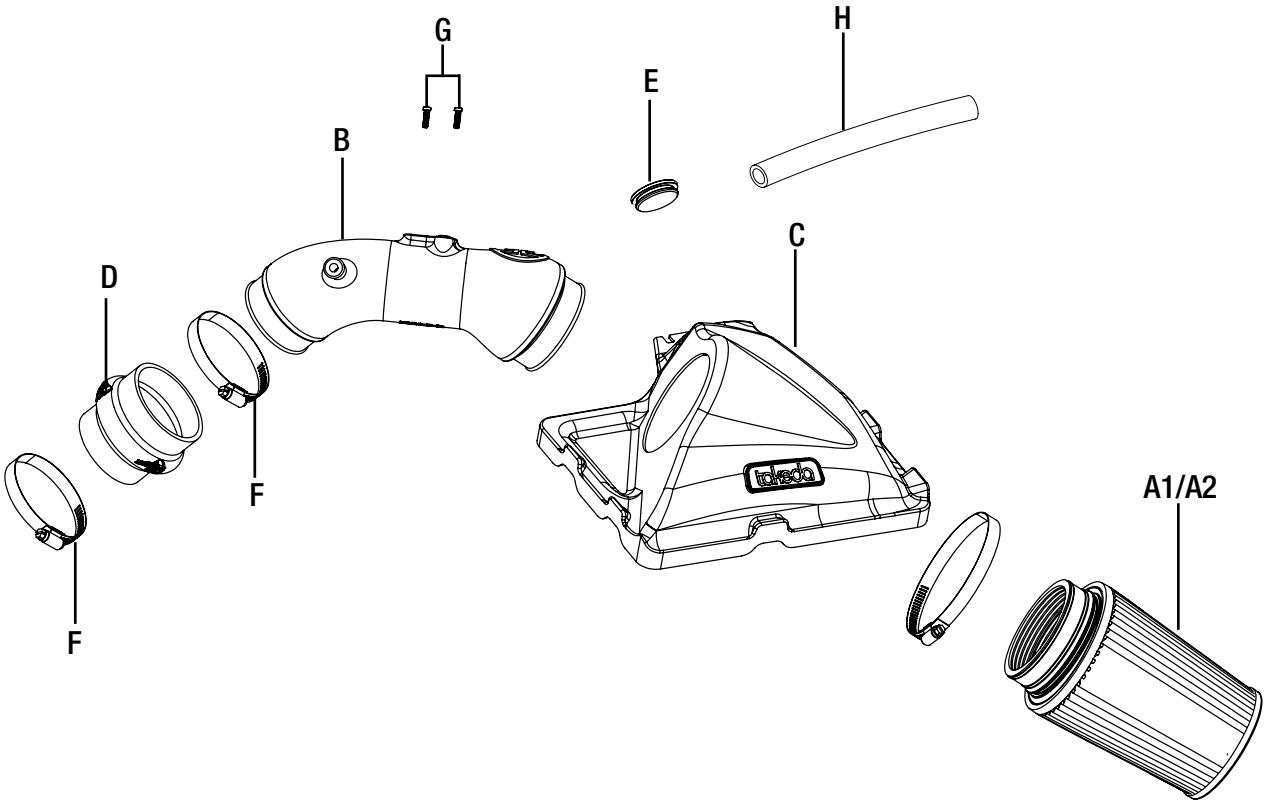




Figure A

Refer to Figure A for Step 1.

Step 1: Remove the three 10mm bolts on the engine cover and then pull out the engine cover.

**Figure B****Refer to Figure B for Steps 2-4.**

Step 2: Disconnect the MAF sensor and remove from the plastic retainers.

Step 3: Disconnect the crank case hose from the valve cover.

Step 4: Loosen the clamp on the intake tube connecting to the throttle body.



Figure C

Refer to Figure C for Step 5.

Step 5: Remove the top of the OE airbox with the intake tube.



Figure D

Refer to Figure D for Step 6.

Step 6: Pre-install the Takeda air filter through the Takeda cover, assure filter retain groove is locked to housing.

**Figure E****Refer to Figure E for Steps 7-8.**

Step 7: Install the coupling onto the throttle body with the supplied clamps, tighten only the clamp on the throttle body side. Do not tighten other clamp at this time.

Step 8: install the housing and filter onto the bottom part of the OE airbox, secure it with the OE retaining clips.



Refer to Figure F for Step 9.

Step 9: Transfer the MAF sensor from the OE intake tube into the Takeda intake tube, secure it with the provided hardware.

**Figure G****Refer to Figure G for Steps 10-15.**

Step 10: Slide the intake tube into the coupling then into the filter.

Step 11: Align the tube with filter and coupling then tighten both clamps.

Step 12: Re-connect MAF harness to sensor

Step 13: Connect the provided crank case hose to the intake tube fitting then onto the valve cover fitting.

Step 14: Reinstall the engine cover from Step 1.

Step 15: Make sure all bolt and clamps are tight, installation is now complete. Thank you for choosing Takeda USA!

NOTE: Retighten all connections after approximately 100-200 miles.

[Learn more about other performance air intake systems by Takeda on our website.](#)