

advanced FLOW engineering

Instruction Manual P/N: TM-1024B-D / TM-1024B-R



Make: **Honda** Model: **Civic** Year: **2016-2019** Engine: **I4-1.5L Turbo**



- Please read the entire instruction manual before proceeding.
- Ensure all components listed are present.
- Ensure you have all necessary tools before proceeding.
- Do not attempt to work on your vehicle when the engine is hot.
- Disconnect the negative battery terminal before proceeding.
- Retain factory parts for future use.

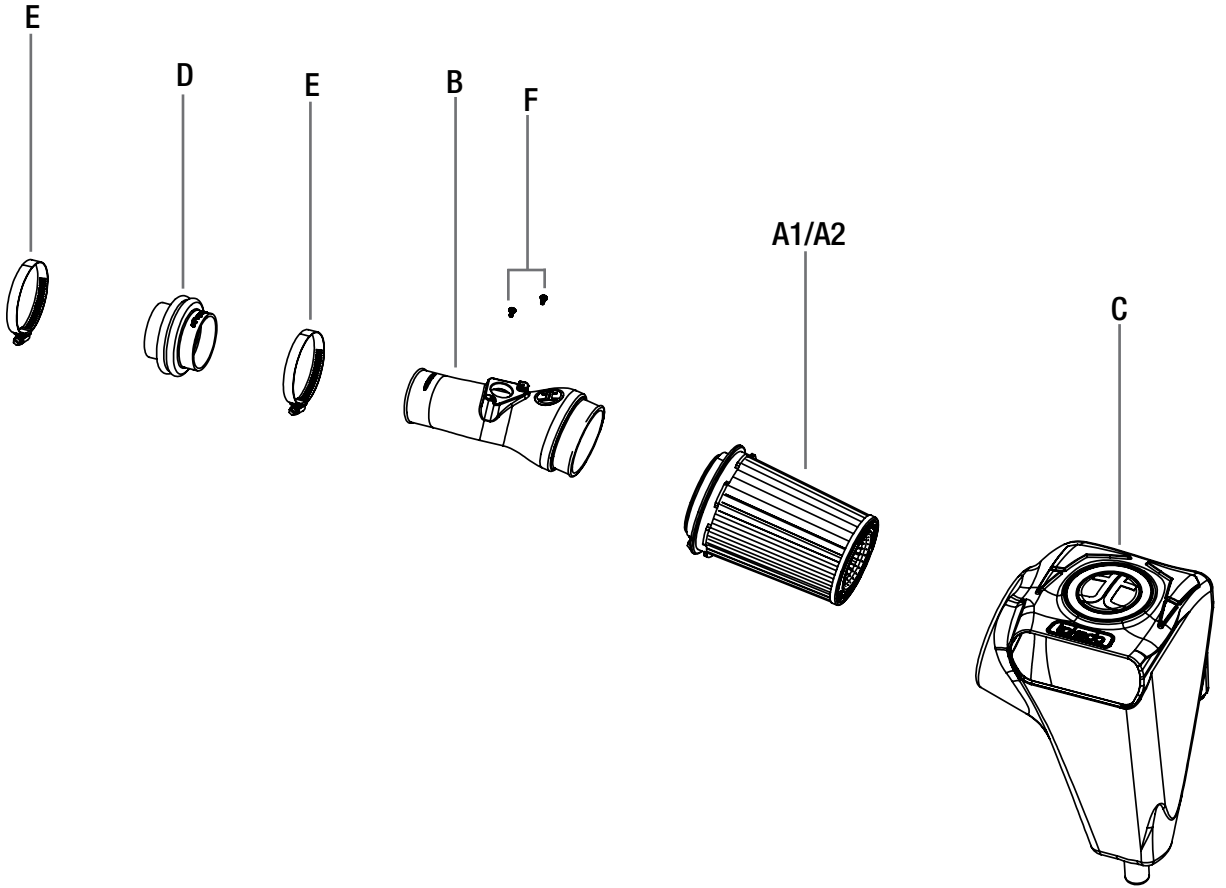
Retain factory parts for future use.

Label	Qty.	Description	Part Number
A1	1	Air Filter (Pro DRY S)	21-91103 (Grey Media)
A2	1	Air Filter (Pro 5R)	24-91103 (Blue Media)
B	1	Tube	05-T1024B1
C	1	Housing	05-T1024B2
D	1	Coupling, Silicone	05-01410
E	2	Clamp, #044	03-50019
F	2	Screw, Torx: M4	03-50491

Installation will require the following tools:

Flat head screw driver, ratchet, 10mm socket, extension, 8mm nut driver

Emissions Disclaimer: This product is not currently CARB exempt and is not available for purchase in California or for use on any vehicle registered with the California Department of Motor Vehicles.



**Figure A****Refer to Figure A for Steps 1-4**

Step 1: Disconnect the MAF sensor harness, with a small flat head screwdriver unclip the harness holder and release it from the air box.

Step 2: Loosen the clamp on the factory intake tube connecting to the turbo inlet tube.

Step 3: Remove the two 10mm bolts retaining the factory housing.

Step 4: With an upward motion remove the factory intake system out of the vehicle.



Figure B

Refer to Figure B for Step 5

Step 5: Transfer one of the factory grommets onto the Takeda Housing with the metal insert



Refer to Figure C for Steps 6-7

Step 6: Install the Takeda housing into the vehicle assure the factory grommet has not moved from the factory resonator.

Step 7: Secure the housing with one of the factory bolts removed previously.



Figure D

Refer to Figure D for Steps 8-10

Step 8: With a small flat head screwdriver, un-clip the four (x4) tabs and open the wire cover.

Step 9: Re-route the wire harness to add more length.

Step 10: Close the wire cover.



Figure E

Refer to Figure E for Step 11

Step 11: Slide the Takeda air filter into the Takeda housing, assure the filter tabs are locked on the housing.

**Figure F****Refer to Figure F for Steps 12-13**

Step 12: Transfer the MAF sensor from the factory housing to the Takeda intake tube with the supplied screws.

Step 13: Install the reducer coupling onto the Takeda intake tube with clamps, assure the larger opening on the coupling stops on the retain hump. Tighten clamp on tube.

**Figure G****Refer to Figure G for Steps 14-16**

Step 14: Slide the tube into the air filter first then onto the turbo inlet, align tube then tighten clamps.

Step 15: Re-connect MAF sensor harness.

Step 16: Make sure all clamps and connections are secured. Your installation is now completed. Thank you for choosing Takeda USA!

NOTE: Check all bolts, clamps and connectors after 100-200 miles.

Pro DRY S Air Filter



P/N: 21-91103

Pro 5R Air Filter



P/N: 24-91103

Pro DRY S Restore Kit



P/N: TP-7015C

Blue Squeeze Restore Kit



P/N: 90-50501

SCORCHER GT Module



P/N: 77-46601

Turbo Downpipe



P/N: 48-36604-HC (Street)
48-36604-HN (Race)

Rear/Mid Downpipe



P/N: 48-36605

Exhaust Cat-Back



P/N: 49-36615-B (Blk. Tips)
49-36615-P (Pol. Tips)
49-36615-L (Blue Flame)

Intercooler Kit



P/N: 46-20342-R

Intercooler Tubes



P/N: 46-20344-R

Sprint Booster V3



P/N: 77-16604