

advanced FLOW engineering Stage-2 Air Intake

Instruction Manual P/N: TA-4305B-1R / TR-4305B-1D



Make: **Subaru** Model: **WRX** Year: **2015-2019** Engine: **H4-2.0L Turbo**



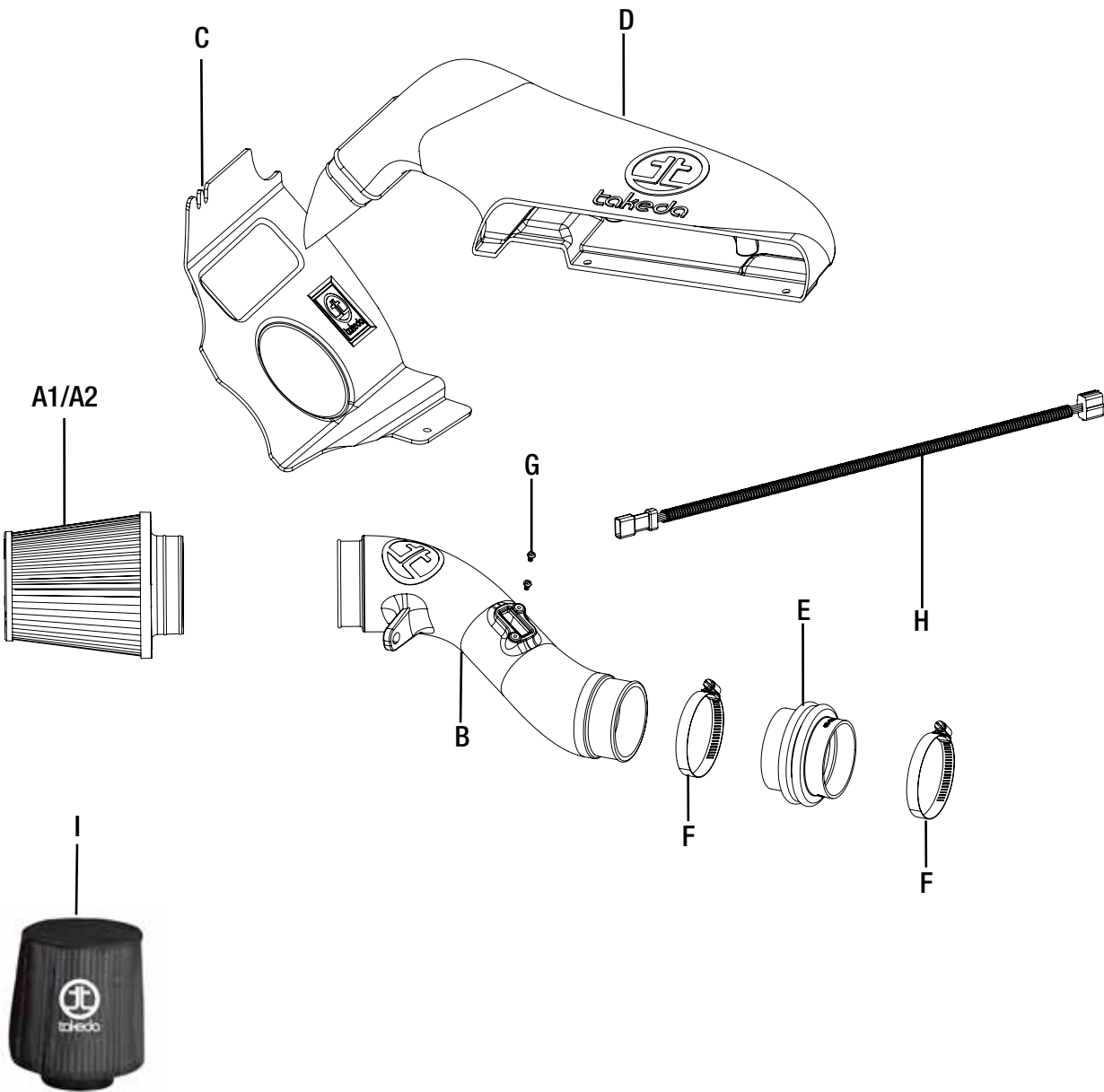
- Please read the entire instruction manual before proceeding.
- Ensure all components listed are present.
- Ensure you have all necessary tools before proceeding.
- Do not attempt to work on your vehicle when the engine is hot.
- Disconnect the negative battery terminal before proceeding.
- Retain factory parts for future use.

Label	Qty.	Description	Part Number
A1	1	Air Filter (Pro DRY S)	TF-9009D
A2	1	Air Filter (Pro 5R)	TF-9009R
B	1	Tube	05-T4305B3
C	1	Housing	05-T4305B2
D	1	Scoop	05-T4306B3
E	1	Coupling, Silicone Reducer	05-01400
F	2	Clamp, 048 (2-9/16" - 3-1/2")	03-50007
G	2	Screw, Chs Hd Slotted: M4 x .7 x 8	03-50034
H	1	Harness, MAF Extension	05-01359
I	1	Pre-Filter	TP-7011B

Installation will require the following tools:

8mm Nut driver, 10mm Nut Driver, 1/4" Ratchet, 10mm Socket, Flathead Screw Driver, Phillips Screw Driver, Pliers.

Note: Legal in California for use on race vehicles only. The use of this device on vehicles used on public streets or highways is strictly prohibited in California and others states that have adopted California emission regulations.



**Figure A****Refer to Figure A for Steps 1-3**

Step 1: Unplug MAF sensor harness from MAF sensor (1).

Step 2: Remove the two push pins retaining the OE air scoop. Do not discard push pins, will be reused later (2).

Step 3: Remove OE air scoop from vehicle.



Figure B

Refer to Figure B for Steps 4-7

- Step 4: Remove the two 10mm (3) nuts from the bracket on the OE air box. Do not discard nuts, will be reused.
- Step 5: Remove the 10mm (4) bolt on the bottom of the OE air box. Do not discard bolt, will be reused.
- Step 6: Loosen the clamp connecting to the OE air box next to the MAF sensor.
- Step 7: Remove OE air box out of vehicle.

**Figure C****Refer to Figure C for Steps 8-9**

Step 8: Remove the 10mm (5) nut off the OE intake tube bracket. Do not discard nut, will be reused

Step 9: Loosen the clamp on the Intake tube connecting to the turbo inlet tube and remove tube.

**Figure D****Refer to Figure D for Steps 10-12**

Step 10: Transfer MAF sensor from OE airbox to Takeda intake tube secure it using provided hardware.

Step 11: Connect the provided MAF harness extender to the MAF sensor.

Step 12: Pre-install the provided coupling with the bigger opening to the tube and tighten clamp. Do NOT tighten on open end.



Figure E

Refer to Figure E for Step 13-16

Step 13: Slide the intake tube assembly onto the turbo inlet, and the OE isolation mount.

Step 14: Install the air filter onto the intake tube.

Step 15: Align the intake tube and secure it with the 10mm nut previously and tighten all clamps.

Step 16: Reconnect MAF sensor harness.

INSTALL



Figure F

Refer to Figure F for Step 17

Step 17: Install the Takeda housing and secure it using the OE nuts and bolt

**Figure G****Refer to Figure G for Steps 18-20**

Step 18: Insert the Takeda air scoop through the housing opening, assure it snaps in to the grooves.

Step 19: Re-install the OE push pins to secure the Takeda air Scoop.

Step 20: Make sure all bolt and clamps are tight, installation is now complete. Thank you for choosing Takeda USA!

NOTE: Retighten all connections after approximately 100-200 miles.

[Learn more about other performance air intake systems by Takeda on our website.](#)