

advanced FLOW engineering

Cold Air Intake System

Instruction Manual P/N: 56-70029D / 56-70029R

Make: Hyundai

Model: Veloster

Year: 2012-2017

Engine: L4-1.6L



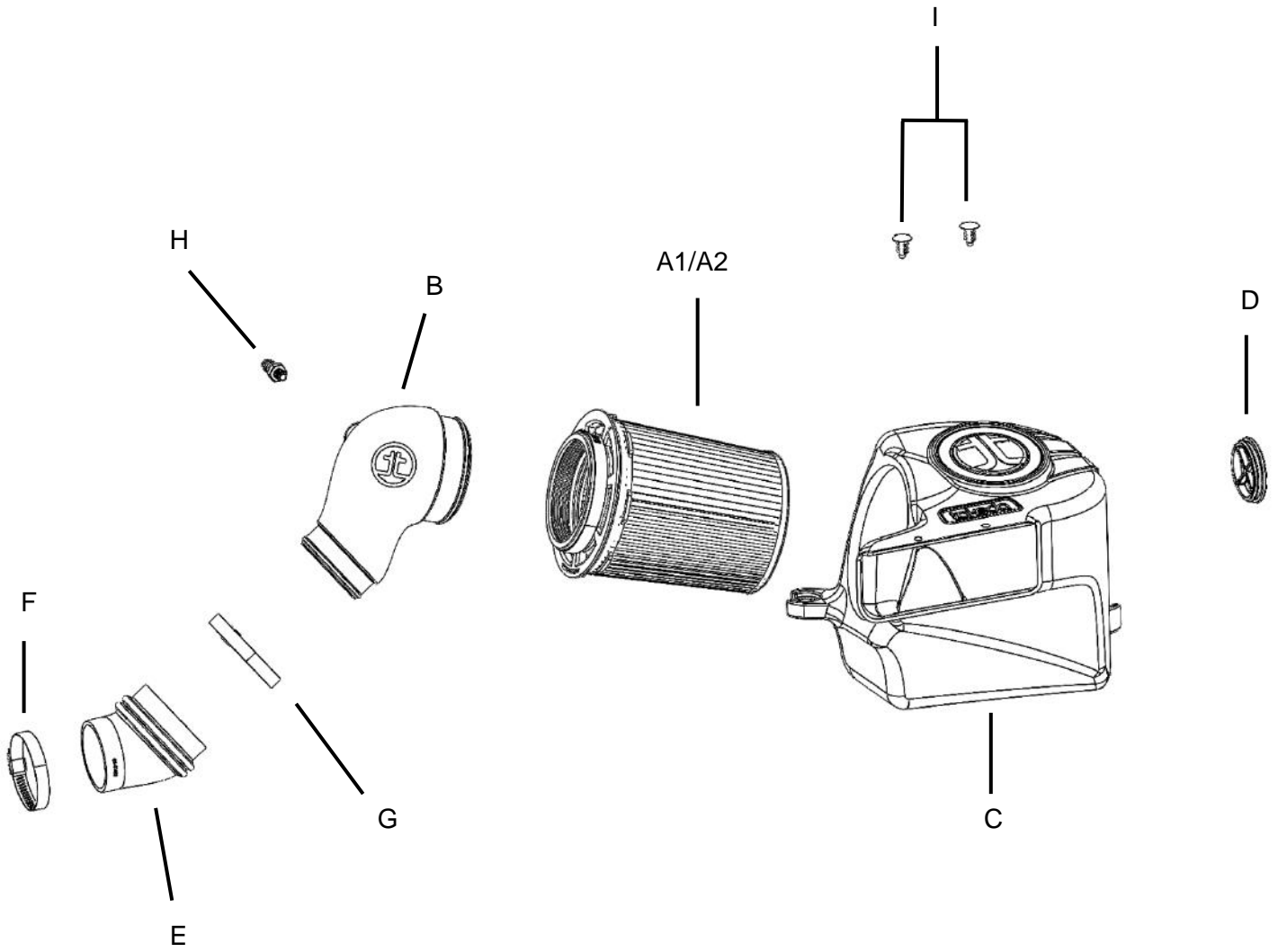
- Please read the entire instruction manual before proceeding.
- Ensure all components listed are present.
- Ensure you have all necessary tools before proceeding.
- Do not attempt to work on your vehicle when the engine is hot.
- Retain factory parts for future use.

Label	Qty.	Description	Part Number
A1	1	Air Filter (Pro 5R)	24-91108
A2	1	Air Filter (Pro DRY S)	21-91108
B	1	Tube	05-5670029B1
C	1	Housing	05-5670028B2
D	1	Plug, Air Box	05-01527
E	1	Coupling, Silicone Elbow Reducer	05-01421
F	1	Clamp, #044	03-50019
G	1	Clamp, #048	03-50007
H	1	11mm Barbed Fitting	03-50615
I	2	Retainer Clips	03-50616

Installation will require the following tools:

8mm and 10mm socket, extension, ratchet, 16mm wrench, pliers and flat-head screwdriver

Emissions Disclaimer: This product is not currently CARB exempt and is not available for purchase in California or for use on any vehicle registered with the California Department of Motor Vehicles.



**Figure A****Refer to Figure A for Steps 1-2**

Step 1: Using pliers, open the clamp securing the hose to the air intake tube, and then slide the clamp away from the intake tube. This clamp will be re-used. Disconnect the rubber hose from the air intake tube.

Step 2: Loosen the clamp securing the factory intake tube to the factory air box with a 10mm socket or screwdriver.



Figure B

Refer to Figure B for Steps 3-4

Step 3: Loosen the clamp at the throttle body using a 10mm socket and ratchet, or a screwdriver.

Step 4: Remove the factory intake tube from the vehicle.

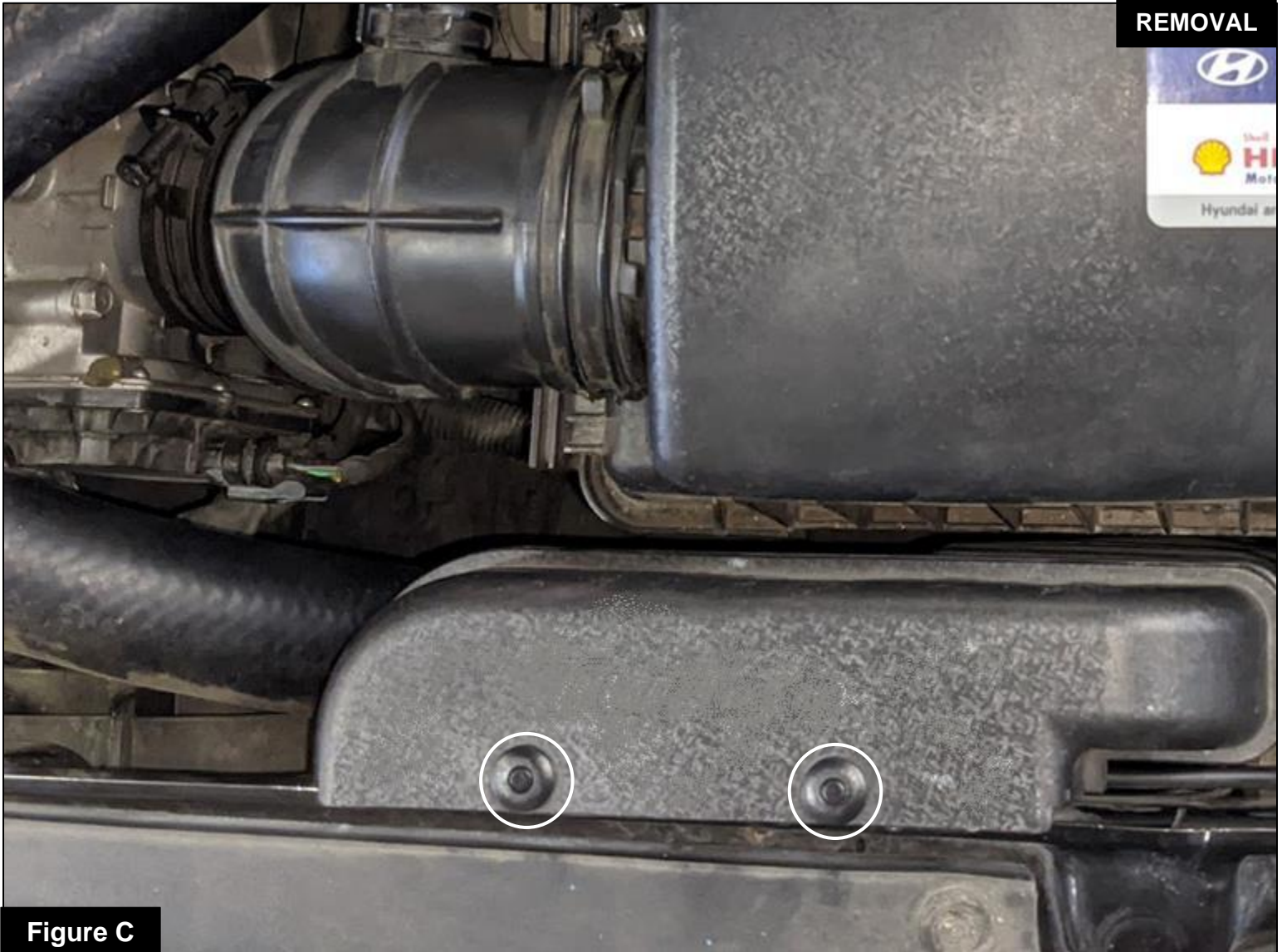


Figure C

Refer to Figure C for Step 5

Step 5: Remove the two plastic rivets connecting the factory air inlet to the front of the car. Use a screwdriver to gently press down on the center of the rivet to unlock, and then pull them out. These plastic rivets will be replaced. Gently pull up on the scoop to remove it.

**Figure D****Refer to Figure D for Steps 6-7**

Step 6: With a 10mm socket, extension and ratchet, loosen the three screws securing the factory housing to the vehicle. These screws will be re-used during the installation of the Takeda air intake system.

Step 7: Remove the factory housing and air inlet as one piece out of the vehicle by pulling up.



Figure E

Refer to Figure E for Step 8

Step 8: Transfer two of the three mounting grommets and metal sleeves from the bottom of the factory housing to the Takeda housing.



Figure F

Refer to Figure F for Steps 9-10

Step 9: Install the Takeda housing into the vehicle. Secure it with two of the three screws removed at Step 6.

Step 10: Secure the housing to the factory air inlet with the two provided push-in plastic rivets.

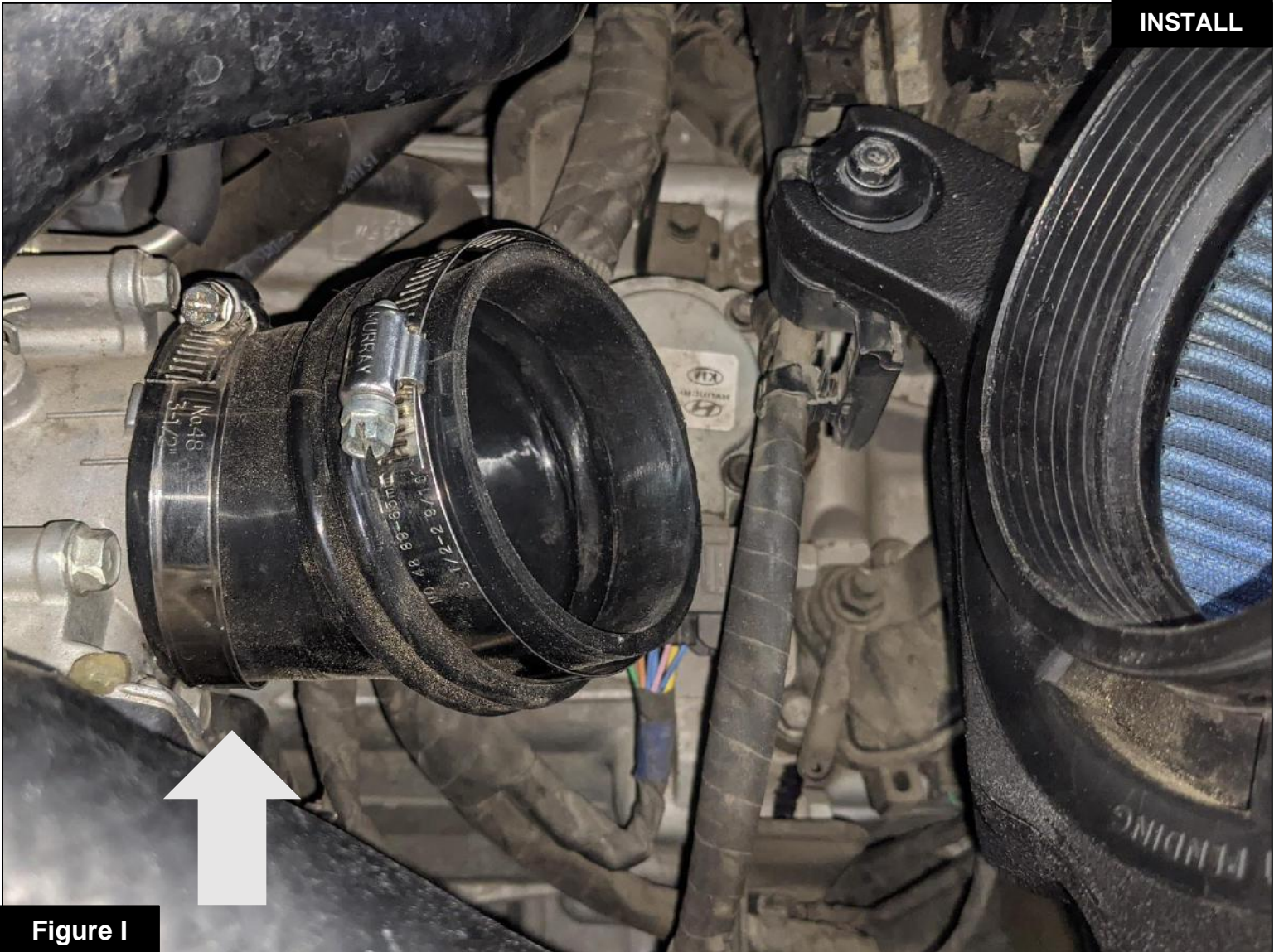
**Figure G****Refer to Figure G for Step 11**

Step 11: Install the air filter into the housing by firmly pushing it into the housing until the filter tabs lock it into place. Place clamp over the filter flange, but do not tighten at this time.

**Figure H****Refer to Figure H for Step 12**

Step 12: Using a 16mm wrench, install the aluminum fitting into the Takeda air intake tube.

Note: These are NPT fittings, the small gap between the 16mm hex and the tube is normal.

**Figure I****Refer to Figure I for Steps 13-15**

Step 13: Install the coupling by sliding the small end onto the throttle body, as shown.

Step 14: Tighten the smaller No. 44 clamp over the coupling and throttle body, so that the clamp is snug.

This is to prevent the coupling from moving off the throttle body in the following steps.

Step 15: Slip the larger No. 48 clamp over the larger end of the elbow coupling. Do not tighten it at this time.

**Figure J****Refer to Figure J for Steps 16-18**

Step 16: Install the Takeda intake tube by inserting the smaller end into the coupling.

Step 17: Line up the Takeda intake tube with the filter flange, but do not insert into the filter yet.

Step 18: Tighten the No. 48 clamp over the coupling and the Takeda intake tube, again, only until it is snug .

**Figure K****Refer to Figure K for Steps 19-20**

Step 19: Insert the larger end of the Takeda intake tube into the air filter.

Step 20: Align the Takeda intake tube, air filter and coupling then tighten all clamps.



Figure L

Refer to Figure L for Step 21

Step 21: Connect the small rubber hose to the aluminum fitting on the tube. Secure it with the factory pry clamps.



Figure M

Refer to Figure M for Step 22

Step 22: The kit includes an optional plug to close off the side auxiliary air inlet. Install the plug if you wish to close off the side auxiliary air inlet and only capture cold air from the front.

- Without the plug installed, the Takeda intake will capture the maximum air available. More airflow offers more power. Yet some of this air is picked up from inside the engine compartment and could be warmer air. Warmer air will affect the performance of the vehicle.
- The plug installed on the housing will block off any hot engine air entering the housing and make sure the coolest air available is directed into the engine. It will also reduce the noise of the intake.

**Figure N**

Refer to Figure N for Steps 23

Step 23: Make sure all clamps and connections are secured. Your installation is now complete. Thank you for choosing Takeda USA!

NOTE: Check all screws, clamps, and connectors are secure after 100-200 miles.