

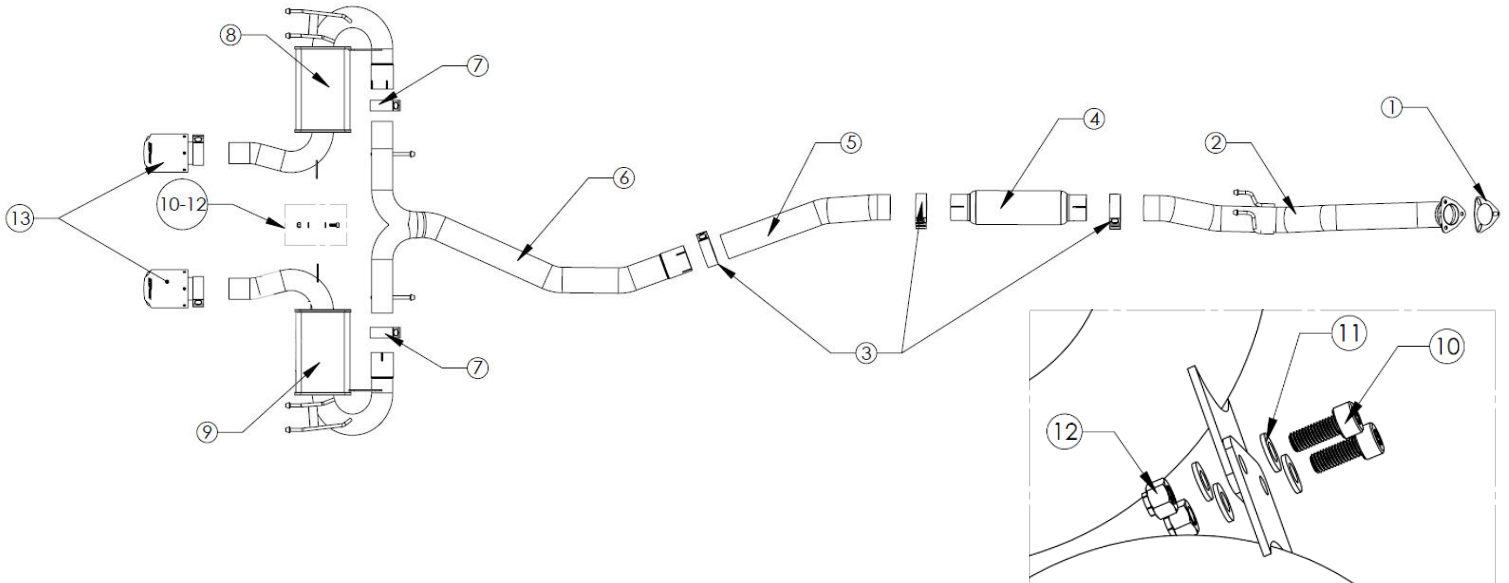


# INSTALLATION INSTRUCTIONS

## Cat-Back Exhaust

**MAKE:** Honda  
**MODEL:** Civic Sport Hatchback  
**YEAR:** 2017-2020  
**ENGINE:** I4-1.5L (t)

49-36624-P  
 49-36624-B  
 49-36624-L  
 49-36624-C



Item	Description	Part Number	Quantity
1	Gasket	05-46192	1
2	Mid-pipe 1 Assembly	05-145847	1
3	3" Clamp Band	05-41055	3
4	Resonator	05-145913	1
5	Mid-pipe 2	05-145849	1
6	Y-pipe Assembly	05-145849	1
7	2-1/2" Clamp Band	05-41061	2
8	Muffler Assembly, Driver Side	05-145851	1
9	Muffler Assembly, Passenger Side	05-145850	1
10	M8 x 1.25 x 20 Socket Head Cap Screw	03-50341	2
11	Washer, Flat M8, 16mm OD	03-50159	4
12	M8 x 1.25 Hex Nut	05-46057	2
13	Clamp-on Polished Tip	49T25454-P07	2
	Clamp-on Black Tip	49T25454-B07	
	Clamp-on Blue Flame Tip	49T25454-L07	
	Clamp-on Carbon Fiber Tip	49T25454-C07	

**aFe POWER recommends professional installation on this product.** Thoroughly inspect the aFe POWER exhaust system to make sure there is no damage from shipping (if damage is noted, immediately contact aFe POWER customer service). Allow time for your vehicle to cool down prior to installation. When working on your vehicle proceed with caution. Wear protective safety equipment; eye goggles and gloves to ensure a safe installation.

Install band clamps to proper torque specifications of 40-45 ft-lb.

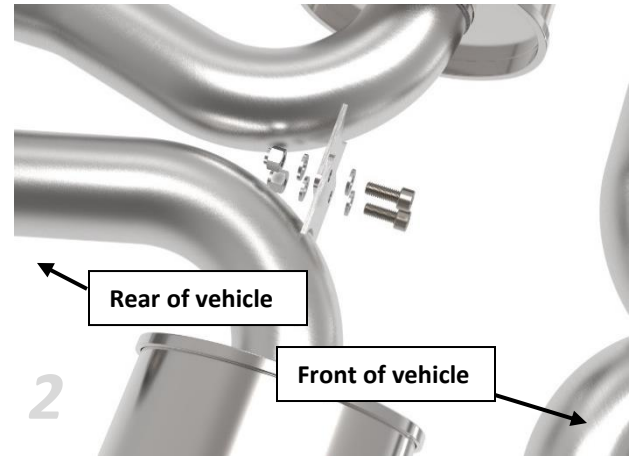
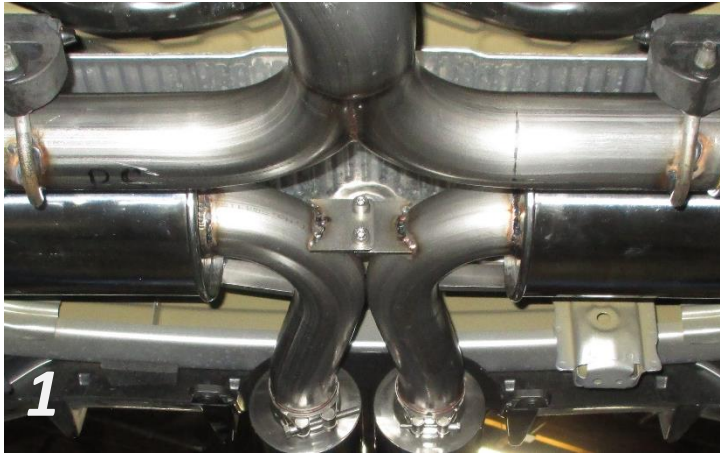


## INSTALLATION INSTRUCTIONS

**MAKE:** Honda  
**MODEL:** Civic Sport Hatchback  
**YEAR:** 2017-2020  
**ENGINE:** I4-1.5L (t)

**Cat-Back Exhaust**

49-36624-P  
49-36624-B  
49-36624-L  
49-36624-C



1. **(Read instructions prior to installation.)** It is recommended to not fully tighten the exhaust until it has been fully installed. Leave loose for adjustability.
2. Secure vehicle on jack stands (refer to your manual for specified jack stand positions).
3. For faster installation, spread out the parts of the exhaust alongside your vehicle as shown in the diagram above.
4. Secure the stock exhaust with jack/stands.
5. Disconnect the negative battery terminal.
6. Remove the (x4) bolts securing the brace to the vehicle and remove brace.
7. Remove the (x3) nuts securing the stock exhaust to the front pipe.
8. Remove the rubber isolation hanger mounts off the chassis and remove the stock exhaust.
9. Remove the rubber isolation mounts off the stock exhaust section and transfer to the TAKEDA exhaust system.
10. Install the Mid-pipe 1 Assembly using the OE nuts and (x1) supplied gasket. Install hangers to chassis with rubber isolation mounts.
11. Using the (x1) supplied 3" band clamp, install the Resonator onto the Mid-pipe 1 Assembly but do not tighten.
12. Using the (x1) supplied 3" band clamp, install the Mid-pipe 2 onto the Resonator but do not tighten.
13. Using the (x1) supplied 3" band clamp, install the Y-pipe Assembly onto Mid-pipe 2 and install hangers to chassis with rubber isolation mounts.
14. Using the (x1) supplied 2.5" band clamp, install the Passenger Side Muffler Assembly onto the Y-pipe Assembly and install hangers to chassis using rubber isolation mounts.
15. Using the (x1) supplied 2.5" band clamp, install the Driver Side Muffler Assembly onto the Y-pipe Assembly and install hangers to chassis with rubber isolation mounts.
16. Align the brackets on the Muffler Assemblies so that the Passenger Side Muffler Assembly bracket is positioned in front of the Driver Side Muffler Assembly bracket. Attach using the supplied (x2) nuts, (x4) washers, and (x2) bolts, but do not tighten at this time. **(See reference image 1 & 2)**
17. Install the driver and passenger side Clamp-on Tips onto both Muffler Assemblies using supplied band clamps.
18. Reinstall brace with (x4) OE bolts.
19. Ensure that all the components of the TAKEDA exhaust system are aligned and are at a safe clearance from all wires, hoses, brake lines, body parts, and tires.
20. Start from the front of the TAKEDA exhaust system and evenly tighten all clamps and fasteners.
21. Reconnect the battery.
22. Start the vehicle and check for any leaks. If any leaks are found, determine cause and repair as necessary.
23. Remove vehicle from jacks stands.
24. It is recommended to re-tighten all clamps and hardware after 50-100 miles.